

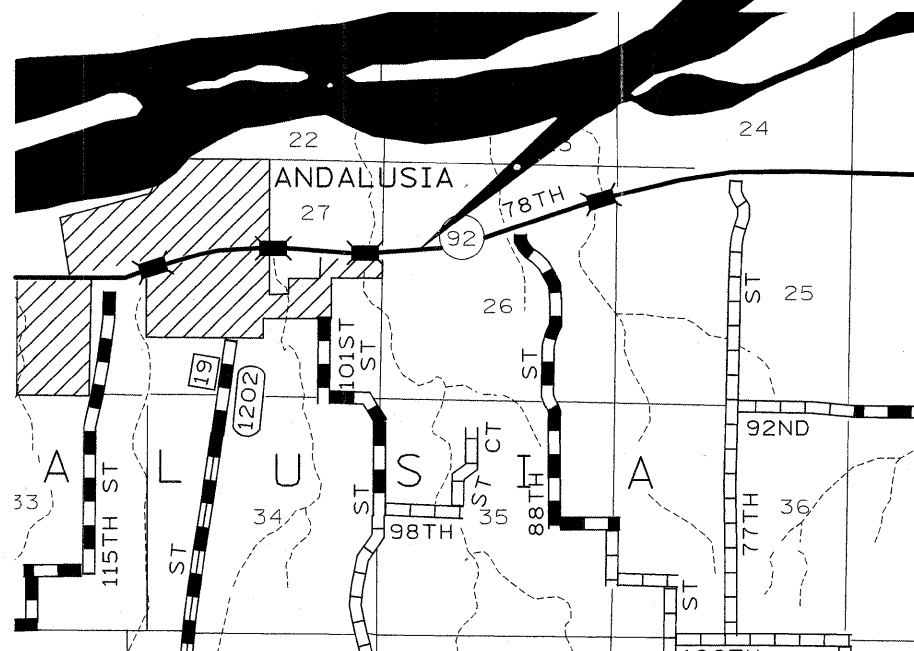
| | | | | |
|---------------------|------------|--------------------|--------------|-----------|
| F.A.P. RTE. | SECTION | COUNTY | TOTAL SHEETS | SHEET NO. |
| 599 | (42MFT)T-1 | ROCK ISLAND | 26 | 1 |
| FED. ROAD DIST. NO. | ILLINOIS | CONTRACT NO. 64C76 | | |

STATE OF ILLINOIS
DEPARTMENT OF TRANSPORTATION
DIVISION OF HIGHWAYS
**PROPOSED
HIGHWAY PLANS**

FAP ROUTE 599 (IL92)
SECTION (42MFT)T-1
PROJECT F-0599(023)
ROCK ISLAND COUNTY

C-92-020-09

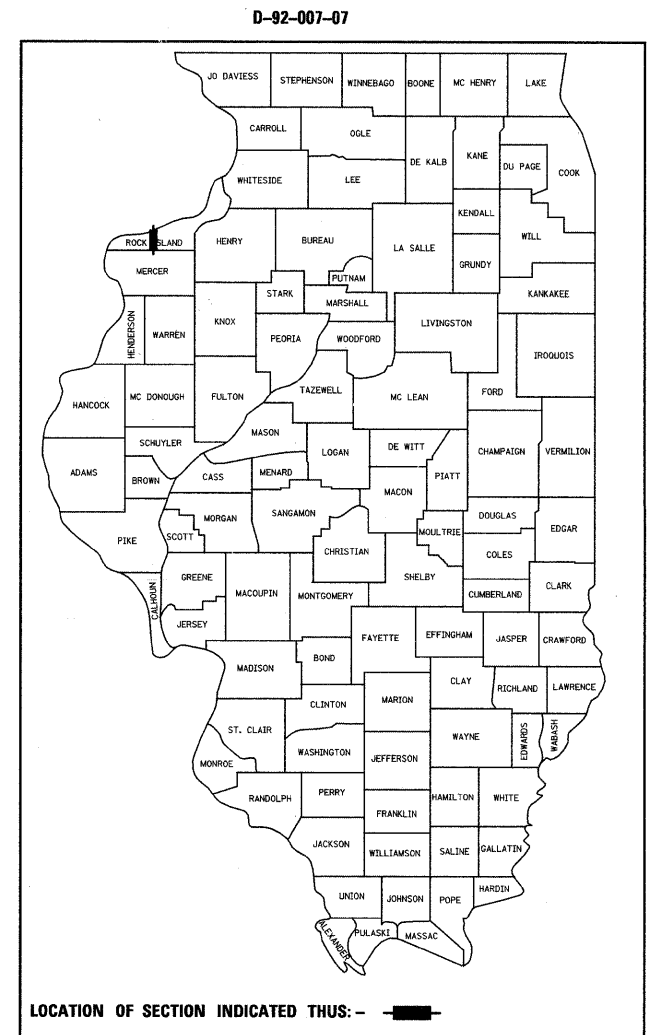
R.3W.



**IMPROVEMENT BEGINS
STA. 1094 + 63**

INCLUDES THE REMOVAL AND REPLACEMENT
OF THE EXISTING BOX CULVERT
EXISTING SN-081-1049
PROPOSED SN-081-1112

**IMPROVEMENT ENDS
STA. 1097 + 00**

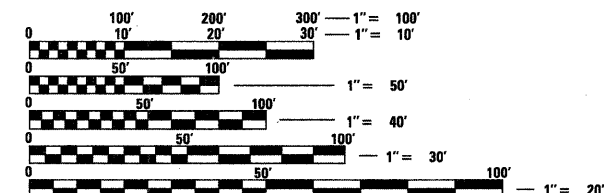


INDEX

- 1 COVER SHEET, INDEX AND STANDARDS
- 2 SUMMARY OF QUANTITIES
- 3- 4 GENERAL NOTES
- 5- 6 SCHEDULE OF QUANTITIES
- 7 TYPICAL SECTIONS
- 8 STAGING TYPICALS
- 9- 11 HORIZONTAL AND VERTICAL CONTROL
- 12 PLAN AND PROFILE
- 13 STAGING PLAN SHEETS
- 14- 15 DROP BOX DETAILS
- 16 BORING LOGS
- 17 DELINEATOR AND POST ORIENTATION (37.4)
TYPICAL BENCHING DETAIL ON EXISTING EMBANKMENT (50.4)
TREE REPLACEMENT SCHEDULE (90.4)
- 18 EROSION CONTROL DETAILS FOR SILT FENCE (29.2)
INFORMATIONAL WARNING SIGN (FOR NARROW TRAVEL LANES) (39.2)
WITNESS MARKER & PERMANENT SURVEY MARKERS, TYPE II (66.2)
- 19 HOT -MIX ASPHALT APPROACHES AND MAILBOX RETURNS WITH NO HOT-MIX ASPHALT SHOULDERS (20.1)
- 20 TYPICAL PAVEMENT MARKINGS (41.1)
- 21- 22 DETAILS OF PLANTING AND BRACING TREES (92.1)
- 23- 24 CROSS SECTIONS

STATE STANDARDS

- 280001-04 TEMPORARY EROSION CONTROL SYSTEMS
- 420001-07 PAVEMENT JOINTS
- 442201-03 CLASS C AND D PATCHES
- 542206-01 REINFORCED CONCRETE END SECTIONS FOR PIPE CULVERTS, 1050 MM (42") THRU 1500 MM (60") DIAMETER SKEWED WITH ROADWAY
- 542301-02 PRECAST REINFORCED CONCRETE PLATED END SECTION
- 542401-01 METAL END SECTION FOR PIPE CULVERTS
- 635001-01 DELINEATORS
- 666001-01 RIGHT-OF-WAY MARKERS
- 667101-01 PERMANENT SURVEY MARKERS
- 701001-02 OFF-ROAD OPERATIONS, 2L, 2W, MORE THAN 4.5M (15') AWAY
- 701006-03 OFF-ROAD OPERATIONS, 2L, 2W, 4.5M (15') TO 600 MM (24") FROM PAVEMENT EDGE
- 701011-02 OFF-ROAD MOVING OPERATIONS, 2L, 2W, DAY ONLY
- 701201-03 LANE CLOSURE, 2L, 2W, DAY ONLY, FOR SPEEDS >45 MPH
- 701301-03 LANE CLOSURE, 2L, 2W, SHORT TIME OPERATIONS
- 701311-03 LANE CLOSURE, 2L, 2W, MOVING OPERATIONS - DAY ONLY
- 701901-01 TRAFFIC CONTROL DEVICES
- 720011-01 METAL POSTS FOR SIGNS, MARKERS AND DELINEATORS
- 728001-01 TELESCOPING STEEL SIGN SUPPORT
- 729001-01 APPLICATIONS OF TYPES A AND B METAL POSTS (FOR SIGNS & MARKERS)
- 780001-02 TYPICAL PAVEMENT MARKINGS
- 000001-05 STANDARD SYMBOLS, ABBREVIATIONS AND PATTERNS
- 001001-02 AREAS OF REINFORCEMENT BARS
- 001006 DECIMAL OF AN INCH AND OF A FOOT



FULL SIZE PLANS HAVE BEEN PREPARED USING STANDARD ENGINEERING SCALES. REDUCED SIZED PLANS WILL NOT CONFORM TO STANDARD SCALES. IN MAKING MEASUREMENTS ON REDUCED PLANS, THE ABOVE SCALES MAY BE USED.

J.U.L.I.E.
JOINT UTILITY LOCATION INFORMATION FOR EXCAVATION
1-800-892-0123
OR 811

ANDELUSIA TOWNSHIP, SECTION 26

GROSS LENGTH OF PROJECT = 53 LIN. FT. = 0.010 MILES
NET LENGTH OF PROJECT = 53 LIN. FT. = 0.010 MILES

STATE OF ILLINOIS
DEPARTMENT OF TRANSPORTATION
DIVISION OF HIGHWAYS

SUBMITTED Oct. 9, 2008

George F. Ryman
DEPUTY DIRECTOR OF HIGHWAYS, REGION ENGINEER

December 5, 2008
Eric E. Harrel
INTERIM ENGINEER OF DESIGN AND ENVIRONMENT

December 5, 2008
Christine M. Reed
DIRECTOR OF HIGHWAYS, CHIEF ENGINEER

**PRINTED BY THE AUTHORITY
OF THE STATE OF ILLINOIS**

PROJECT ENGINEER: REBECCA MARRUFFO

SQUAD LEADER: THOMAS HALLA (815)-284-5993