

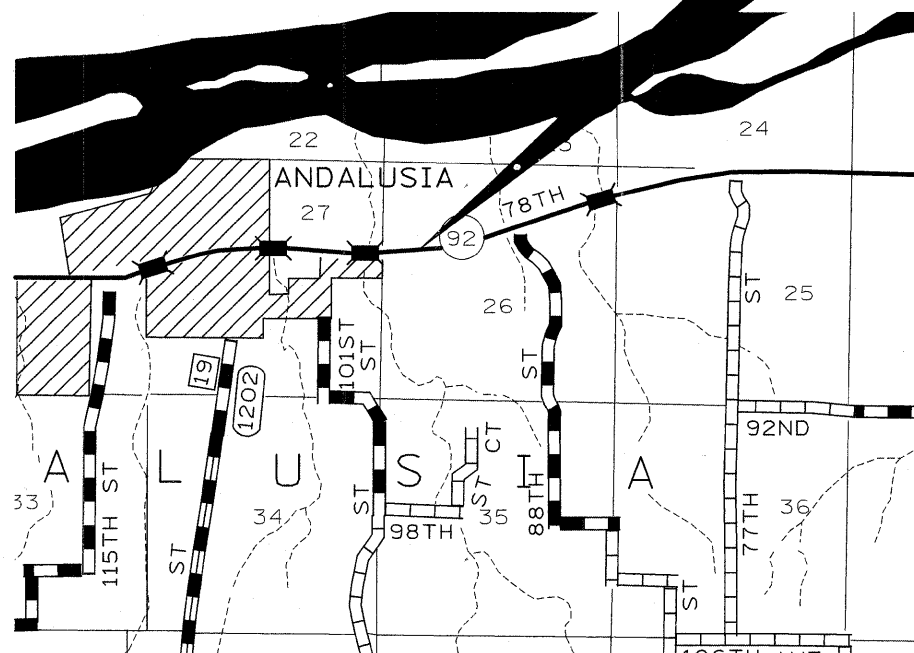
F.A.P. RTE.	SECTION	COUNTY	TOTAL SHEETS	SHEET NO.
599	(42MFT)T-1	ROCK ISLAND	26	1
FED. ROAD DIST. NO.	ILLINOIS	CONTRACT NO. 64C76		

STATE OF ILLINOIS  
DEPARTMENT OF TRANSPORTATION  
DIVISION OF HIGHWAYS  
**PROPOSED  
HIGHWAY PLANS**

**FAP ROUTE 599 (IL92)  
SECTION (42MFT)T-1  
PROJECT F-0599(023)  
ROCK ISLAND COUNTY**

C-92-020-09

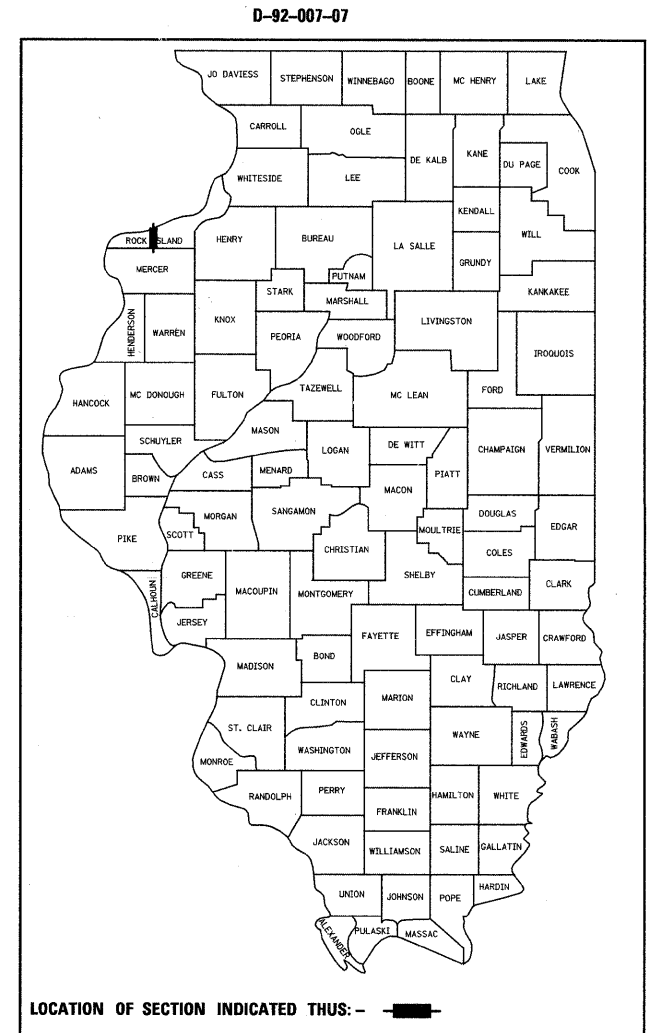
R.3W.



**IMPROVEMENT BEGINS  
STA. 1094 + 63**

INCLUDES THE REMOVAL AND REPLACEMENT  
OF THE EXISTING BOX CULVERT  
EXISTING SN-081-1049  
PROPOSED SN-081-1112

**IMPROVEMENT ENDS  
STA. 1097 + 00**

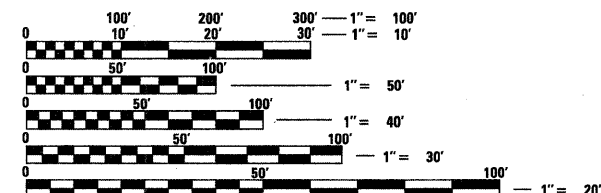


**INDEX**

- 1 COVER SHEET, INDEX AND STANDARDS
- 2 SUMMARY OF QUANTITIES
- 3- 4 GENERAL NOTES
- 5- 6 SCHEDULE OF QUANTITIES
- 7 TYPICAL SECTIONS
- 8 STAGING TYPICALS
- 9- 11 HORIZONTAL AND VERTICAL CONTROL
- 12 PLAN AND PROFILE
- 13 STAGING PLAN SHEETS
- 14- 15 DROP BOX DETAILS
- 16 BORING LOGS
- 17 DELINEATOR AND POST ORIENTATION (37.4)  
TYPICAL BENCHING DETAIL ON EXISTING EMBANKMENT (50.4)  
TREE REPLACEMENT SCHEDULE (90.4)
- 18 EROSION CONTROL DETAILS FOR SILT FENCE (29.2)  
INFORMATIONAL WARNING SIGN (FOR NARROW TRAVEL LANES) (39.2)  
WITNESS MARKER & PERMANENT SURVEY MARKERS, TYPE II (66.2)
- 19 HOT -MIX ASPHALT APPROACHES AND MAILBOX RETURNS WITH NO HOT-MIX ASPHALT SHOULDERS (20.1)
- 20 TYPICAL PAVEMENT MARKINGS (41.1)
- 21- 22 DETAILS OF PLANTING AND BRACING TREES (92.1)
- 23- 24 CROSS SECTIONS

**STATE STANDARDS**

- 280001-04 TEMPORARY EROSION CONTROL SYSTEMS
- 420001-07 PAVEMENT JOINTS
- 442201-03 CLASS C AND D PATCHES
- 542206-01 REINFORCED CONCRETE END SECTIONS FOR PIPE CULVERTS, 1050 MM (42") THRU 1500 MM (60") DIAMETER SKEWED WITH ROADWAY
- 542301-02 PRECAST REINFORCED CONCRETE PLATED END SECTION
- 542401-01 METAL END SECTION FOR PIPE CULVERTS
- 635001-01 DELINEATORS
- 666001-01 RIGHT-OF-WAY MARKERS
- 667101-01 PERMANENT SURVEY MARKERS
- 701001-02 OFF-ROAD OPERATIONS, 2L, 2W, MORE THAN 4.5M (15') AWAY
- 701006-03 OFF-ROAD OPERATIONS, 2L, 2W, 4.5M (15') TO 600 MM (24") FROM PAVEMENT EDGE
- 701011-02 OFF-ROAD MOVING OPERATIONS, 2L, 2W, DAY ONLY
- 701201-03 LANE CLOSURE, 2L, 2W, DAY ONLY, FOR SPEEDS >45 MPH
- 701301-03 LANE CLOSURE, 2L, 2W, SHORT TIME OPERATIONS
- 701311-03 LANE CLOSURE, 2L, 2W, MOVING OPERATIONS - DAY ONLY
- 701901-01 TRAFFIC CONTROL DEVICES
- 720011-01 METAL POSTS FOR SIGNS, MARKERS AND DELINEATORS
- 728001-01 TELESCOPING STEEL SIGN SUPPORT
- 729001-01 APPLICATIONS OF TYPES A AND B METAL POSTS (FOR SIGNS & MARKERS)
- 780001-02 TYPICAL PAVEMENT MARKINGS
- 000001-05 STANDARD SYMBOLS, ABBREVIATIONS AND PATTERNS
- 001001-02 AREAS OF REINFORCEMENT BARS
- 001006 DECIMAL OF AN INCH AND OF A FOOT



FULL SIZE PLANS HAVE BEEN PREPARED USING STANDARD ENGINEERING SCALES. REDUCED SIZED PLANS WILL NOT CONFORM TO STANDARD SCALES. IN MAKING MEASUREMENTS ON REDUCED PLANS, THE ABOVE SCALES MAY BE USED.

J.U.L.I.E.  
JOINT UTILITY LOCATION INFORMATION FOR EXCAVATION  
1-800-892-0123  
OR 811

ANDELUSIA TOWNSHIP, SECTION 26

GROSS LENGTH OF PROJECT = 53 LIN. FT. = 0.010 MILES  
NET LENGTH OF PROJECT = 53 LIN. FT. = 0.010 MILES

**CONTRACT NO. 64C76**

STATE OF ILLINOIS  
DEPARTMENT OF TRANSPORTATION  
DIVISION OF HIGHWAYS

SUBMITTED Oct. 9, 2008

*George F. Ryman*  
DEPUTY DIRECTOR OF HIGHWAYS, REGION ENGINEER

December 5, 2008  
*Eric E. Harrel*  
INTERIM ENGINEER OF DESIGN AND ENVIRONMENT

December 5, 2008  
*Christine M. Reed*  
DIRECTOR OF HIGHWAYS, CHIEF ENGINEER

**PRINTED BY THE AUTHORITY  
OF THE STATE OF ILLINOIS**

PROJECT ENGINEER: REBECCA MARRUFFO

SQUAD LEADER: THOMAS HALLA (815)-284-5993

# SUMMARY OF QUANTITIES

80% FED.  
20% STATE  
Y007

CODE NUMBER	ITEM	UNIT	TOTAL QUANTITY
20100110	TREE REMOVAL (6 TO 15 UNITS DIAMETER)	UNIT	38
20100210	TREE REMOVAL (OVER 15 UNITS DIAMETER)	UNIT	15
20200100	EARTH EXCAVATION	CU YD	280
20400800	FURNISHED EXCAVATION	CU YD	55
25000750	MOWING	ACRE	0.6
25100630	EROSION CONTROL BLANKET	SQ YD	47
25100900	TURF REINFORCEMENT MAT	SQ YD	59
28000250	TEMPORARY EROSION CONTROL SEEDING	POUND	80
28000300	TEMPORARY DITCH CHECKS	EACH	2
28000400	PERIMETER EROSION BARRIER	FOOT	143
28000500	INLET AND PIPE PROTECTION	EACH	2
28100107	STONE RIPRAP, CLASS A4	SQ YD	24
28200200	FILTER FABRIC	SQ YD	24
35101400	AGGREGATE BASE COURSE, TYPE B	TON	137
44201383	CLASS C PATCHES, TYPE IV, 12 INCH	SQ YD	154
48101200	AGGREGATE SHOULDER, TYPE B	TON	70
50100100	REMOVAL OF EXISTING STRUCTURES	EACH	1
54213693	PRECAST REINFORCED CONCRETE FLARED END SECTIONS 48"	EACH	1
542A0253	PIPE CULVERTS, CLASS A, TYPE 1 48"	FOOT	84
542D0220	PIPE CULVERTS, CLASS D, TYPE 1 15"	FOOT	67
54213450	END SECTIONS 15"	EACH	1
63200310	GUARDRAIL REMOVAL	FOOT	95
63500105	DELINEATORS	EACH	3
66600105	FURNISHING AND ERECTING RIGHT-OF-WAY MARKERS	EACH	10
66700305	PERMANENT SURVEY MARKERS, TYPE II	EACH	1
67100100	MOBILIZATION	L SUM	1
70100450	TRAFFIC CONTROL AND PROTECTION, STANDARD 701201	L SUM	1
* 78001110	PAINT PAVEMENT MARKING-LINE 4'	FOOT	1067
Z0005400	BREAKER-RUN CRUSHED STONE	TON	30
Z0013798	CONSTRUCTION LAYOUT	L SUM	1
X0323660	DROP BOX NO. 1	EACH	1
X0712400	TEMPORARY PAVEMENT	SQ YD	14
XX001135	PAVEMENT PATCHING SPECIAL	SQ YD	154
* A2006514	TREE QUERCUS BICOLOR (SWAMP WHITE OAK), 1-34" CALIPER, BALLED AND BURLAPPED	EACH	6

● NON-PARTICIPATING  
\* SPECIALTY ITEM

# GENERAL NOTES

ROUTE NO.	SEC.	COUNTY	TOTAL SHEETS	SHEET NO.
FAP 599 (IL 92) (42MFT)T-1		Rock Island	26	3
FED ROAD DIST. NO.	ILLINOIS	PROJECT		
Contract #64C76				

See cross sections for special ditches and backslopes.

The removal of Bituminous Surfacing not on a rigid type base removed in conjunction with the base shall be removed as EARTH EXCAVATION. The removal of Bituminous Surfacing on a rigid type base removed in conjunction with the base shall be included in the contract unit price for PAVEMENT REMOVAL of the type specified.

The final top 100 mm (four inches) of soil in any right-of-way area disturbed by the Contractor must be capable of supporting vegetation. The soil must be from the A horizon (zero to 2' deep) of soil profiles of local soils.

It is estimated that 55 cubic yards of earth will be hauled to the job from outside the project limits. A shrinkage factor of 10% has been used.

All Borrow/Waste/Use sites must be approved by the Department prior to removing any material from the project or initiating any earthmoving activities, including temporary stockpiling outside the limits of construction.

The Contractor shall seed all disturbed areas within the project limits. Seeding Class 4 or 2A shall be used, except in front of properties where the grass will be mowed, then use Seeding, Class 1. Class 2A shall be used on front slopes and ditch bottoms. Class 4 shall be used behind Type A gutter, on all backslopes and areas behind the backslope, and beyond the toe of front slope on fill sections without ditches. **(Include the following sentence ONLY if seeding is less than 0.2 Hectares (0.5 Ac.)** This work will be included in the contract unit price per Cubic Meter (Cubic Yard) for EARTH EXCAVATION.

Fertilizer shall be applied to all disturbed areas and incorporated into the seedbed prior to seeding or placement of sod at the rate specified in Sections 250 and 252 of the Standard Specifications. This work shall be included in the cost of EARTH EXCAVATION.

Fertilizer Nutrients shall be applied at the rate specified in Sections 250 and 252 of the Standard Specifications. This shall be included in the cost of the EARTH EXCAVATION.

Previously pugmilled stockpiles of "Type A" older than 1 month will not be approved for use until a moisture check is run to verify moisture content. Material shipped to projects without being tested will not be accepted.

Placement and compaction of the backfill for proposed across road culverts and existing across road culverts that are removed shall conform to Section 502.10 of the Standard Specifications, except that the material shall conform to Article 208.02 of the Standard Specifications, and shall be compacted to a minimum of 95% of the standard laboratory density. Any material conforming to the requirements of Article 1003.04 or 1004.05 which has been excavated from the trenches shall be used for backfilling the trenches. The entire excavation, within 2 feet outside of each shoulder, shall be backfilled with trench backfill material to the bottom of the proposed subgrade. This trench backfill material will not be measured for payment, but shall be included in the contract unit price for PIPE CULVERTS, CLASS A, TYPE 1, 48".

Except for the top 75 mm (3"), all aggregate bases and subbases 300 mm (12") in thickness shall be constructed of aggregate gradation CA-2. If the specified thickness exceeds 300 mm (12"), the bases or subbases shall be constructed of topsize 150 mm (6") breaker-run crushed stone with 70% to 90% by weight, passing the 4" sieve and 15% to 40% by weight, passing the 50 mm (2") size sieve, except for the top 75 mm (3"). The breaker-run crushed stone shall be reasonably uniformly graded from coarse to fine and be taken from a quarry ledge capable of producing Class "D" quality aggregate. The top 75 mm (3") shall be gradation CA-6 or CA-10 regardless of thickness. The water necessary to achieve compaction in all but the top 75 mm (3") layer may be added after the subbase or base course is placed on the grade.

The Contractor will be required to furnish 140 mm (5 1/2") high brass stencils as approved by the Engineer and install stationing at 250' intervals. Stationing shall be placed on both lanes of 2-lane highways. The stations shall be placed 150 mm (6") inside the pavement marking edge on the patch so they can be read from the shoulder. This work will be included in the cost of the final pavement surface.

The new number for the structure at Sta. 1096+37 will be 081-1112

Mulch Method II shall be applied over all permanent and temporary seeded areas. This shall be included in the cost of EARTH EXCAVATION.

Culvert & bridge flows must be maintained throughout the project. Normal flow shall be allowed to pass at the rate it enters the jobsite. High flows shall be allowed to pass without causing damage to upstream properties.

Culverts that are stage constructed and undercut by more than 600 mm (2 feet) shall have lean concrete placed on the rock fill at the stage line. The concrete shall retain the rock fill until the second stage rock fill is placed. This work will be included in the pay item for the type of rock fill used.

Connecting bands for corrugated metal pipes shall be metal and shall be coated with the same material as the pipe sections. The connecting bands shall be a minimum of 18" wide.

Delineators shall be installed as shown in Standard 635001, except that the post shall be rotated 180° and only metal-backed delineators shall be permitted.

Delineators shall be placed at the ends of approach guardrail terminal sections, and at each headwall or end section of AR Culverts. This work will be paid for at the contract unit price each for DELINEATORS.

Pavement Marking shall be done according to Standard 780001, except as follows:

1. The distance between yellow no-passing lines shall be 200 mm (8"), not 180 mm (7") as shown in the detail of Typical Lane and Edge Lines.

PERMANENT SURVEY MARKERS, TYPE II, shall be set at intervals of 1.6 Km (1 mile) or as directed by the Engineer. Bridge or culvert projects shall have one survey marker placed near the structure.

Permanent Survey Markers, Type II shall be cast-in-place as shown on District Standard 66.2. The bottom of the marker shall be 5'-0" below the ground surface.

The Contractor shall submit to the Engineer a description of location, elevation, and coordinates for each permanent survey marker. The Engineer shall submit this information to the Survey Crew.

Tree planting layout shall be performed by the District Landscape Architect. Mulch shall be placed 4" thick in a 5 foot diameter around the tree. The mulch shall be hardwood wood chips placed on weed barrier fabric. This work shall be included in the cost of the tree.

Aggregate Base Course, Type B, is provided in the plan quantities and shall be used only as needed when directed by the Engineer.

Right-of-way markers will be erected with the back face of the marker on the right-of-way line unless the new right-of-way line has been surveyed and pinned, in which instance the right-of-way markers will be erected 300 mm (12 inches) inside the new right-of-way line.

Program #5  
(Arch. Size)  
Enlarge  
200%  
Enlarge 107%

# GENERAL NOTES

ROUTE NO.	SEC.	COUNTY	TOTAL SHEETS	SHEET NO.
FAP 599 (IL 92)	(42MFT)T-1	Rock Island	26	4
FED ROAD DIST. NO.	ILLINOIS	PROJECT		

Contract #64C76

The Contractor shall be responsible for protecting utility property during construction operations as outlined in Article 107.31 of the Standard Specifications. A minimum of 48 hours advance notice is required for non-emergency work. The JULIE number is 800-892-0123. The following listed utilities located within the project limits or immediately adjacent to the project construction limits are members of JULIE:

Commonwealth Edison Co.

Frontier/Citizens

CADD data will be available to Contractors and Consultants working on this project. This information will be provided upon request as MicroStation CADD files and Geopak coordinate geometry files ONLY. If data is required in other formats it will be your responsibility to make these conversions. If any discrepancy or inconsistency arises between the electronic data and the information on the hard copy, the information on the hard copy should be used. Contact the District's Project Engineer to request these files.

Program #5  
(Arch. Size)  
Enlarge  
200%  
Enlarge 107%

# SCHEDULE OF QUANTITIES

20100110 TREE REMOVAL (6 TO 15 UNITS DIAMETER)

UNIT	LOCATION	REMARKS
6	RT 66' 1096 + 5	
8	RT 68' 1096 + 5	
8	LT 30' 1096 + 40	
10	RT 60' 1096 + 20	
6	RT 75' 1096 + 20	
<b>38</b>	<b>TOTAL</b>	

20100210 TREE REMOVAL (OVER 15 UNITS DIAMETER)

UNIT	LOCATION	REMARKS
15	RT 60' 1096 + 5	
<b>15</b>	<b>TOTAL</b>	

20200100 EARTH EXCAVATION

CU_YD	LOCATION	REMARKS
280	1095 + 0 TO 1096 + 50	
<b>280</b>	<b>TOTAL</b>	

25100630 EROSION CONTROL BLANKET

SQ_YD	LOCATION	REMARKS
47	RT. STA 1095 + 0 TO 1095 + 70	
<b>47</b>	<b>TOTAL</b>	

25100900 TURF REINFORCEMENT MAT

SQ_YD	LOCATION	REMARKS
33.0	RT. STA 1096 + 25 TO 1096 + 80	
26.0	RT. STA 1096 + 25	IN CHANNEL
<b>59.0</b>	<b>TOTAL</b>	

28000300 TEMPORARY DITCH CHECKS

EACH	LOCATION	REMARKS
1	RT. STA 1095 + 50	
1	RT. STA 1096 + 50	
<b>2</b>	<b>TOTAL</b>	

28000400 PERIMETER EROSION BARRIER

FOOT	LOCATION	REMARKS
68.0	LT. STA. 1095 + 50 TO 1096 + 10	
75.0	LT. STA. 1096 + 40 TO 1097 + 0	
<b>143.0</b>	<b>TOTAL</b>	

28000500 INLET AND PIPE PROTECTION

EACH	LOCATION	REMARKS
1	RT. STA 1095 + 60	
1	RT. STA 1096 + 35	Culvert AR CULVERT
<b>2</b>	<b>TOTAL</b>	

28100107 STONE RIPRAP, CLASS A4

SQ_YD	LOCATION	REMARKS
24	LT. STA. 1096 + 50	7' X 30'
<b>24</b>	<b>TOTAL</b>	

28200200 FILTER FABRIC

SQ_YD	LOCATION	REMARKS
24	LT. STA. 1096 + 50	
<b>24</b>	<b>TOTAL</b>	

35101400 AGGREGATE BASE COARSE, TYPE B

ION	LOCATION	REMARKS
60	STA. 1096 + 4	LEFT
50	STA. 1095 + 92	RIGHT
27	STA. 1095 + 70 TO 1095 + 32	STAGE 1, 6" THICK, TAPER
	1096 + 42 TO 1097 + 2	STAGE 1, 6" THICK, TAPER
<b>137</b>	<b>TOTAL</b>	

44201383 CLASS C PATCHES, TYPE IV, 12 INCH

SQ_YD	LOCATION	REMARKS
154	1096 + 11 TO 1096 + 64	
<b>154</b>	<b>TOTAL</b>	

48101200 AGGREGATE SHOULDERS TYPE B

ION	LOCATION	REMARKS
20.0	LT 1095 + 70 TO 1097 + 0	
50	RT 1094 + 63 TO 1097 + 0	
<b>70.0</b>	<b>TOTAL</b>	

50100100 REMOVAL OF EXISTING STRUCTURES

EACH	LOCATION	REMARKS
1.0	1096 + 37	
<b>1.0</b>	<b>TOTAL</b>	

54213693 PRECAST REINFORCED CONCRETE FLARED END SECTION 48"

EACH	LOCATION	REMARKS
1.0	LT 1096 + 54	
<b>1.0</b>	<b>TOTAL</b>	

54213450 END SECTIONS 15"

EACH	LOCATION	REMARKS
1.0	RT 1095 + 60	
<b>1.0</b>	<b>TOTAL</b>	

# SCHEDULE OF QUANTITIES

542A0253 PIPE CULVERTS, CLASS A, TYPE I, 48"

FEET	LOCATION	REMARK'S
84.0	1096 + 25RT TO 1096 + 54LT	AR CULVERT ON SKEW
84.0	TOTAL	

542D0220 PIPE CULVERTS, CLASS D, TYPE I, 15"

FEET	LOCATION	REMARK'S
67.0	RT 1095 + 70 TO 1096 + 30	
67.0	TOTAL	

63200310 GUARDRAIL REMOVAL

FOOT	LOCATION	REMARK'S
95	LT. STA. 1096 + 15 TO 1097 + 10	
95	TOTAL	

63500105 DELINEATORS

EACH	LOCATION	REMARK'S
2	LT/RT 1096 + 40	AR Culvert
1	RT 1095 + 55	FE Culvert
3	TOTAL	

66600105 FURNISHING AND ERECTING RIGHT OF WAY MARKERS

EACH	LOCATION	REMARK'S
1	LT 1095 + 33	33' LEFT
1	LT 1095 + 50	50' LEFT
1	LT 1096 + 25	85' LEFT
1	LT 1096 + 65	85' LEFT
1	LT 1097 + 33	33' LEFT
1	RT 1093 + 94	38' RIGHT
1	RT 1095 + 50	55' RIGHT
1	RT 1096 + 10	80' RIGHT
1	RT 1096 + 50	80' RIGHT
1	RT 1097 + 0	42.75 RIGHT
10	TOTAL	

66700305 PERMANENT SURVEY MARKERS, TYPE II

EACH	LOCATION	REMARK'S
1		TO BE DETERMINED IN FIELD BY ENGINEER
1	TOTAL	

78001110 PAINT PAVEMENT MARKING - LINE 4"

FOOT	LOCATION	REMARK'S
948	LT/RT 1094 + 63 TO 1097 + 0	WHITE EDGE LINES (TWO COATS)
119	1094 + 63 TO 1097 + 0	YELLOW SKIP DASH (TWO COATS)
1067	TOTAL	

X0323660 DROP BOX NO. 1

EACH	LOCATION	REMARK'S
1	RT 42' 1096 + 25	
1	TOTAL	

X0712400 TEMPORARY PAVEMENT

SQ_YD	LOCATION	REMARK'S
14	RT 1096 + 32 TO 1096 + 42	STAGE I
14	TOTAL	

XX001135 PAVEMENT PATCHING SPECIAL

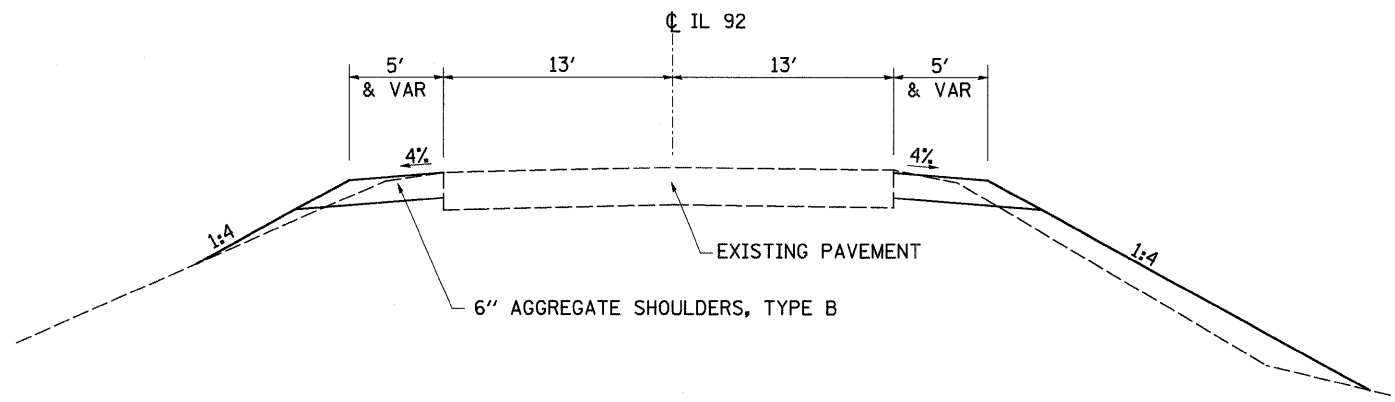
SQ_YD	LOCATION	REMARK'S
154	1096 + 11 TO 1096 + 64	
154	TOTAL	

Z0005400 BREAKER RUN CRUSHED STONE

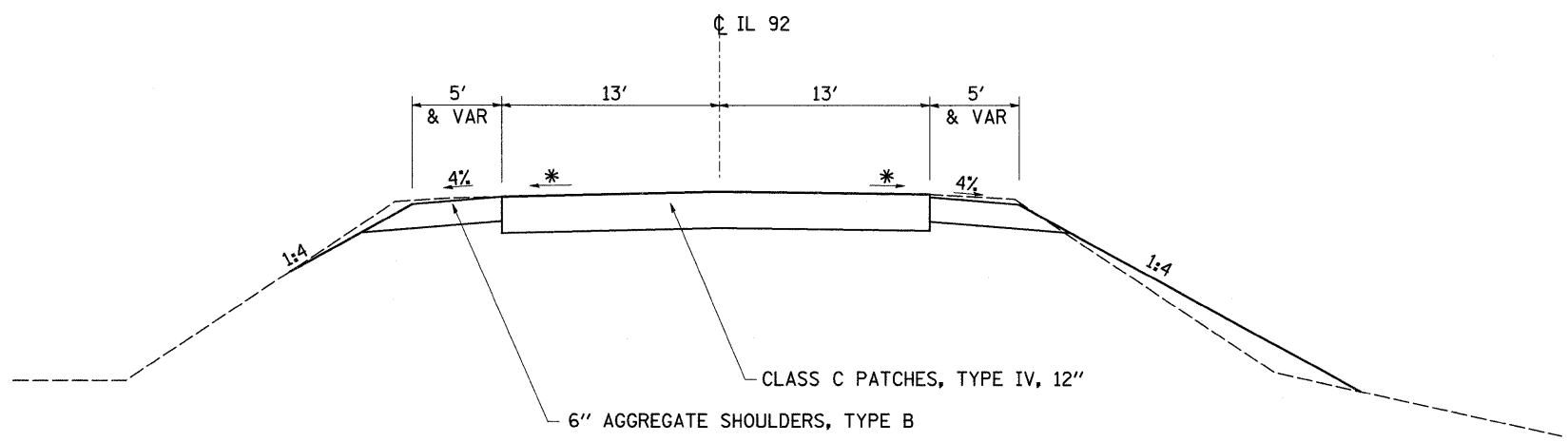
TON	LOCATION	REMARK'S
30	1096 + 37	12" THICK X 5' WIDE UNDER PIPE
30	TOTAL	

# TYPICAL SECTIONS

STA. 1094+63 RT TO STA. 1097+00 RT  
 STA. 1095+60.48 LT TO STA. 1097+00 LT



STA. 1096+11 - STA. 1096+64



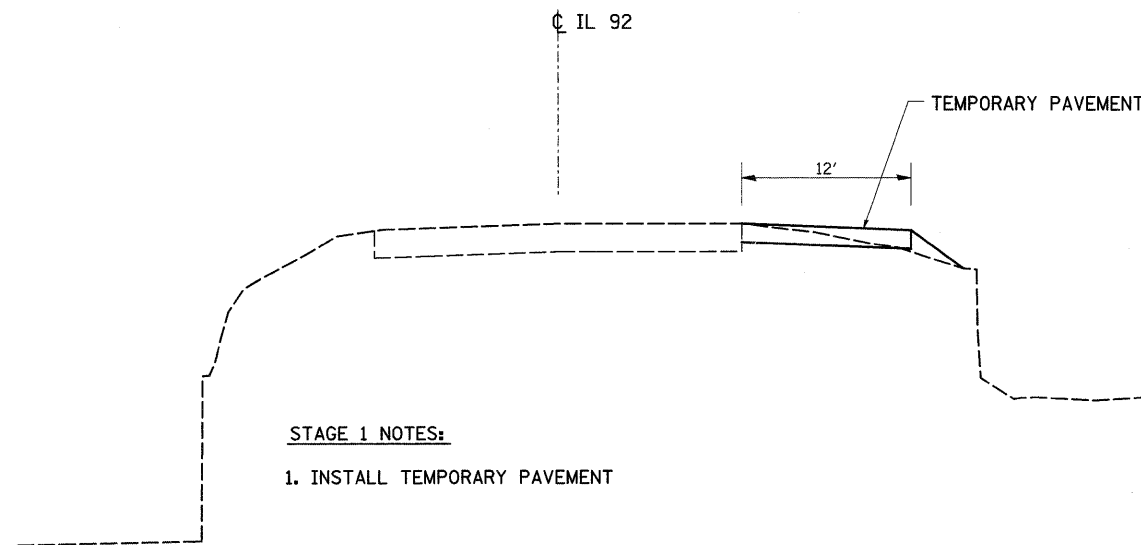
\* MATCH EXISTING MAINLINE SLOPE

FILE NAME =	USER NAME = hensonke	DESIGNED -	REVISED -	<b>STATE OF ILLINOIS DEPARTMENT OF TRANSPORTATION</b>	<b>TYPICAL SECTIONS</b>				F.A.P. RTE.	SECTION	COUNTY	TOTAL SHEETS	SHEET NO.
at\pwork\pwork\hensonke\dms31385\d00707typ.dgn	DRAWN -	REVISED -	599						(42MFT)-1	ROCK ISLAND	26	7	
PLOT SCALE = 50.0000' / IN.	CHECKED -	REVISED -	CONTRACT NO. 64C76										
PLOT DATE = Thu Oct 09 07:34:05 2008	DATE -	REVISED -	SCALE:		SHEET NO.	OF	SHEETS	STA.	TO STA.	FED. ROAD DIST. NO.	ILLINOIS FED. AID PROJECT		

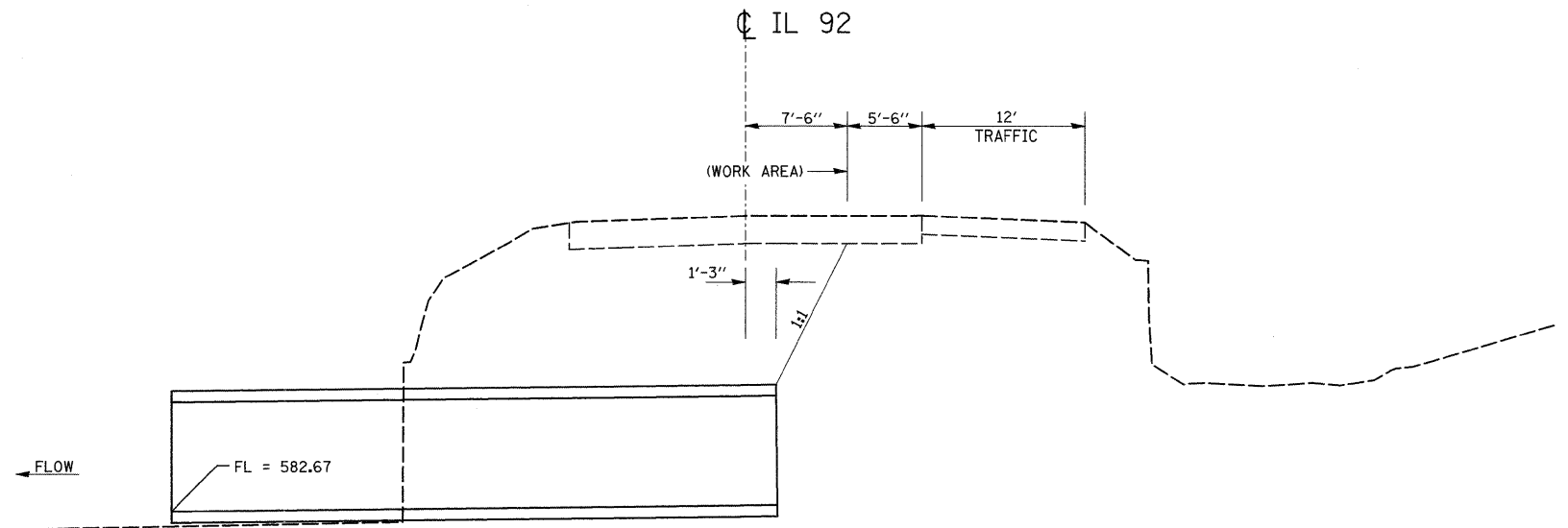
# STAGING TYPICALS

## 48" PIPE CULVERT AT STA. 1096 + 37

STAGE 1



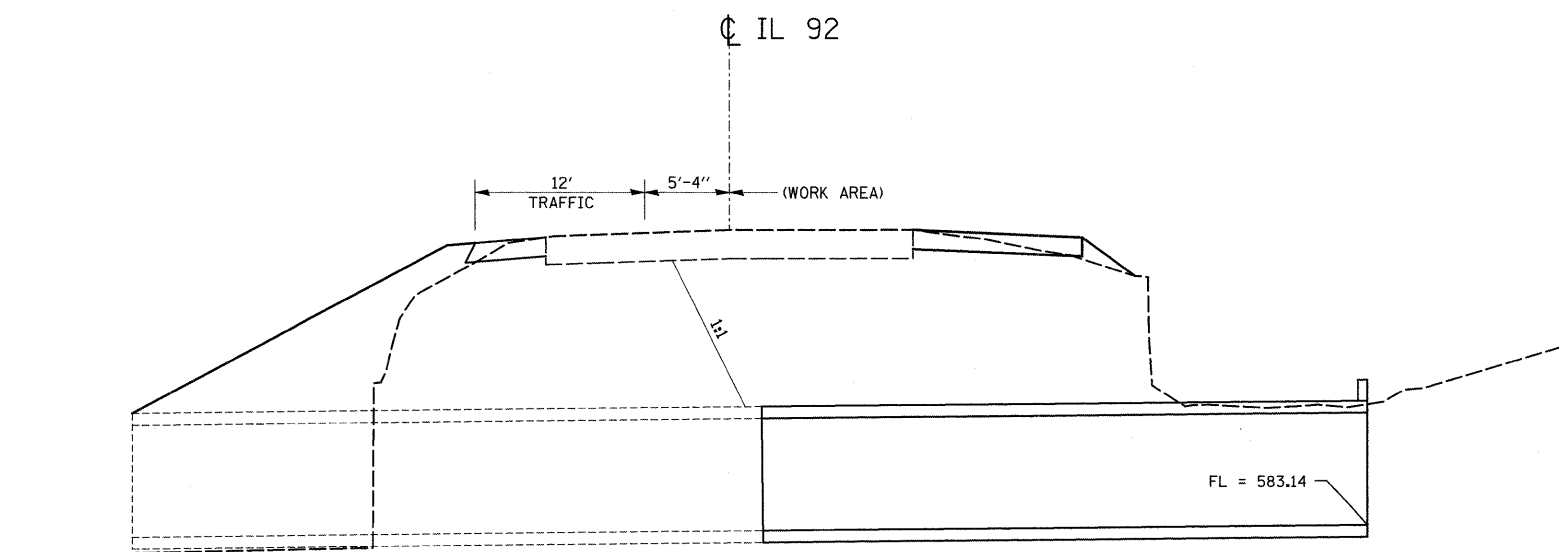
STAGE 2



**STAGE 2 NOTES:**

1. REMOVE AND REPLACE DOWNSTREAM HALF OF STRUCTURE.
2. PLACE TEMPORARY PATCH.

STAGE 3



**STAGE 3 NOTES:**

1. REMOVE AND REPLACE UPSTREAM HALF OF STRUCTURE.
2. PLACE TEMPORARY PATCH.

**GENERAL NOTES:**

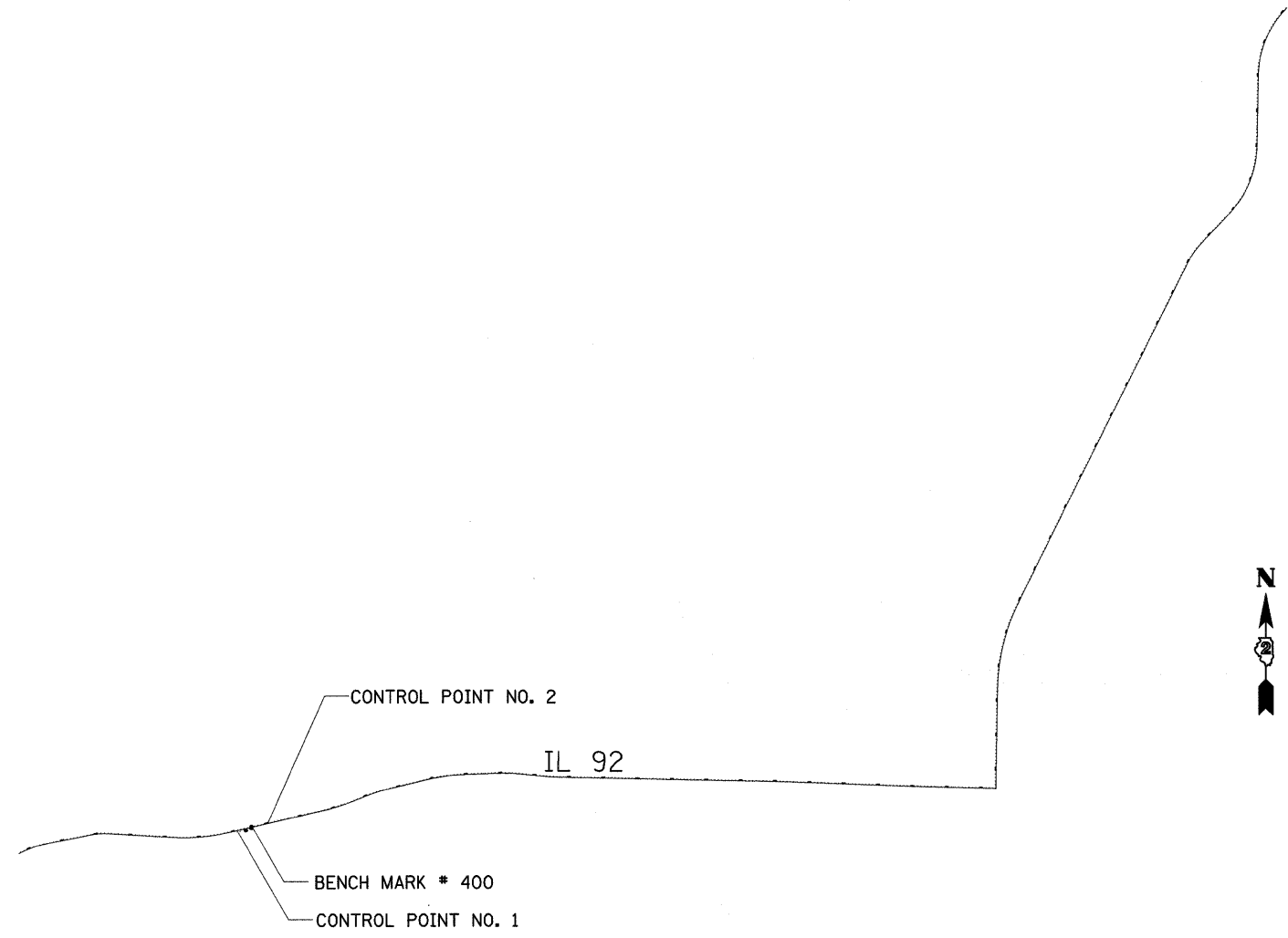
1. WORK FOR STAGE 2 & 3 SHALL BE SCHEDULED FOR EACH STAGE TO BE COMPLETED IN ONE WORKING DAY.
2. ALL WORK SHALL BE COMPLETED WITH DAYTIME TRAFFIC CONTROL AND FLAGGERS FOR LANE CLOSURE.

FILE NAME =	USER NAME = hensonke	DESIGNED -	REVISED -	<b>STATE OF ILLINOIS DEPARTMENT OF TRANSPORTATION</b>	<b>STAGING TYPICAL SECTIONS</b>	F.A.P. RTE.	SECTION	COUNTY	TOTAL SHEETS	SHEET NO.	
cs:\pvt\work\pvt\dot\hensonke\dms31385\d00707.tpdgn		DRAWN -	REVISED -			599	(42MFT)-1	ROCK ISLAND	26	8	
PLOT SCALE = 50.0000' / IN.		CHECKED -	REVISED -			CONTRACT NO. 64C76					
PLOT DATE = Thu Oct 09 07:34:05 2008		DATE -	REVISED -			FED. ROAD DIST. NO. ILLINOIS FED. AID PROJECT					
						SCALE:	SHEET NO. OF SHEETS	STA. TO STA.			

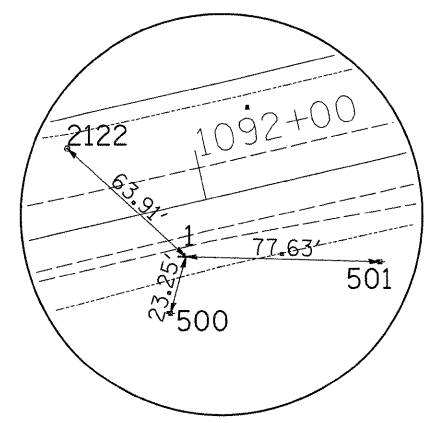


# HORIZONTAL & VERTICAL CONTROL

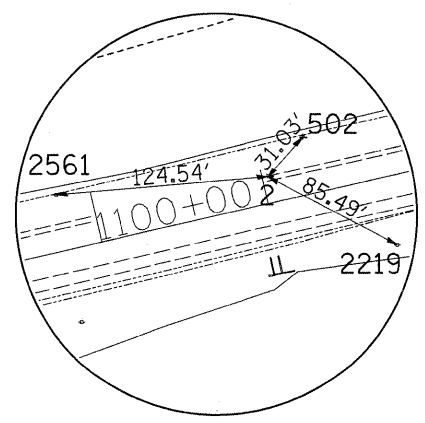
CURVE POINT NUMBERS					
CHAIN	CURVE	PI	CC	PC	PT
IL92	200	200	201	202	203
IL92	210	210	211	212	213
IL92	220	220	221	222	223
IL92	230	230	231	232	233
IL92	240	240	241	242	243
IL92	250	250	251	252	253
IL92	260	260	261	262	263
IL92	270	270	271	272	273
IL92	280	280	281	282	283
IL92	290	290	291	292	293
IL92	300	300	301	302	303
IL92	310	310	311	312	313
IL92	320	320	321	322	323
IL92	330	330	331	332	333



REFERENCE TIES				
POINT	CHAIN	STATION	OFFSET	DESCRIPTION
500	IL92	1091+75.9915	40.8008' RT	POWER POLE, SHINER
501	IL92	1092+62.0553	39.7639' RT	POWER POLE, SHINER
502	IL92	1101+28.9466	33.2654' LT	WARNING SIGN
2122	IL92	1091+50.5467	32.1931' LT	TREE DECIDUOUS 46 IN
2219	IL92	1101+68.3950	40.1197' RT	POWER POLE
2561	IL92	1099+80.0822	32.8907' LT	POWER POLE



HORIZONTAL CONTROL POINT NO. 1



HORIZONTAL CONTROL POINT NO. 2

HORIZONTAL CONTROL POINTS							
POINT	NORTH	EAST	ELEVATION	CHAIN	STATION	OFFSET	DESCRIPTION
1	1738894.4349	2150073.9265	592.1670	IL92	1091+87.14	19.7095' RT	GPS CONTROL POINT, PIN
2	1739134.7005	2150958.9668	594.5543	IL92	1101+03.52	15.9782' LT	GPS CONTROL POINT, PIN

BENCH MARKS							
POINT	NORTH	EAST	ELEVATION	CHAIN	STATION	OFFSET	DESCRIPTION
400	1738985.7563	2150523.7054	591.2786	IL92	1096+45.94	31.571' RT	DITCH CHECK, CHISELED SQUARE

SURVEY WORK POINTS							
POINT	NORTH	EAST	ELEVATION	CHAIN	STATION	OFFSET	DESCRIPTION
100	1738919.9996	2150312.7499	596.5998	IL92	1094+25.61	48.349' RT	TRAVERSE STATION, NAIL
101	1739027.9620	2150483.7330	592.4374	IL92	1096+16.45	18.5232' LT	TRAVERSE STATION, NAIL
102	1738985.1712	2150478.0713	593.0817	IL92	1096+01.34	21.9083' RT	TRAVERSE STATION, NAIL

FILE NAME =	USER NAME = hensonke	DESIGNED -	REVISED -
at:\pwwork\pwwork\hensonke\dms31385\d0077hvc.dgn		DRAWN -	REVISED -
		CHECKED -	REVISED -
		DATE -	REVISED -

STATE OF ILLINOIS  
DEPARTMENT OF TRANSPORTATION

## HORIZONTAL & VERTICAL CONTROL

SCALE: SHEET NO. OF SHEETS STA. TO STA.

F.A.P. RTE.	SECTION	COUNTY	TOTAL SHEETS	SHEET NO.
599	(42MFT)T-1	ROCK ISLAND	26	9
FED. ROAD DIST. NO.		ILLINOIS FED. AID PROJECT		
		CONTRACT NO. 64C76		

# HORIZONTAL & VERTICAL CONTROL

Chain IL92 contains:  
 1263 CUR 200 CUR 210 CUR 220 CUR 230 CUR 240 CUR 250 CUR 260 CUR 270 CUR 280 C-  
 UR 290 340 CUR 300 CUR 310 CUR 320 CUR 330

Beginning chain IL92 description  
 =====

Point 1263 N 1,738,253.6860 E 2,143,717.7880 Sta 1027+36.06

Course from 1263 to PC 200 65° 30' 54.04" Dist 181.1115'

Curve Data  
 \*-----\*

**Curve 200**  
 P.I. Station 1032+46.49 N 1,738,465.2352 E 2,144,182.3128  
 Delta = 13° 14' 05.56" (RT)  
 Degree = 2° 01' 06.36"  
 Tangent = 329.3161'  
 Length = 655.7010'  
 Radius = 2,838.6282'  
 External = 19.0385'  
 Long Chord = 654.2442'  
 Mid. Ord. = 18.9117'  
 P.C. Station 1029+17.17 N 1,738,328.7485 E 2,143,882.6121  
 P.T. Station 1035+72.87 N 1,738,529.4822 E 2,144,505.3010  
 C.C. N 1,735,745.3986 E 2,145,059.0953

Course from PT 200 to PC 210 78° 44' 59.60" Dist 1,347.0705'

Curve Data  
 \*-----\*

**Curve 210**  
 P.I. Station 1051+63.76 N 1,738,839.8520 E 2,146,065.6195  
 Delta = 14° 39' 37.01" (RT)  
 Degree = 3° 01' 22.52"  
 Tangent = 243.8170'  
 Length = 484.9707'  
 Radius = 1,895.3780'  
 External = 15.6177'  
 Long Chord = 483.6489'  
 Mid. Ord. = 15.4900'  
 P.C. Station 1049+19.94 N 1,738,792.2852 E 2,145,826.4875  
 P.T. Station 1054+04.91 N 1,738,825.3489 E 2,146,309.0048  
 C.C. N 1,736,933.3270 E 2,146,196.2610

Course from PT 210 to PC 220 93° 24' 36.61" Dist 1,863.7728'

Curve Data  
 \*-----\*

**Curve 220**  
 P.I. Station 1080+91.84 N 1,738,665.5209 E 2,148,991.1734  
 Delta = 16° 22' 05.62" (LT)  
 Degree = 1° 00' 03.80"  
 Tangent = 823.1535'  
 Length = 1,635.0951'  
 Radius = 5,723.5306'  
 External = 58.8897'  
 Long Chord = 1,629.5406'  
 Mid. Ord. = 58.2899'  
 P.C. Station 1072+68.69 N 1,738,714.4850 E 2,148,169.4774  
 P.T. Station 1089+03.78 N 1,738,850.1030 E 2,149,793.3649  
 C.C. N 1,744,427.8809 E 2,148,509.9335

Course from PT 220 to PC 230 77° 02' 31.00" Dist 2,841.8663'

Curve Data  
 \*-----\*

**Curve 230**  
 P.I. Station 1121+77.74 N 1,739,584.2486 E 2,152,983.9533  
 Delta = 8° 35' 03.57" (LT)  
 Degree = 0° 59' 42.72"  
 Tangent = 432.0952'  
 Length = 862.5733'  
 Radius = 5,757.2162'  
 External = 16.1922'  
 Long Chord = 861.7667'  
 Mid. Ord. = 16.1468'  
 P.C. Station 1117+45.65 N 1,739,487.3566 E 2,152,562.8616  
 P.T. Station 1126+08.22 N 1,739,742.9094 E 2,153,385.8650  
 C.C. N 1,745,097.9623 E 2,151,271.8766

Course from PT 230 to PC 240 68° 27' 27.43" Dist 536.0304'

Curve Data  
 \*-----\*

**Curve 240**  
 P.I. Station 1133+93.13 N 1,740,031.1179 E 2,154,115.9408  
 Delta = 8° 01' 59.09" (RT)  
 Degree = 1° 36' 59.53"  
 Tangent = 248.8739'  
 Length = 496.9322'  
 Radius = 3,544.3581'  
 External = 8.7268'  
 Long Chord = 496.5253'  
 Mid. Ord. = 8.7054'  
 P.C. Station 1131+44.25 N 1,739,939.7340 E 2,153,884.4517  
 P.T. Station 1136+41.18 N 1,740,089.2556 E 2,154,357.9288  
 C.C. N 1,736,642.9627 E 2,155,185.9022

Course from PT 240 to PC 250 76° 29' 26.52" Dist 1,216.6225'

Curve Data  
 \*-----\*

**Curve 250**  
 P.I. Station 1154+13.71 N 1,740,503.3231 E 2,156,081.4118  
 Delta = 11° 16' 45.03" (RT)  
 Degree = 1° 01' 04.01"  
 Tangent = 555.9027'  
 Length = 1,108.2125'  
 Radius = 5,629.4809'  
 External = 27.3807'  
 Long Chord = 1,106.4239'  
 Mid. Ord. = 27.2482'  
 P.C. Station 1148+57.81 N 1,740,373.4625 E 2,155,540.8898  
 P.T. Station 1159+66.02 N 1,740,524.9551 E 2,156,636.8934  
 C.C. N 1,734,899.7380 E 2,156,855.9545

Course from PT 250 to PC 260 87° 46' 11.55" Dist 941.5830'

Curve Data  
 \*-----\*

**Curve 260**  
 P.I. Station 1173+15.13 N 1,740,577.4535 E 2,157,984.9871  
 Delta = 8° 14' 15.44" (RT)  
 Degree = 1° 00' 44.69"  
 Tangent = 407.5325'  
 Length = 813.6605'  
 Radius = 5,659.3162'  
 External = 14.6544'  
 Long Chord = 812.9599'  
 Mid. Ord. = 14.6166'  
 P.C. Station 1169+07.60 N 1,740,561.5951 E 2,157,577.7633  
 P.T. Station 1177+21.26 N 1,740,534.8017 E 2,158,390.2815  
 C.C. N 1,734,906.5653 E 2,157,797.9853

Course from PT 260 to PC 270 96° 00' 26.99" Dist 378.2472'

Curve Data  
 \*-----\*

**Curve 270**  
 P.I. Station 1184+73.38 N 1,740,456.0864 E 2,159,138.2656  
 Delta = 4° 54' 36.84" (LT)  
 Degree = 0° 39' 25.50"  
 Tangent = 373.8674'  
 Length = 747.2771'  
 Radius = 8,719.7127'  
 External = 8.0113'  
 Long Chord = 747.0484'  
 Mid. Ord. = 8.0040'  
 P.C. Station 1180+99.51 N 1,740,495.2148 E 2,158,766.4514  
 P.T. Station 1188+46.79 N 1,740,448.9270 E 2,159,512.0644  
 C.C. N 1,749,167.0407 E 2,159,679.0444

Course from PT 270 to PC 280 91° 05' 50.15" Dist 5,836.4962'

Curve Data  
 \*-----\*

**Curve 280**  
 P.I. Station 1251+74.63 N 1,740,327.7505 E 2,165,838.7508  
 Delta = 0° 52' 23.89" (RT)  
 Degree = 0° 05' 19.93"  
 Tangent = 491.3505'  
 Length = 982.6819'  
 Radius = 64,471.8638'  
 External = 1.8723'  
 Long Chord = 982.6724'  
 Mid. Ord. = 1.8722'  
 P.C. Station 1246+83.28 N 1,740,337.1597 E 2,165,347.4904  
 P.T. Station 1256+65.96 N 1,740,310.8549 E 2,166,329.8107  
 C.C. N 1,675,877.1183 E 2,164,112.8728

Course from PT 280 to PC 290 91° 58' 14.05" Dist 2,897.1180'

Curve Data  
 \*-----\*

**Curve 290**  
 P.I. Station 1292+50.29 N 1,740,187.6037 E 2,169,912.0191  
 Delta = 0° 43' 01.96" (LT)  
 Degree = 0° 03' 07.86"  
 Tangent = 687.2101'  
 Length = 1,374.4022'  
 Radius = 109,796.6432'  
 External = 2.1506'  
 Long Chord = 1,374.3932'  
 Mid. Ord. = 2.1505'  
 P.C. Station 1285+63.08 N 1,740,211.2342 E 2,169,225.2154  
 P.T. Station 1299+37.49 N 1,740,172.5720 E 2,170,599.0647  
 C.C. N 1,849,942.9461 E 2,173,000.6970

Course from PT 290 to PC 300 91° 15' 12.08" Dist 1,550.7077'

Point 340 N 1,740,138.6527 E 2,172,149.4014 Sta 1314+88.19

Course from 340 to PC 300 1° 02' 25.97" Dist 2,906.6227'

Curve Data  
 \*-----\*

**Curve 300**  
 P.I. Station 1356+86.21 N 1,744,335.9743 E 2,172,225.6373  
 Delta = 25° 25' 06.20" (RT)  
 Degree = 1° 00' 02.21"  
 Tangent = 1,291.3911'  
 Length = 2,540.2825'  
 Radius = 5,726.0699'  
 External = 143.8166'  
 Long Chord = 2,519.5022'  
 Mid. Ord. = 140.2930'  
 P.C. Station 1343+94.82 N 1,743,044.7961 E 2,172,202.1856  
 P.T. Station 1369+35.10 N 1,745,492.0972 E 2,172,801.0247  
 C.C. N 1,742,940.8107 E 2,177,927.3113

Course from PT 300 to PC 310 26° 27' 32.17" Dist 10,982.9456'

FILE NAME =	USER NAME = hensonke	DESIGNED -	REVISED -	<b>STATE OF ILLINOIS DEPARTMENT OF TRANSPORTATION</b>	<b>HORIZONTAL &amp; VERTICAL CONTROL</b>	F.A.P RTE.	SECTION	COUNTY	TOTAL SHEETS	SHEET NO.	
ct:\pw_work\pindot\hensonke\dms31385\d007hvc.dgn		DRAWN -	REVISED -			599	(42MFT)-1	ROCK ISLAND	26	10	
PLOT SCALE = 2500.0000' / IN.		CHECKED -	REVISED -			CONTRACT NO. 64C76					
PLOT DATE = Thu Oct 09 07:39:32 2008		DATE -	REVISED -			ILLINOIS FED. AID PROJECT					
					SCALE:	SHEET NO.	OF	SHEETS	STA.	TO STA.	

# HORIZONTAL & VERTICAL CONTROL

Curve Data  
\*-----\*

Curve 310  
 P.I. Station 1483+61.65    N 1,755,721.7617    E 2,177,892.1964  
 Delta = 17° 19' 40.89" (RT)  
 Degree = 1° 58' 05.21"  
 Tangent = 443.6052'  
 Length = 880.4378'  
 Radius = 2,911.2013'  
 External = 33.6041'  
 Long Chord = 877.0862'  
 Mid. Ord. = 33.2206'  
 P.C. Station 1479+18.04    N 1,755,324.6224    E 2,177,694.5453  
 P.T. Station 1487+98.48    N 1,756,042.0082    E 2,178,199.1619  
 C.C.    N 1,754,027.5184    E 2,180,300.8097

Course from PT 310 to PC 320 43° 47' 13.06" Dist 1,092.6783'

Curve Data  
\*-----\*

Curve 320  
 P.I. Station 1510+08.65    N 1,757,637.5659    E 2,179,728.5498  
 Delta = 42° 40' 47.21" (LT)  
 Degree = 2° 00' 11.25"  
 Tangent = 1,117.4872'  
 Length = 2,130.6606'  
 Radius = 2,860.3206'  
 External = 210.5443'  
 Long Chord = 2,081.7402'  
 Mid. Ord. = 196.1090'  
 P.C. Station 1498+91.16    N 1,756,830.8321    E 2,178,955.2722  
 P.T. Station 1520+21.82    N 1,758,754.8444    E 2,179,750.1427  
 C.C.    N 1,758,810.1136    E 2,176,890.3561

Course from PT 320 to PC 330 1° 06' 25.85" Dist 2,012.3308'

Curve Data  
\*-----\*

Curve 330  
 P.I. Station 1551+90.36    N 1,761,922.7875    E 2,179,811.3674  
 Delta = 43° 55' 30.63" (RT)  
 Degree = 1° 59' 54.21"  
 Tangent = 1,156.2039'  
 Length = 2,198.0256'  
 Radius = 2,867.0937'  
 External = 224.3515'  
 Long Chord = 2,144.5923'  
 Mid. Ord. = 208.0700'  
 P.C. Station 1540+34.15    N 1,760,766.7995    E 2,179,789.0264  
 P.T. Station 1562+32.18    N 1,762,739.8853    E 2,180,629.3885  
 C.C.    N 1,760,711.3994    E 2,182,655.5848

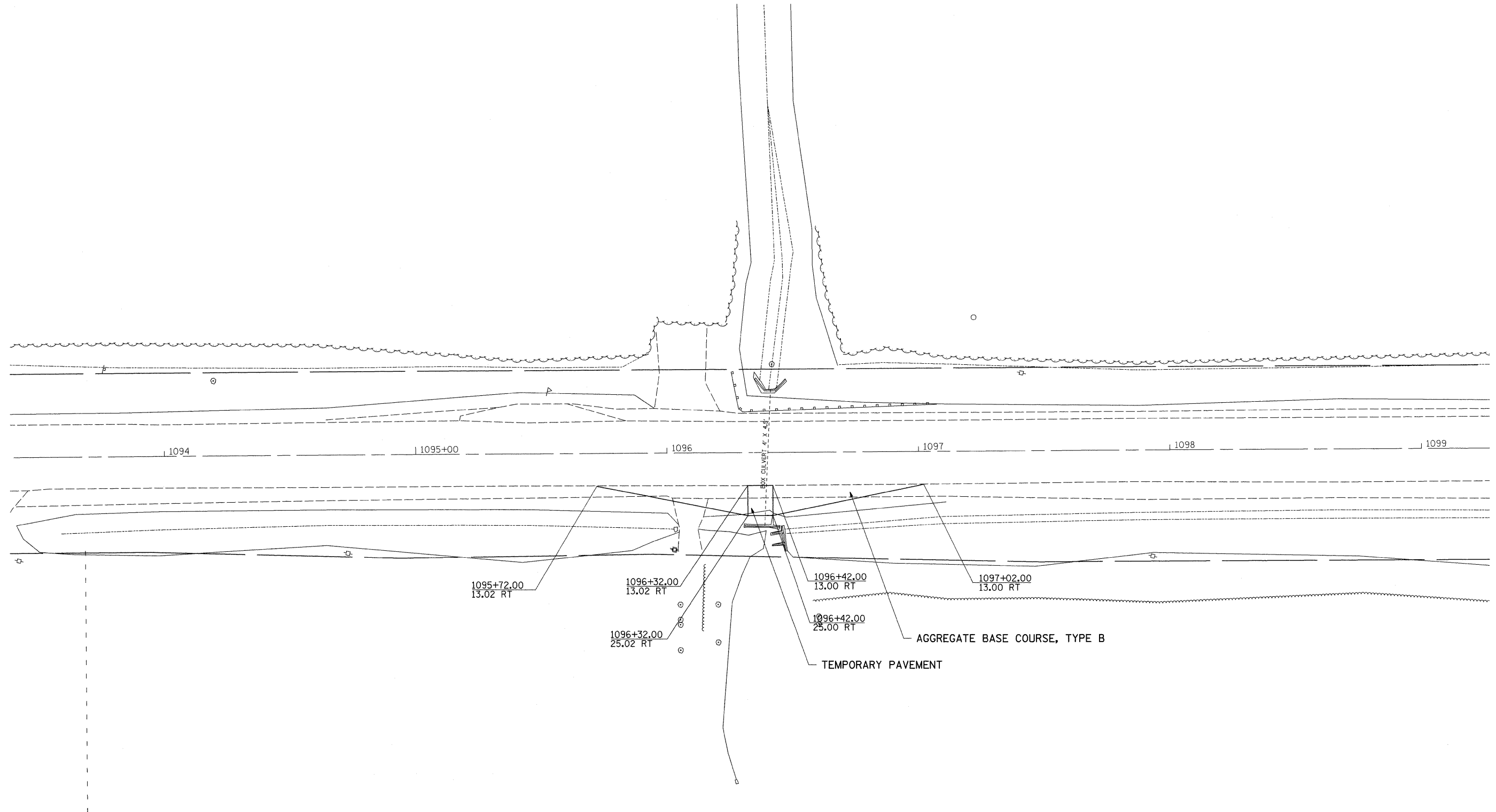
=====  
 Ending chain IL92 description

FILE NAME =	USER NAME = hensonke	DESIGNED -	REVISED -	<b>STATE OF ILLINOIS DEPARTMENT OF TRANSPORTATION</b>	<b>HORIZONTAL &amp; VERTICAL CONTROL</b>	F.A.P. RTE.	SECTION	COUNTY	TOTAL SHEETS	SHEET NO.	
ct:\pw_work\pwsdot\hensonke\dms31385\j08077hvc.dgn		DRAWN -	REVISED -			599	(42MFT)-1	ROCK ISLAND	26	11	
PLOT SCALE = 2500.0000' / IN.		CHECKED -	REVISED -			CONTRACT NO. 64C76					
PLOT DATE = Thu Oct 09 07:39:32 2008		DATE -	REVISED -			FED. ROAD DIST. NO. ILLINOIS FED. AID PROJECT					
				SCALE:		SHEET NO. OF SHEETS		STA. TO STA.			



# STAGE 1

## 48" PIPE CULVERT STA. 1096 + 37

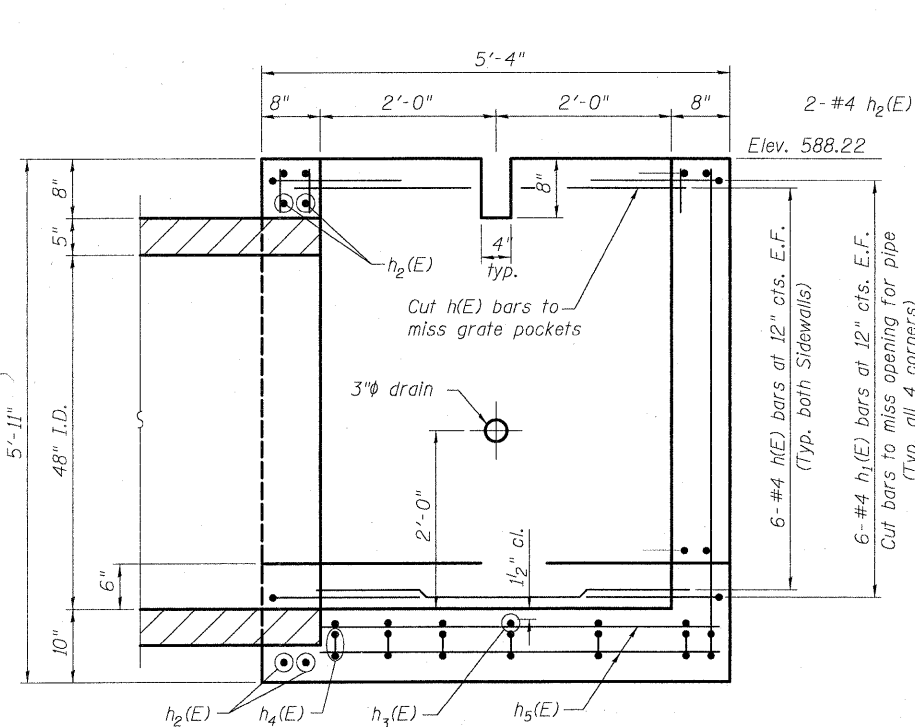


FILE NAME =	USER NAME = hensonke	DESIGNED -	REVISED -	<b>STATE OF ILLINOIS DEPARTMENT OF TRANSPORTATION</b>	<b>STAGING PLANS</b>				F.A.P. RTE.	SECTION	COUNTY	TOTAL SHEETS	SHEET NO.
ct:\pw_work\pw\IDOT\HENSONKE\dms31385\020707-sht-staging.dgn	PLOT SCALE = 20.0000' / IN.	DRAWN -	REVISED -		599	(42MFT)-1	ROCK ISLAND	26	13				
PLOT DATE = Thu Oct 09 07:32:25 2008	DATE -	CHECKED -	REVISED -		CONTRACT NO. 64C76								
					SCALE:	SHEET NO. OF SHEETS	STA. TO STA.	FED. ROAD DIST. NO.	ILLINOIS FED. AID PROJECT				

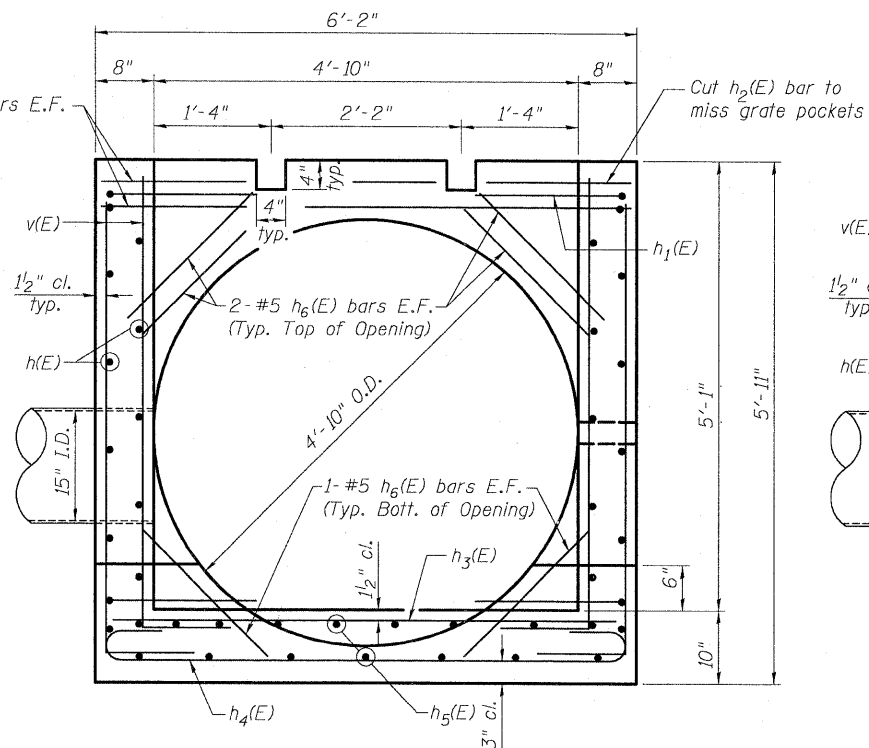
STATE OF ILLINOIS  
DEPARTMENT OF TRANSPORTATION

F.A.P. RTE.	SECTION	COUNTY	TOTAL SHEETS	SHEET NO.
599	(42MFT) T-1	ROCK ISLAND	24	17
STA.	TO STA.			
FED. ROAD DIST. NO. ILLINOIS FED. AID PROJECT				

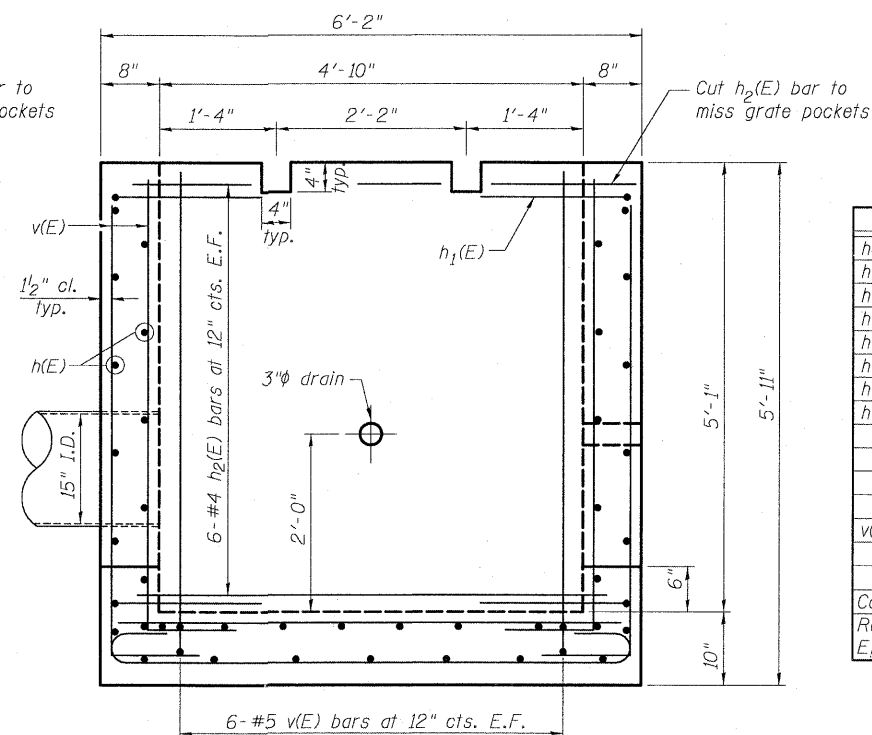
CONTRACT # 64C76



SECTION B-B  
(View of West Wall)



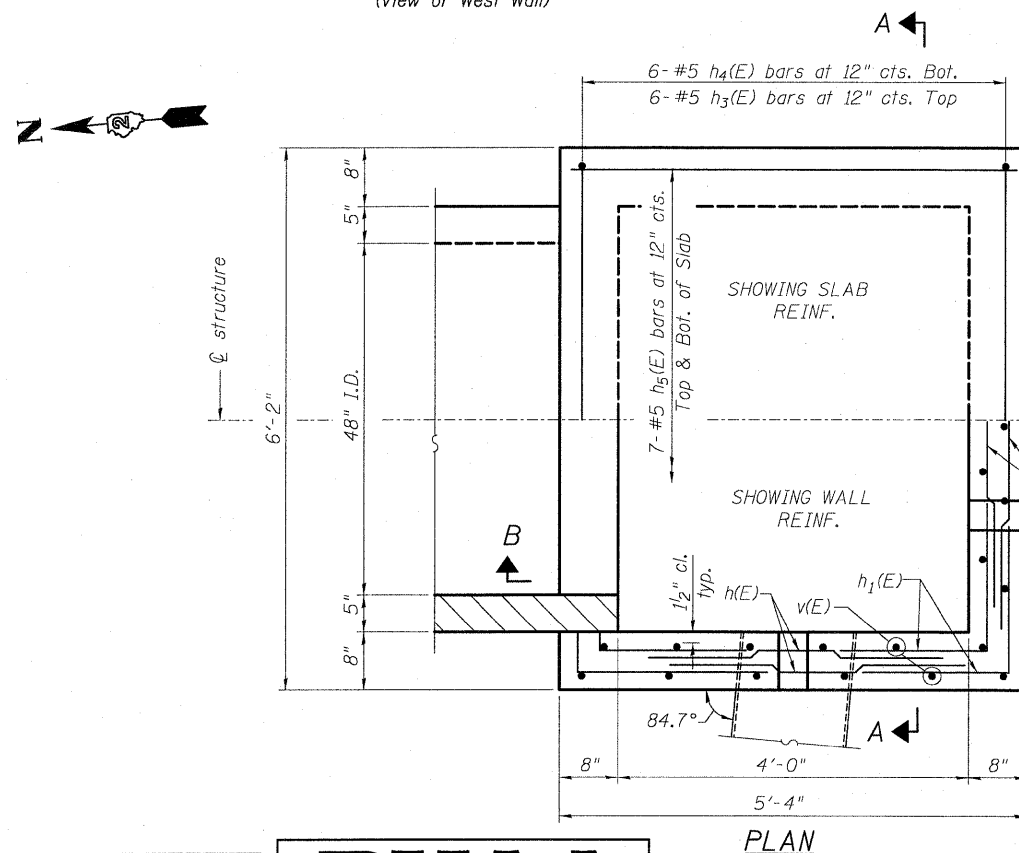
SECTION A-A  
(View of North Wall)



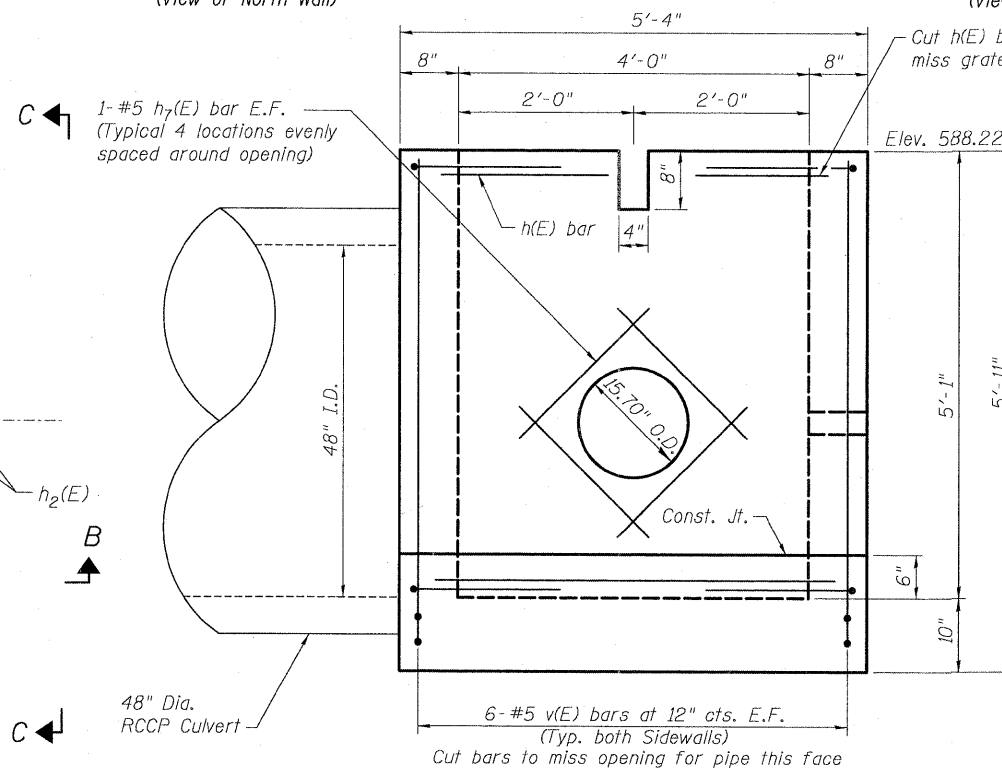
SECTION C-C  
(View of South Wall)

BILL OF MATERIAL  
(For information only)

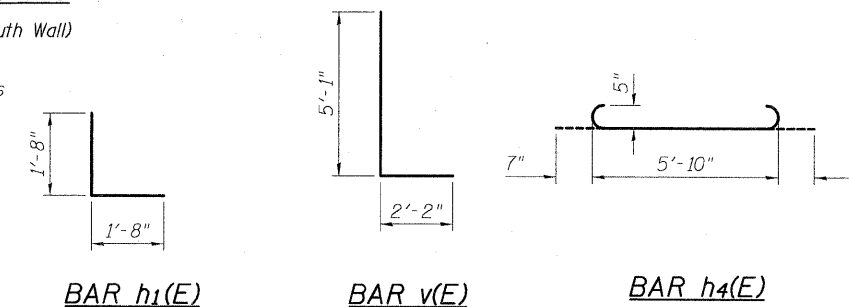
Bar	No.	Size	Length	Shape
h(E)	24	#4	5'-1"	—
h1(E)	48	#4	3'-4"	—
h2(E)	18	#4	5'-11"	—
h3(E)	6	#5	5'-11"	—
h4(E)	6	#5	7'-0"	—
h5(E)	14	#5	5'-1"	—
h6(E)	12	#5	3'-1"	—
h7(E)	8	#5	1'-10"	—
v(E)	36	#5	7'-3"	—
Concrete Structures		Cu. Yd.	3.1	
Reinforcement Bars, Epoxy Coated		Pound	730	



PLAN



ELEVATION  
(View of East Wall)



GENERAL NOTES

Reinforcement bars designated (E) shall be epoxy coated. Reinforcement bars shall conform to the requirements of ASTM A706 Gr. 60 (IL Modified) See Special Provisions. The contractor shall be responsible for diverting the water flow from the construction area using a method meeting the approval of the Engineer. Cost included with "Drop Box No. 1". Drain holes shall be constructed in accordance with section 503.11. For details of galvanized steel pipe grate see sheet 15. Concrete Structures shall be according to the applicable portions of Articles 503 and 540. Reinforcement Bars, Epoxy Coated shall be according to the applicable portions of Article 508. This work will be paid for at the unit cost per Each for DROP BOX NO. 1

DROP BOX NO. 1  
REINFORCEMENT DETAILS  
FAP ROUTE 599 (IL ROUTE 92)  
SECTION (42MFT) T-1  
ROCK ISLAND COUNTY

DESIGNED	AEU
CHECKED	AEU/DS
DRAWN	AEU/DS
CHECKED	AEU/DS

**RHA&A**  
Robert H. Anderson & Associates, Inc.  
Consulting Engineers  
Illinois Department of Financial and Professional Regulation  
Professional Design Firm  
License No. 184.005281

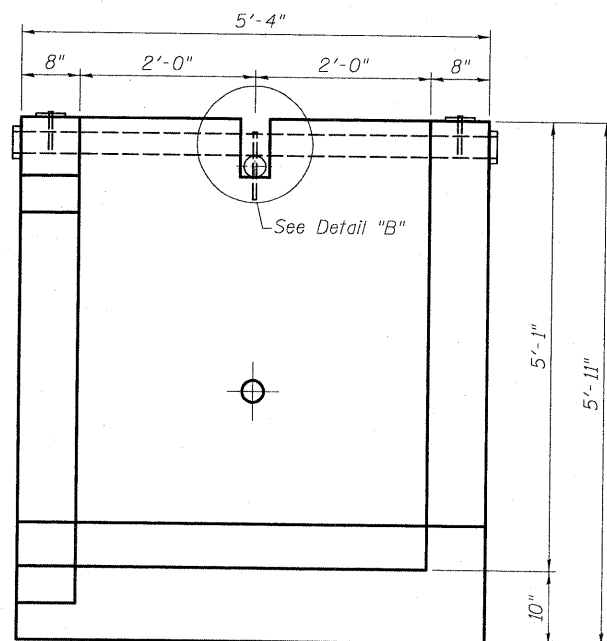


Andrew E. Underwager  
Date: 10/3/2008  
License Expires: 11/30/2008

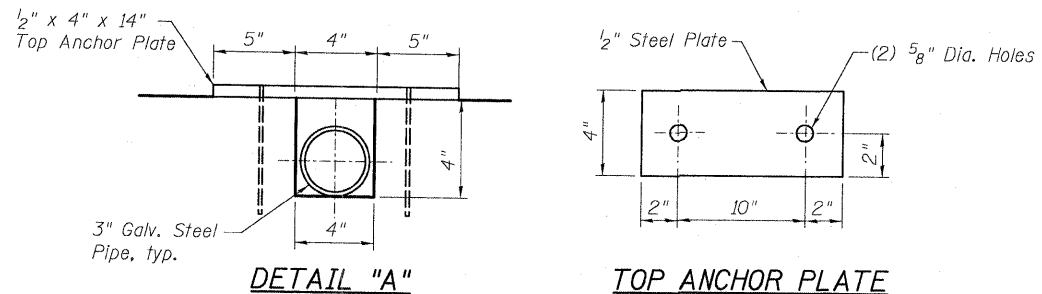
STATE OF ILLINOIS  
DEPARTMENT OF TRANSPORTATION

F.A.P. RTE.	SECTION	COUNTY	TOTAL SHEETS	SHEET NO.
599	(42MFT) T-1	ROCK ISLAND	26	15
STA.		TO STA.		
FED. ROAD DIST. NO.		ILLINOIS FED. AID PROJECT		

CONTRACT # 64C76

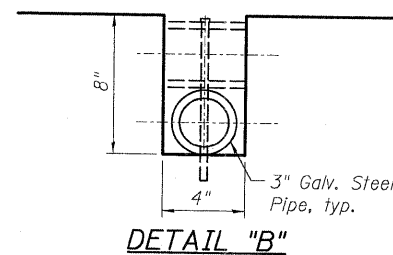


SECTION B-B



DETAIL "A"

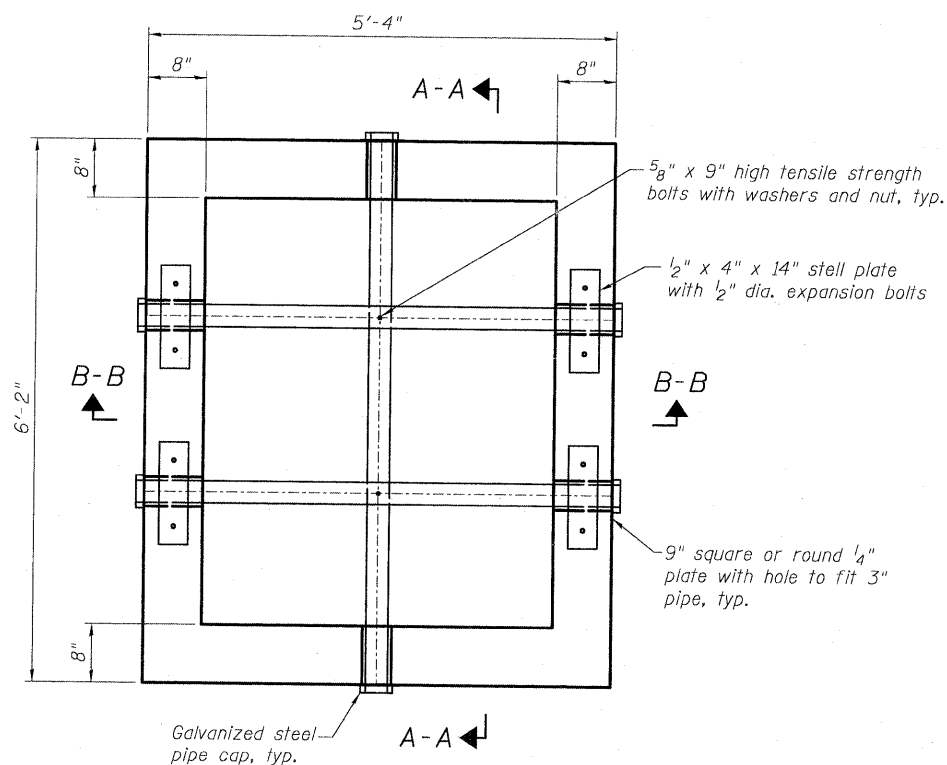
TOP ANCHOR PLATE



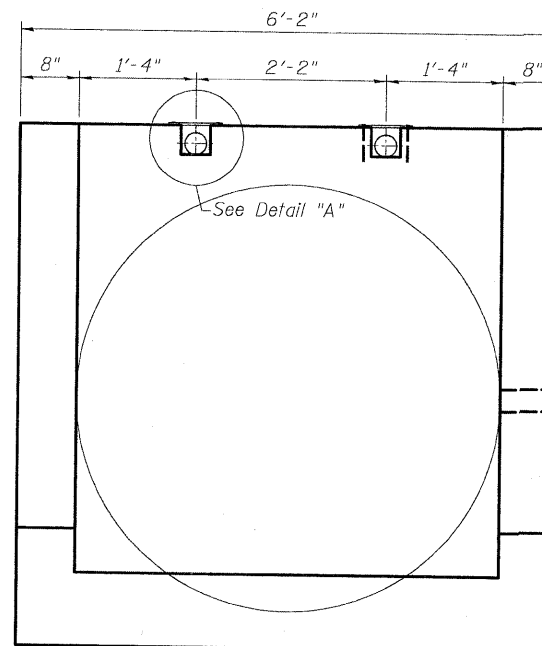
DETAIL "B"

**BILL OF MATERIAL**  
(For information only)

Description	Unit	Qty.
3" Galvanized Steel Pipe	Foot	2 at 5'-8"
3" Galvanized Pipe Caps	Foot	1 at 6'-6"
3" Galvanized Pipe Caps	Each	6
1/4" Galv. Steel Plate (9" Nominal)	Each	6
1/2" x 4" x 14" Galv. Steel Plate	Each	4
5/8" x 9" Galv. Steel Bolts	Each	2
Expansion Bolts 1/2"	Each	8



PLAN



SECTION A-A

**GENERAL NOTES**

The contract unit price "each" for DROP BOX NO. 1 shall include the Expansion Bolts, Galvanized Pipe, Bolts, Nuts, Washers and steel plates.

Steel Plates shall conform to AASHTO M-270 Grade 36 and shall be galvanized conforming to AASHTO M-111.

Bolts, nuts and washers shall be in accordance with Article 1006.08 (a) of the Standard Specifications and shall be galvanized.

Contractor to field verify galvanized pipe length.

DESIGNED	AEU
CHECKED	AEU/DS
DRAWN	AEU/DS
CHECKED	AEU/DS

**RHA&A**  
Robert H. Anderson & Associates, Inc.  
Consulting Engineers  
Illinois Department of Financial and Professional Regulation  
Professional Design Firm  
License No. 184.005281

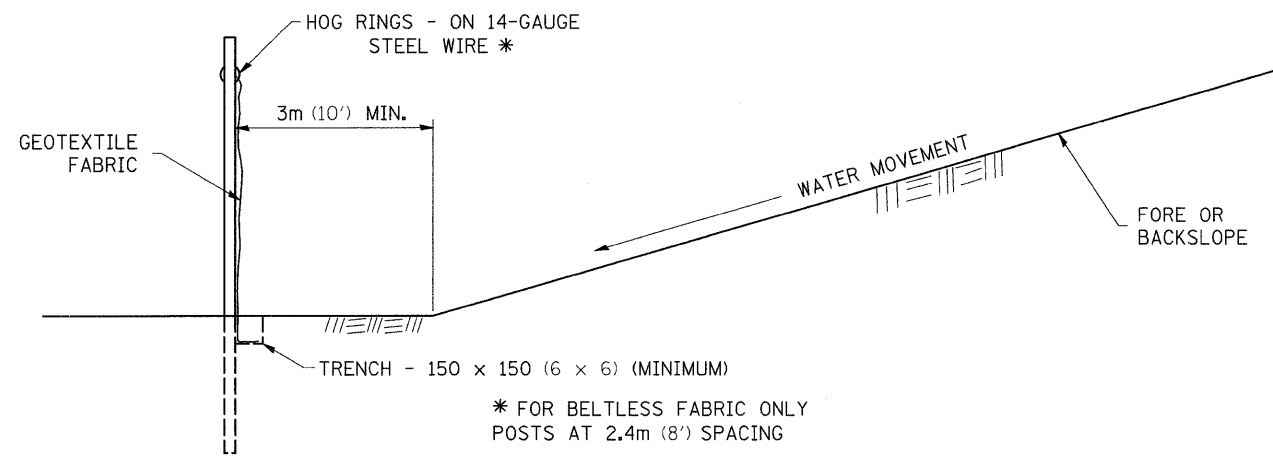
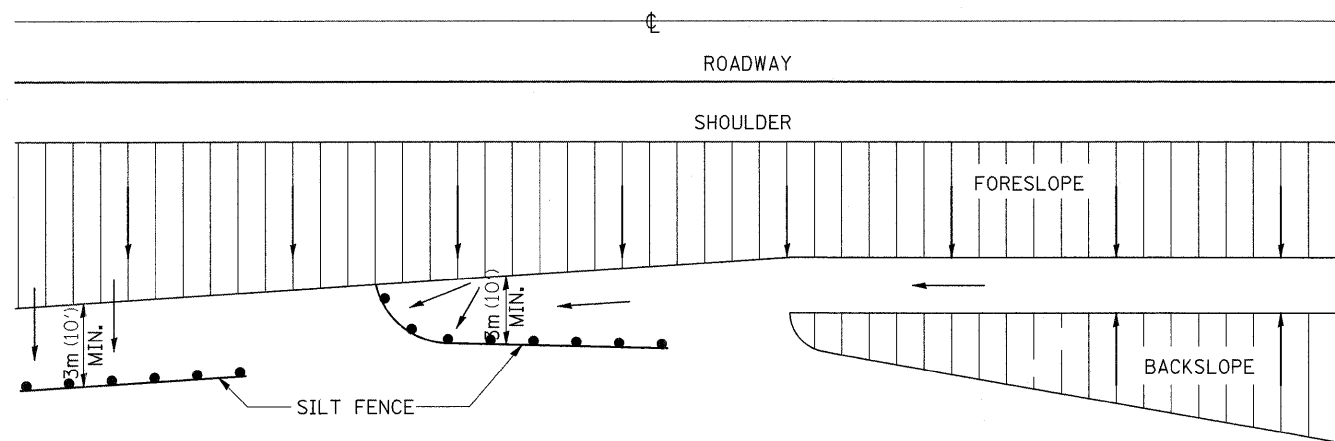
**DROP BOX NO. 1**  
**GRATE DETAILS**  
**FAP ROUTE 599 (IL ROUTE 92)**  
**SECTION (42MFT) T-1**  
**ROCK ISLAND COUNTY**







# EROSION CONTROL DETAILS FOR SILT FENCE

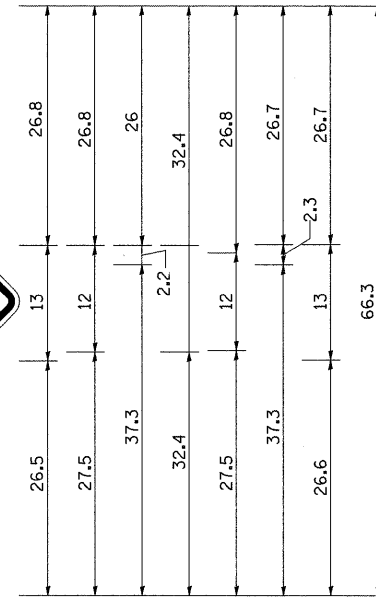
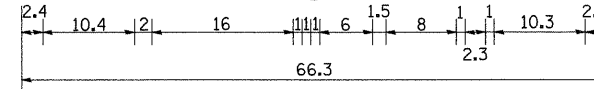
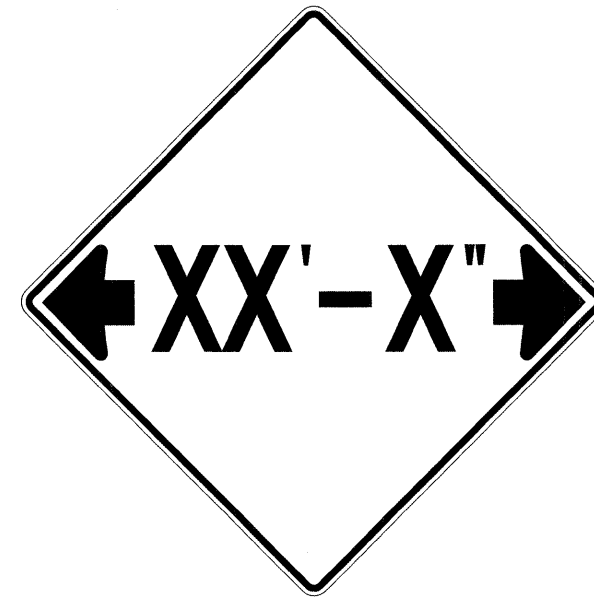


DETAILS OF SILT FENCE

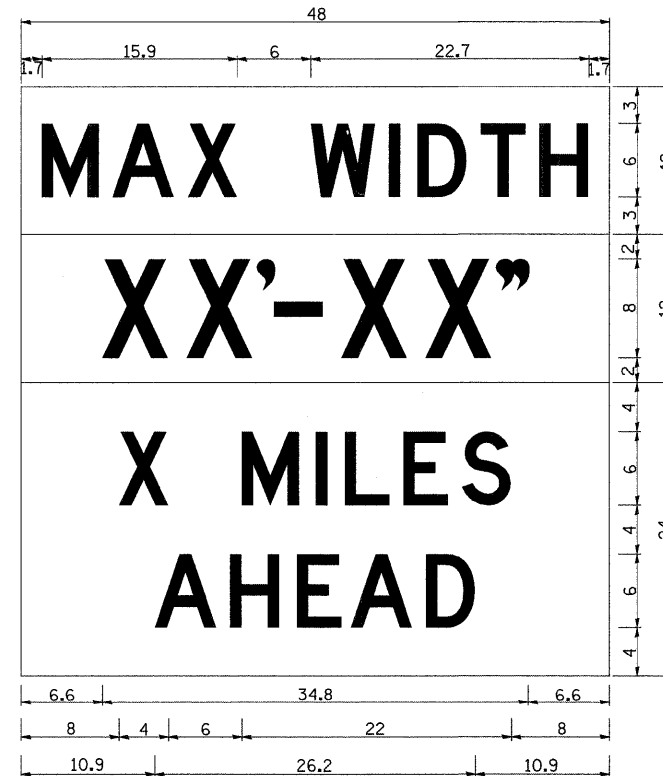
ALL DIMENSIONS ARE IN MILLIMETERS (INCHES) UNLESS OTHERWISE NOTED.

REVISED - 10-22-01

# INFORMATIONAL WARNING SIGN (FOR NARROW TRAVEL LANES)



NOTES  
 W12-2 - Horizontal Clearance Sign  
 48.0" across sides, 1.9" Radius,  
 0.8" Border, 0.5" Indent, Black on  
 Orange; Standard Arrow Custom  
 10.4" X 8.1" 180° Black 11 Inch  
 D Series Lettering; Standard Arrow  
 Custom 10.4" X 8.1" 0°



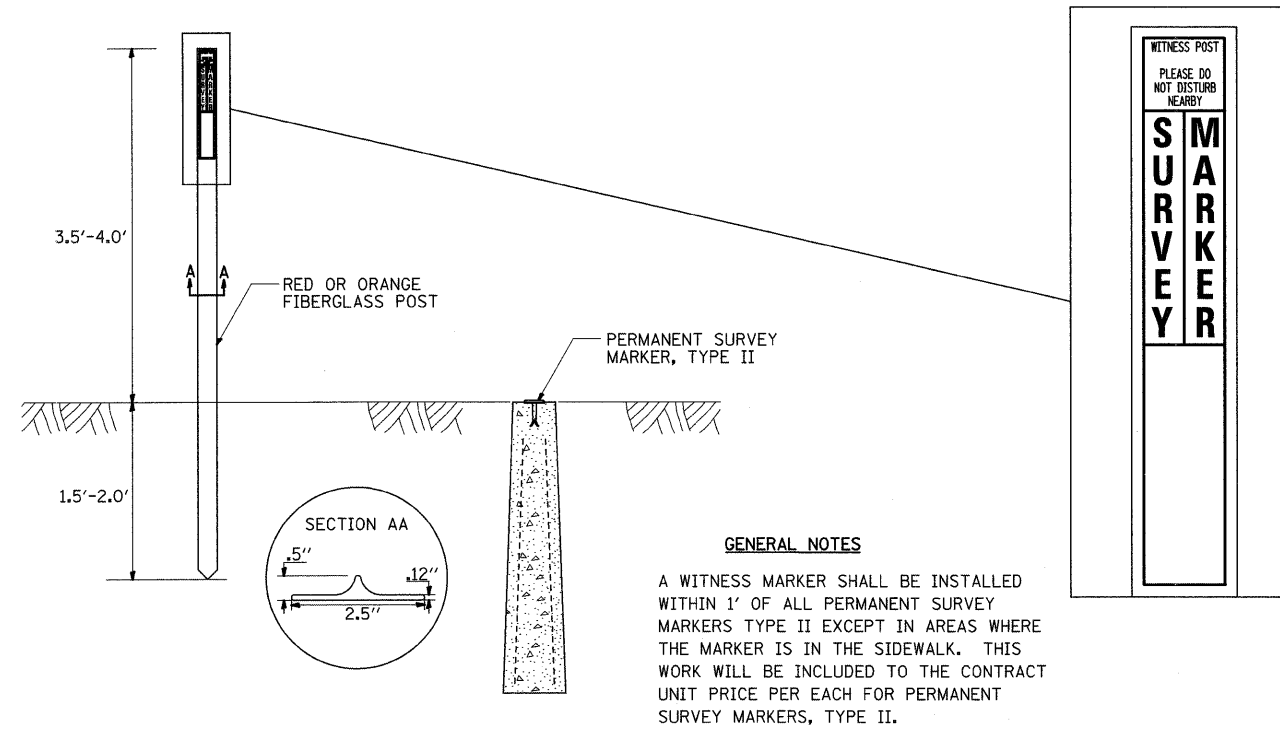
W12-I103 (Width is 8D);  
 No border, Black on White;  
 [MAX WIDTH] D;  
  
 No border, Black on Orange;  
 [XX'-XX''] D;  
  
 No border, Black on White;  
 [X MILES] D; [AHEAD] D;

All work to furnish and install these signs shall be included in the cost of the Traffic Control Standards and shall not be paid for separately.

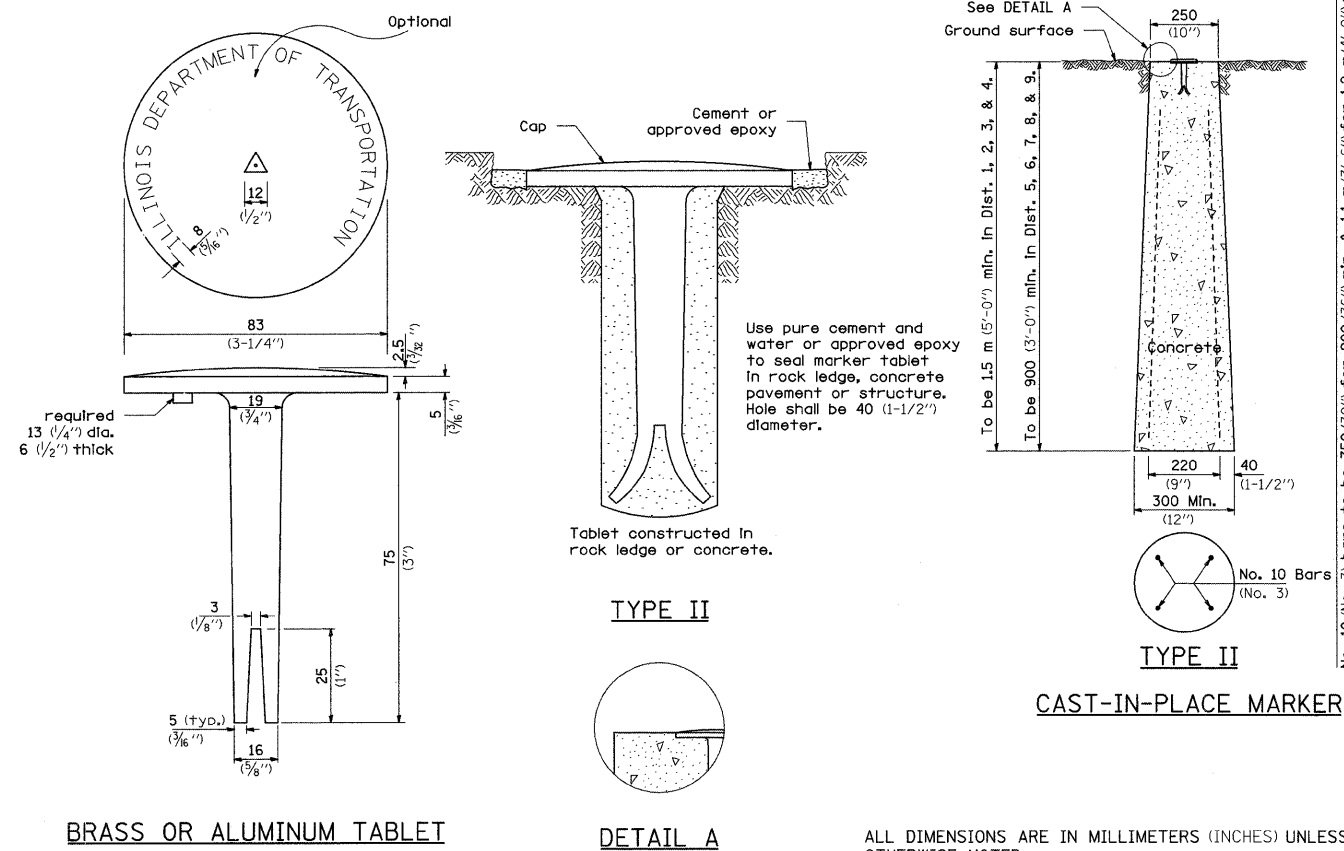
ALL DIMENSIONS ARE IN INCHES UNLESS OTHERWISE NOTED.

REVISED - 1-9-08	REGION 2 / DISTRICT 2 STANDARD				F.A.P. RTE.	SECTION	COUNTY	TOTAL SHEETS	SHEET NO.
REVISED -					599	(42MFT)T-1	ROCK ISLAND	26	18
REVISED -					CONTRACT NO. 64C76				
REVISED -	SCALE: 50.0000' / IN SHEET NO. OF SHEETS STA. TO STA.				FED. ROAD DIST. NO. ILLINOIS FED. AID PROJECT				

# WITNESS MARKER FOR PERMANENT SURVEY MARKERS, TYPE II



# PERMANENT SURVEY MARKERS, TYPE II



BRASS OR ALUMINUM TABLET

DETAIL A

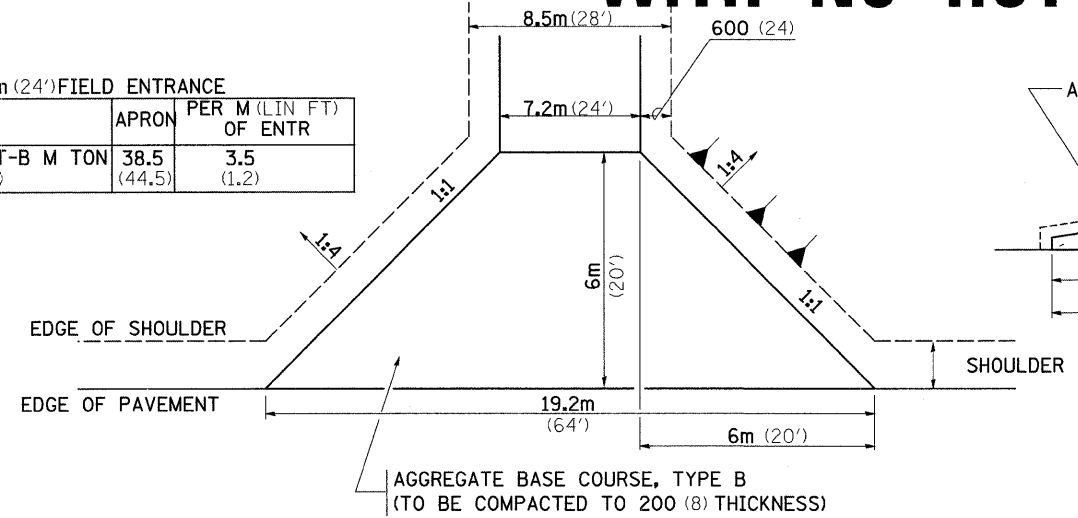
ALL DIMENSIONS ARE IN MILLIMETERS (INCHES) UNLESS OTHERWISE NOTED.

REVISED - 6-26-06

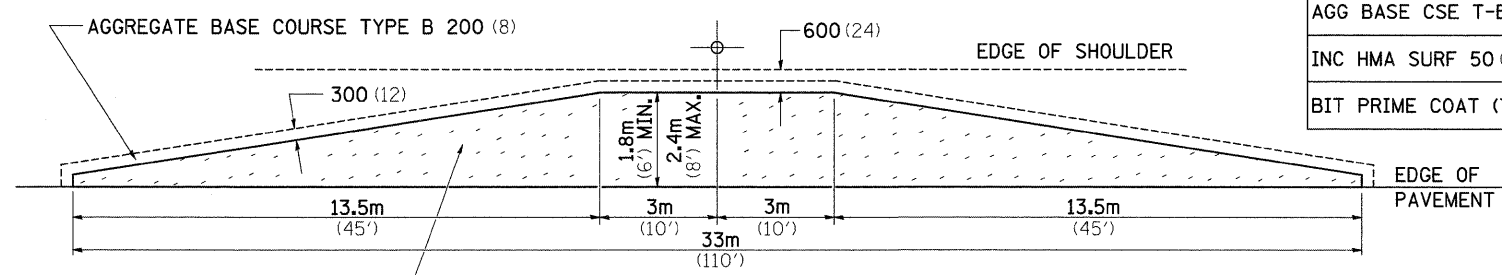
REVISED -	REGION 2 / DISTRICT 2 STANDARD	F.A.P. RTE.	SECTION	COUNTY	TOTAL SHEETS	SHEET NO.	
REVISED -		599	(42MFT)T-1	ROCK ISLAND	26	19	
REVISED -		CONTRACT NO. 64C76					
REVISED -		SCALE: 50.0000' = 1" IN	SHEET NO.	OF	SHEETS	STA.	TO STA.
REVISED -		FED. ROAD DIST. NO. ILLINOIS FED. AID PROJECT					

# ENTRANCES, SIDE ROADS, AND MAILBOX RETURNS WITH NO HOT-MIX ASPHALT SHOULDERS

7.2m (24') FIELD ENTRANCE		
	APRON	PER M (LIN FT) OF ENTR
AGG BASE CSE T-B M (TON)	38.5 (44.5)	3.5 (1.2)



**FIELD ENTRANCE**



ON ALL ENTRANCES  
AGGREGATE BASE COURSE TYPE B 200 (8)  
INCIDENTAL HOT-MIX ASPHALT SURFACING 50 (2)

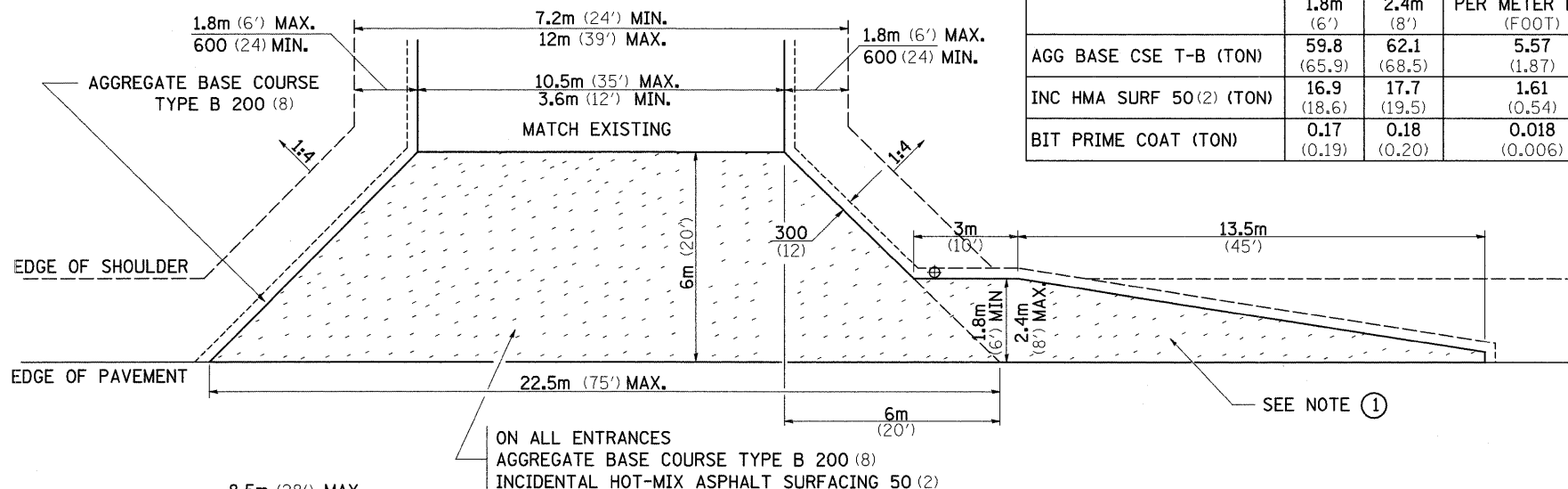
**MAILBOX TURNOUT**

	1.8m (6')	2.4m (8')
AGG BASE CSE T-B (TON)	22.2 (24.5)	28.2 (31.1)
INC HMA SURF 50 (2) (TON)	5.3 (5.8)	7.1 (7.8)
BIT PRIME COAT (TON)	0.05 (0.06)	0.07 (0.08)

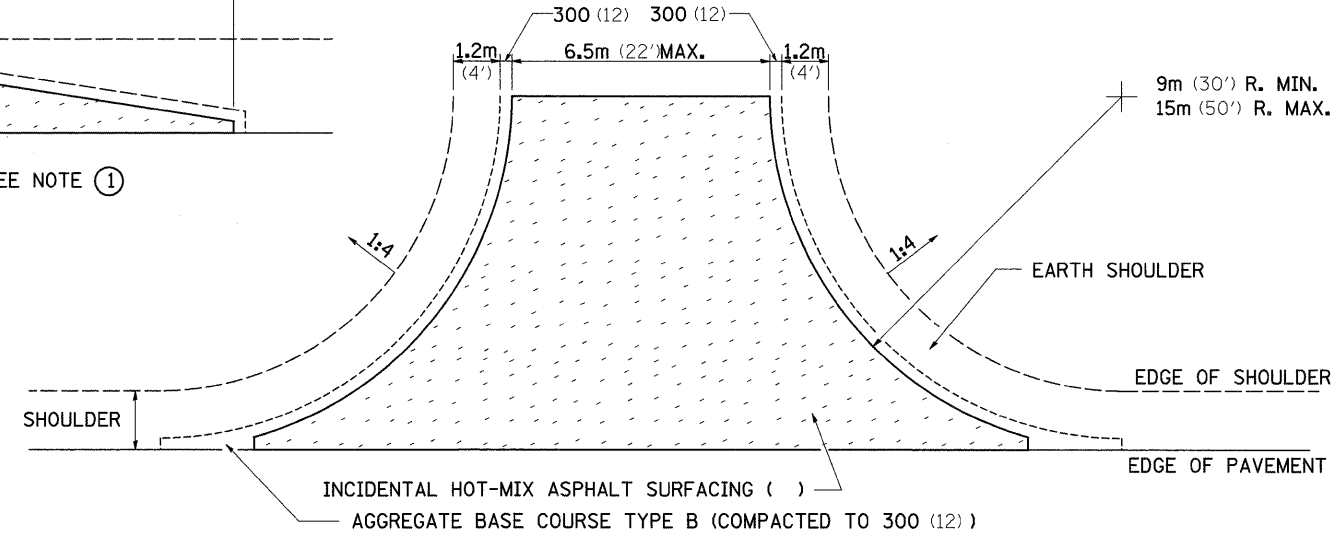
**NOTE**

- ① TURNOUTS ARE TO BE CONSTRUCTED ON THE APPROACH SIDE OF ALL PE & CE REGARDLESS IF A MAILBOX IS PRESENT.
- ② ALL PE & CE ARE TO BE SURFACED TO RIGHT OF WAY LINE. AREA BEHIND RIGHT OF WAY SHALL MATCH EXISTING SURFACE.
- ③ FE ARE TO BE AGGREGATE TO RIGHT OF WAY OR TOUCH DOWN, WHICH EVER IS GREATEST.
- ④ QUANTITIES ARE CALCULATED WITH 1' BITUMINOUS SHOULDER IN PLACE. AGGREGATE QUANTITIES SHOWN ARE FOR NEW CONSTRUCTION.
- ⑤ EXCAVATION REQUIRED FOR PLACEMENT OF AGGREGATE BASE COURSE SHALL BE CONSIDERED INCLUDED TO THE AGGREGATE BASE COURSE.
- ⑥ ALL DIMENSIONS ARE IN MILLIMETERS (INCHES) UNLESS OTHERWISE NOTED.

10.5m (35') COMMERCIAL ENTRANCE			
	1.8m (6')	2.4m (8')	PER METER ENTR (FOOT)
AGG BASE CSE T-B (TON)	59.8 (65.9)	62.1 (68.5)	5.57 (1.87)
INC HMA SURF 50 (2) (TON)	16.9 (18.6)	17.7 (19.5)	1.61 (0.54)
BIT PRIME COAT (TON)	0.17 (0.19)	0.18 (0.20)	0.018 (0.006)



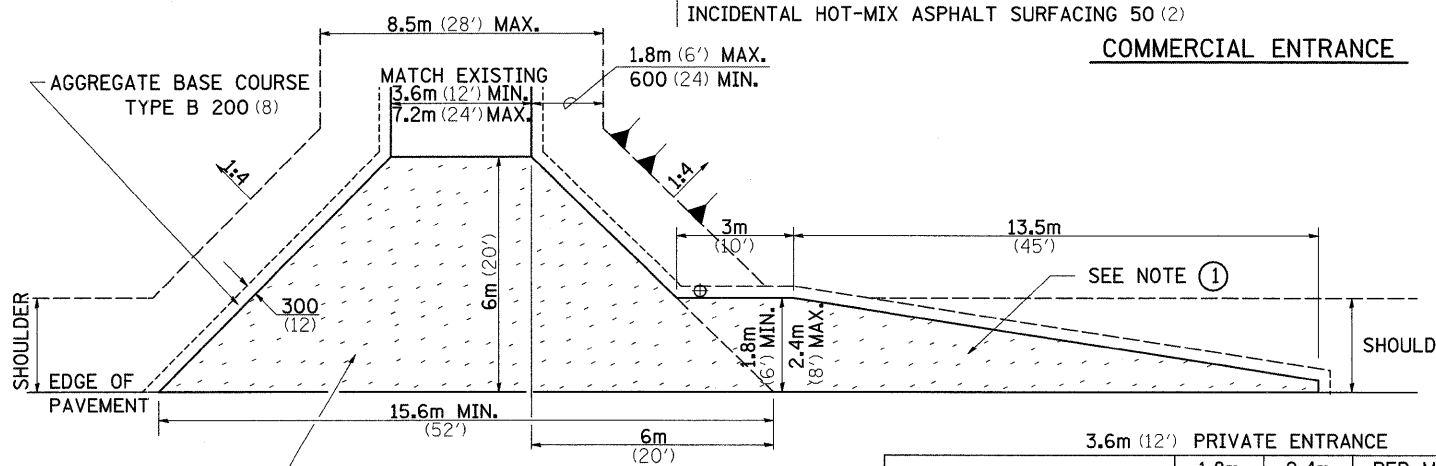
**COMMERCIAL ENTRANCE**



**SIDE ROAD RETURN**

	9m RADIUS (30')			12m RADIUS (40')			15m RADIUS (50')		
	5.5m (18')	6m (20')	6.5m (22')	5.5m (18')	6m (20')	6.5m (22')	5.5m (18')	6m (20')	6.5m (22')
AGG BASE CSE T-B (TON)	70.3 (77.5)	74.4 (82.0)	78.6 (86.6)	105.5 (116.3)	111.0 (122.4)	116.6 (128.5)	146.6 (161.6)	153.5 (169.2)	116.6 (176.8)
INC HMA SURF AT 25 (1) (TON)	5.3 (5.8)	5.5 (6.1)	5.9 (6.5)	8.0 (8.8)	8.4 (9.3)	9.0 (9.9)	11.1 (12.2)	11.7 (12.9)	9.0 (13.5)
BIT PRIME COAT (TON)	0.14 (0.15)	0.15 (0.16)	0.15 (0.17)	0.20 (0.22)	0.22 (0.24)	0.23 (0.25)	0.30 (0.33)	0.32 (0.35)	0.32 (0.37)

NOTE: USE 50 (2) INC. HMA SURF. ON EXISTING RETURNS



**PRIVATE ENTRANCE**

3.6m (12') PRIVATE ENTRANCE			
	1.8m (6')	2.4m (8')	PER METER ENTR (FOOT)
AGG BASE CSE T-B (TON)	39.7 (43.8)	42.0 (46.3)	2.11 (0.71)
INC HMA SURF 50 (2) (TON)	10.7 (11.8)	11.5 (12.7)	0.57 (0.19)
BIT PRIME COAT (TON)	0.11 (0.12)	0.18 (0.13)	0.006 (0.002)

ON ALL ENTRANCES  
AGGREGATE BASE COURSE TYPE B  
(TO BE COMPACTED TO 200 (8) THICKNESS)  
INCIDENTAL HOT-MIX ASPHALT SURFACING 50 (2)

FILE NAME =	USER NAME = hensonke	DESIGNED -	REVISED - 1-15-08
ct:\pw_work\pwsdot\hensonke\dms31385\000707sp1.dgn		DRAWN -	REVISED -
PLOT SCALE = 50.0000 "/td> <td></td> <td>CHECKED -</td> <td>REVISED -</td>		CHECKED -	REVISED -
PLOT DATE = Thu Oct 09 07:36:08 2008		DATE -	REVISED -

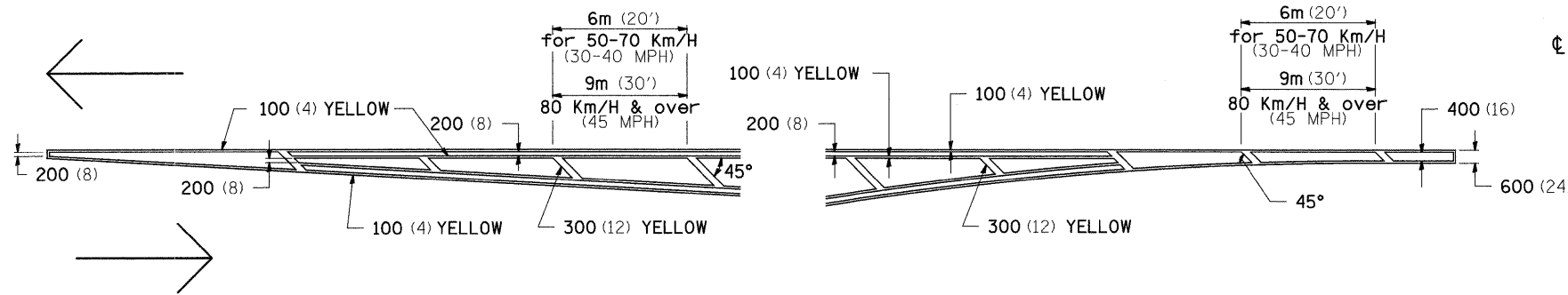
**STATE OF ILLINOIS  
DEPARTMENT OF TRANSPORTATION**

**REGION 2 / DISTRICT 2 STANDARD**

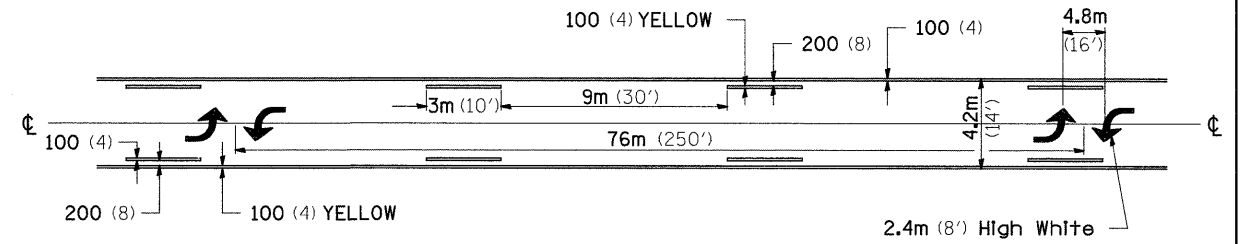
F.A.P. RTE.	SECTION	COUNTY	TOTAL SHEETS	SHEET NO.
599	(42MFT)-1	ROCK ISLAND	26	20
FED. ROAD DIST. NO.	ILLINOIS FED. AID PROJECT	CONTRACT NO. 64C76		

# TYPICAL PAVEMENT MARKINGS

## TYPICAL PAVEMENT MARKING FOR FLUSH MEDIAN AT LEFT TURN LANE

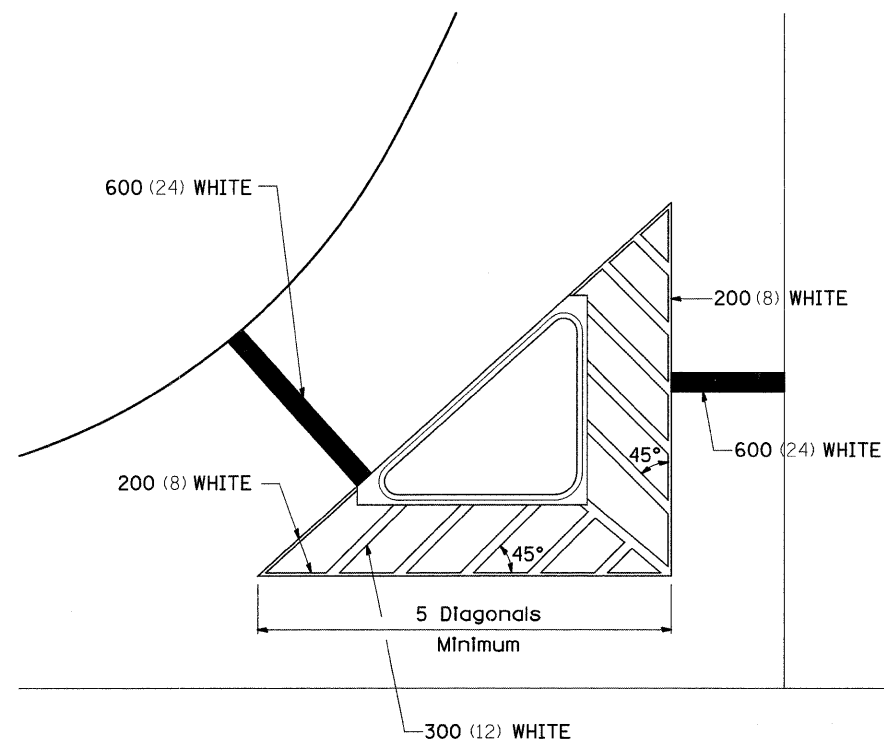


## MEDIAN PAVEMENT MARKING

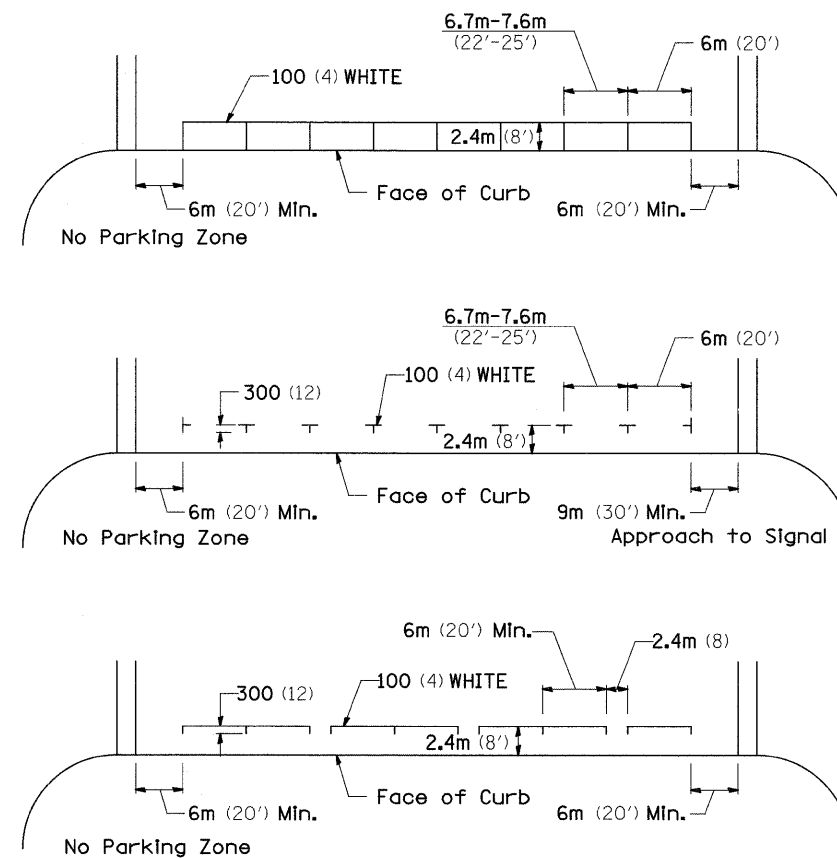


•• ALL DIMENSIONS ARE IN MILLIMETERS (INCHES) UNLESS OTHERWISE NOTED.

## TYPICAL ISLAND OFFSET SHOULDER WIDTH

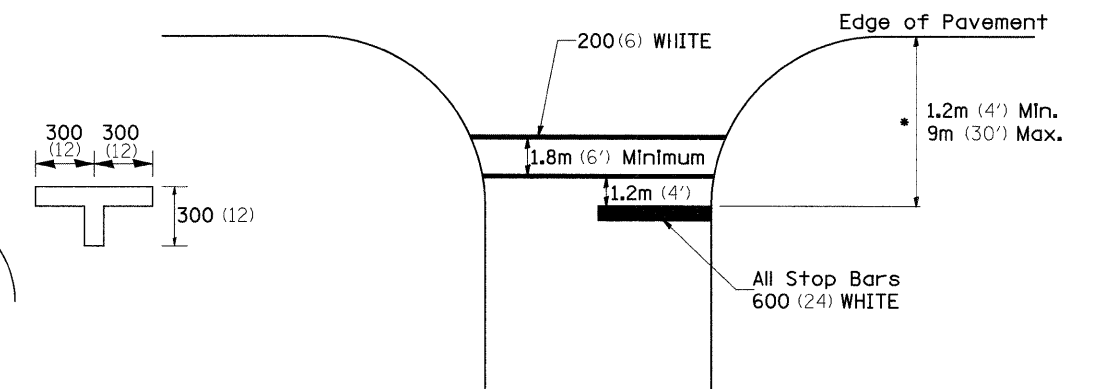


## TYPICAL PARKING SPACING



## STANDARD CROSSWALK MARKING

See Schedules for Locations

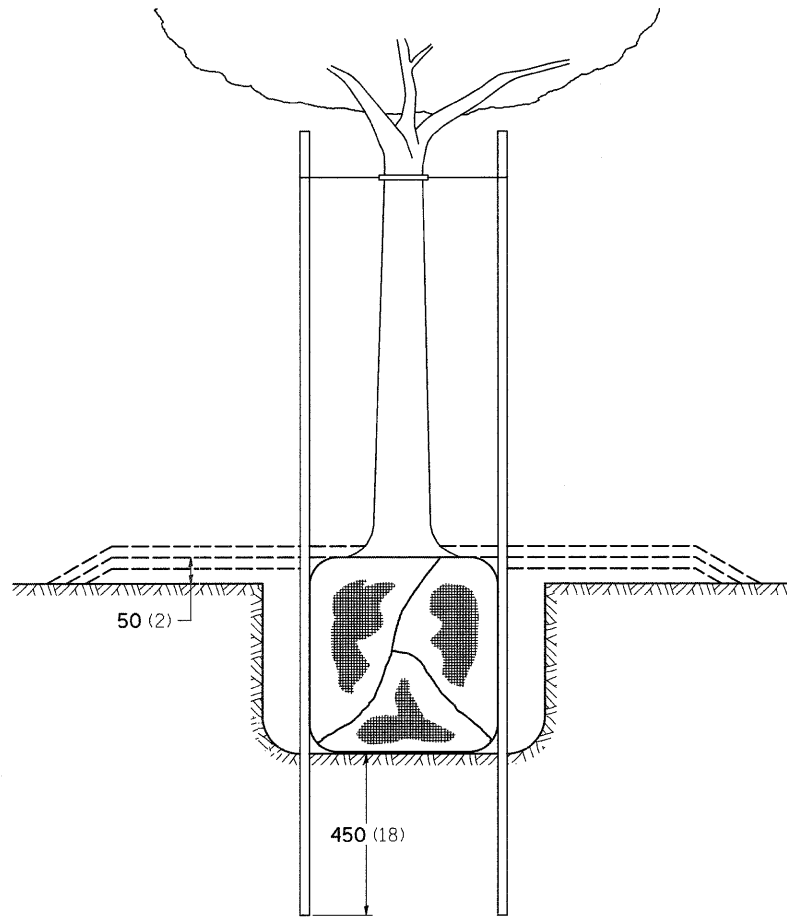


• Distance to the nearest edge of the intersecting roadway in the absence of a marked crosswalk.

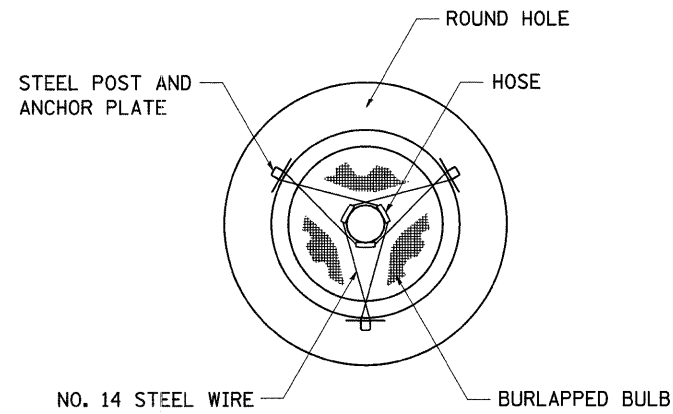
FILE NAME =	USER NAME = hensonke	DESIGNED -	REVISED - 1-11-08	<b>STATE OF ILLINOIS DEPARTMENT OF TRANSPORTATION</b>	<b>REGION 2 / DISTRICT 2 STANDARD</b>	F.A.P. RTE.	SECTION	COUNTY	TOTAL SHEETS	SHEET NO.	
ct:\pwork\pwork\hensonke\dms31385\090707.plt.dgn		DRAWN -	REVISED -			599	(42MFT)-1	ROCK ISLAND	26	21	
		CHECKED -	REVISED -			CONTRACT NO. 64C76					
		DATE -	REVISED -			FED. ROAD DIST. NO. ILLINOIS FED. AID PROJECT					



# DETAILS OF PLANTING AND BRACING TREES

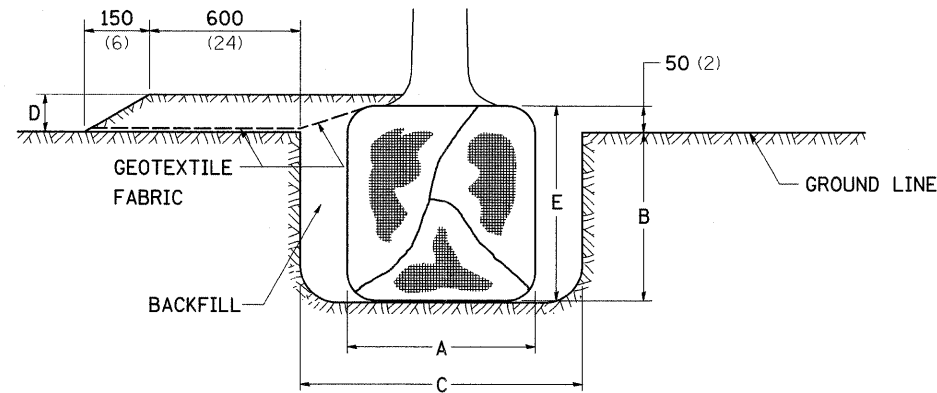


TREES SMALLER THAN 115 (4 1/2) IN DIAMETER

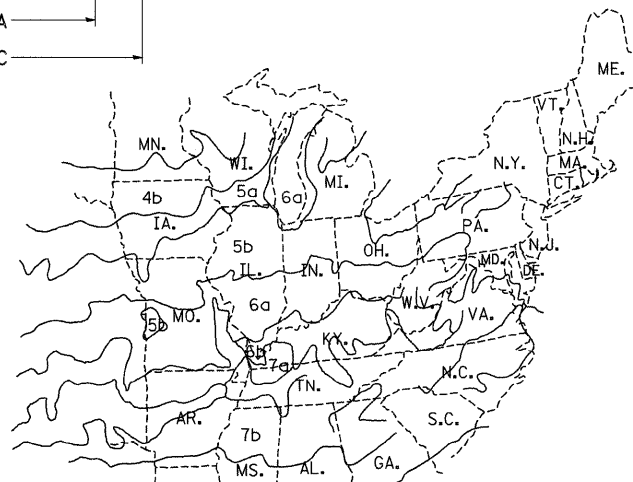


SMALL	A	B	C	D	E	F
TREE SIZE	DIAMETER OF BALL OR ROOT SYS.	DEPTH OF HOLE EXCAVATION	WIDTH OF HOLE EXCAVATION	THICKNESS OF MULCH COVER	DEPTH OF BALL OR ROOT SYS.	VOLUME OF MULCH COVER m <sup>3</sup> (CU. YDS.)
1.5-1.8m (5'-6')	400 (16)	250 (10)	750 (30)	100 (4)	300 (12)	0.41 (0.54)
1.5-1.8m (5'-6') BB	400 (16)	250 (10)	750 (30)	100 (4)	300 (12)	0.41 (0.54)
1.8-2.0m (6'-7') BB	450 (18)	300 (12)	750 (30)	100 (4)	350 (14)	0.41 (0.54)
2.0-2.4m (7'-8') BB	500 (20)	275 (11)	750 (30)	100 (4)	325 (13)	0.41 (0.54)
2.4-3.0m (8'-10') BB	600 (24)	350 (14)	900 (36)	100 (4)	400 (16)	0.47 (0.61)
3.0-3.6m (10'-12') BB	650 (26)	375 (15)	900 (36)	100 (4)	425 (17)	0.47 (0.61)

LARGE	A	B	C	D	E	F
TREE SIZE	DIAMETER OF BALL OR ROOT SYS.	DEPTH OF HOLE EXCAVATION	WIDTH OF HOLE EXCAVATION	THICKNESS OF MULCH COVER	DEPTH OF BALL OR ROOT SYS.	VOLUME OF MULCH COVER m <sup>3</sup> (CU. YDS.)
0-50 (0-2)	500 (20)	275 (11)	900 (36)	100 (4)	325 (13)	0.47 (0.61)
50-65 (2-2 1/2) BB	600 (24)	350 (14)	1200 (48)	100 (4)	400 (16)	0.60 (0.78)
65-75 (2 1/2-3) BB	700 (28)	425 (17)	1200 (48)	100 (4)	475 (19)	0.60 (0.78)
75-90 (3-3 1/2) BB	800 (32)	425 (17)	1500 (60)	100 (4)	475 (19)	0.73 (0.96)
90-100 (3 1/2-4) BB	900 (36)	500 (20)	1500 (60)	100 (4)	550 (22)	0.73 (0.96)
100-115 (4-4 1/2) BB	1000 (40)	550 (22)	1800 (72)	100 (4)	600 (24)	0.89 (1.16)
115-125 (4 1/2-5) BB	1100 (44)	600 (24)	1800 (72)	100 (4)	650 (26)	0.89 (1.16)
125-140 (5-5 1/2) BB	1200 (48)	675 (27)	2100 (84)	100 (4)	725 (29)	1.06 (1.38)

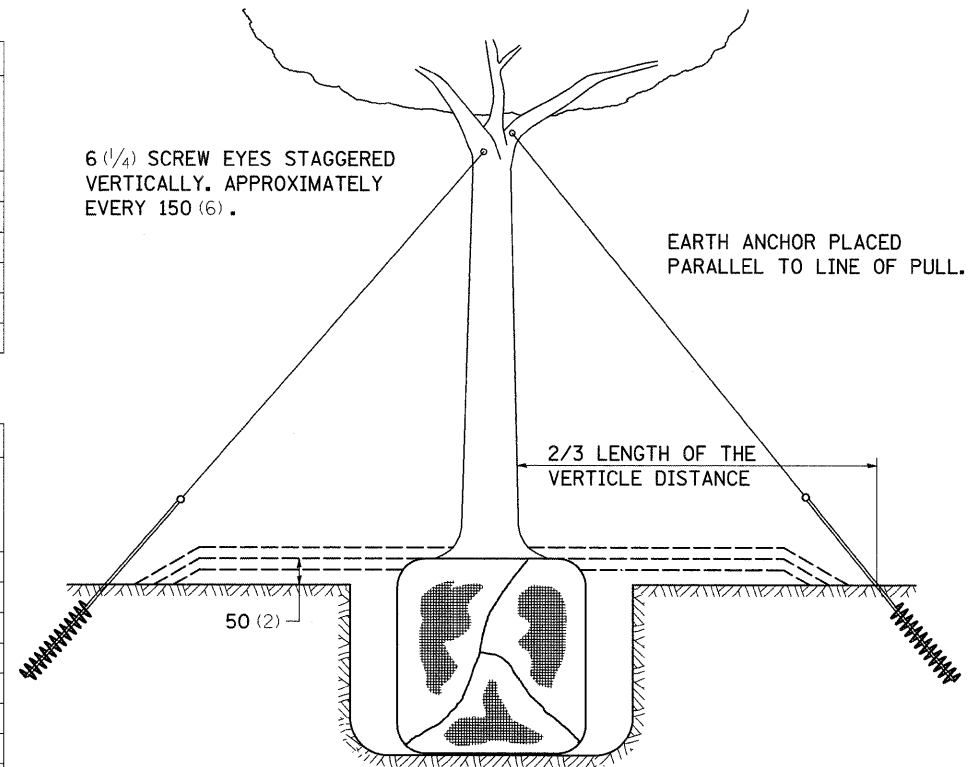


TREES OVER 115 (4 1/2) IN DIAMETER



PLANT HARDINESS ZONE MAP

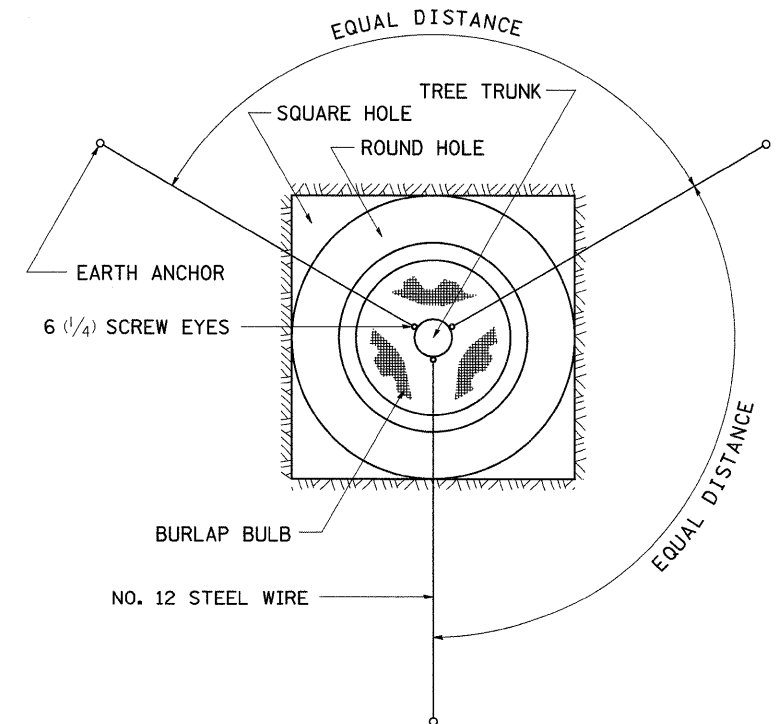
U.S. DEPARTMENT OF AGRICULTURE  
AGRICULTURAL RESEARCH SERVICE  
PUBLICATION NO. 814



6 (1/4) SCREW EYES STAGGERED VERTICALLY. APPROXIMATELY EVERY 150 (6).

EARTH ANCHOR PLACED PARALLEL TO LINE OF PULL.

2/3 LENGTH OF THE VERTICAL DISTANCE



ALL DIMENSIONS ARE IN MILLIMETERS (INCHES) UNLESS OTHERWISE NOTED.

FILE NAME =	USER NAME = hensonke	DESIGNED -	REVISED - 10-15-04
ct:\pwwork\pwwork\hensonke\dms31385\d0077spl.dgn		DRAWN -	REVISED -
		CHECKED -	REVISED -
		DATE -	REVISED -

STATE OF ILLINOIS  
DEPARTMENT OF TRANSPORTATION

REGION 2 / DISTRICT 2 STANDARD

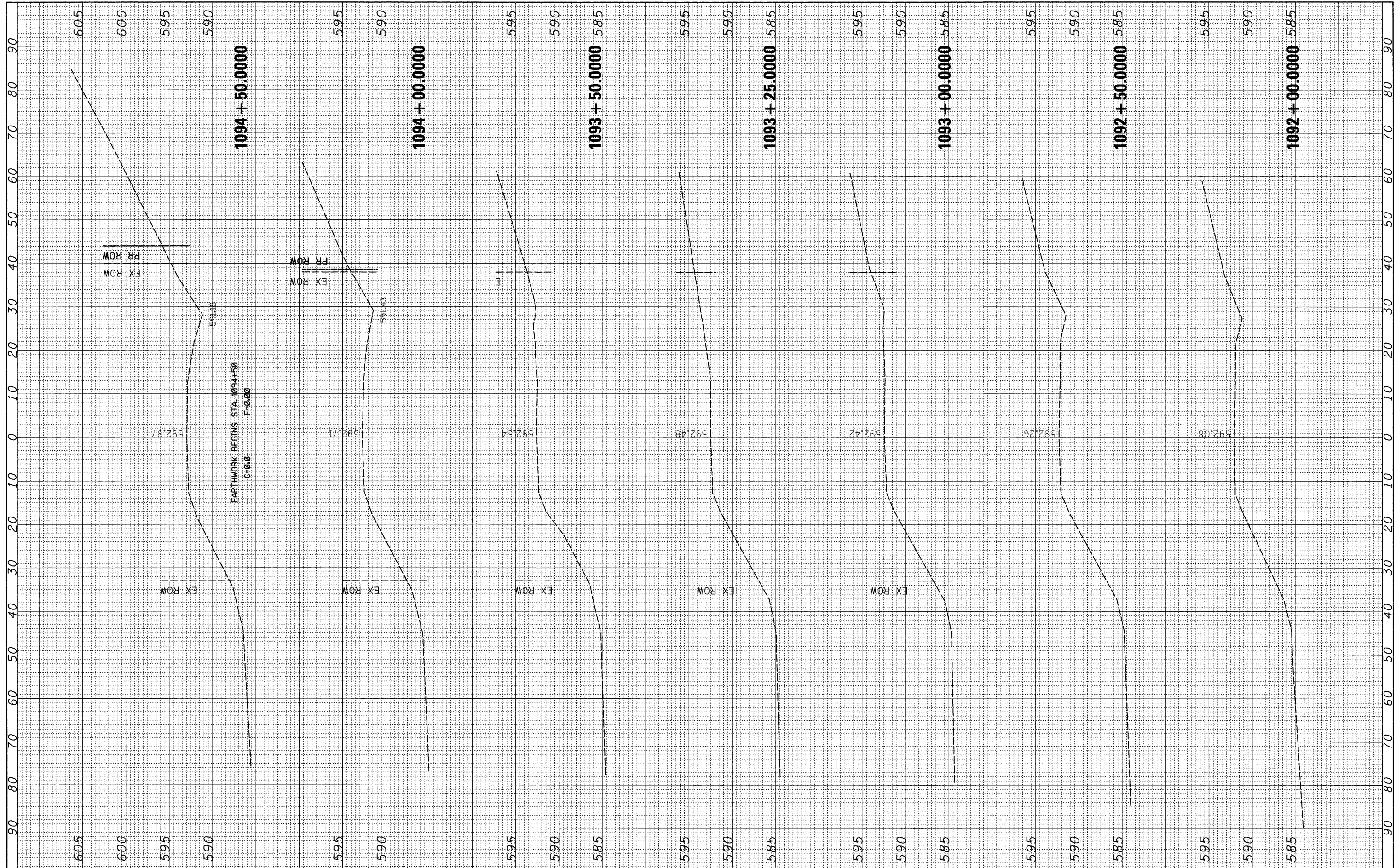
F.A.P. RTE.	SECTION	COUNTY	TOTAL SHEETS	SHEET NO.
599	(42MFT)-1	ROCK ISLAND	26	23
FED. ROAD DIST. NO.		ILLINOIS FED. AID PROJECT		
		CONTRACT NO. 64C76		

SCALE: SHEET NO. OF SHEETS STA. TO STA.



FINAL SURVEY	SURVEYED	BY	DATE
NOTE BOOK	PLOTTED		
NO.	TEMPLATE		
	AREAS CHECKED		

ORIGINAL SURVEY	SURVEYED	BY	DATE
NOTE BOOK	PLOTTED		
NO.	TEMPLATE		
	AREAS CHECKED		



FILE NAME =  
 USER NAME = hensonka  
 PLOT SCALE = 10.0000 ft / IN.  
 PLOT DATE = Thu Oct 09 07:54:53 2008

DESIGNED -  
 DRAWN -  
 CHECKED -  
 DATE -

REVISED -  
 REVISED -  
 REVISED -  
 REVISED -

**STATE OF ILLINOIS  
 DEPARTMENT OF TRANSPORTATION**

**MAINLINE CROSS-SECTIONS**

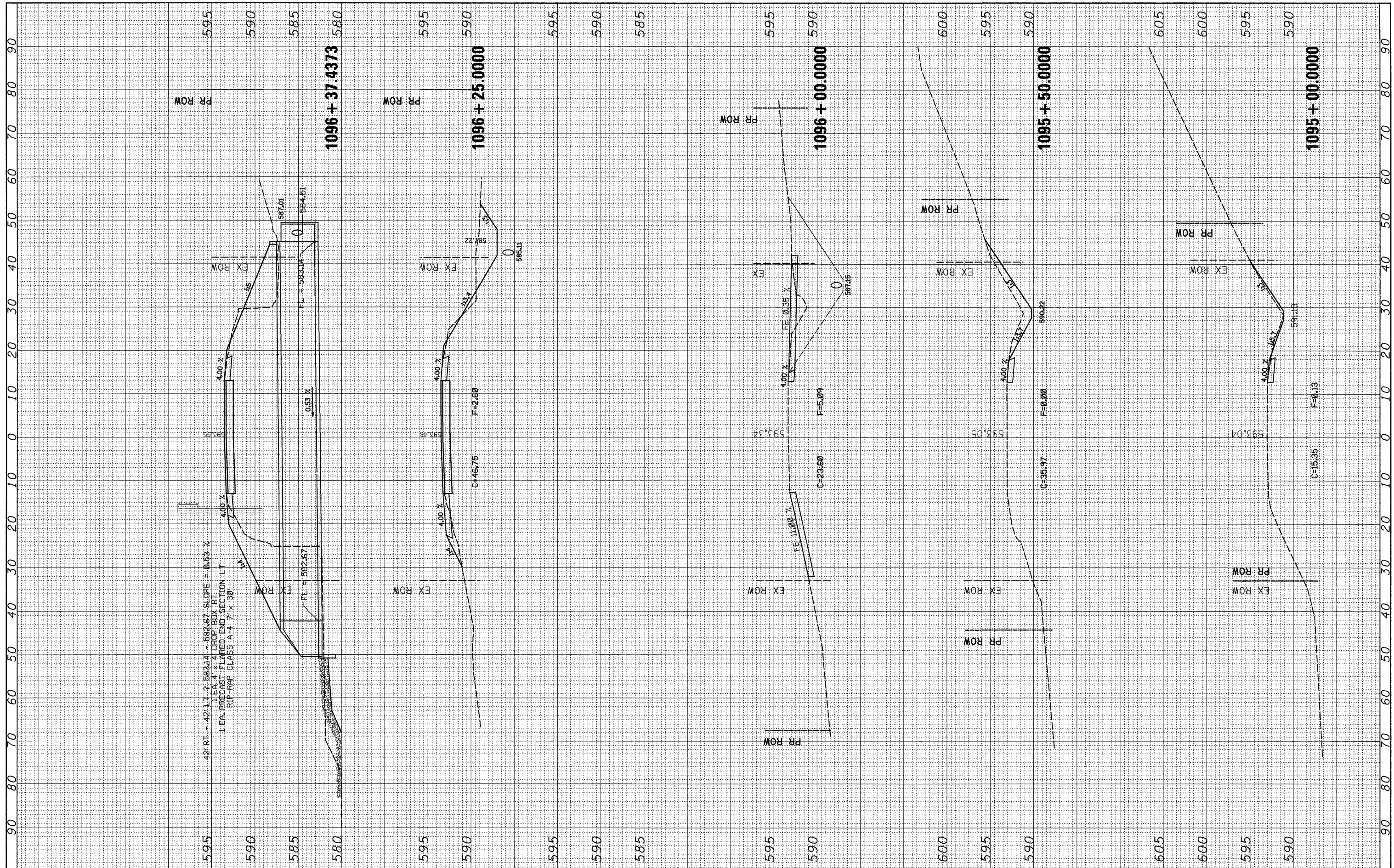
SCALE: SHEET NO. OF SHEETS STA. 1092+00.0000 TO STA. 1094+50.0000

F.A.P. RTE.	SECTION	COUNTY	TOTAL SHEETS	SHEET NO.
599	(42MFT)-1	ANDELUSIA	26	24
FED. ROAD DIST. NO.		ILLINOIS FED. AID PROJECT		
		CONTRACT NO. 64C76		



FINAL SURVEY	SURVEYED	BY	DATE
NOTE BOOK	PLOTTED		
NO.	TEMPLATE		
	AREAS CHECKED		

ORIGINAL SURVEY	SURVEYED	BY	DATE
NOTE BOOK	PLOTTED		
NO.	TEMPLATE		
	AREAS CHECKED		



FILE NAME =  
 USER NAME = hansonke  
 DESIGNED -  
 DRAWN -  
 CHECKED -  
 DATE -

REVISD -  
 REVISD -  
 REVISD -  
 REVISD -

**STATE OF ILLINOIS  
 DEPARTMENT OF TRANSPORTATION**

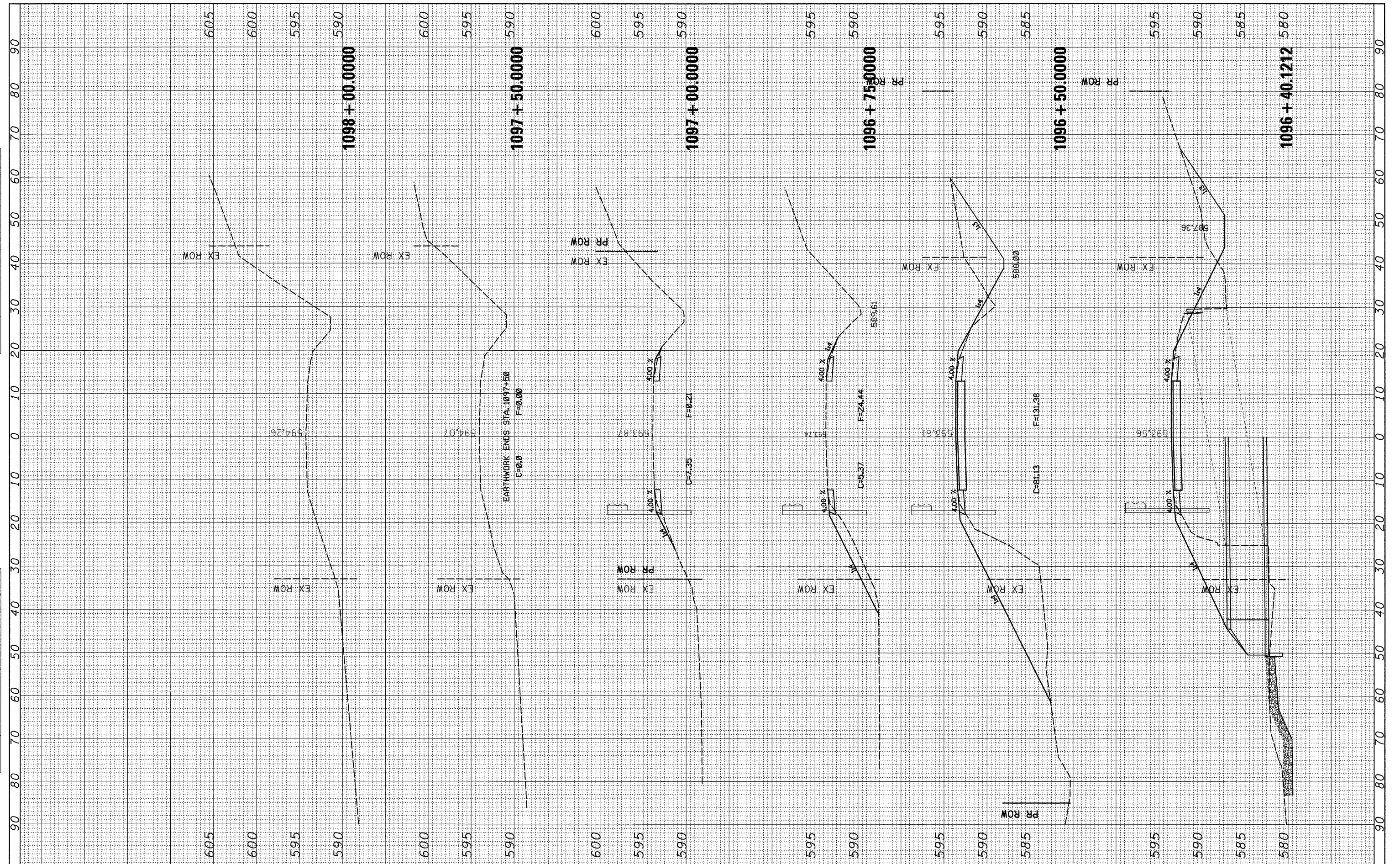
SCALE: SHEET NO. OF SHEETS STA. 1095+00.0000 TO STA. 1096+37.4373

F.A.P. RTE.	SECTION	COUNTY	TOTAL SHEETS	SHEET NO.
599	(42MFT)-1	ROCK ISLAND	26	25
FED. ROAD DIST. NO.		ILLINOIS FED. AID PROJECT		



FINAL SURVEY	SURVEYED	BY	DATE
NOTE BOOK	PLOTTED		
NO.	TEMPLATE		
	AREAS CHECKED		

ORIGINAL SURVEY	SURVEYED	BY	DATE
NOTE BOOK	PLOTTED		
NO.	TEMPLATE		
	AREAS CHECKED		



FILE NAME =  
 es:\pwr\work\p\WIDOT\HENSONKE\dms31387\d00707.xml.dgn

USER NAME = hensonke  
 DESIGNED -  
 DRAWN -  
 PLOT SCALE = 10,0000 ft / in.  
 CHECKED -  
 PLOT DATE = Thu Oct 09 07:54:53 2008  
 DATE -

REVIS  
 REVIS  
 REVIS  
 REVIS

**STATE OF ILLINOIS  
 DEPARTMENT OF TRANSPORTATION**

SCALE: SHEET NO. OF SHEETS STA. 1096+40.1212 TO STA. 1098+00.0000

F.A.P. RTE.	SECTION	COUNTY	TOTAL SHEETS	SHEET NO.
599	(42MFT)-1	ROCK ISLAND	26	26
		CONTRACT NO. 64C76		
		ILLINOIS FED. AID PROJECT		