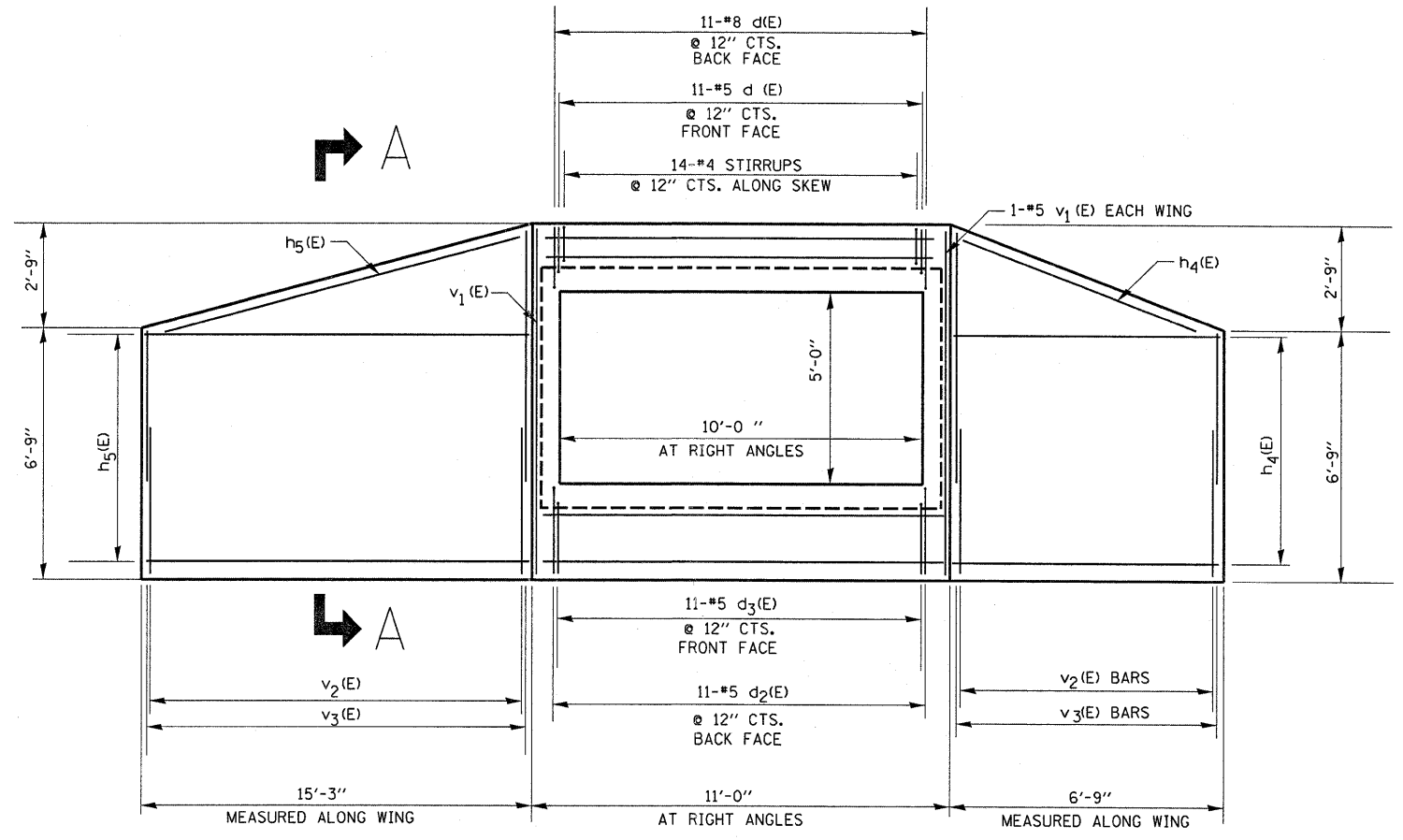
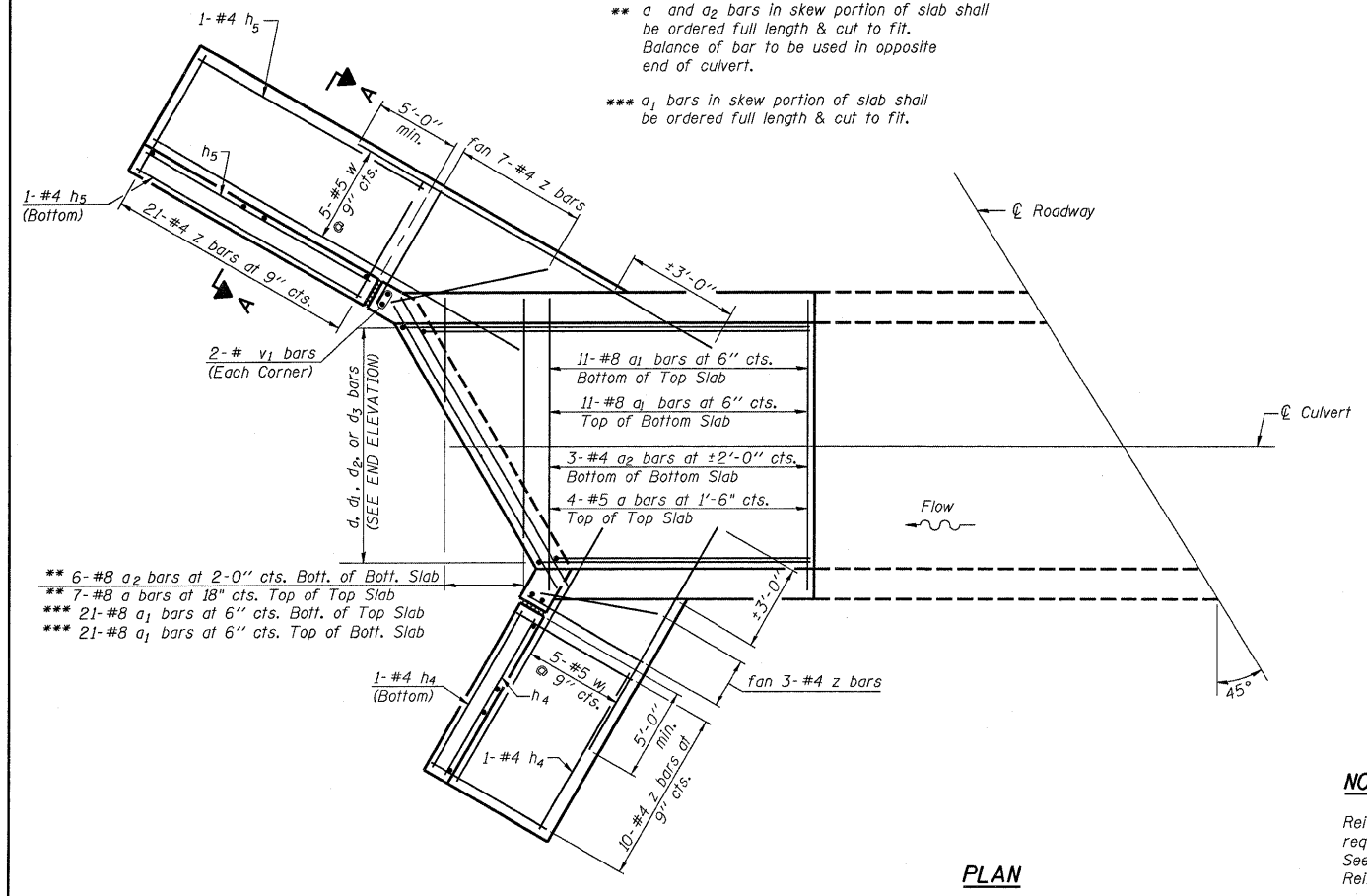


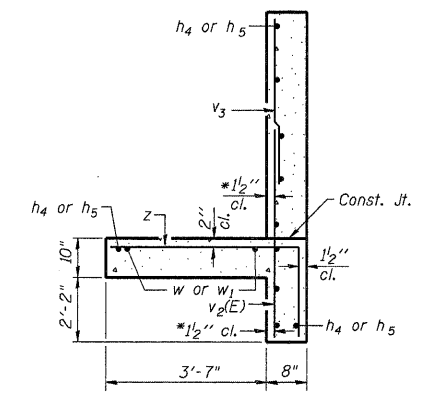
**SECTION THRU BARREL**



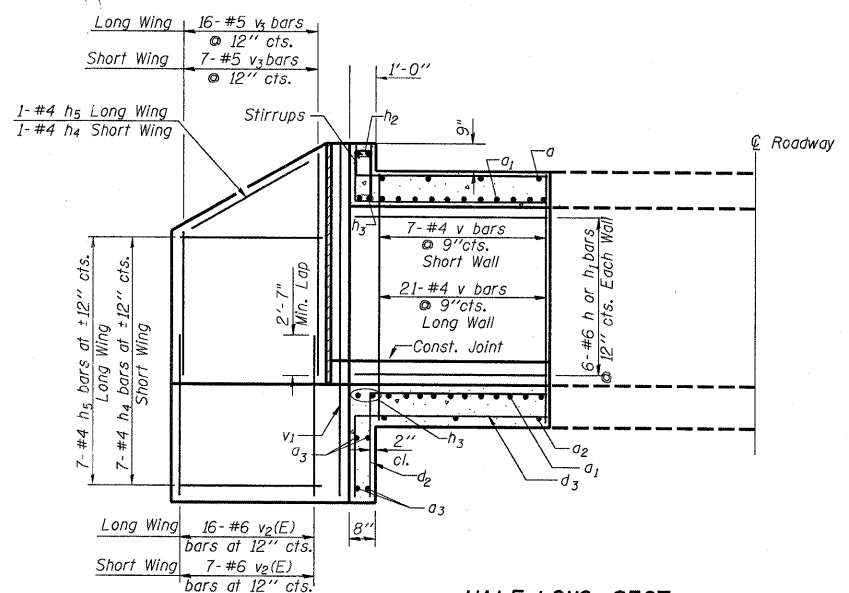
**END ELEVATION**



**PLAN**



**SECTION A-A**



**HALF LONG. SECT.**

\*\* a and a<sub>2</sub> bars in skew portion of slab shall be ordered full length & cut to fit. Balance of bar to be used in opposite end of culvert.

\*\*\* a<sub>1</sub> bars in skew portion of slab shall be ordered full length & cut to fit.

\*\* 6-#8 a<sub>2</sub> bars at 2'-0" cts. Bott. of Bott. Slab  
 \*\* 7-#8 a bars at 18" cts. Top of Top Slab  
 \*\*\* 21-#8 a<sub>1</sub> bars at 6" cts. Bott. of Top Slab  
 \*\*\* 21-#8 a<sub>1</sub> bars at 6" cts. Top of Bott. Slab

**NOTES**

Reinforcement bars shall conform to the requirements of ASTM A 706 Gr 60. See Special Provisions. Reinforcement bars designated (E). All Reinforcement Bars shall be Epoxy Coated.

FILE NAME =	USER NAME = carpenterd	DESIGNED -	REVISD -
EP03107-ht-culvert details.DGN		DRAWN -	REVISD -
PLOT SCALE = 50.0000' / IN.		CHECKED -	REVISD -
PLOT DATE = Oct 22, 2008 - 08:35:38 AM		DATE -	REVISD -

**STATE OF ILLINOIS  
 DEPARTMENT OF TRANSPORTATION**

**END SECTION AND BOX CULVERT DETAILS**

SCALE: \_\_\_\_\_ SHEET NO. \_\_\_\_ OF \_\_\_\_ SHEETS STA. \_\_\_\_\_ TO STA. \_\_\_\_\_

F.A.P. RTE.	SECTION	COUNTY	TOTAL SHEETS	SHEET NO.
646	(122)I	BUREAU	18	9
CONTRACT NO. 66858				
FED. ROAD DIST. NO. _____ ILLINOIS FED. AID PROJECT				