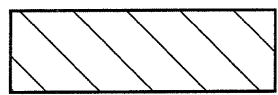
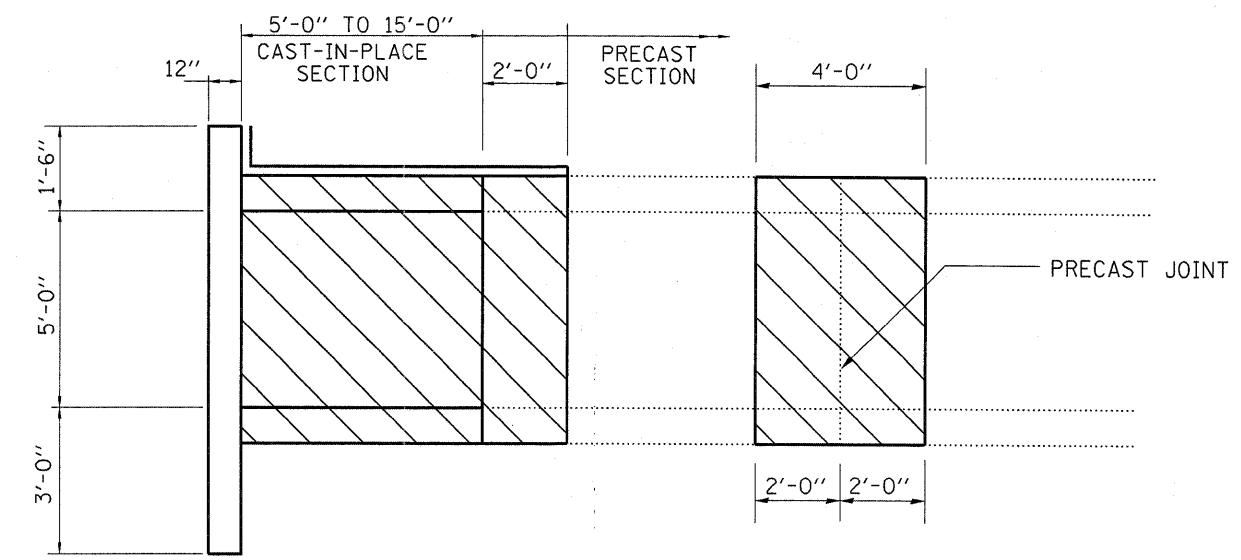


PLAN

DOWNSTREAM END SHOWN
UPSTREAM END SIMILAR



WATERPROOFING MEMBRANE



SIDE ELEVATION

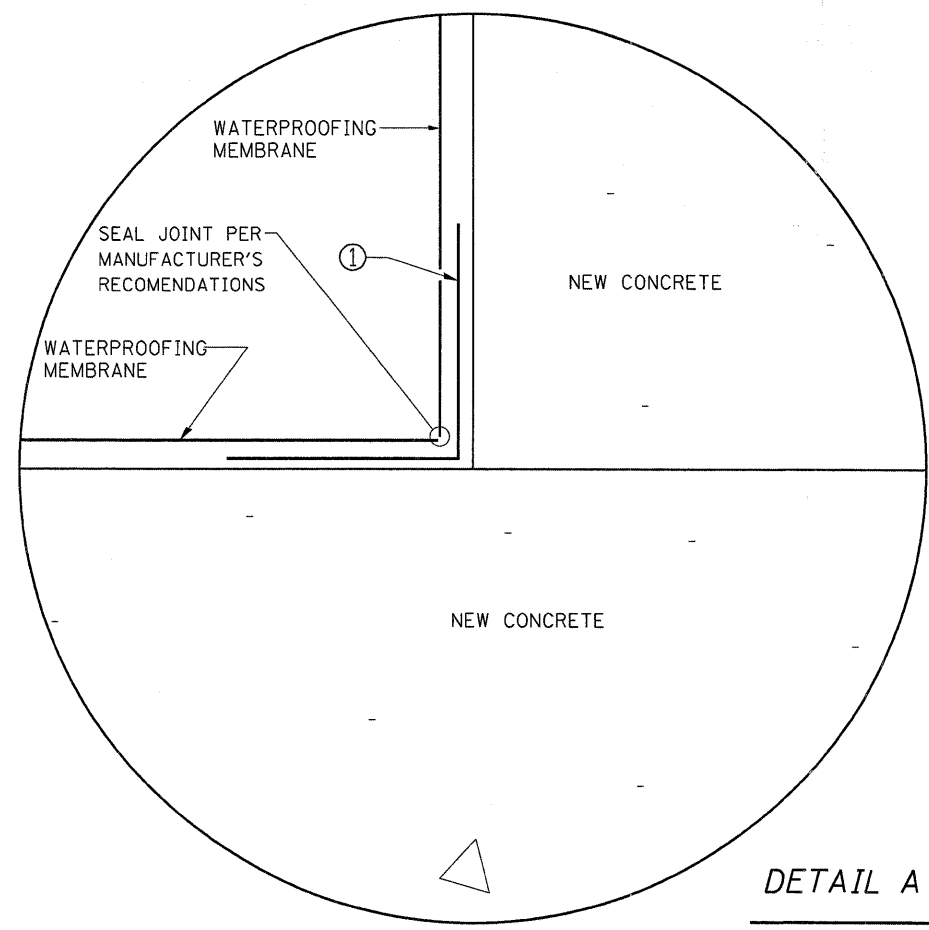
① A TWO FOOT (2') MIN WIDTH STRIP OF WATERPROOFING MEMBRANE SHALL BE PLACED CENTERED OVER THE CONSTRUCTION JOINT PRIOR TO APPLYING A FULL PROTECTIVE LAYER TO THE CONCRETE SURFACES.

**BILL OF MATERIAL
TOTAL - BOTH WINGS**

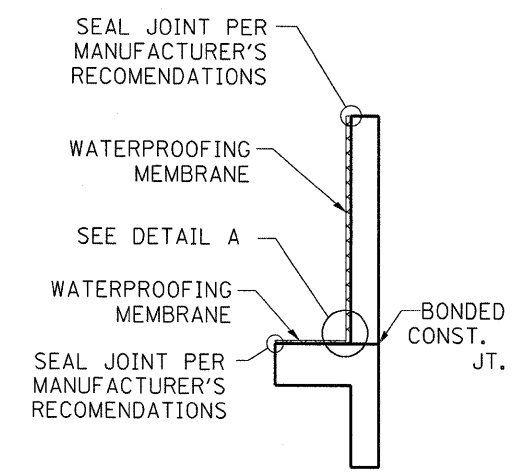
SHEET WATERPROOFING MEMBRANE SYSTEM	SQ. YD.	11
-------------------------------------	---------	----

**BILL OF MATERIAL
BOX CULVERT**

SHEET WATERPROOFING MEMBRANE SYSTEM	SQ. YD.	114
-------------------------------------	---------	-----



DETAIL A



END ELEVATION

NOTES:

THE EXPOSED SURFACES AS INDICATED SHALL BE PROTECTED BY THE WATERPROOFING MEMBRANE AS PER THE MANUFACTURER'S RECOMENDATIONS.

A MANUFACTURER'S REPRESENTATIVE SHALL BE ON SITE DURING THE INSTALLATION OF THE WATERPROOFING MEMBRANE TO PROVIDE TECHNICAL SUPPORT WHEN REQUIRED. ALL COST INCURRED DUE TO THE ON-SITE REPRESENTATIVE SHALL NOT BE PAID FOR SEPARATELY BUT SHALL BE INCLUDED IN THE UNIT COST OF THE WATERPROOFING MEMBRANE WORK.

THE CONTRACTOR SHALL INSTALL THE WATERPROOFING MEMBRANE ACCORDING TO THE MANUFACTURER'S RECOMMENDATIONS, PLAN DETAILS AND AS DIRECTED BY THE ENGINEER.

FILE NAME =	USER NAME = carpenterdj	DESIGNED -	REVISED -	STATE OF ILLINOIS DEPARTMENT OF TRANSPORTATION	WATERPROOFING MEMBRANE SYSTEM	F.A.P. RTE.	SECTION	COUNTY	TOTAL SHEETS	SHEET NO.	
ci\pw_work\VPWIDOT\CARPENTERDJ\dms30350	EP03107-sht-culvert details.DGN	DRAWN -	REVISED -			646	(1221)	BUREAU	18	12	
PLOT SCALE = 5/8"=1'-0" IN.		CHECKED -	REVISED -			CONTRACT NO. 66858					
PLOT DATE = Oct 22, 2008 - 08:34:39 AM		DATE -	REVISED -			FED. ROAD DIST. NO. ILLINOIS FED. AID PROJECT					