

F.A.P. RTE.	SECTION	COUNTY	TOTAL SHEETS	SHEET NO.
311	(5B-1)I	LASALLE	13	1
FED. ROAD DIST. NO. ...		ILLINOIS	CONTRACT NO. 66867	

STATE OF ILLINOIS  
DEPARTMENT OF TRANSPORTATION  
DIVISION OF HIGHWAYS

**PROPOSED  
HIGHWAY PLANS**

FAP ROUTE 311 (IL 71)  
SECTION (5B-1)I

**WINGWALL REPAIR  
LASALLE COUNTY**

C-93-015-09

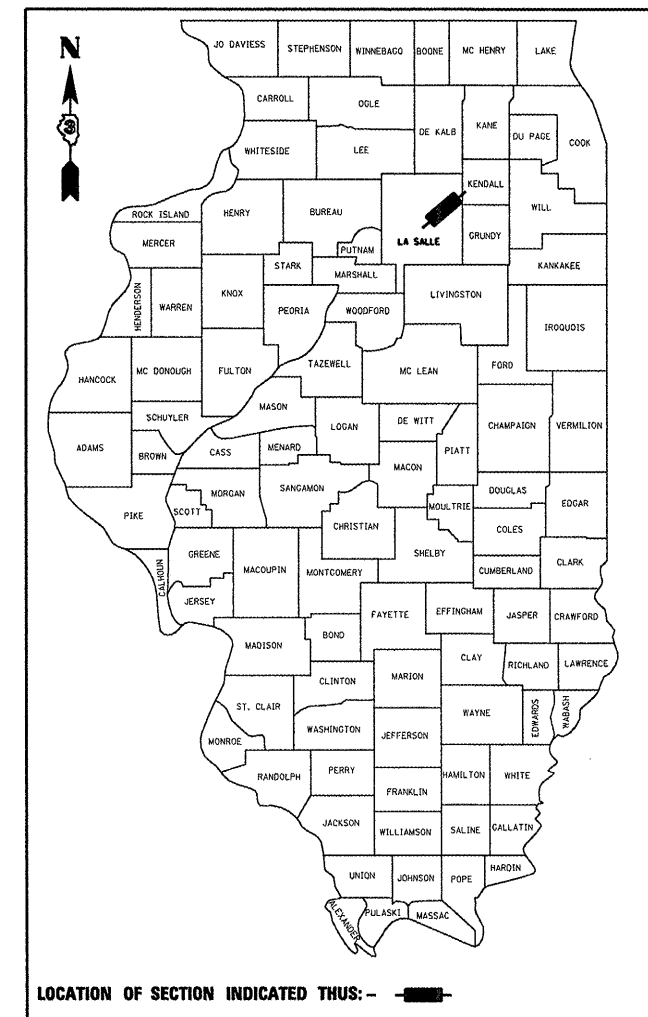
INDEX OF SHEETS

1. COVER SHEET
2. GENERAL NOTES
3. SUMMARY OF QUANTITIES
4. TYPICAL SECTION
5. GENERAL ROADWAY PLAN
6. TEMPORARY SOIL RETENTION DETAILS
7. BORING LOGS
8. STRUCTURE EXCAVATION DETAILS
9. CONCRETE REMOVAL DETAILS
10. CONCRETE BOX CULVERT DETAILS
11. WATERPROOFING DETAILS
12. STRUCTURAL REPAIR OF CONCRETE
13. EROSION REPAIR DETAILS

STANDARDS

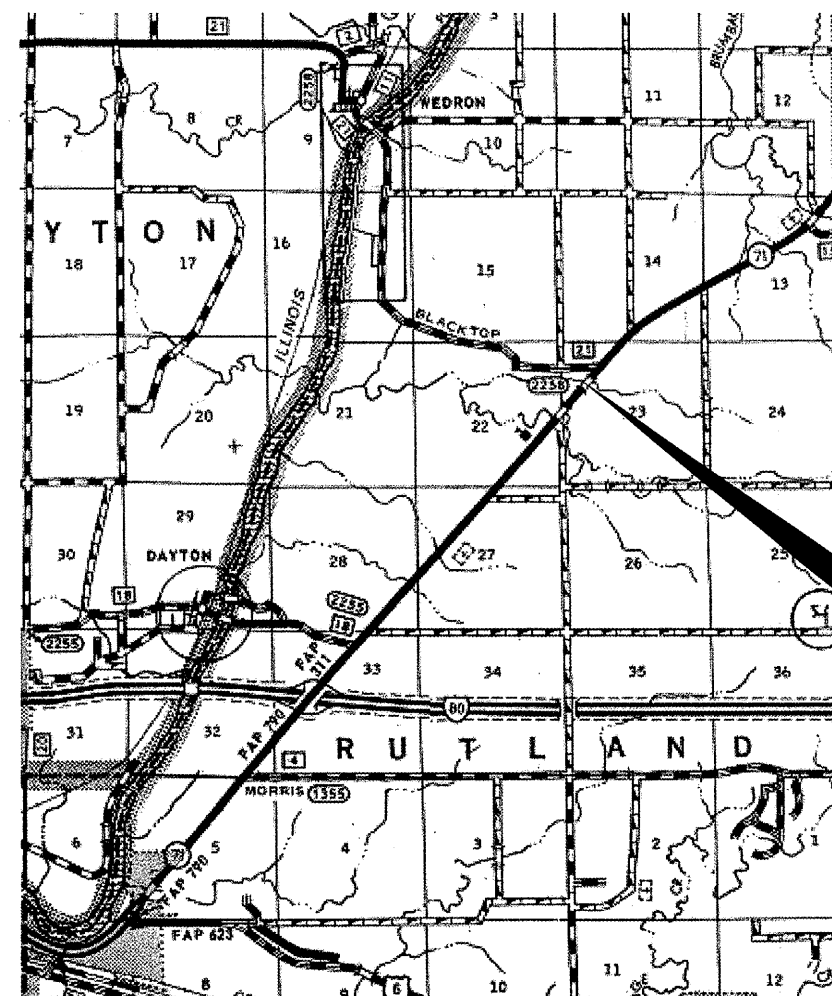
- |           |  |
|-----------|--|
| 000001-05 | STANDARD SYMBOLS, ABBREVIATIONS AND PATTERNS                               |
| 001001-02 | AREAS OF REINFORCEMENT BARS  |
| 001006    | DECIMAL OF AN INCH AND OF A FOOT   |
| 701001-02 | OFF-ROAD OPERATIONS 2L, 2W, MORE THAN 4.5 m (15') AWAY                     |
| 701006-03 | OFF-ROAD OPERATIONS 2L, 2W, 4.5 m (15') TO 600 mm (24") FROM PAVEMENT EDGE |
| 701201-03 | LANE CLOSURE, 2L, 2W, DAY ONLY, FOR SPEEDS $\geq$ 45 MPH                   |
| 701301-03 | LANE CLOSURE, 2L, 2W, SHORT TIME OPERATIONS                                |
| 701901-01 | TRAFFIC CONTROL DEVICES  |

D-93-002-09



LOCATION OF SECTION INDICATED THUS: - ■ -

FUNCTIONAL CLASSIFICATION  
RURAL - OTHER PRINCIPAL ARTERIAL  
F.A.P. ROUTE 311 (IL 71)  
2007 ADT = 5500  
P.V. = 84.1%    M.U. = 10.9%    S.U. = 5.0%



**PROJECT LOCATION**  
S.N. 050-2019  
DOUBLE BARREL BOX CULVERT  
OVER A STREAM  
2.88 MILES NORTHEAST  
OF I-80

LOCATION MAP  
NOT TO SCALE  
POINT LOCATION

J.U.L.I.E.  
JOINT UTILITY LOCATION INFORMATION FOR EXCAVATION  
1-800-892-0123  
OR 811

DISTRICT 3 NO. (815) 434-6131

PROJECT ENGINEER JOE KANNEL  
UNIT CHIEF RON WOODSHANK

CONTRACT NO. 66867

STATE OF ILLINOIS  
DEPARTMENT OF TRANSPORTATION  
DIVISION OF HIGHWAYS

SUBMITTED 10-29 20 08

*George F. Ryan* **SA**  
DEPUTY DIRECTOR OF HIGHWAYS, REGION ENGINEER  
December 5, 2008

*Eric E. Harn* **RD**  
INTERIM ENGINEER OF DESIGN AND ENVIRONMENT  
December 5, 2008

*Christine M. Reed* **RD**  
DIRECTOR OF HIGHWAYS, CHIEF ENGINEER

**PRINTED BY THE AUTHORITY  
OF THE STATE OF ILLINOIS**

GENERAL NOTES

PLAN DIMENSIONS AND DETAILS RELATIVE TO EXISTING PLANS ARE SUBJECT TO ROUTINE VARIATIONS. THE CONTRACTOR SHALL FIELD VERIFY EXISTING DIMENSIONS AND DETAILS AFFECTING NEW CONSTRUCTION AND MAKE NECESSARY APPROVED ADJUSTMENTS PRIOR TO CONSTRUCTION OR ORDERING OF MATERIALS. SUCH VARIATIONS SHALL NOT BE CAUSE FOR ADDITIONAL COMPENSATION FOR A CHANGE IN THE SCOPE OF THE WORK. HOWEVER, THE CONTRACTOR WILL BE PAID FOR THE QUANTITY FURNISHED BASED UPON THE UNIT BID PRICE FOR THE WORK.

THE CONTRACTOR SHALL BE RESPONSIBLE FOR PROTECTING UTILITY PROPERTY FROM CONSTRUCTION OPERATIONS AS OUTLINED IN ARTICLE 107.31 OF THE STANDARD SPECIFICATIONS. THE "JULIE" NUMBER IS 1-800-892-0123. A MINIMUM OF FORTY-EIGHT (48) HOURS ADVANCE NOTICE IS REQUIRED.

THE COST OF ANY SAW CUTS MADE TO COMPLETE THE WORK AS DESCRIBED IN PLAN DETAILS, UNLESS OTHERWISE NOTED SHALL NOT BE PAID FOR SEPARATELY BUT SHALL BE INCLUDED WITH THE VARIOUS PAY REMOVAL PAY ITEMS INVOLVED.

WHERE SECTION OR SUBSECTION MONUMENTS ARE ENCOUNTERED, THE ENGINEER SHALL BE NOTIFIED BEFORE SUCH MONUMENTS ARE REMOVED. THE CONTRACTOR SHALL PROTECT AND CAREFULLY PRESERVE ALL MONUMENTS UNTIL AN AUTHORIZED SURVEYOR OR AGENT HAS WITNESSED OR OTHERWISE REFERENCED THEIR LOCATION. THE CONTRACTOR SHALL BE RESPONSIBLE FOR HAVING AN AUTHORIZED SURVEYOR REESTABLISH ANY SECTION OR SUBSECTION MONUMENTS DESTROYED BY HIS OPERATIONS.

EXISTING REINFORCEMENT BARS EXTENDING INTO REMOVAL AREA SHALL BE CLEANED, STRAIGHTENED AND INCORPORATED INTO THE NEW CONSTRUCTION. ANY REINFORCEMENT BARS THAT ARE DAMAGED DURING CONCRETE REMOVAL SHALL BE REPLACED WITH AN APPROVED BAR SPLICER OR ANCHORAGE SYSTEM. COST INCLUDED WITH CONCRETE REMOVAL.

ABANDONED UNDERGROUND UTILITIES THAT CONFLICT WITH CONSTRUCTION SHALL BE DISPOSED OF OUTSIDE THE LIMITS OF THE RIGHT OF WAY ACCORDING TO ARTICLE 202.03 OF THE STANDARD SPECIFICATIONS AND AS DIRECTED BY THE ENGINEER. THIS WORK WILL NOT BE PAID FOR SEPARATELY BUT SHALL BE INCLUDED IN THE COST OF REQUIRED EXCAVATION WORK.

THE EXISTING SHOULDERS ARE LOW. IN THE EVENT THAT CONSTRUCTION OPERATIONS RESULT IN A DROP OFF GREATER THAN 3" BETWEEN THE EDGE OF PAVEMENT OR EDGE OF SHOULDER WITHIN 3' OF THE EDGE OF PAVEMENT AND THE EARTH OR AGGREGATE SHOULDERS, THEN THE DROP OFF SHALL BE PROTECTED ACCORDING TO ARTICLE 701.04(B)(1) OF THE STANDARD SPECIFICATIONS. THIS WORK WILL BE CONSIDERED AS INCLUDED IN THE CONTRACT UNIT PRICES FOR TRAFFIC CONTROL.

REINFORCEMENT BARS SHALL CONFORM TO THE REQUIREMENTS OF ASTM A 706 GR 60 (IL MODIFIED). SEE SPECIAL PROVISIONS.

REINFORCEMENT BARS DESIGNATED (E) SHALL BE EPOXY COATED.

DATE: Oct 27, 2008  
 PREPARED BY: *Paul Powell*  
 DISTRICT STUDIES & PLANS ENGINEER  
 EXAMINED BY: *Herbert R. ...*  
 DISTRICT CONSTRUCTION ENGINEER  
*Wayne Phillips*  
 DISTRICT MATERIALS ENGINEER  
*Bruce A. ...*  
 DISTRICT OPERATIONS ENGINEER

FILE NAME =	USER NAME = woodshankr1	DESIGNED - RON WOODSHANK	REVISED -	<b>STATE OF ILLINOIS DEPARTMENT OF TRANSPORTATION</b>	<b>GENERAL NOTES</b>	F.A.P. RTE.	SECTION	COUNTY	TOTAL SHEETS	SHEET NO.
c:\pwork\PW1001\WOODSHANKR1\dms39912	cm316-detail.dgn	DRAWN - RON WOODSHANK	REVISED -			311	(5B-11)	LASALLE	13	2
PLOT SCALE = 100.0000' / IN.	CHECKED -	REVISOR -	REVISOR -			CONTRACT NO. 66867				
PLOT DATE = Oct 01, 2008 - 12:00:25 PM	DATE - 08/21/2008	REVISOR -	REVISOR -			FED. ROAD DIST. NO. ILLINOIS				
				SCALE: _____	SHEET NO. 1 OF 1 SHEETS	STA. _____	TO STA. _____			

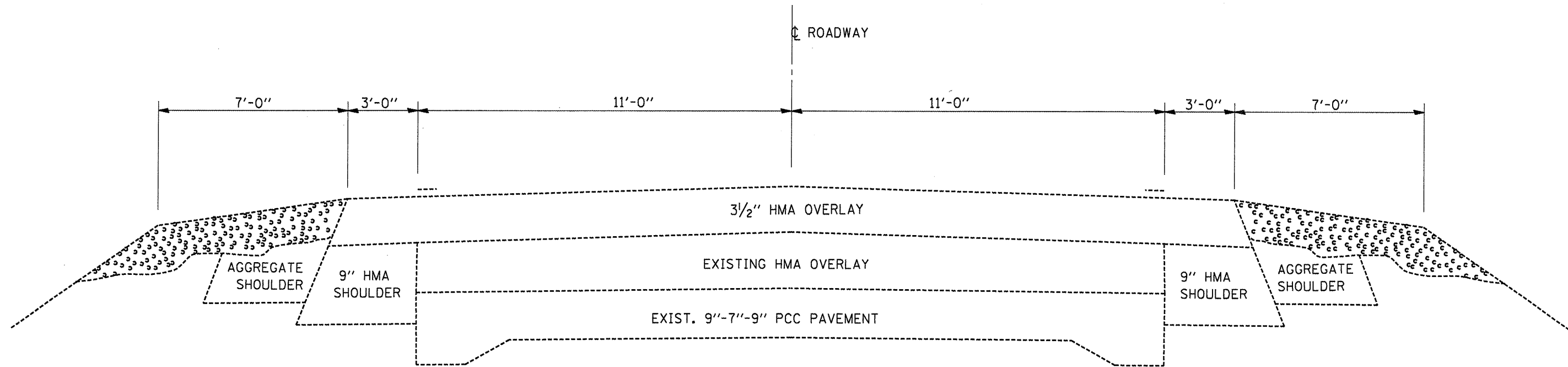
# SUMMARY OF QUANTITIES

CONSTRUCTION CODE TYPE:

SFTY-2A

RURAL  
100% STATE  
TOTAL  
QUANTITY

CODE NO.	ITEM	UNIT	RURAL 100% STATE TOTAL QUANTITY
20300100	CHANNEL EXCAVATION	CU YD	50
20400800	FURNISHED EXCAVATION	CU YD	148.6
25100635	HEAVY DUTY EROSION CONTROL BLANKET	SQ YD	86
X0326244	PAVED DITCH REMOVAL AND REPLACEMENT	SQ YD	58
48101200	AGGREGATE SHOULDERS, TYPE B	TON	10
50102400	CONCRETE REMOVAL	CU YD	10.6
50200100	STRUCTURE EXCAVATION	CU YD	148.6
50800205	REINFORCEMENT BARS, EPOXY COATED	POUND	1600
54003000	CONCRETE BOX CULVERTS	CU YD	10.6
67100100	MOBILIZATION	L SUM	1
70100450	TRAFFIC CONTROL AND PROTECTION, STANDARD 701201	L SUM	1
X0322121	SHEET WATERPROOFING MEMBRANE SYSTEM	SQ YD	90
X0323988	TEMPORARY SOIL RETENTION SYSTEM	SQ FT	1407
X0325305	STRUCTURAL REPAIR OF CONCRETE (DEPTH LESS THEN OR EQUAL TO 5 INCHES)	SQ FT	31



TYPICAL SECTION

FILE NAME =	USER NAME = woodshankr1	DESIGNED - RON WOODSHANK	REVISED -
ei\pwwork\pwwid\WOODSHANKRL\dms39912	cm316-details.dgn	DRAWN - RON WOODSHANK	REVISED -
	PLOT SCALE = 181.9638 / IN.	CHECKED -	REVISED -
	PLOT DATE = Oct 01, 2008 - 12:00:43 PM	DATE - 08/21/2008	REVISED -

**STATE OF ILLINOIS  
DEPARTMENT OF TRANSPORTATION**

**TYPICAL SECTION**

SCALE: \_\_\_\_\_ SHEET NO. 1 OF 1 SHEETS STA. \_\_\_\_\_ TO STA. \_\_\_\_\_

F.A.P. RTE.	SECTION	COUNTY	TOTAL SHEETS	SHEET NO.
311	(5B-1)I	LASALLE	13	4
FED. ROAD DIST. NO. - [ILLINOIS]			CONTRACT NO. 66867	

**LEGEND**

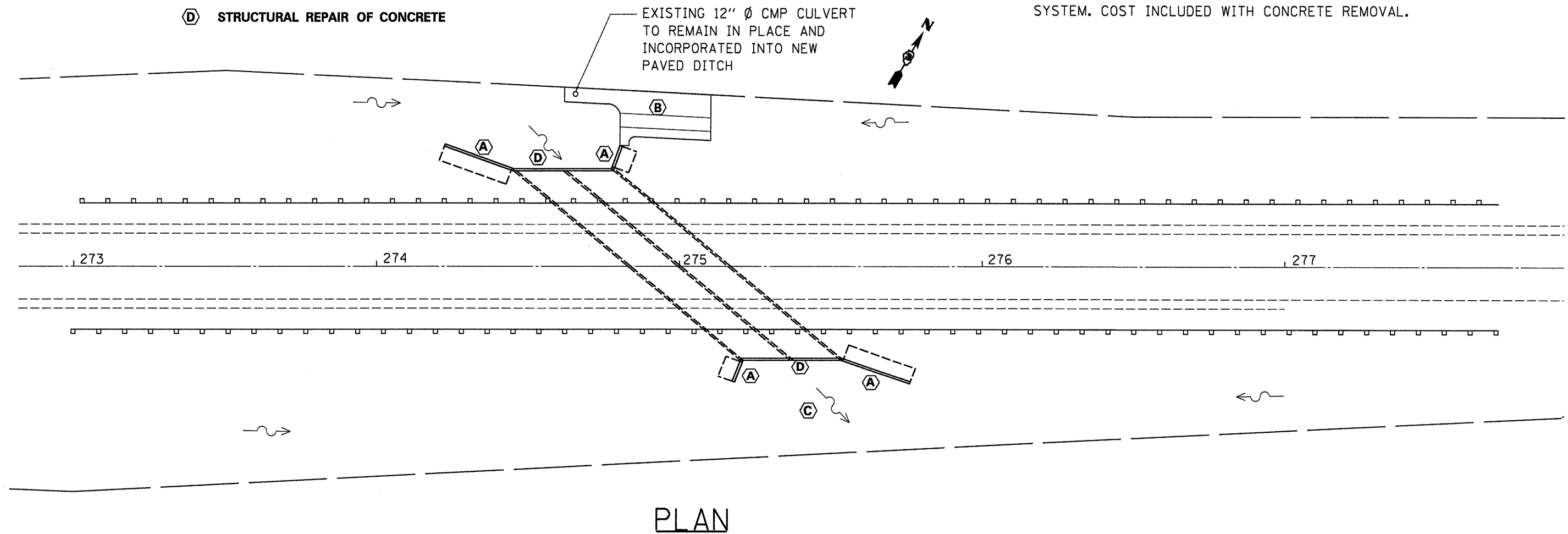
- (A) REMOVE AND REPLACE WING WALL STEM AND WATERPROOF
- (B) REMOVE AND REPLACE PAVED DITCH
- (C) CHANNEL EXCAVATION
- (D) STRUCTURAL REPAIR OF CONCRETE

**GENERAL NOTES**

REINFORCEMENT BARS SHALL CONFORM TO THE REQUIREMENTS OF ASTM A 706 GR 60 (IL MODIFIED). SEE SPECIAL PROVISIONS.

REINFORCEMENT BARS DESIGNATED (E) SHALL BE EPOXY COATED.

EXISTING REINFORCEMENT BARS EXTENDING INTO REMOVAL AREA SHALL BE CLEANED, STRAIGHTENED AND INCORPORATED INTO THE NEW CONSTRUCTION. ANY REINFORCEMENT BARS THAT ARE DAMAGED DURING CONCRETE REMOVAL SHALL BE REPLACED WITH AN APPROVED BAR SPLICER OR ANCHORAGE SYSTEM. COST INCLUDED WITH CONCRETE REMOVAL.



PLAN

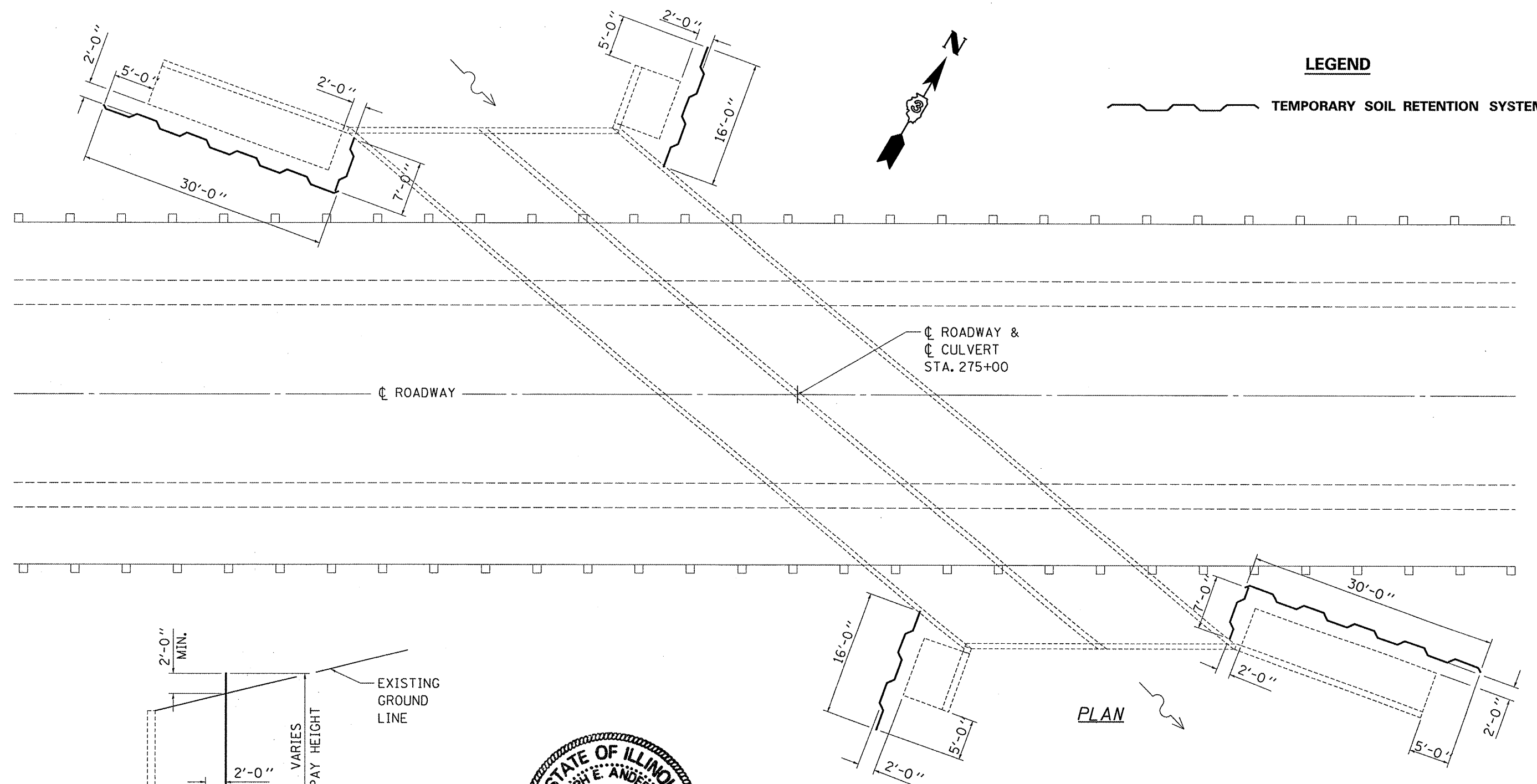
FILE NAME =	USER NAME = woodshankr1	DESIGNED - RON WOODSHANK	REVISED -
er\paw\work\VPWIDOT\WOODSHANKRL\dms39912	cm316-details.dgn	DRAWN - RON WOODSHANK	REVISED -
	PLOT SCALE = 1/8" = 1' / IN.	CHECKED -	REVISED -
	PLOT DATE = Oct 01, 2008 - 12:00:55 PM	DATE - 08/21/2008	REVISED -

STATE OF ILLINOIS  
DEPARTMENT OF TRANSPORTATION

GENERAL ROADWAY PLAN

SCALE: SHEET NO. 1 OF 8 SHEETS STA. TO STA.

F.A.P. RTE.	SECTION	COUNTY	TOTAL SHEETS	SHEET NO.
311	(5B-1)I	LASALLE	13	5
CONTRACT NO. 66867			FED. ROAD DIST. NO. [ILLINOIS]	



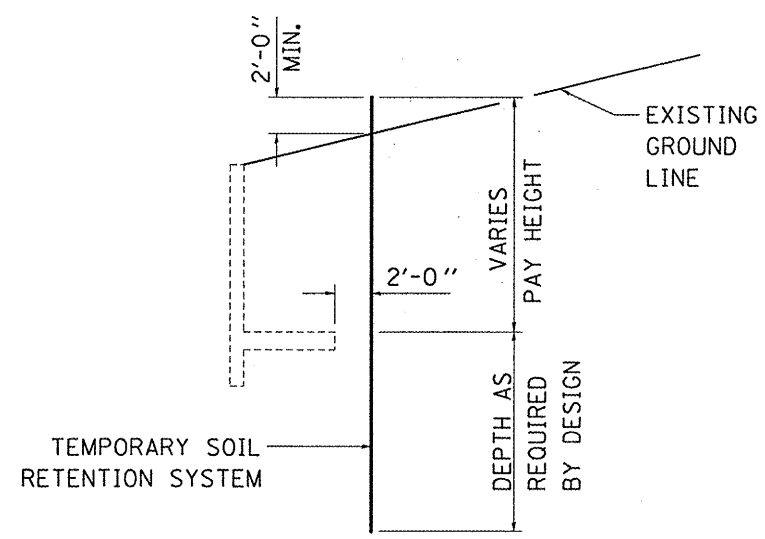
**LEGEND**

TEMPORARY SOIL RETENTION SYSTEM

☉ ROADWAY &  
☉ CULVERT  
STA. 275+00

☉ ROADWAY

PLAN



**TYPICAL SECTION**

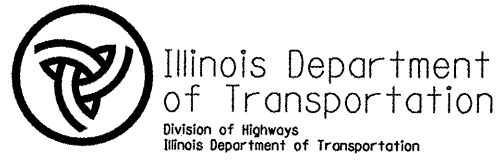


EXPIRES 11-30-2010

**BILL OF MATERIALS**

LOCATION	TEMPORARY SOIL RETENTION SYSTEM SQ FT
NW WINGWALL	206
SW WINGWALL	476
NE WINGWALL	506
NW WINGWALL	219
TOTAL	1407

FILE NAME =	USER NAME = #USER#	DESIGNED - RON WOODSHANK	REVISED -	STATE OF ILLINOIS DEPARTMENT OF TRANSPORTATION	TEMPORARY SOIL RETENTION SYSTEM S.N. 050-2019	F.A.P. RTE. 311	SECTION (5B-1)I	COUNTY LASALLE	TOTAL SHEETS 13	SHEET NO. 6		
#FILE#	PLOT SCALE = #SCALE#	DRAWN - RON WOODSHANK	REVISED -			SCALE: .....	SHEET NO. 2 OF 9 SHEETS	STA. .... TO STA. ....	FED. ROAD DIST. NO. ILLINOIS	CONTRACT NO. 66867		
	PLOT DATE = #DATE#	CHECKED -	REVISED -									
		DATE - 08/21/2008	REVISED -									



SOIL BORING LOG

DATE 9/12/08

ROUTE FAP 311 (IL 71) DESCRIPTION Wingwall Borings LOGGED BY LM

SECTION (5B-11) LOCATION NW 1/4, SEC. 23, TWP. 34N, RNG. 4E

COUNTY LaSalle DRILLING METHOD Hollow Stem Auger HAMMER TYPE CME Automatic

STRUCT. NO. 050-2019 WEATHER COND. TEMP. Station 275+00

BORING NO. 1 Station 275+48 Offset 19.00ft RT Longitude/Northing Latitude/Easting Ground Surface Elev. 618.60 ft

Table with columns for Depth (ft), Blows (1/6" (tsf) (%)), Soil Description, and SPT (ft) (1/6" (tsf) (%)). Includes soil types like 'Stiff Gray Clay with Minor Silt' and 'Dense Gray Fine Sand to Coarse Gravel with Free Water'.

The Unconfined Compressive Strength (UCS) Failure Mode is indicated by (B-Bulge, S-Shear, P-Penetrometer) The SPT (N value) is the sum of the last two blow values in each sampling zone (AASHTO T206) Northing & Easting are in Illinois State Plan Coordinates (ISPC), East Zone. Longitude & Latitude are in North American Datum (NAD) 83, Decimal Degree.



SOIL BORING LOG

DATE 9/12/08

ROUTE FAP 311 (IL 71) DESCRIPTION Wingwall Borings LOGGED BY LM

SECTION (5B-11) LOCATION NW 1/4, SEC. 23, TWP. 34N, RNG. 4E

COUNTY LaSalle DRILLING METHOD Hollow Stem Auger HAMMER TYPE CME Automatic

STRUCT. NO. 050-2019 WEATHER COND. TEMP. Station 275+00

BORING NO. 2 Station 274+20 Offset 18.00ft LT Longitude/Northing Latitude/Easting Ground Surface Elev. 618.42 ft

Table with columns for Depth (ft), Blows (1/6" (tsf) (%)), Soil Description, and SPT (ft) (1/6" (tsf) (%)). Includes soil types like 'Very Stiff Gray Clay with Minor Silt' and 'Tan/White CA6 Backfill and Gravel, Silty Clay Loam Layers with Oversize Concrete Debris 2.4'.

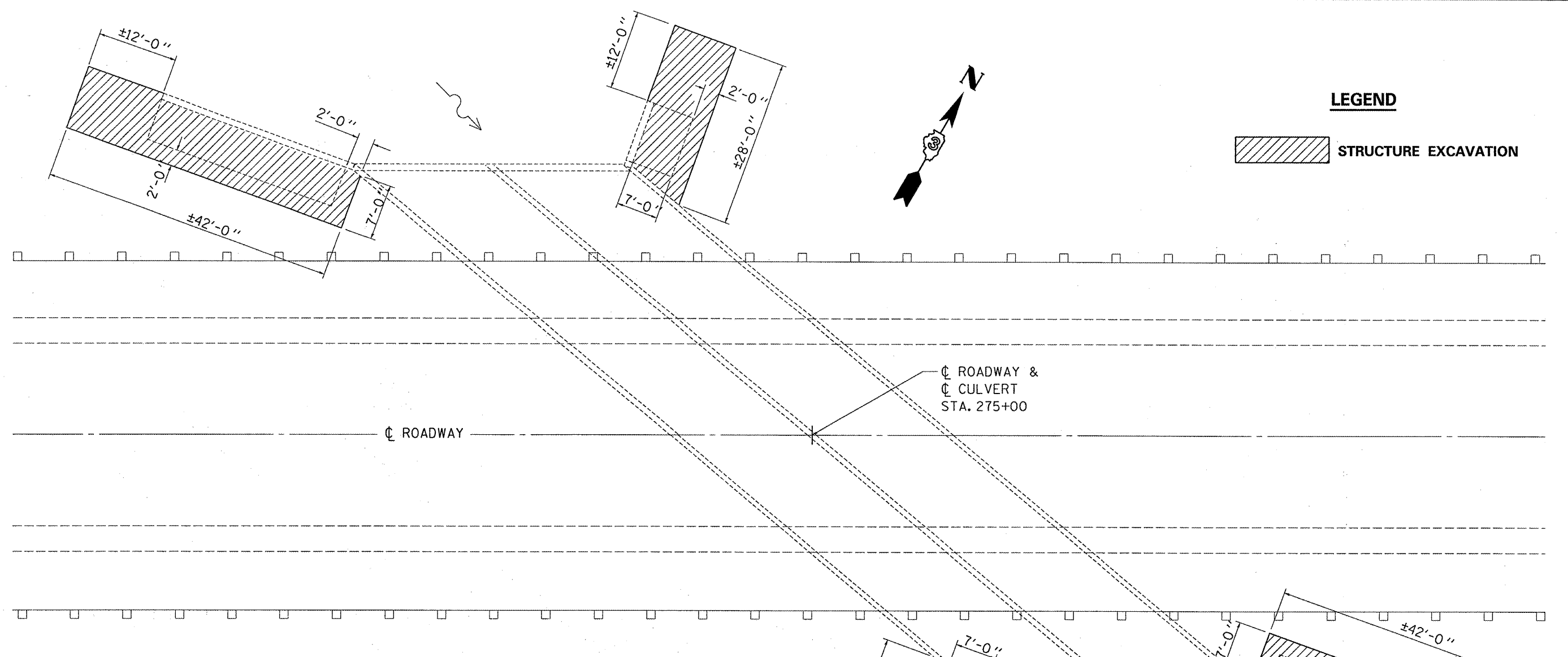
The Unconfined Compressive Strength (UCS) Failure Mode is indicated by (B-Bulge, S-Shear, P-Penetrometer) The SPT (N value) is the sum of the last two blow values in each sampling zone (AASHTO T206) Northing & Easting are in Illinois State Plan Coordinates (ISPC), East Zone. Longitude & Latitude are in North American Datum (NAD) 83, Decimal Degree.

Table with columns: FILE NAME, USER NAME, DESIGNED, REVISIONS, DRAWN, CHECKED, DATE, REVISED.

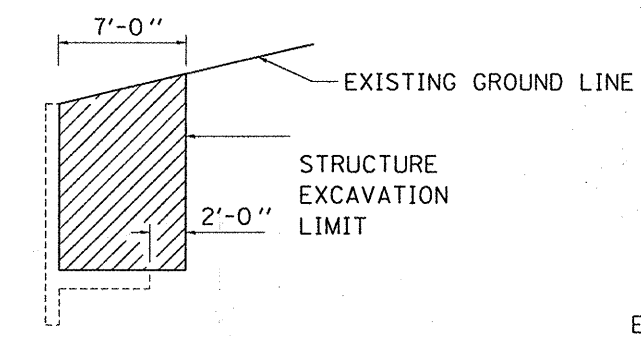
STATE OF ILLINOIS DEPARTMENT OF TRANSPORTATION

BORING LOGS S.N. 050-2019 SCALE: SHEET NO. 3 OF 9 SHEETS STA. TO STA.

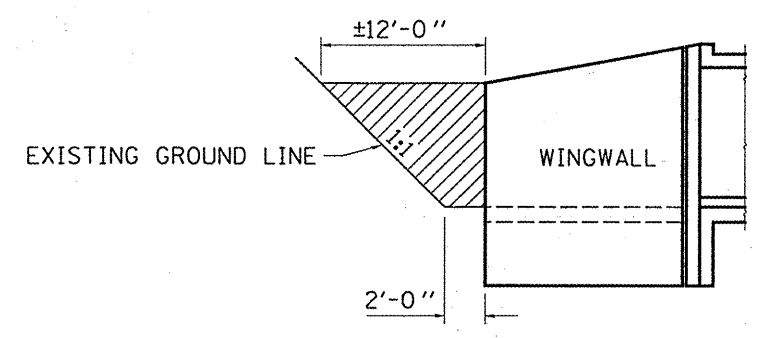
Table with columns: F.A.P. RTE., SECTION, COUNTY, TOTAL SHEETS, SHEET NO., CONTRACT NO. 66867.



PLAN



TYPICAL SECTION



EXCAVATION AT END OF WING

**BILL OF MATERIALS**

LOCATION	STRUCTURE EXCAVATION	FURNISHED EXCAVATION
	CU YD	CU YD
NW WINGWALL	26.2	26.2
SW WINGWALL	48.1	48.1
NE WINGWALL	26.2	26.2
NW WINGWALL	48.1	48.1
TOTAL	148.6	148.6

FILE NAME =	USER NAME = #USER#	DESIGNED - RON WOODSHANK	REVISED -
#FILE#		DRAWN - RON WOODSHANK	REVISED -
	PLOT SCALE = #SCALE#	CHECKED -	REVISED -
	PLOT DATE = #DATE#	DATE - 08/21/2008	REVISED -

**STATE OF ILLINOIS  
DEPARTMENT OF TRANSPORTATION**

**STRUCTURE EXCAVATION DETAILS  
S.N. 050-2019**

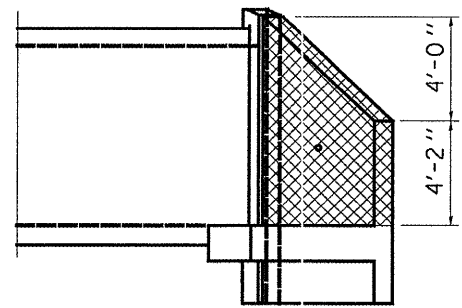
F.A.P. RTE.	SECTION	COUNTY	TOTAL SHEETS	SHEET NO.
311	(58-11)	LASALLE	13	8
FED. ROAD DIST. NO. ILLINOIS			CONTRACT NO. 66867	



EXISTING HORIZONTAL & VERTICAL REINFORCEMENT SHALL BE REMOVED

EXISTING VERTICAL REINFORCEMENT SHALL BE CUT OFF FLUSH WITH CONCRETE FOOTING

SHOWING REINFORCEMENT

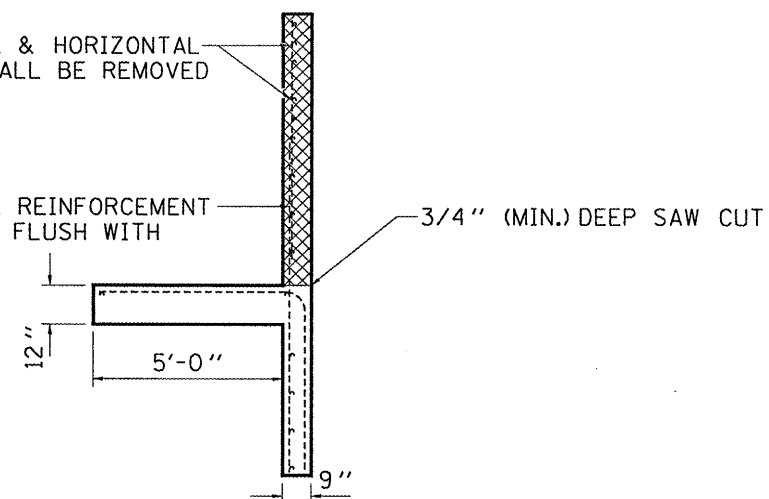


SHOWING OUTLINE

ELEVATION

EXISTING VERTICAL & HORIZONTAL REINFORCEMENT SHALL BE REMOVED

EXISTING VERTICAL REINFORCEMENT SHALL BE CUT OFF FLUSH WITH CONCRETE FOOTING



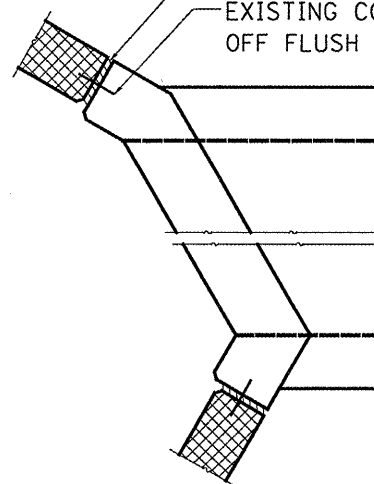
SECTION A-A

LEGEND

CONCRETE REMOVAL

REMOVE EXISTING 1/2" PREFORMED JOINT FILLER (TYP.)

EXISTING COPPER WATER SEAL TO BE CUT OFF FLUSH WITH EXISTING WALL (TYP.)



CORNER DETAIL  
REMOVAL TO BE INCLUDED WITH "CONCRETE REMOVAL"



PLAN

BILL OF MATERIALS

LOCATION	CONCRETE REMOVAL
	CU YD
NW WING	1.3
SW WING	4
NE WING	1.3
SE WING	4
TOTAL	10.6

FILE NAME =	USER NAME = #USER#	DESIGNED - RON WOODSHANK	REVISED -
#FILE#		DRAWN - RON WOODSHANK	REVISED -
	PLOT SCALE = #SCALE#	CHECKED -	REVISED -
	PLOT DATE = #DATE#	DATE - 08/21/2008	REVISED -

STATE OF ILLINOIS  
DEPARTMENT OF TRANSPORTATION

CONCRETE REMOVAL DETAILS  
S.N. 050-2019

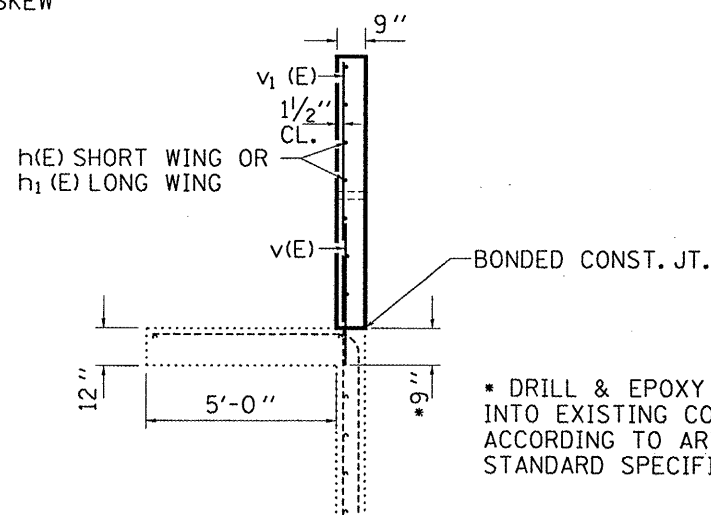
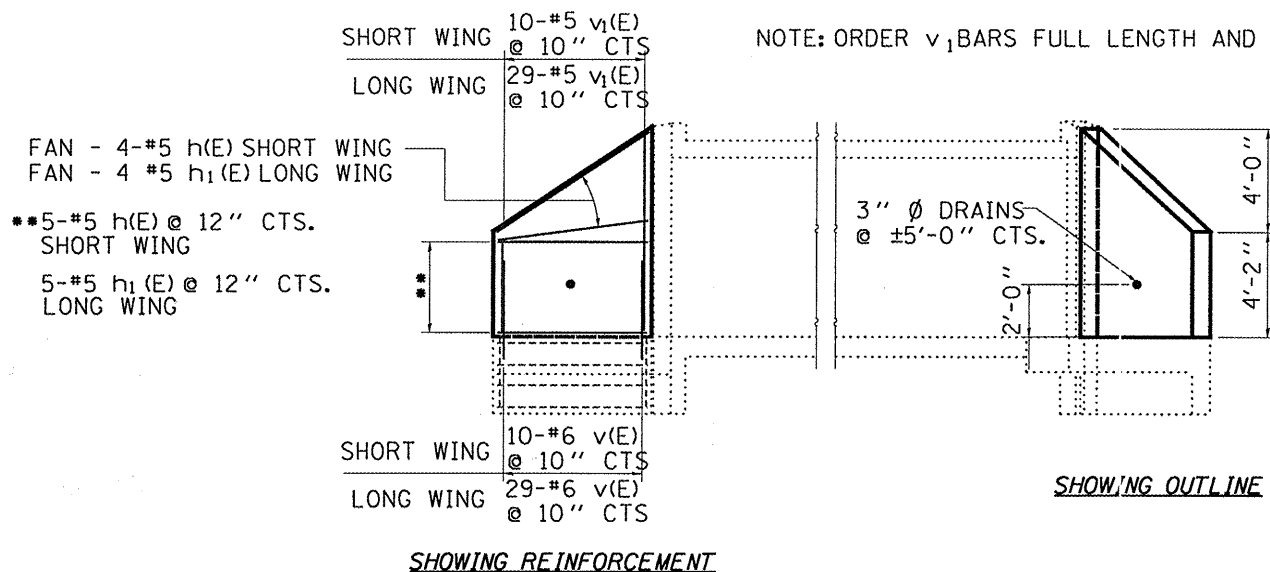
F.A.P. RTE. 311	SECTION (SB-1)1	COUNTY LASALLE	TOTAL SHEETS 13	SHEET NO. 9
CONTRACT NO. 66867			ILLINOIS	

SCALE: SHEET NO. 5 OF 9 SHEETS STA. TO STA.

**CONCRETE TABLE**

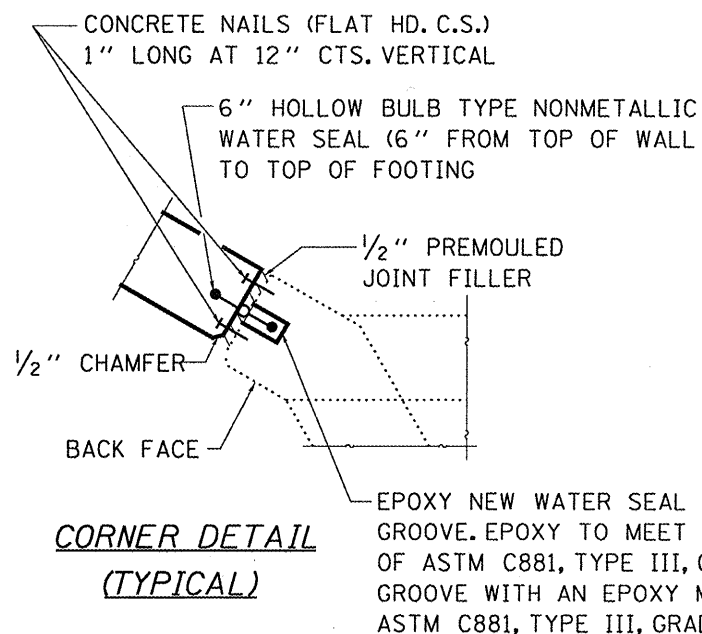
LOCATION	CONCRETE BOX CULVERT CU YD
NW WING	1.3
SW WING	4
NE WING	1.3
SE WING	4

NOTE: ORDER  $v_1$  BARS FULL LENGTH AND CUT TO FIT SKEW



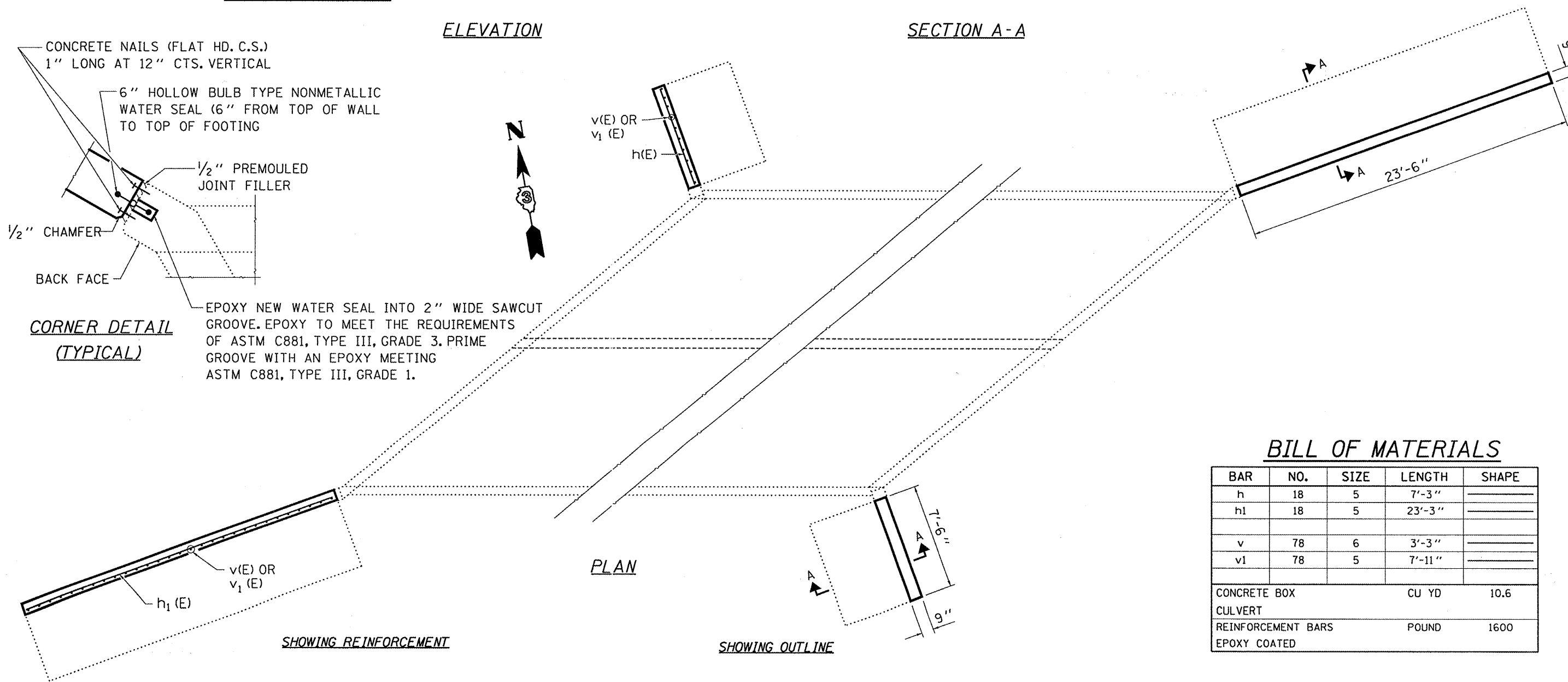
**ELEVATION**

**SECTION A-A**



**CORNER DETAIL (TYPICAL)**

EPOXY NEW WATER SEAL INTO 2" WIDE SAWCUT GROOVE. EPOXY TO MEET THE REQUIREMENTS OF ASTM C881, TYPE III, GRADE 3. PRIME GROOVE WITH AN EPOXY MEETING ASTM C881, TYPE III, GRADE 1.



**PLAN**

**BILL OF MATERIALS**

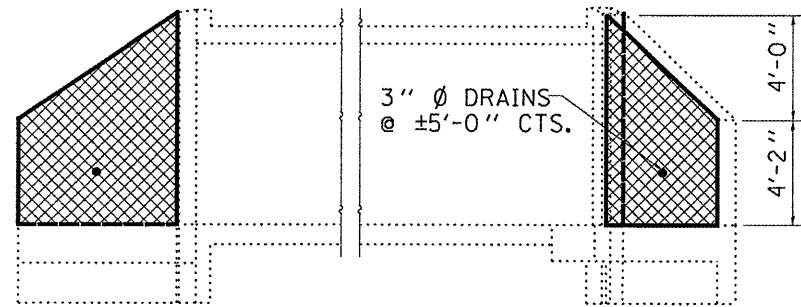
BAR	NO.	SIZE	LENGTH	SHAPE
h	18	5	7'-3"	_____
h1	18	5	23'-3"	_____
v	78	6	3'-3"	_____
v1	78	5	7'-11"	_____
CONCRETE BOX CULVERT			CU YD	10.6
REINFORCEMENT BARS			POUND	1600
EPOXY COATED				

FILE NAME =	USER NAME = #USER#	DESIGNED - RON WOODSHANK	REVISED -
#FILE#		DRAWN - RON WOODSHANK	REVISED -
	PLOT SCALE = #SCALE#	CHECKED -	REVISED -
	PLOT DATE = #DATE#	DATE - 08/21/2008	REVISED -

STATE OF ILLINOIS  
DEPARTMENT OF TRANSPORTATION

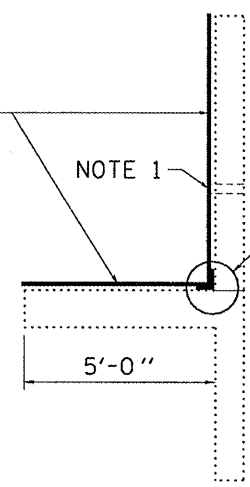
CONCRETE BOX CULVERT DETAILS  
S.N. 050-2019

F.A.P. RTE. 311	SECTION (SB-11)	COUNTY LASALLE	TOTAL SHEETS 13	SHEET NO. 10
SCALE: _____			CONTRACT NO. 66867	
SHEET NO. 6 OF 9 SHEETS		STA. _____ TO STA. _____		FED. ROAD DIST. NO. ILLINOIS



ELEVATION

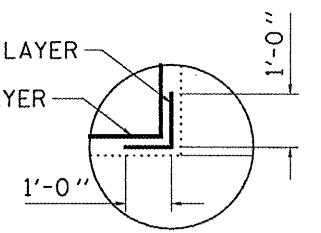
SHEET WATERPROOFING MEMBRANE SYSTEM



SECTION A-A

NOTE 1: WATERPROOFING MEMBRANE SHALL BE CUT AND EDGES SEALED AT DRAIN OPENING

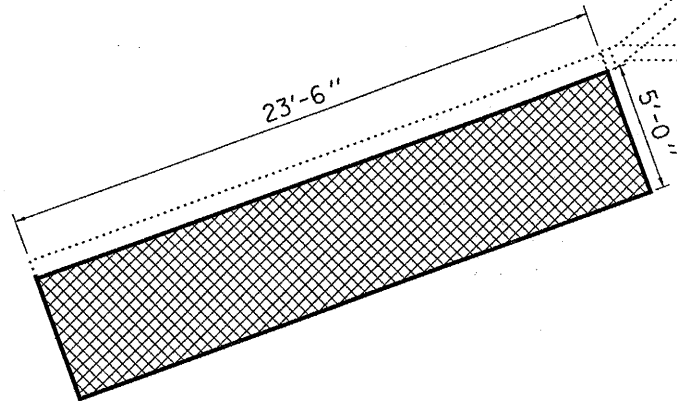
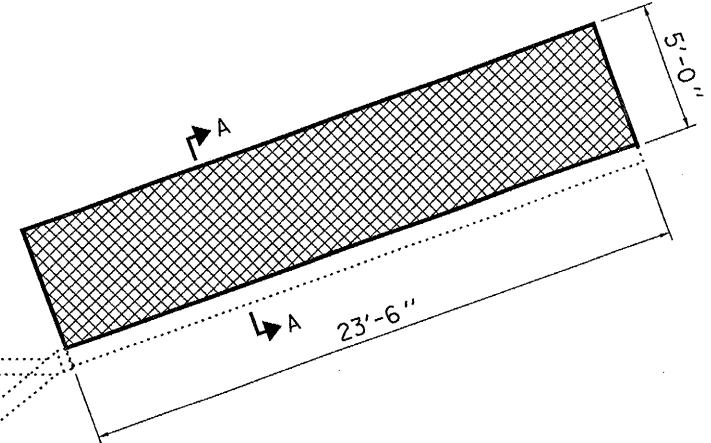
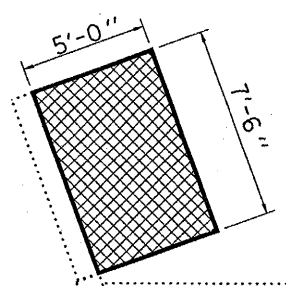
MEMBRANE 1st LAYER  
MEMBRANE 2nd LAYER



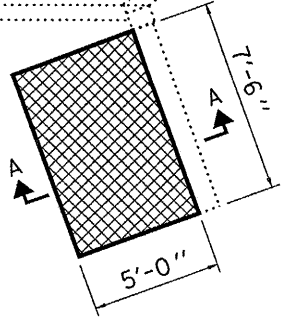
DETAIL "A"

LEGEND

 SHEET WATERPROOFING MEMBRANE SYSTEM



PLAN



BILL OF MATERIALS

LOCATION	SHEET WATERPROOFING MEMBRANE SYSTEM
	SQ YD
NW WING	11
SW WING	34
NE WING	11
SE WING	34
TOTAL	90

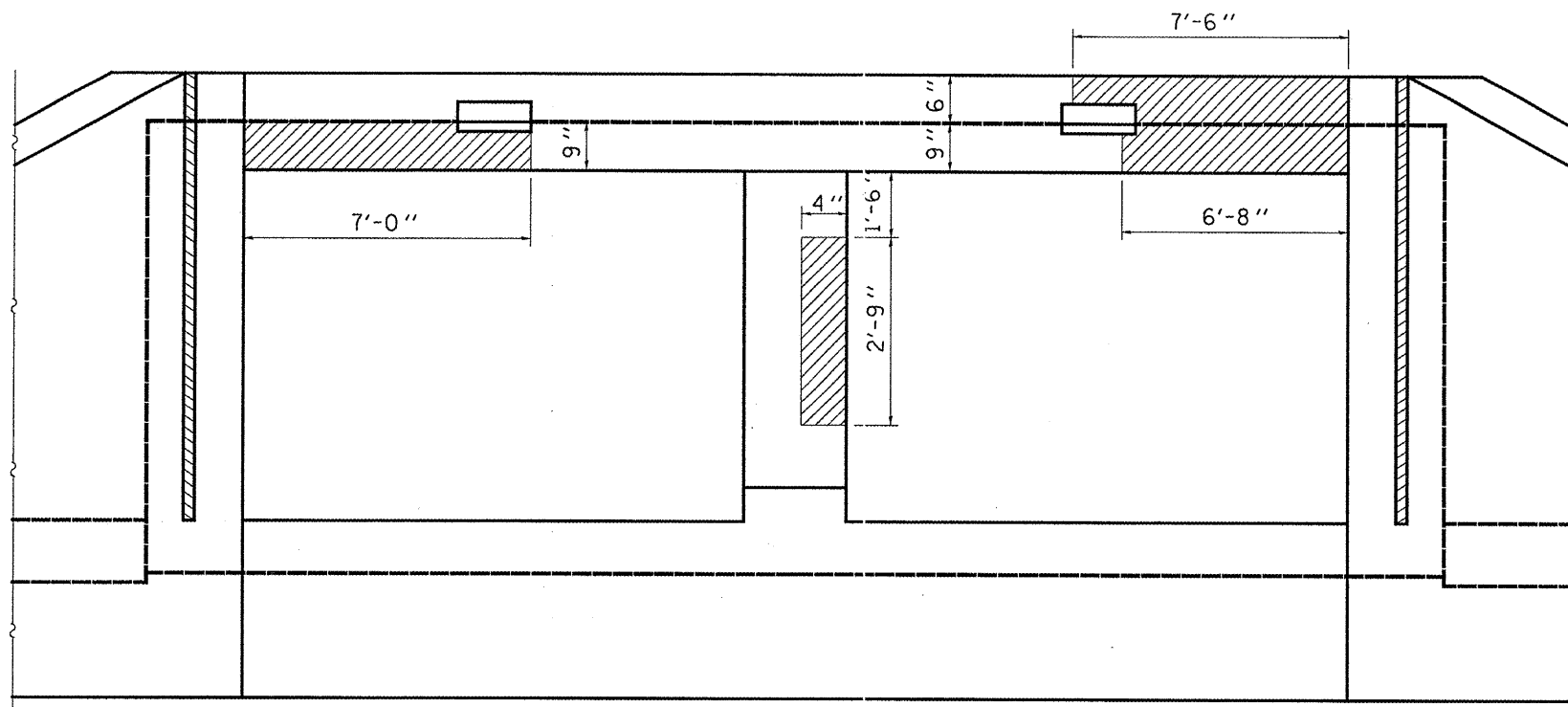
FILE NAME =	USER NAME = #USER#	DESIGNED - RON WOODSHANK	REVISED -
#FILE#		DRAWN - RON WOODSHANK	REVISED -
	PLOT SCALE = #SCALE#	CHECKED -	REVISED -
	PLOT DATE = #DATE#	DATE - 08/21/2008	REVISED -

STATE OF ILLINOIS  
DEPARTMENT OF TRANSPORTATION

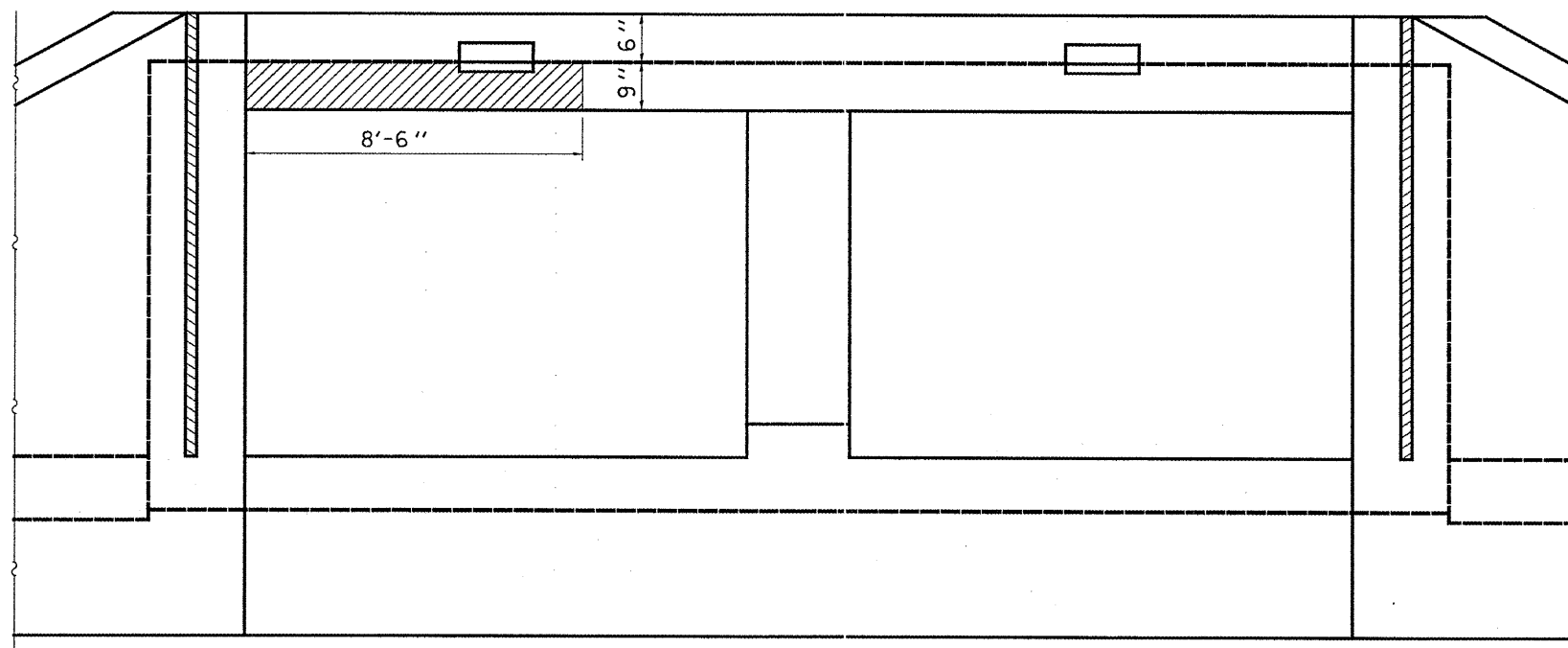
WATERPROOFING DETAILS  
S.N. 050-2019

F.A.P. RTE.	SECTION	COUNTY	TOTAL SHEETS	SHEET NO.
311	(5B-1)I	LASALLE	13	11
FED. ROAD DIST. NO.			ILLINOIS	
			CONTRACT NO. 66867	

SCALE: SHEET NO. 7 OF 9 SHEETS STA. TO STA.



WEST FACE



EAST FACE

**GENERAL NOTES**

LOCATIONS AND DIMENSIONS SHOWN ARE APPROXIMATE. THE CONTRACTOR SHALL SOUND THE EXISTING CONCRETE FOR EXACT DIMENSIONS BEFORE BEGINNING REPAIR OPERATIONS.

SEE THE SPECIAL PROVISION FOR "STRUCTURAL REPAIR OF CONCRETE" FOR REPAIR METHODS AND PROCEDURES.

MISCELLANEOUS QUANTITY FOR STRUCTURAL REPAIR OF CONCRETE HAS BEEN INCLUDED TO BE USED AT THE ENGINEER'S DIRECTION.

REINFORCEMENT BARS SHALL CONFORM TO THE REQUIREMENTS OF ASTM A 706 GR 60. SEE SPECIAL PROVISIONS.

REINFORCEMENT BARS DESIGNATED (E) SHALL BE EPOXY COATED.

**BILL OF MATERIALS**

LOCATION	STRUCTURAL REPAIR OF CONCRETE
	SQ FT
WEST FACE	15
EAST FACE	6
MISCELLANEOUS	10
TOTAL	31

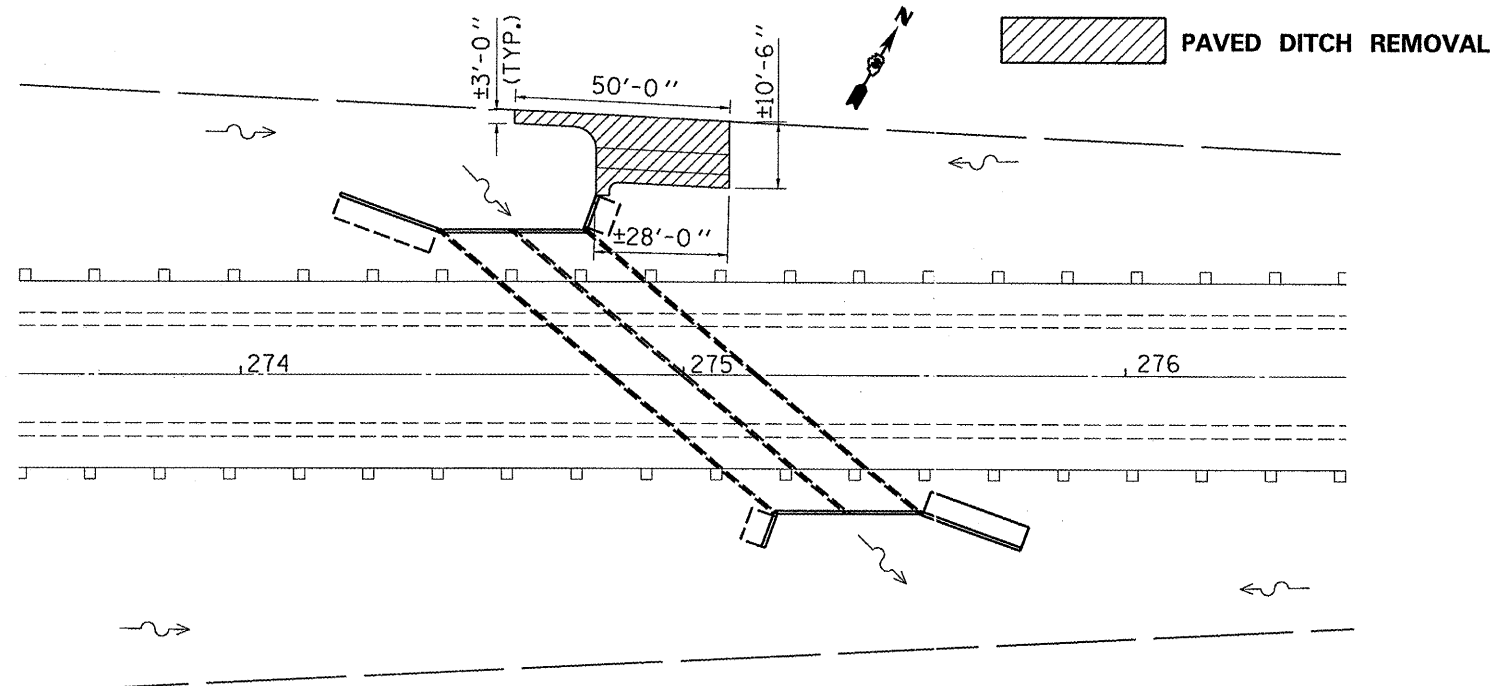
FILE NAME =	USER NAME = *USER*	DESIGNED - RON WOODSHANK	REVISED -
*FILEL*		DRAWN - RON WOODSHANK	REVISED -
	PLOT SCALE = *SCALE*	CHECKED -	REVISED -
	PLOT DATE = *DATE*	DATE - 08/21/2008	REVISED -

STATE OF ILLINOIS  
DEPARTMENT OF TRANSPORTATION

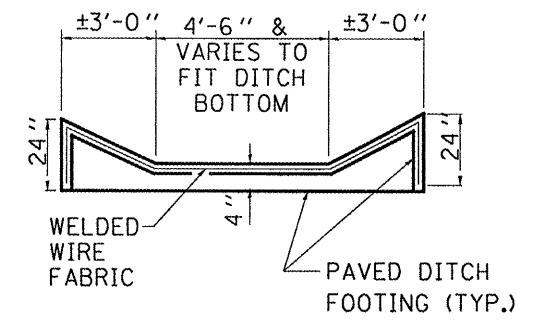
STRUCTURAL REPAIR OF CONCRETE  
S.N. 050-2019

F.A.P. RTE.	SECTION	COUNTY	TOTAL SHEETS	SHEET NO.
311	(5B-11)	LASALLE	13	12
FED. ROAD DIST. NO. [ILLINOIS]			CONTRACT NO. 66867	

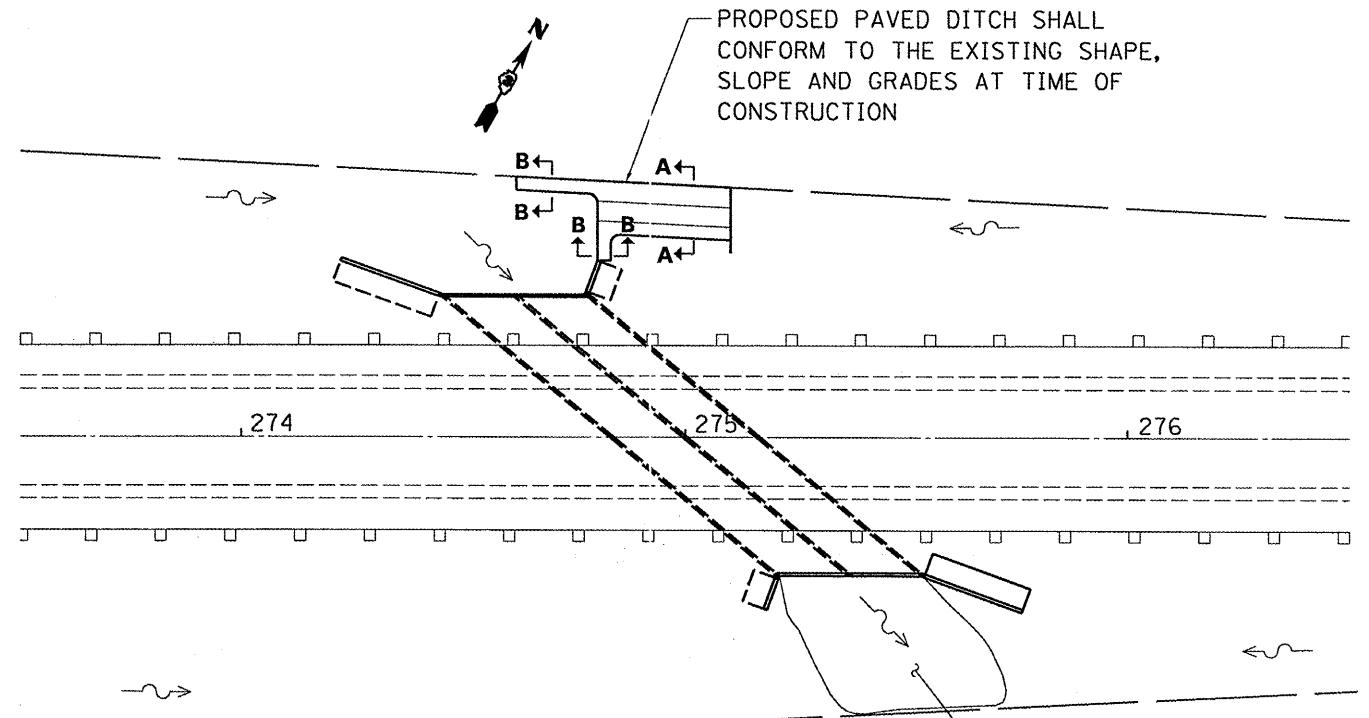
SCALE: SHEET NO. 8 OF 9 SHEETS STA. TO STA.



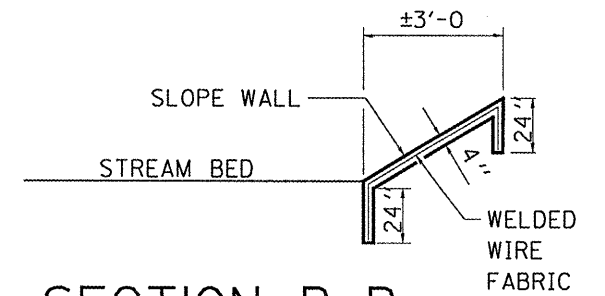
**EXISTING PLAN**



**SECTION A-A**



**PROPOSED PLAN**



**SECTION B-B**

**BILL OF MATERIALS**

LOCATION	PAVED DITCH REMOVAL & REPLACEMENT	CHANNEL EXCAVATION
	SQ YD	CU YD
WEST END	58	
EAST END		50
TOTAL	58	50

EXISTING CHANNEL SHALL BE CLEANED TO PROMOTE POSITIVE DRAINAGE

FILE NAME =	USER NAME = #USER*	DESIGNED - RON WOODSHANK	REVISED -	<b>STATE OF ILLINOIS DEPARTMENT OF TRANSPORTATION</b>	<b>EROSION REPAIR DETAILS S.N. 050-2019</b>	F.A.P. RTE.	SECTION	COUNTY	TOTAL SHEETS	SHEET NO.	
#FILE#		DRAWN - RON WOODSHANK	REVISED -			311	(58-11)	LASALLE	13	13	
PLOT SCALE = #SCALE*		CHECKED -	REVISED -			CONTRACT NO. 66867					
PLOT DATE = #DATE*		DATE - 08/21/2008	REVISED -								