

INDEX OF SHEETS

1. COVER SHEET
2. GENERAL NOTES
3. SUMMARY OF QUANTITIES
4. GENERAL SITE PLAN
5. DETAIL "A"
6. DETAIL "B"
7. MISCELLANEOUS DETAILS

STANDARDS

- | | |
|-----------|--|
| 000001-05 | STANDARD SYMBOLS, ABBREVIATIONS AND PATTERNS |
| 602401-02 | MANHOLE, TYPE A |
| 602701-02 | MANHOLE STEPS |
| 604001-03 | FRAME AND LIDS, TYPE 1 |
| 701001-02 | OFF-ROAD OPERATIONS 2L, 2W, MORE THAN 4.5 m (15') AWAY |
| 701006-03 | OFF-ROAD OPERATIONS 2L, 2W, 4.5 m (15') TO 600 mm (24") FROM PAVEMENT EDGE |
| 701201-03 | LANE CLOSURE, 2L, 2W, DAY ONLY, FOR SPEEDS Δ 45 MPH |
| 701301-03 | LANE CLOSURE, 2L, 2W, SHORT TIME OPERATIONS |
| 701801-04 | LANE CLOSURE, MULTILANE 1W OR 2W CROSSWALK OR SIDEWALK CLOSURE |
| 701901-01 | TRAFFIC CONTROL DEVICES |

STATE OF ILLINOIS
DEPARTMENT OF TRANSPORTATION
DIVISION OF HIGHWAYS

PROPOSED
HIGHWAY PLANS

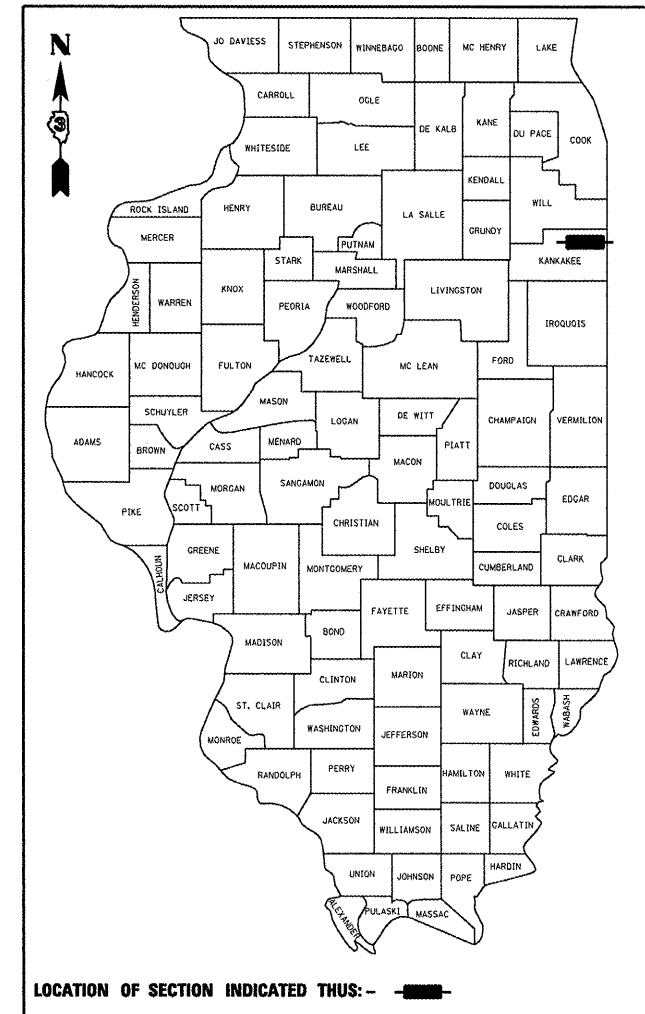
FAP ROUTE 635 (IL 114)
SECTION (105)I

STORM & SANITARY SEWER REPAIR
KANKAKEE COUNTY

C-93-018-09

F.A.P. RTE.	SECTION	COUNTY	TOTAL SHEETS	SHEET NO.
635	(105)I	KANKAKEE	1	7
FED. ROAD DIST. NO.	ILLINOIS	CONTRACT NO. 66871		

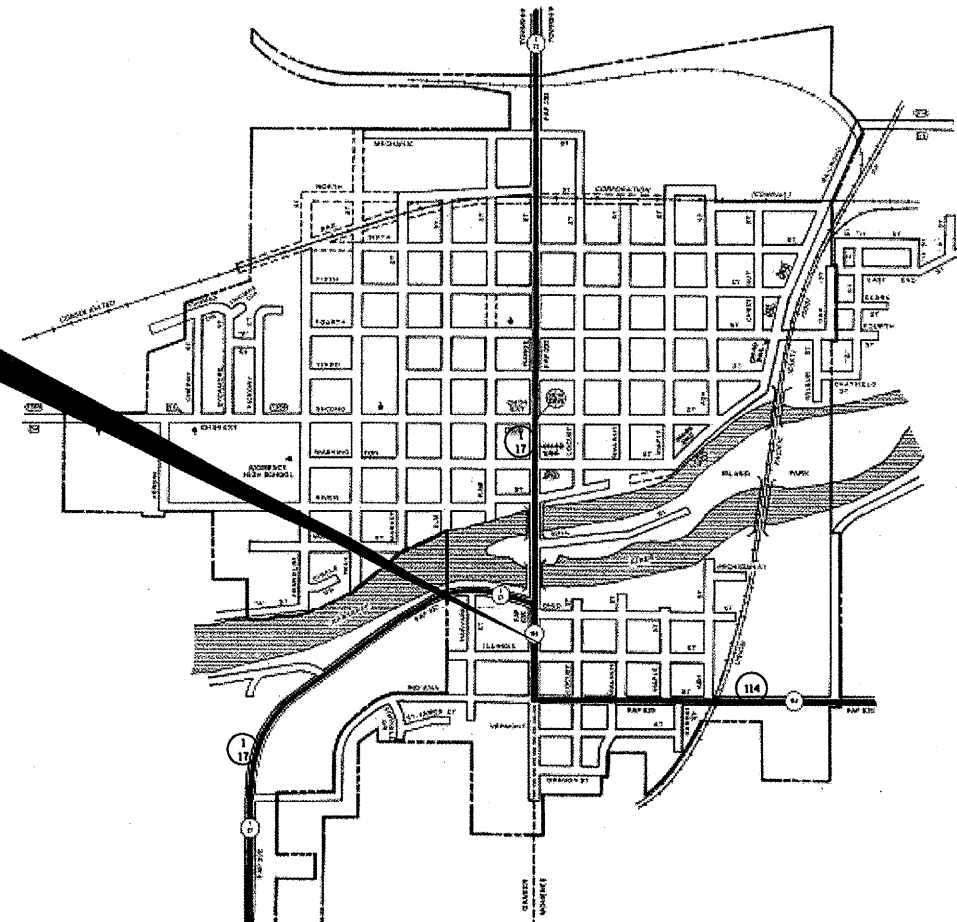
D-93-002-09



LOCATION OF SECTION INDICATED THUS: - [black bar] -

FUNCTIONAL CLASSIFICATION
 URBAN - MINOR ARTERIAL
 F.A.P. ROUTE 635 (IL 114)
 2007 ADT = 10600
 P.V = 79.7% M.U. = 8.5% S.U. = 11.8%

PROJECT LOCATION
 PRIVATE RESIDENCE (STA. 105+40 LT.) AT THE
 NORTHEAST CORNER OF GLADIOLA STREET
 (IL 114) AND ILLINOIS STREET



LOCATION MAP
 NOT TO SCALE
 POINT LOCATION

J.U.L.I.E.
 JOINT UTILITY LOCATION INFORMATION FOR EXCAVATION
 1-800-892-0123
 OR 811

PROJECT ENGINEER: JOE KANNEL
 UNIT CHIEF: RON WOODSHANK

CONTRACT NO. 66871

STATE OF ILLINOIS
 DEPARTMENT OF TRANSPORTATION
 DIVISION OF HIGHWAYS

SUBMITTED 10-29 2008
George F. Ryan BAA
 DEPUTY DIRECTOR OF HIGHWAYS, REGION ENGINEER
 December 5, 2008
Eric E. Harn
 INTERIM ENGINEER OF DESIGN AND ENVIRONMENT
 December 5, 2008
Christine M. Reed
 DIRECTOR OF HIGHWAYS, CHIEF ENGINEER

PRINTED BY THE AUTHORITY
OF THE STATE OF ILLINOIS

GENERAL NOTES

PLAN DIMENSIONS AND DETAILS RELATIVE TO THE PLANS ARE SUBJECT TO ROUTINE VARIATIONS. THE CONTRACTOR SHALL FIELD VERIFY EXISTING DIMENSIONS AND DETAILS AFFECTING NEW CONSTRUCTION AND MAKE NECESSARY APPROVED ADJUSTMENTS PRIOR TO CONSTRUCTION OR ORDERING OF MATERIALS. SUCH VARIATIONS SHALL NOT BE CAUSE FOR ADDITIONAL COMPENSATION FOR A CHANGE IN THE SCOPE OF THE WORK. HOWEVER, THE CONTRACTOR WILL BE PAID FOR THE QUANTITY FURNISHED BASED UPON THE UNIT BID PRICE FOR THE WORK.

THE COST OF ANY SAW CUTS MADE TO COMPLETE THE WORK AS DESCRIBED IN PLAN DETAILS, UNLESS OTHERWISE NOTED SHALL NOT BE PAID FOR SEPARATELY BUT SHALL BE INCLUDED WITH THE VARIOUS PAY REMOVAL PAY ITEMS INVOLVED.

BEFORE ORDERING SEWER PIPES, THE CONTRACTOR SHALL CONSULT THE ENGINEER FOR EXACT LENGTHS.

FOR STABILIZATION, ALL TYPE III BARRICADES SHALL REQUIRE A MINIMUM OF FOUR SAND BAGS PER BARRICADE.

SODDING SHALL NOT BE PERMITTED AT ANY TIME WHEN THE GROUND IS FROZEN, WET, OR IN AN UNTILLABLE CONDITION. LOCATIONS TO BE SEEDED WILL BE DETERMINED BY THE ENGINEER.

THE FINISHED EARTHWORK SHALL HAVE TOPSOIL FURNISHED AND PLACED (4" MIN. DEPTH) ACCORDING TO SECTION 211 OF THE STANDARD SPECIFICATIONS. THE TOPSOIL FURNISHED AND PLACED SHALL NOT BE PAID FOR SEPARATELY BUT SHALL BE INCLUDED IN THE COST OF THE RELATED EXCAVATION ITEMS.

ALL ELEVATIONS REFERRING TO U.S.G.S. MEAN SEA LEVEL DATUM.

ABANDONED UNDERGROUND UTILITIES THAT CONFLICT WITH CONSTRUCTION SHALL BE DISPOSED OF OUTSIDE THE LIMITS OF THE RIGHT OF WAY ACCORDING TO ARTICLE 202.03 OF THE STANDARD SPECIFICATIONS AND AS DIRECTED BY THE ENGINEER. THIS WORK WILL NOT BE PAID FOR SEPARATELY, BUT SHALL BE INCLUDED IN THE COST OF EARTH EXCAVATION.

ANY REFERENCE TO A STANDARD IN THESE PLANS SHALL BE INTERPRETED TO MEAN THE EDITION AS INDICATED BY THE SUBNUMBER SHOWN IN THE LIST OF STANDARDS OR THE COPY INCLUDED IN THESE PLANS.

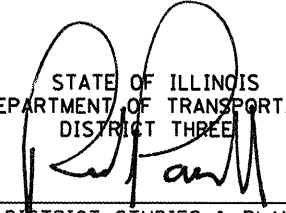
THE WORK REQUIRED TO CONNECT ANY SEWER PIPE TO AN EXISTING OR NEW DRAINAGE STRUCTURE OR PIPE WILL NOT BE PAID FOR SEPARATELY, BUT SHALL BE CONSIDERED AS INCLUDED IN THE CONTRACT UNIT PRICE BID FOR THE SEWER ITEMS.

THE CONTRACTOR SHALL CONTACT JULIE AT LEAST 48 HOURS PRIOR TO EXCAVATION TO DETERMINE WHICH UTILITIES ARE IN THE AREA.

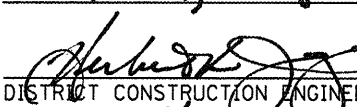
THE FOLLOWING RATES OF APPLICATION HAVE BEEN USED IN CALCULATING PLAN QUANTITIES:


GRANULAR MATERIALS	2.05	TONS / CU YD
--------------------	------	--------------

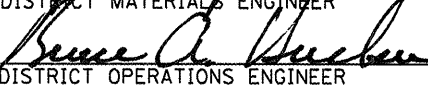
STATE OF ILLINOIS
DEPARTMENT OF TRANSPORTATION
DISTRICT THREE

PREPARED BY: 
DISTRICT STUDIES & PLANS ENGINEER

DATE: OCT 27, 2008

EXAMINED BY: 
DISTRICT CONSTRUCTION ENGINEER


DISTRICT MATERIALS ENGINEER


DISTRICT OPERATIONS ENGINEER

FILE NAME =	USER NAME = woodshankr1	DESIGNED - RON WOODSHANK	REVISED -	STATE OF ILLINOIS DEPARTMENT OF TRANSPORTATION	GENERAL NOTES	F.A.P. RTE. =	SECTION	COUNTY	TOTAL SHEETS	SHEET NO.	
c:\pw\work\PW1001\WOODSHANKRL\dms43279	d366871-cm317-details.dgn	DRAWN - RON WOODSHANK	REVISED -			635	(105)	KANKAKEE	7	2	
	PLOT SCALE = 100.0000' / IN.	CHECKED -	REVISED -			CONTRACT NO. 66871					
	PLOT DATE = Oct 01, 2008 - 03:10:18 PM	DATE -	REVISED -			SCALE:	SHEET NO. 1 OF 1 SHEETS	FED. ROAD DIST. NO. ILLINOIS FED. AID PROJECT			

SUMMARY OF QUANTITIES

CONSTRUCTION CODE TYPE: Y007

URBAN
100% STATE
TOTAL
QUANTITY

CODE NO.	ITEM	UNIT	URBAN 100% STATE TOTAL QUANTITY
20800150	TRENCH BACKFILL	CU YD	21
* 25200100	SODDING	SQ YD	60
42400100	PORTLAND CEMENT CONCRETE SIDEWALK 4 INCH	SQ FT	165
44000600	SIDEWALK REMOVAL	SQ FT	165
44001700	COMBINATION CONCRETE CURB AND GUTTER REMOVAL AND REPLACEMENT	FOOT	5
55022200	STORM SEWERS, TYPE 2, REINFORCED CONCRETE CULVERT, STORM DRAIN, AND SEWER PIPE, CLASS III 30"	FOOT	16
55101400	STORM SEWER REMOVAL 30"	FOOT	20
60221100	MANHOLES, TYPE A, 5'-DIAMETER, TYPE 1 FRAME, CLOSED LID	EACH	1
67100100	MOBILIZATION	L SUM	1
70100450	TRAFFIC CONTROL AND PROTECTION, STANDARD 701201	L SUM	1
70102640	TRAFFIC CONTROL AND PROTECTION, STANDARD 701801	L SUM	1
X0487800	SANITARY SEWER REMOVAL 12"	FOOT	25
Z0057100	SANITARY SEWER 12"	FOOT	21

* SPECIALTY
ITEM

B.M. TOP NUT ON FIRE HYDRANT AT NORTHWEST CORNER OF
GLADIOLA STREET (IL 114) AND ILLINOIS STREET. ELEV. 100.00

SCALE

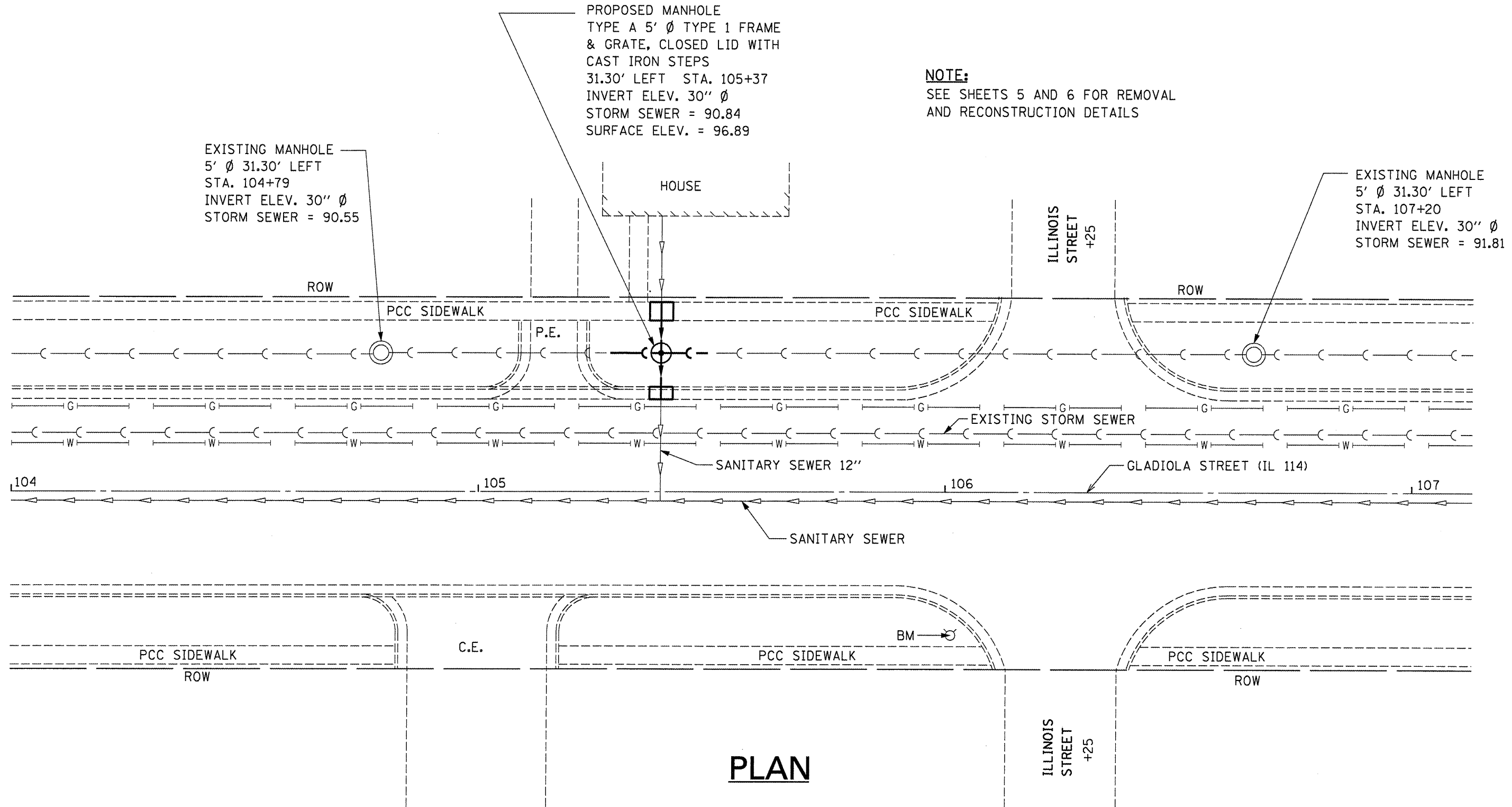


PROPOSED MANHOLE
TYPE A 5' Ø TYPE 1 FRAME
& GRATE, CLOSED LID WITH
CAST IRON STEPS
31.30' LEFT STA. 105+37
INVERT ELEV. 30" Ø
STORM SEWER = 90.84
SURFACE ELEV. = 96.89

NOTE:
SEE SHEETS 5 AND 6 FOR REMOVAL
AND RECONSTRUCTION DETAILS

EXISTING MANHOLE
5' Ø 31.30' LEFT
STA. 104+79
INVERT ELEV. 30" Ø
STORM SEWER = 90.55

EXISTING MANHOLE
5' Ø 31.30' LEFT
STA. 107+20
INVERT ELEV. 30" Ø
STORM SEWER = 91.81



PLAN

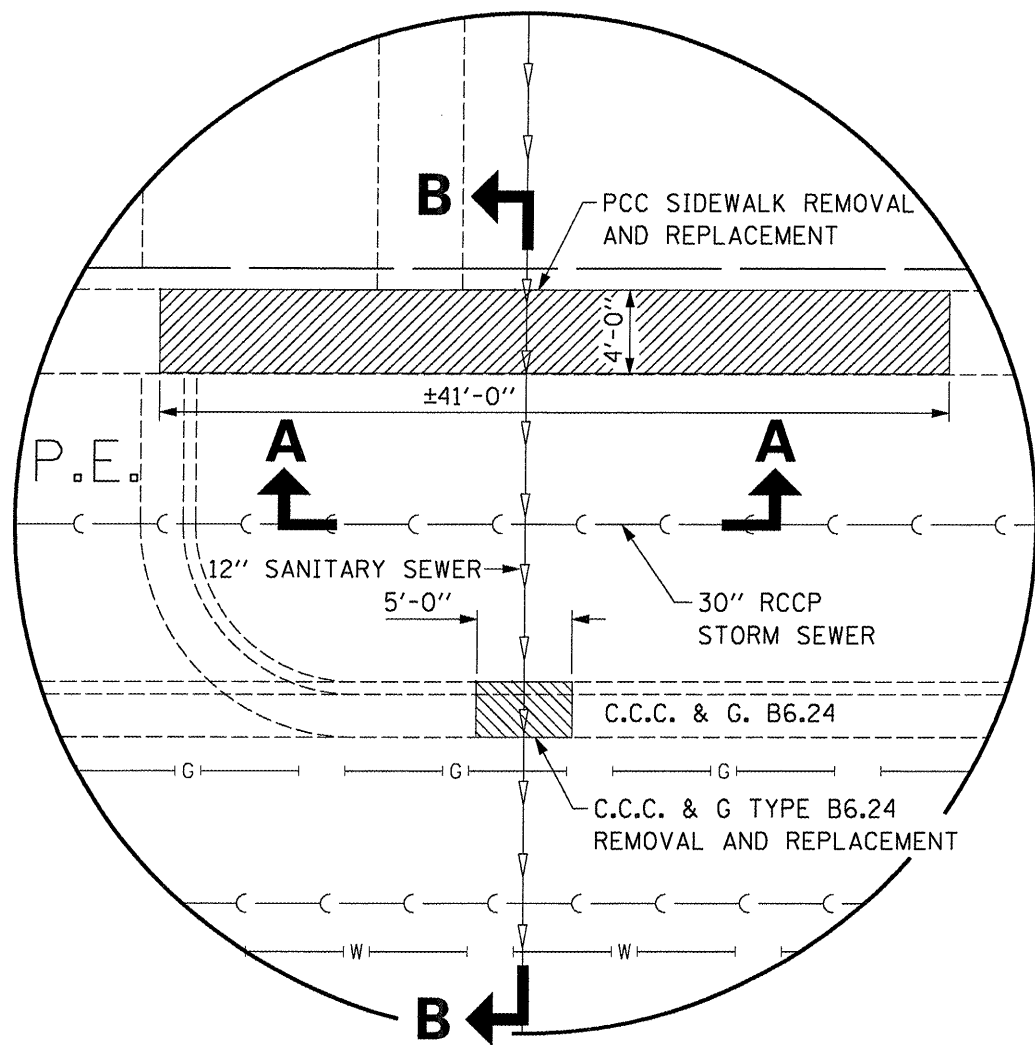
FILE NAME =	USER NAME = woodshankr1	DESIGNED -	REVISED -
c:\pwork\PWIDOT\WOODSHANKRL\dms43279	d366871-cm317-detail.dgn	DRAWN -	REVISED -
	PLOT SCALE = 100.0000' / IN.	CHECKED -	REVISED -
	PLOT DATE = Oct 01, 2008 - 03:10:29 PM	DATE -	REVISED -

STATE OF ILLINOIS
DEPARTMENT OF TRANSPORTATION

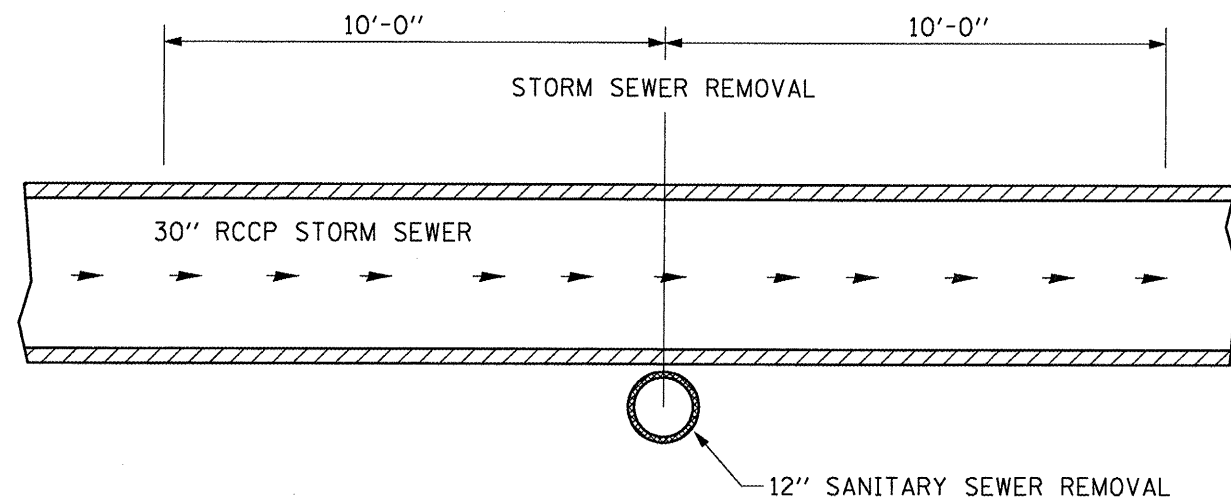
GENERAL PLAN

SCALE: SHEET NO. 1 OF 1 SHEETS

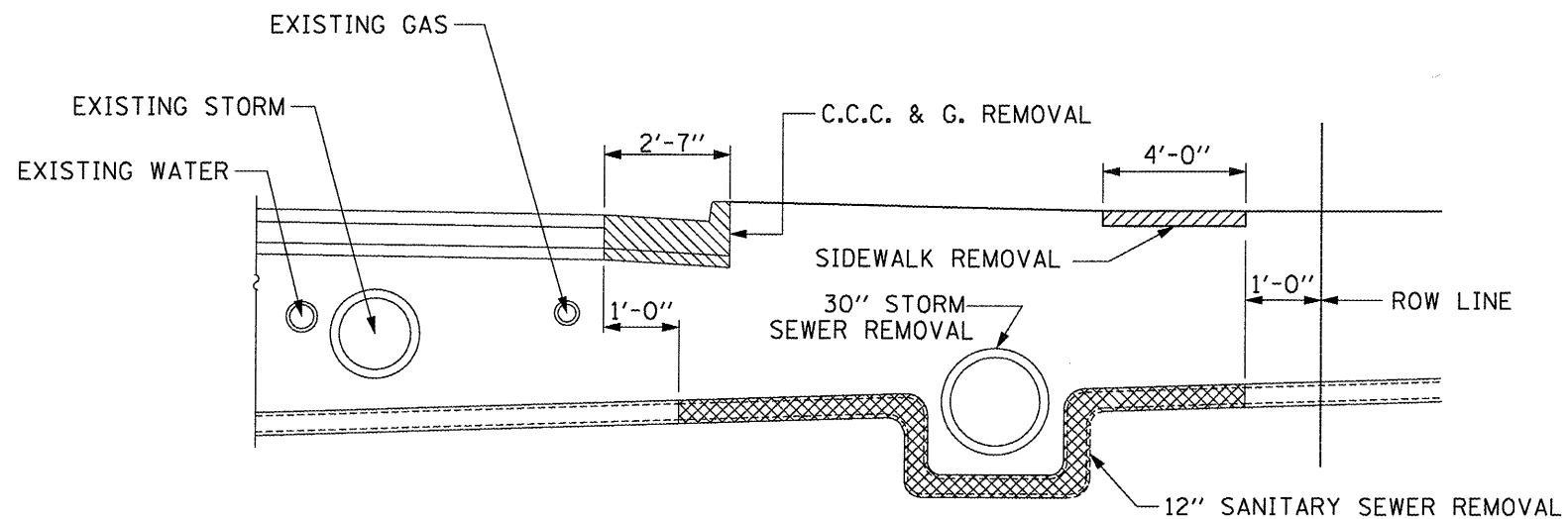
F.A.P. RTE.	SECTION	COUNTY	TOTAL SHEETS	SHEET NO.
635	(105)I	KANKAKEE	7	4
FED. ROAD DIST. NO.			ILLINOIS FED. AID PROJECT	
			CONTRACT NO. 66871	



DETAIL "A"



SECTION A-A



SECTION B-B

FILE NAME =	USER NAME = woodshankr1	DESIGNED -	REVISED -
c:\pwork\PW100T\WOODSHANKRL\dms43279	d366871-cm317-detail1.dgn	DRAWN -	REVISED -
	PLOT SCALE = 100.0000' / IN.	CHECKED -	REVISED -
	PLOT DATE = Oct 03, 2008 - 07:43:09 AM	DATE -	REVISED -

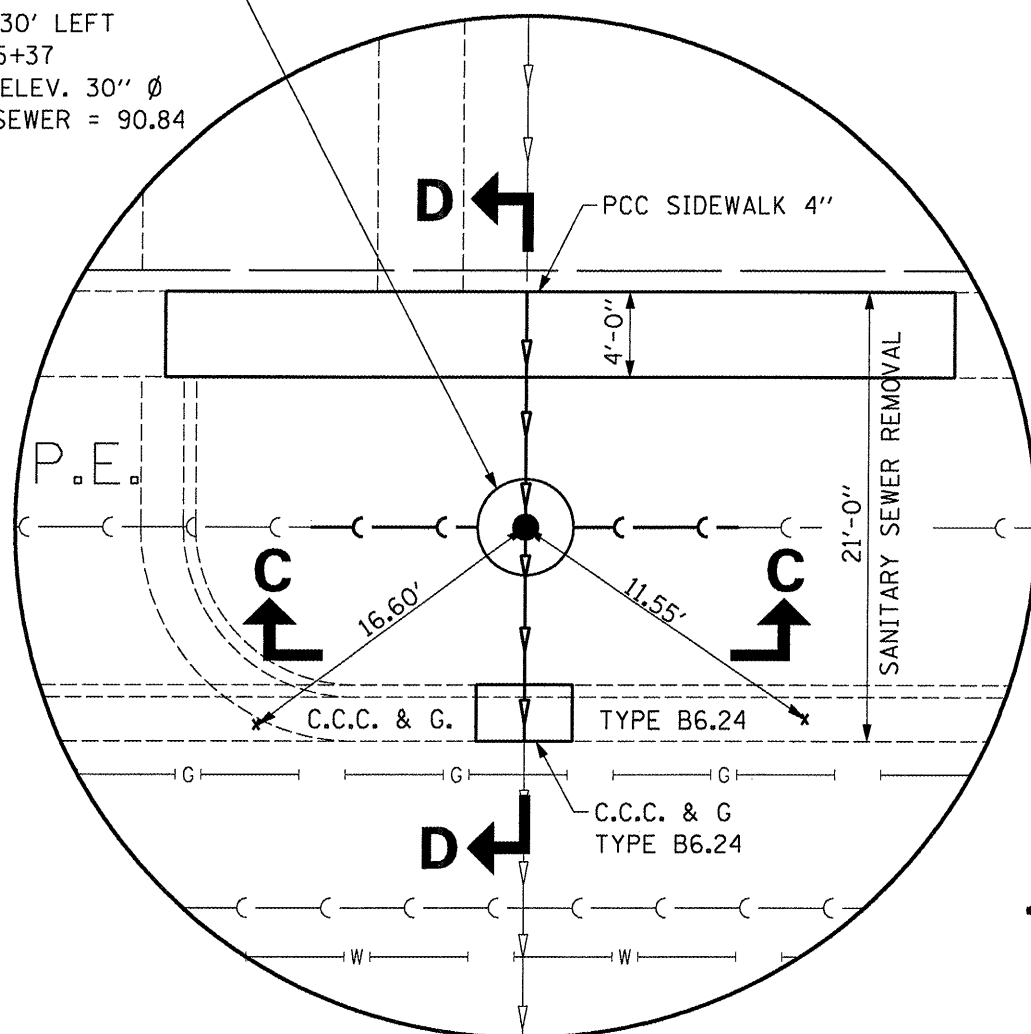
STATE OF ILLINOIS
DEPARTMENT OF TRANSPORTATION

DETAIL "A"

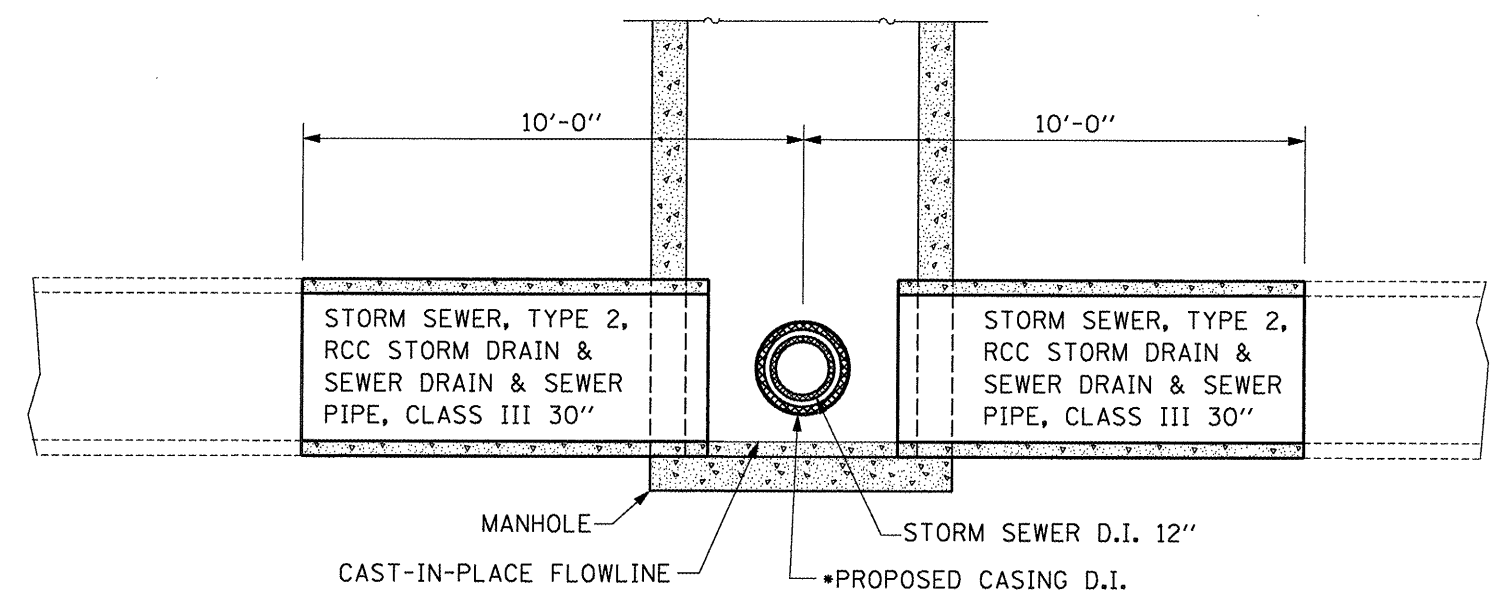
SCALE: SHEET NO. 1 OF 1 SHEETS

F.A.P. RTE. 635	SECTION (105)I	COUNTY KANKAKEE	TOTAL SHEETS 7	SHEET NO. 5
CONTRACT NO. 66871				
FED. ROAD DIST. NO. ILLINOIS FED. AID PROJECT				

PROPOSED
 MANHOLE TYPE A
 5' Ø 31.30' LEFT
 STA. 105+37
 INVERT ELEV. 30" Ø
 STORM SEWER = 90.84



DETAIL "B"

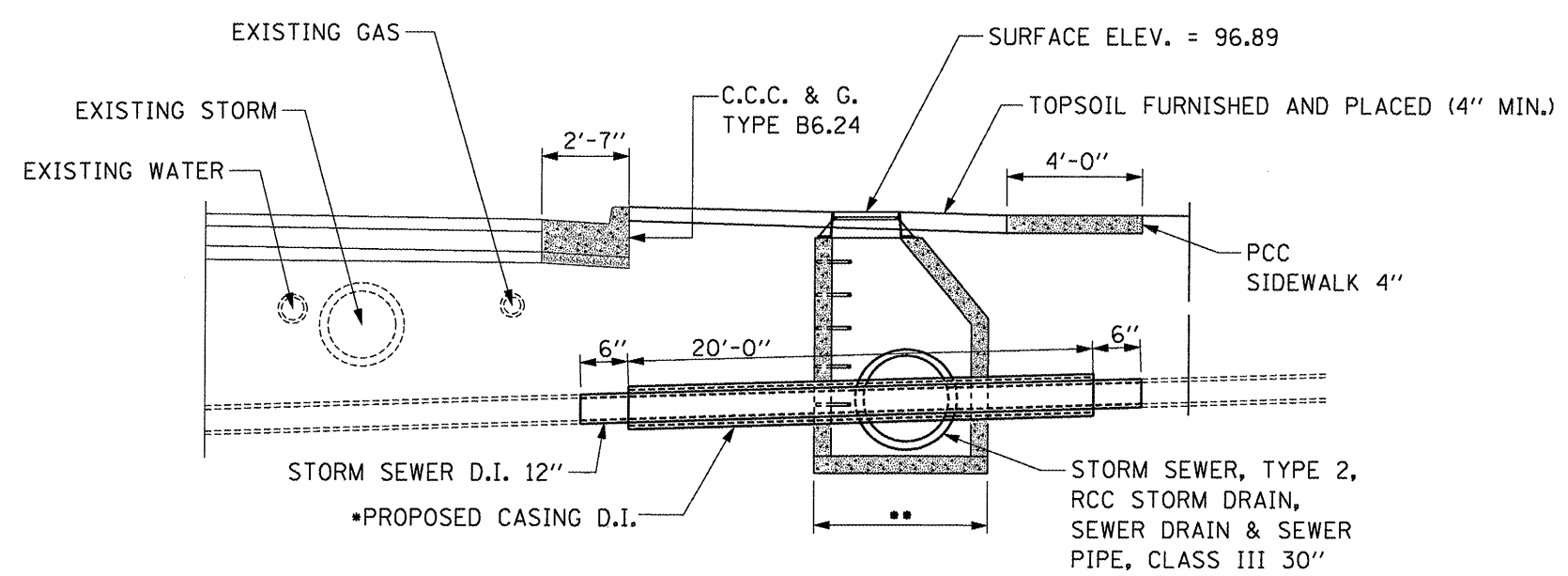


SECTION C-C

* CHISLED "X" IN GUTTER PAN

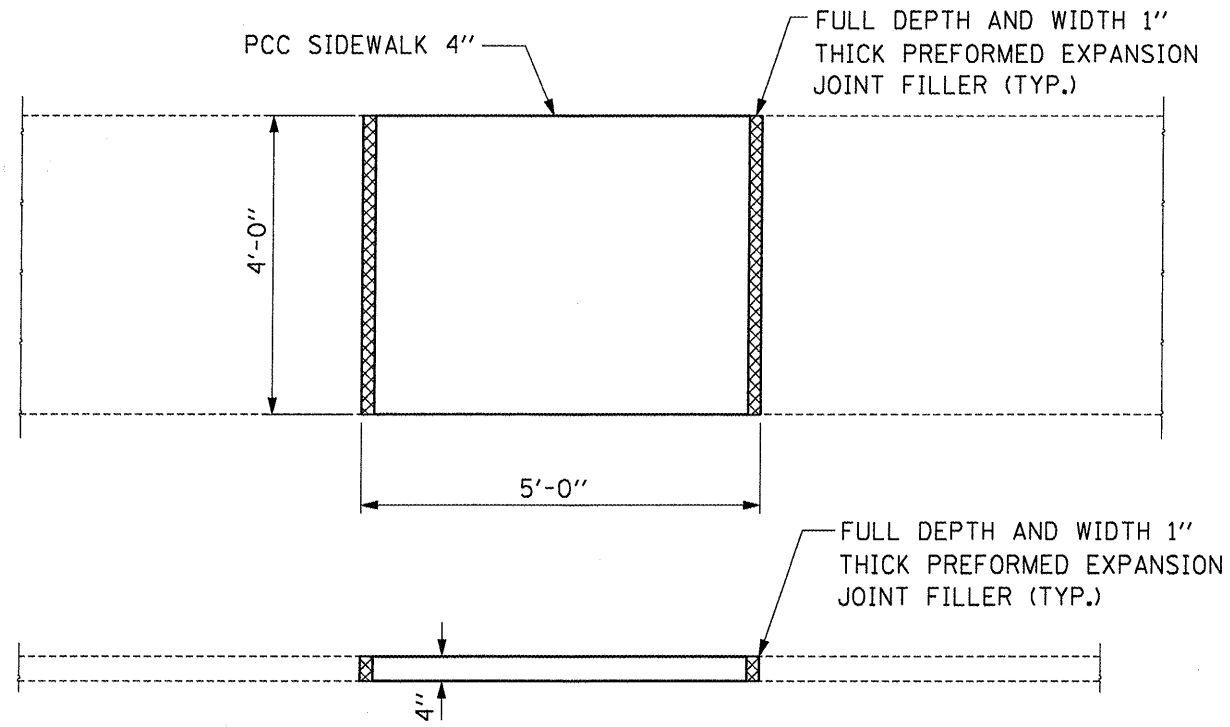
- CASING SHALL BE DUCTILE IRON WITH AN INSIDE DIAMETER 2" LARGER IN DIAMETER THAN ENCASED PIPE OUTSIDE DIAMETER WITH BOTH ENDS OF CASING SEALED
- NO JOINT CONNECTION SHALL BE ALLOWED IN THE SANITARY OR THE CASING INSIDE THE MANHOLE

NOTE:
 DIMENSIONS AND ELEVATIONS SHOWN MAY BE ADJUSTED TO FIT FIELD CONDITIONS AT TIME OF CONSTRUCTION

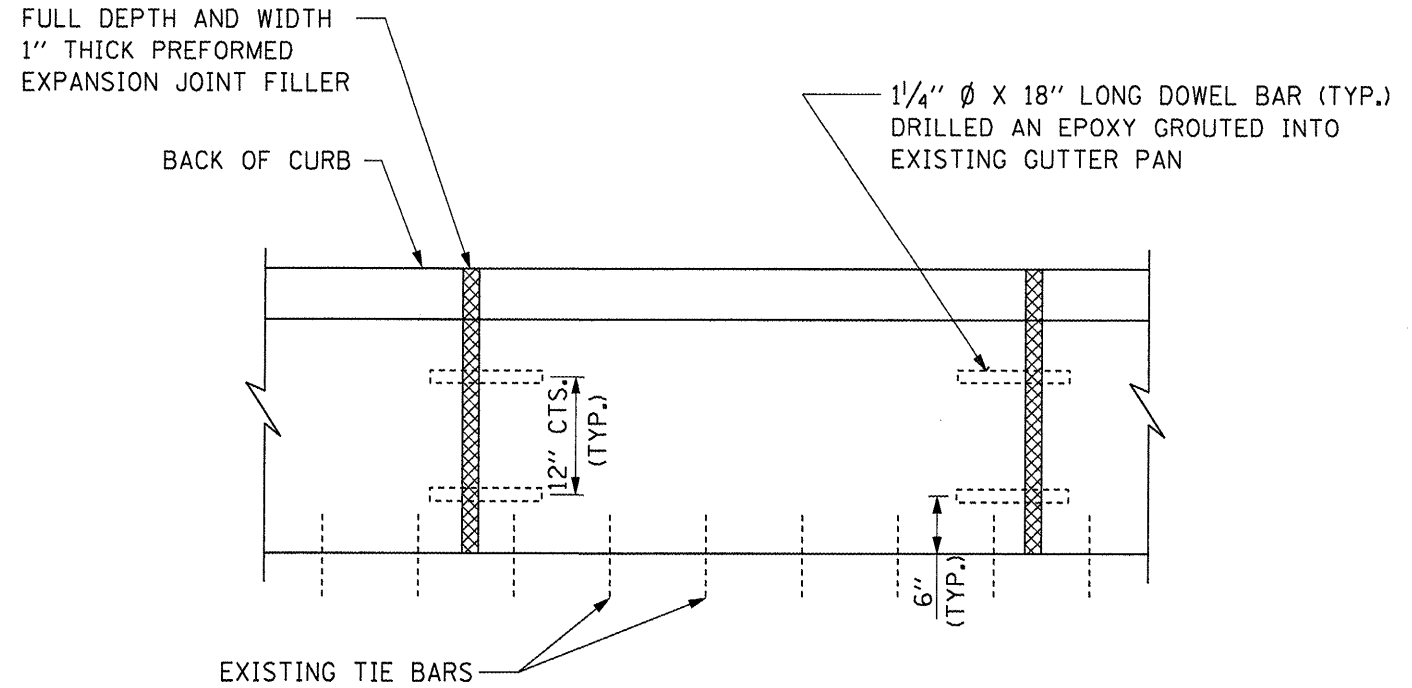


SECTION D-D

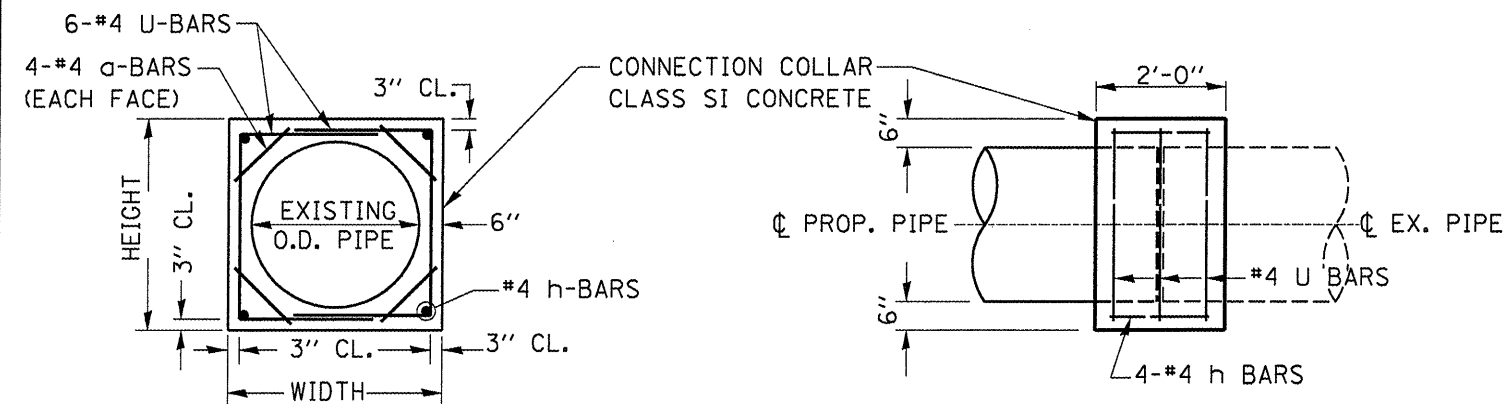
FILE NAME =	USER NAME = woodshankr1	DESIGNED -	REVISED -	STATE OF ILLINOIS DEPARTMENT OF TRANSPORTATION	DETAIL "B"	F.A.P. RTE.	SECTION	COUNTY	TOTAL SHEETS	SHEET NO.	
ct\pw_work\PW100T\WOODSHANKRL\dms43279	d366871\cm317-details.dgn	DRAWN -	REVISED -			635	(105)I	KANKAKEE	7	6	
PLOT SCALE = 100.0000' / IN.	CHECKED -	REVISED -	REVISED -			CONTRACT NO. 66871					
PLOT DATE = Oct 03, 2008 - 07:43:01 AM	DATE -	REVISED -	REVISED -			FED. ROAD DIST. NO.	ILLINOIS FED. AID PROJECT				



SIDEWALK DETAIL

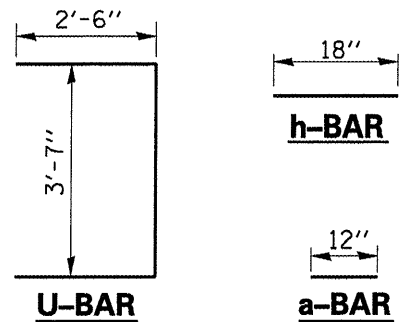


PLAN



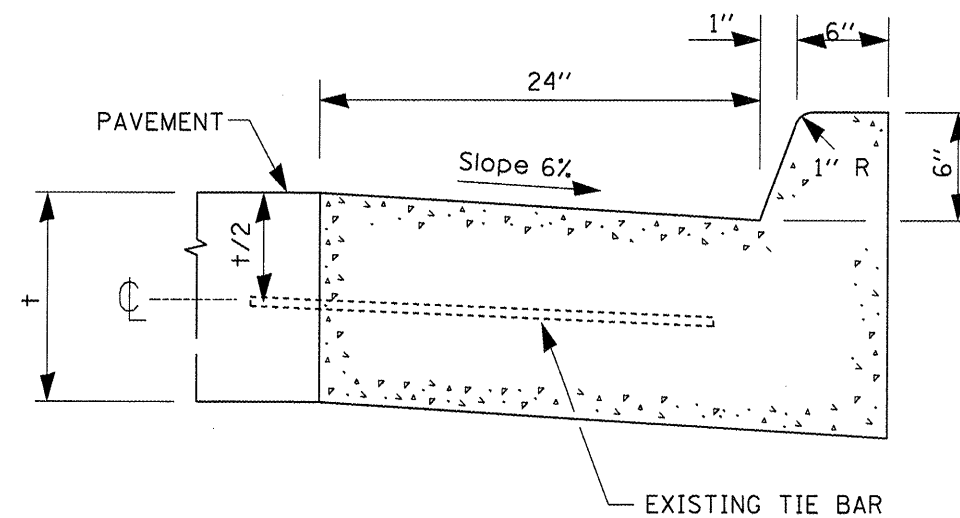
EXISTING CULVERT	EXTENSION COLLAR		a-BAR	u-BAR	h-BAR	CONC. COLLAR	REINF. BARS
SIZE	WIDTH	HEIGHT	12"	12"	18"		
DIA.	FT./IN.	FT./IN.	EA.	EA.	EA.	CU. YD.	POUND
30" Ø	4'-1"	4'-1"	16	12	8	1.4	88

QUANTITIES ARE FOR TWO COLLARS



COLLAR DETAIL

(DIRECT STORM SEWER CONNECTION)
COST OF COLLAR SHALL BE INCLUDED
IN THE COST OF THE STORM SEWER



ELEVATION

C.C.C. & G. TYPE B6.24

COST OF FURNISHING AND INSTALLING DOWEL BARS
SHALL BE INCLUDED IN THE COST OF THE CURB & GUTTER