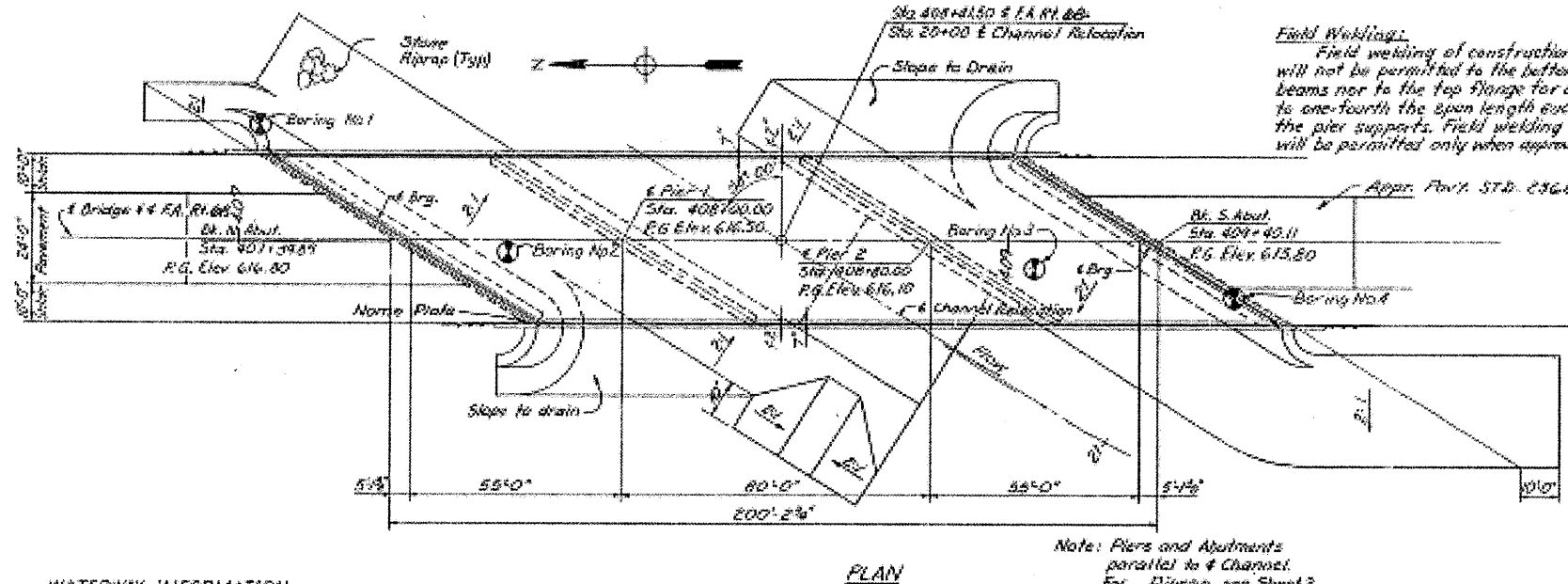
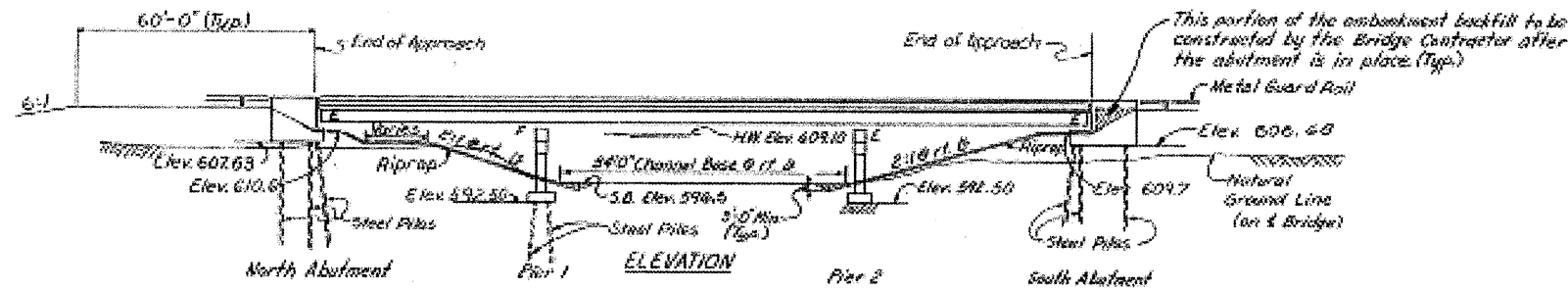


BM #55 "D" on Bridge (Kingwall) 48.5 ft. W of Sta. 408+22.00 Elev. 609.10.
 Existing Structure: Built in 1922, Reinforced Concrete Deck Girders and Closed
 Abutts. Bridge to be removed by Contractor before construction
 of new structure.

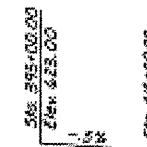
STATE OF ILLINOIS
 DEPARTMENT OF TRANSPORTATION

ROUTE NO.	SECTION	COUNTY	TOTAL SHEETS	SHEET NO.	SHEET NO. / TOTAL SHEETS
68	101B-1	LIVINGSTON	54	19	12 SHEETS
FED. ROAD DIST. NO.	ILLINOIS REC. AND PROJECT				



WATERWAY INFORMATION

Drainage Area 62 sq. mi.
 Present Opening 426 sq. ft.
 Required Opening 680 sq. ft.
 Proposed Opening 680 sq. ft.
 $Q (50) = 3950$ cfs
 Created Head = 0.73 ft.



DESIGN STRESSES

$k = 1,400$ psi (Curb, Parapet, Sub)
 $f_c = 20,000$ psi (Reinf.)
 $f_c = 80,000$ psi (Struct.) AASHTO M183
 $V_c = 75$ psi (Flg.)
 $n = 9$
 Allow 20% for Future WS

DECK SLAB
 $f_c = 3500$ psi
 $f_y = 60,000$ psi

Design Specifications: AASHTO 1973, plus inferences
 as applicable.

LOADING HS 20-44

DESIGNED	H.A. Rehagen
CHECKED	W.O. Walden
DRAWN	F.G. Oest
CHECKED	W.O. Walden
CHECKED	H.A. Rehagen

Field Welding:
 Field welding of construction accessories will not be permitted to the bottom flange of beams nor to the top flange for a distance equal to one-fourth the span length each way from the pier supports. Field welding in other areas will be permitted only when approved by the Engineer.

GENERAL NOTES

All contact surfaces of joints for the diaphragms, cross frames and/or lateral bracing shall be free of paint or lacquer. Protective coat shall not be applied to surfaces to which waterproofing membrane system is applied.

All reinforcement bars shall be lapped 26 diameters unless otherwise shown.

The concrete rail section above the mandatory construction joint at the top of the slab shall be constructed of Class X Concrete, except the aggregates shall conform to the requirements of Handrail Concrete.

See Proposal for Boring Data.
 Fasteners shall be high strength bolts. Bolts 3/4", open holes 1 1/8", unless otherwise noted.

All reinf. bars in deck shall conform to AASHTO M-31 or M-53 gr. 60.

The embankment configuration shown shall be the minimum embankment that must be constructed prior to the construction of the abutments.

The Contractor shall drive one steel NP10x42 test pile in a permanent location at the North Abutment as directed by the Engineer prior to ordering the remainder of the piles.

The basic lead silica chromate paint system shall be used for shop and field painting of Structural Steel.

Anchor bolts shall be set before bolting diaphragms over supports. For Field Welding see note this sheet.

For Match Tightness requirement and preparation of bearing seats see Sheet 3.

TOTAL BILL OF MATERIAL

Item	Unit	Super	Sub	Total
Structure Excavation	Sq. Yd.	—	296	296
Test Piles	Each	—	1	1
Steel Piles (NP10x42)	Lin. Ft.	—	1502	1502
Class X Concrete	Cu. Yd.	290.9	430.0	720.9
Reinforcement Bars	Lbs.	77,500	89,500	167,000
Structural Steel	LS	—	—	—
Stone Riprap	Sq. Yd.	—	1821	1821
Waterproofing Membrane System	Sq. Yd.	904	—	904
Name Plate	Each	—	1	1
Neoprene Expansion Joint - 2"	Lin. Ft.	168	—	168
Protective Coat	Sq. Yd.	—	158	158
Bituminous Concrete Surface Course Class I	Tons	73	—	73
Stud Shear Connectors	Each	1296	—	1296
Removal of Existing Structures #1	Each	—	—	1
Flow Drains	Each	24	—	24

* Calculated Plan Wt. of Structural Steel = 234,200 lbs. AASHTO M183
 ** Surface Course to be Mixture D.

STATION 408+41.50
 BUILT BY
 STATE OF ILLINOIS
 FA RT 68 SEC. 101B-1
 FA PROJ. M183(42)
 LOADINGS HS20
 STA. NO. 053-0154
 NAME PLATE
 (See Sht. R113)

APPROVED
 FOR STRUCTURAL STEEL ONLY
 [Signature]



GENERAL PLAN AND ELEVATION
 FA ROUTE 68 (ILL. 23) OVER
 LONG POINT CREEK
 FA RT. 68 SEC. 101B-1
 LIVINGSTON COUNTY
 STATION 408+41.50

FOR INFORMATION ONLY

FILE NAME	USER NAME = woodshankr1	DESIGNED - RON WOODSHANK	REVISED -	STATE OF ILLINOIS DEPARTMENT OF TRANSPORTATION	EXISTING STRUCTURE PLANS	F.A.P. RTE. 68	SECTION (101-B-1)BP	COUNTY LIVINGSTON	TOTAL SHEETS 8	SHEET NO. 5
CONTRACT NO. 66877	SCALE: _____	SHEET NO. 1 OF 4 SHEETS	STA. 407+39.89 TO STA. 409+40.11	FED. ROAD DIST. NO. _____	ILLINOIS					