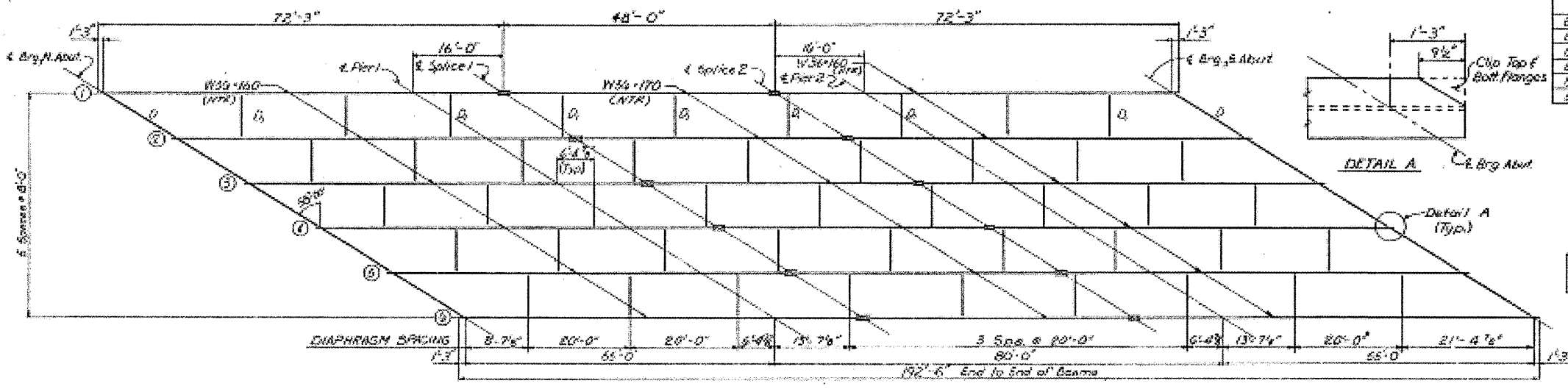


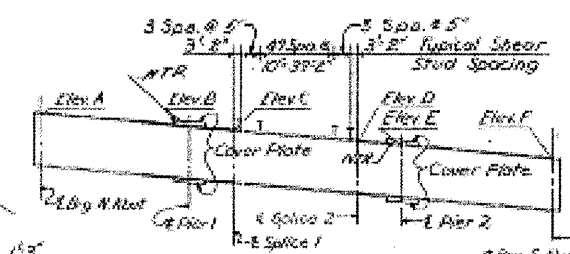
STATE OF ILLINOIS
DEPARTMENT OF TRANSPORTATION

ROUTE NO.	SECTION	COUNTY	TOTAL SHEETS	SHEET NO.
68	101B-1	LIVINGSTON	24	21

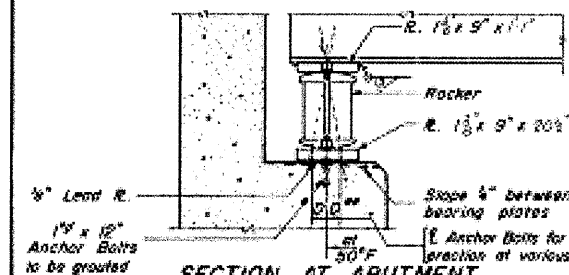
SHEET NO. 3
12 SHEETS



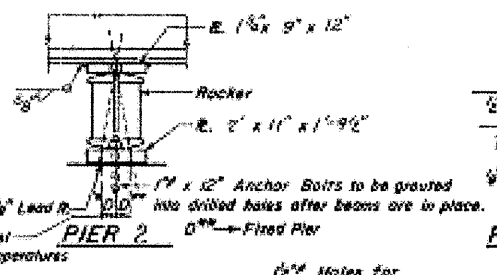
Elev.	Span 1	Span 2	Span 3	Span 4	Span 5	Span 6
Elev. A	645.578	645.460	645.741	645.677	645.488	645.288
Elev. B	645.303	645.483	645.467	645.402	645.233	644.983
Elev. C	645.223	645.323	645.307	645.322	645.133	644.903
Elev. D	644.983	645.083	645.147	645.082	644.893	644.663
Elev. E	644.903	645.003	645.067	645.002	644.813	644.583
Elev. F	644.628	644.737	644.797	644.727	644.538	644.308



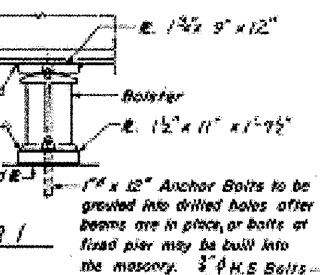
PLAN
NTR: Designates Notch Toughness Requirement



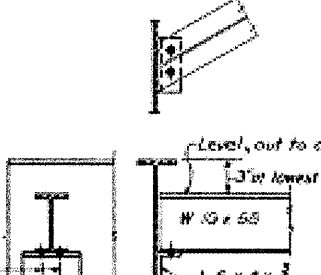
SECTION AT ABUTMENT
1/2" Lead R.
1 1/2" x 12" Anchor Bolts to be grouted into drilled holes after beams are in place. See SHEET 2 for temporary hold-downs.



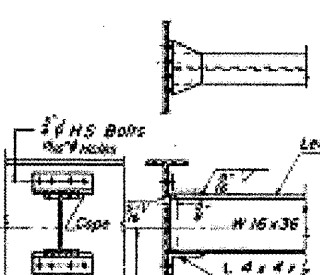
PIER 2
1 1/2" x 12" Anchor Bolts to be grouted into drilled holes after beams are in place.



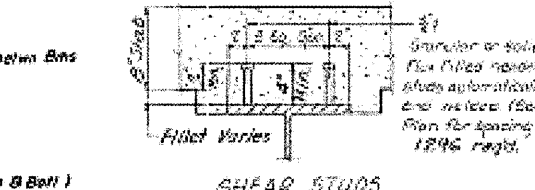
PIER 1
1 1/2" x 12" Anchor Bolts to be grouted into drilled holes after beams are in place, or bolts at fixed pier may be built into the masonry.



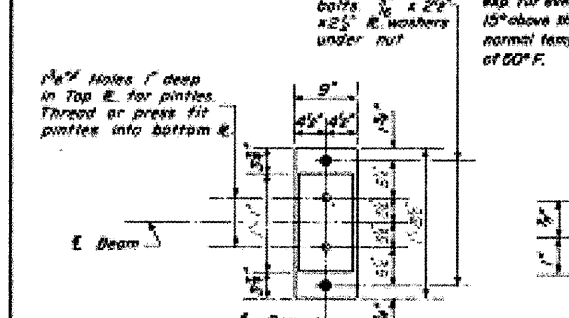
DIAPHRAGM D
10 Required



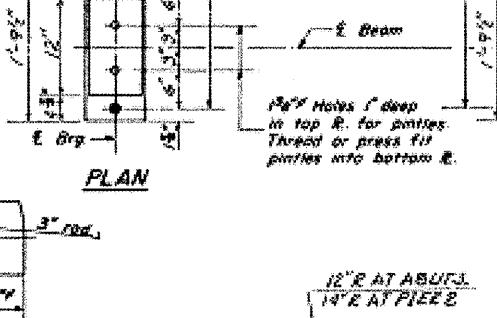
DIAPHRAGM D
15 Required



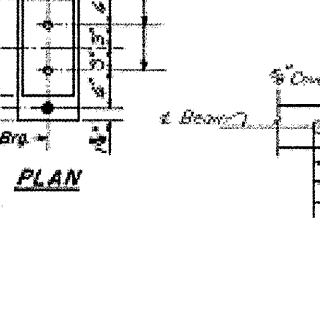
SHEAR STUDS
Note: Bearing seat surfaces shall be constructed or adjusted to the designated elevation within a tolerance of +/- 1/8" inch.



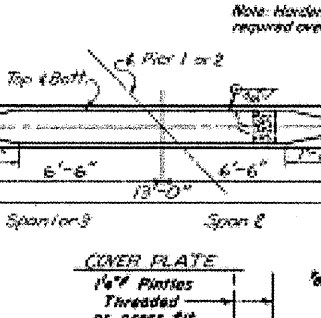
PLAN
1 1/2" Holes 1" deep in top E. for pintles. Thread or press fit pintles into bottom E.



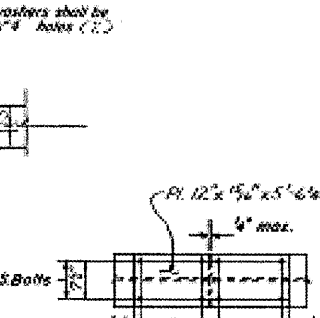
PLAN
1 1/2" Holes 1" deep in top E. for pintles. Thread or press fit pintles into bottom E.



PLAN
1 1/2" Holes 1" deep in top E. only for 1 1/2" pintles.



DIAPHRAGM D
10 Required

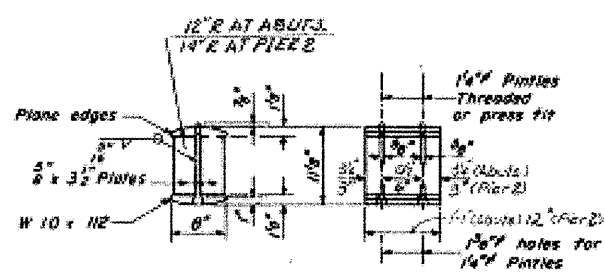


DIAPHRAGM D
15 Required

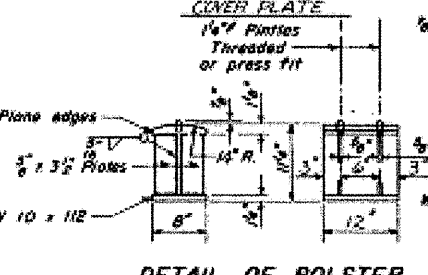
NOTES
Bearing seat surfaces shall be constructed or adjusted to the designated elevation within a tolerance of +/- 1/8" inch. Adjustment shall be made either by grinding the surface or slimming the bearing. Two 1/2" adjusting shims, of the dimensions of the bottom bearing plate, shall be provided for each bearing in addition to all other plates or shims. The main load carrying member components subject to tensile stress shall conform to the Supplemental Requirements for Notch Toughness Zone B. These components are the tension flanges, webs, all splice plate material & top cover plates of the wide flange beams.

NOTES
For Table of Moments and Reactions see SHEET 2.

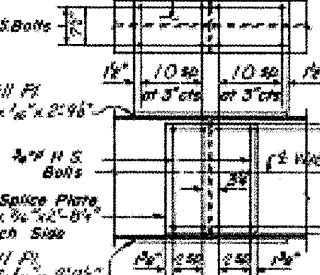
DESIGNED	A. Bobring
CHECKED	J. A. Lichan
DRAWN	M. J. Stahl
CHECKED	L. Glaser



DETAIL OF ROCKER AT ABUTS & PIER 2



DETAIL OF BOLSTER AT PIER 1



DETAIL OF SPLICE

FOR INFORMATION ONLY