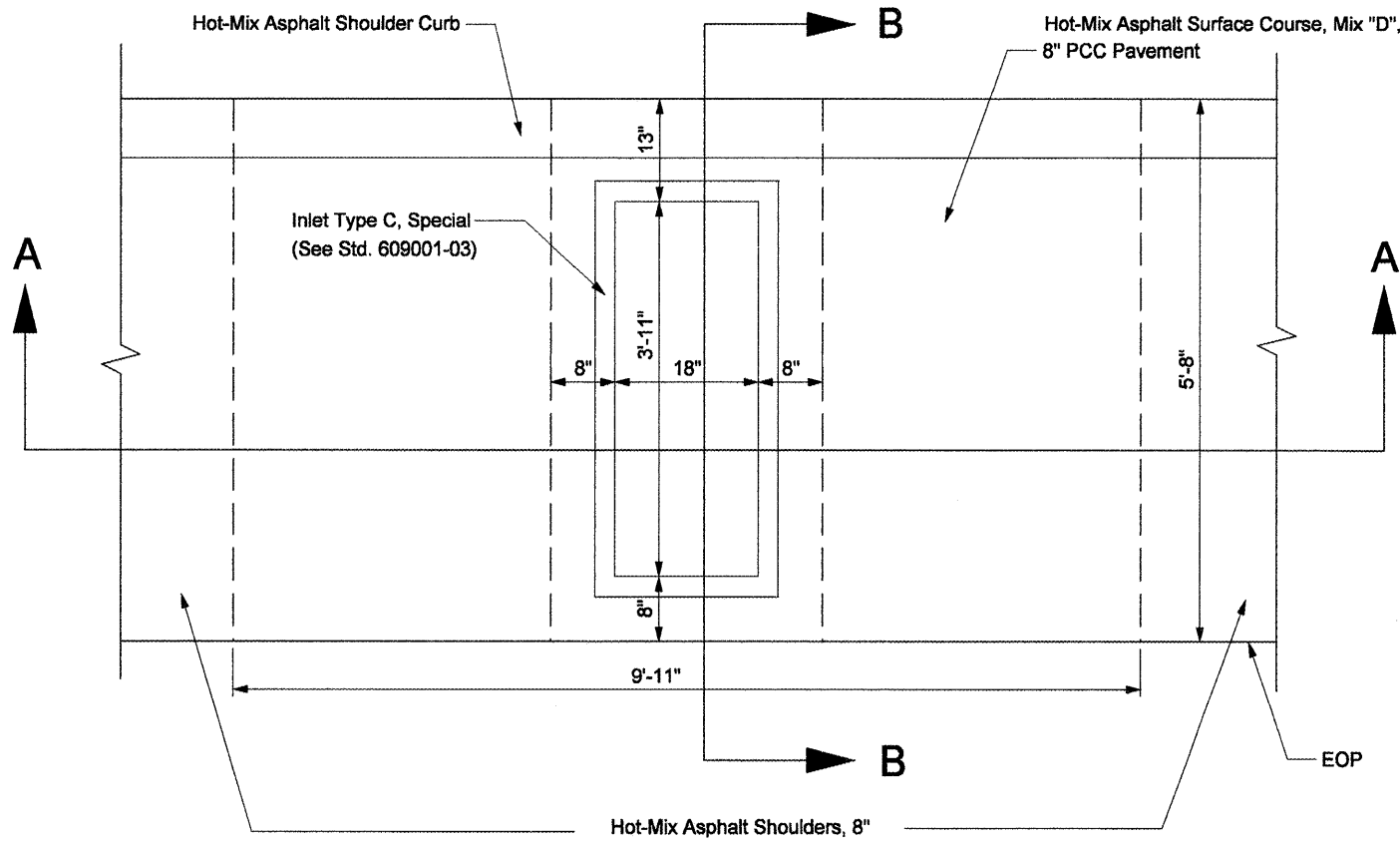
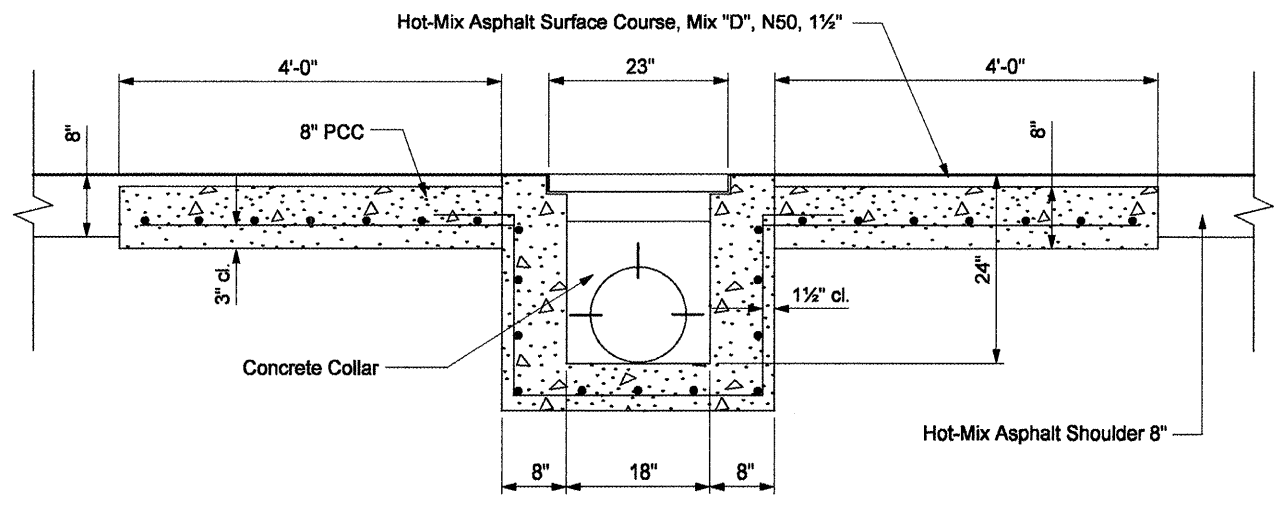


DESIGNER NOTES:

- 2. INCLUDE STATE STANDARDS 609001, 609006 OR 610001, IF APPLICABLE
- 3. INCLUDE DISTRICT CADD STANDARDS FOR "GUARDRAIL EROSION CONTROL TREATMENTS", "SEEPAGE COLLARS FOR BURIED PIPES", AND "PIPE ELBOW"

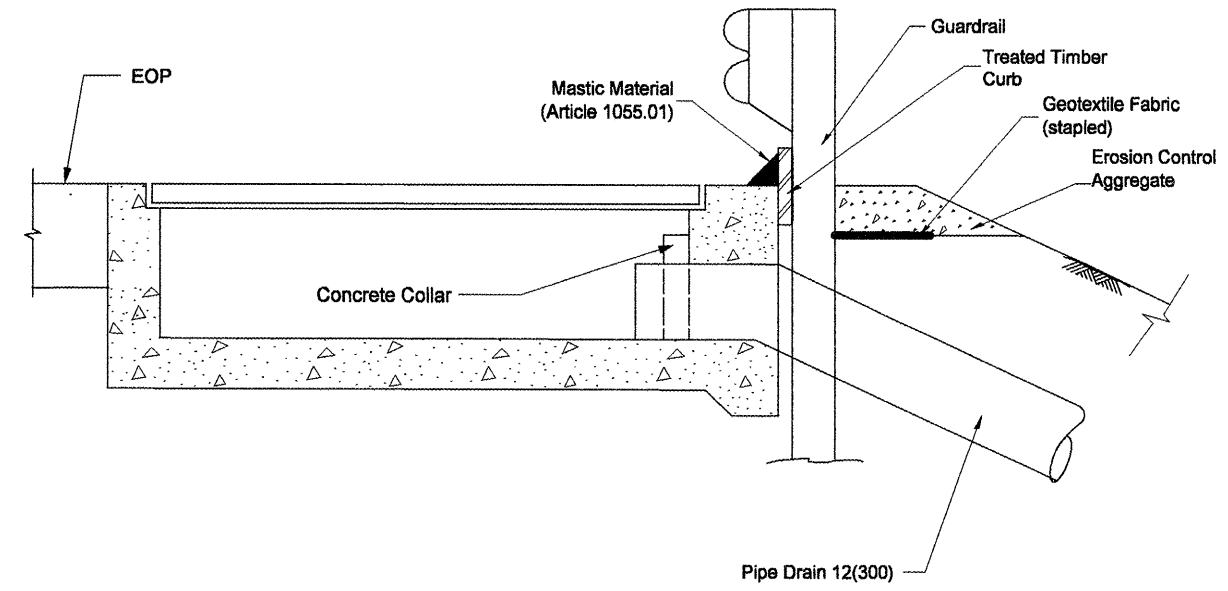


TYPICAL DETAIL PLAN

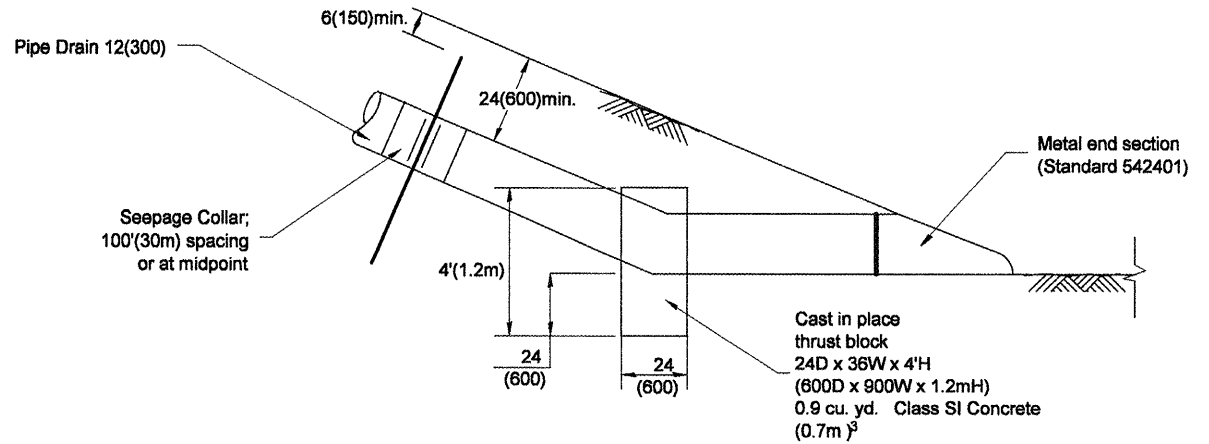


SECTION A-A

Note: See Std. 609001 for reinforcement & frame & grate details



SECTION B-B



GENERAL NOTES

1. The material for Pipe Drains shall be bituminous coated galvanized corrugated steel culvert pipe or bituminous coated corrugated aluminum alloy pipe in accordance with Article 601.02(f) or 601.02(i).
2. An approved mastic material (Article 1055.01) shall be applied to the inside of the connecting bands.
3. The contract unit price "Each" for Inlet Type C, Special shall include the 8" PCC shoulder, frame & grate, reinforcement and all work necessary to build the inlet.

All dimensions are in Inches (millimeters) unless otherwise noted.

STATE OF ILLINOIS
DEPARTMENT OF TRANSPORTATION

TYPE C INLET BOX, STANDARD 609001 (SPECIAL)

NOT TO SCALE

F.A.P. RTE.	SECTION	COUNTY	TOTAL SHEETS	SHEET NO.
317	(137.102)RS-4, 101RS-3	FULTON	56	28
CONTRACT NO. 68331				
FED. ROAD DIST. NO. 4 ILLINOIS FED. AID PROJECT				