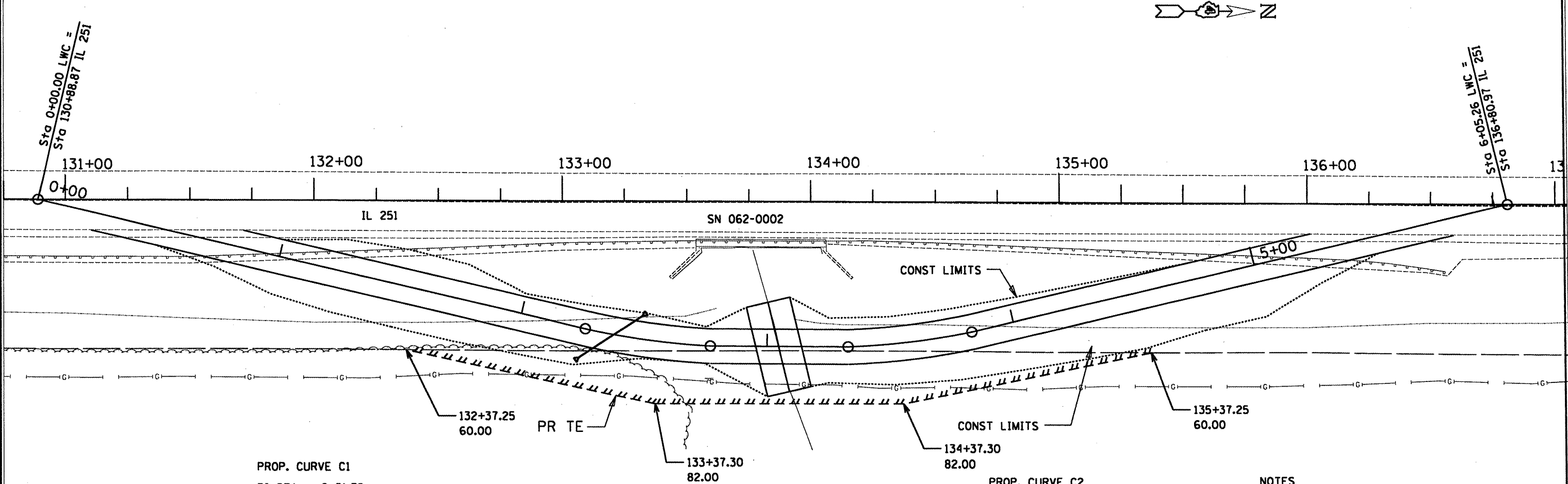


NOTE

EXISTING GAS UTILITY IS A 4" STEEL MAIN OPERATING AT 500 PSIG ON A 720 PSIG SYSTEM. DEPTH OF UTILITY VARIES BETWEEN 3'-6" TO 8'-4" ALONG THE CROSSOVER



PROP. CURVE C1
 PI STA. = 2+51.79
 $\Delta = 9^\circ 39' 43''$ (LT)
 $D = 19^\circ 05' 55''$
 $R = 300.00'$
 $T = 25.36'$
 $L = 50.59'$
 $E = 1.07'$
 P.C. STA. = 2+26.43 =
 ML STA. 133+09.57, 51.04' RT OFFSET
 P.T. STA. = 2+77.02 =
 ML STA. 133+59.42, 58.04' RT OFFSET

LOW WATER CROSSING TO BE USED BY ADJACENT PROPERTY OWNERS AND CONSTRUCTION PERSONNEL ONLY DURING CONSTRUCTION. THE CROSSING SHOWN IS PROVIDED FOR INFORMATIONAL PURPOSES ONLY. THE LOW WATER CROSSING SHALL CONFORM TO THE SPECIAL PROVISION FOR HAUL ROAD STREAM CROSSINGS, OTHER TEMPORARY CROSSINGS, AND IN-STREAM WORK PADS.

PROP. CURVE C2
 PI STA. = 3+57.77
 $\Delta = 9^\circ 34' 58''$ (LT)
 $D = 19^\circ 05' 55''$
 $R = 300.00'$
 $T = 25.15'$
 $L = 50.17'$
 $E = 1.05'$
 P.C. STA. = 3+32.63 =
 ML STA. 134+15.02, 58.53' RT OFFSET
 P.T. STA. = 3+82.80 =
 ML STA. 134+64.76, 52.34' RT OFFSET

NOTES
 A MINIMUM ROADWAY TOP WIDTH OF 14 FEET SHALL BE MAINTAINED ALONG THE LENGTH OF THE CROSSING
 THE MAXIMUM IN-STREAM ELEVATION OF THE CROSSING SHALL NOT EXCEED EL. 633.50
 A MINIMUM IN-STREAM CLEAR OPENING OF 35 SQUARE FEET SHALL BE MAINTAINED TO CONVEY STREAM FLOW
 SEE CONSTRUCTION PLANS, SN 062-0002 FOR ALIGNMENT TIES AND BENCHMARK

| | | | | | | | | | | |
|---|-----------------------|------------|-----------|---|--|---|--------------|----------|--------------------|-----------|
| FILE NAME = | USER NAME = meusherde | DESIGNED - | REVISED - | STATE OF ILLINOIS DEPARTMENT OF TRANSPORTATION | SN 062-0002 LOW WATER CROSSING PLAN VIEW | F.A.S. RTE. | SECTION | COUNTY | TOTAL SHEETS | SHEET NO. |
| g:\projects\1251sendy\0620002plan01.dgn | | DRAWN - | REVISED - | | | 253 | 68(BR, BR-1) | MARSHALL | 97 | 19 |
| | | CHECKED - | REVISED - | | | D-94-040-06 | | | CONTRACT NO. 68573 | |
| | | DATE - | REVISED - | | | FED. ROAD DIST. NO. 4 (ILLINOIS) FED. AID PROJECT | | | | |
| | | | | SCALE: | SHEET NO. OF SHEETS STA. TO STA. | | | | | |