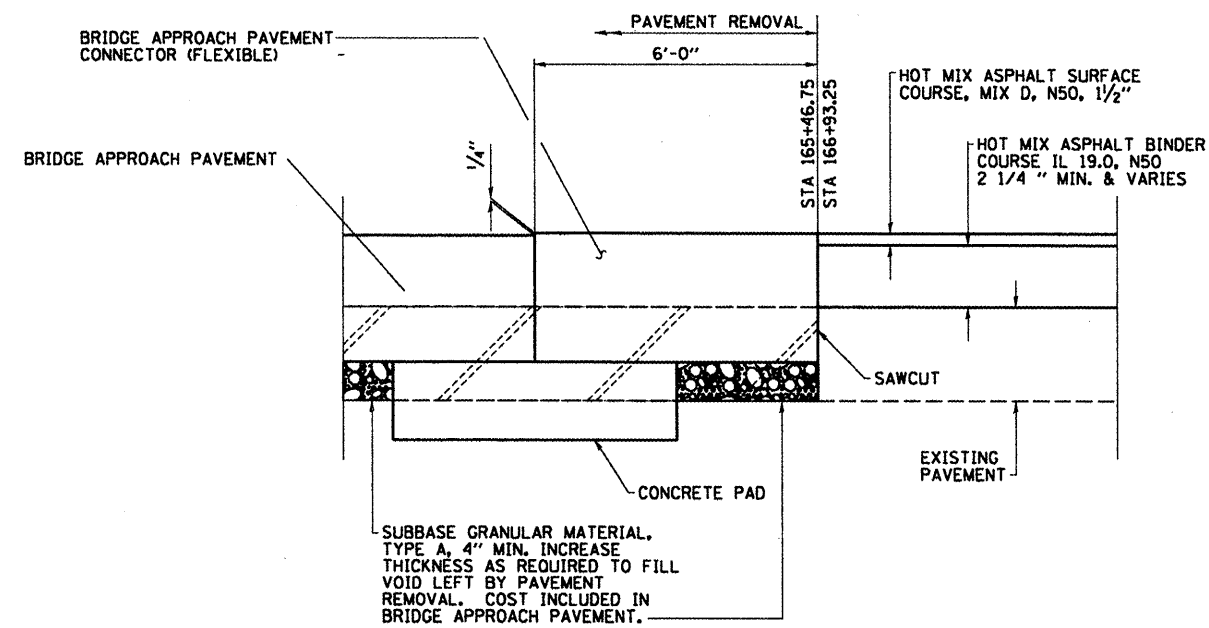
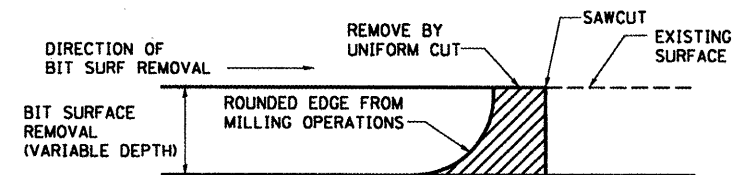


**BUTT JOINT SECTION**



**BRIDGE APPROACH PAVEMENT SECTION**



**DETAIL AT BUTT JOINT**

NOTE:  
 WHEN MILLING OPERATIONS PRODUCE A ROUNDED EDGE, THEN A SAWCUT SHALL BE USED TO MANUFACTURE A PERPENDICULAR EDGE AS SHOWN IN THE DETAIL. THE COST OF ALL WORK SHOWN IN THE DETAIL IS INCLUDED IN HMA SURFACE REMOVAL - BUTT JOINT. THE ENGINEER SHALL BE THE SOLE JUDGE CONCERNING THE USE OF THIS DETAIL.

FILE NAME = c:\projects\11251sandy\062001\miscdet.dgn	USER NAME = maushordae	DESIGNED - ---	REVISED - ---	<b>STATE OF ILLINOIS DEPARTMENT OF TRANSPORTATION</b>	<b>SN 062-0001 MISCELLANEOUS DETAILS</b>	F.A.S. RTE. 253	SECTION 68(BR, BR-1)	COUNTY MARSHALL	TOTAL SHEETS 97	SHEET NO. 42		
PLOT SCALE = 100.0000' / IN.	CHECKED - ---	REVISED - ---	SCALE: NONE			SHEET NO. ___ OF ___ SHEETS	STA. _____ TO STA. _____	CONTRACT NO. 68573				
PLOT DATE = 10/10/2008	DATE - -----	REVISED - ---	FED. ROAD DIST. NO. _____ [ILLINOIS] FED. AID PROJECT									