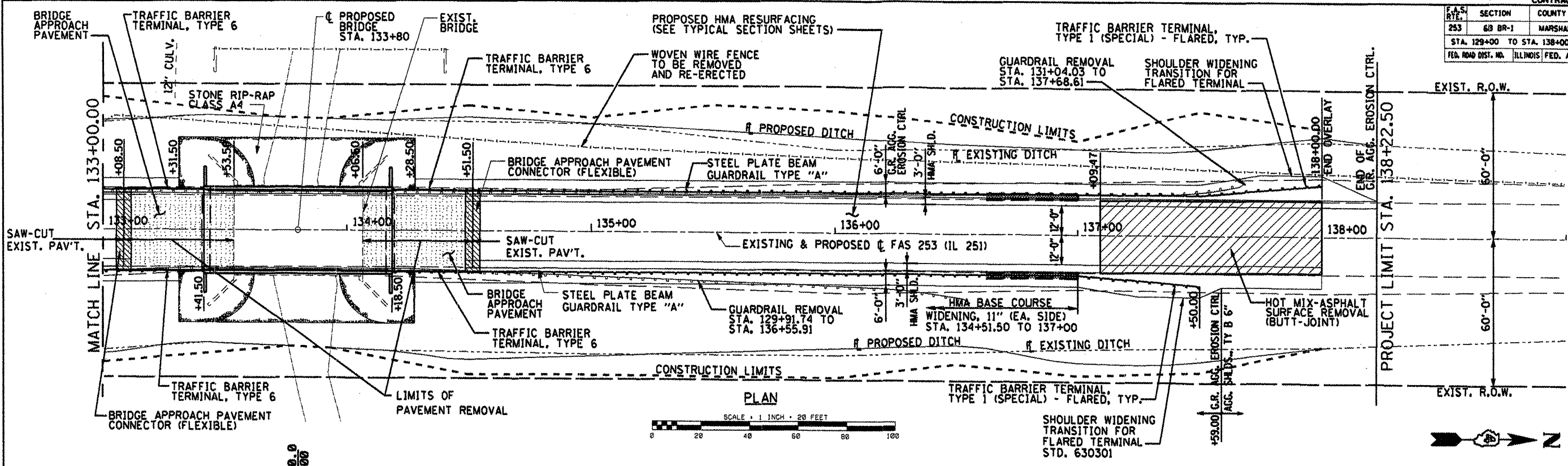
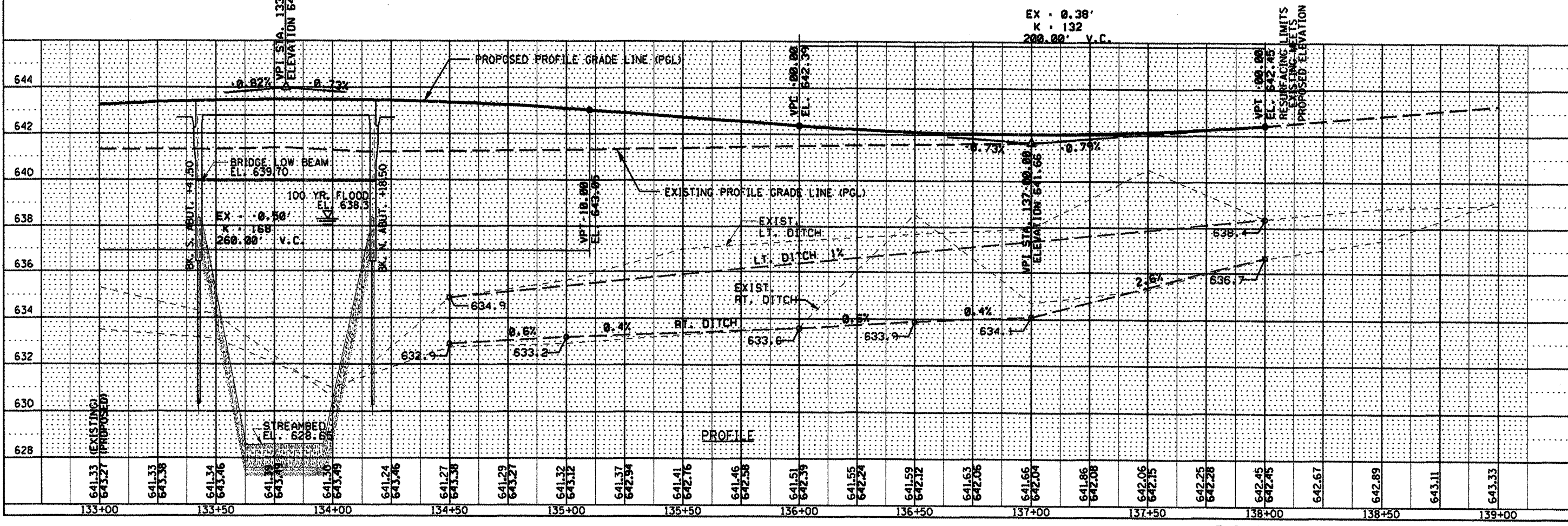


F.A.S. R/L	SECTION	COUNTY	TOTAL SHEETS	SHEET NO.
253	68 BR-1	MARSHALL	97	68
STA. 129+00 TO STA. 138+00				
FED. ROAD DIST. NO. ILLINOIS FED. AID PROJECT				

PLAN	DATE
BY	
CHECKED	
DATE	
NO.	



PROFILE	DATE
BY	
CHECKED	
DATE	
NO.	



FAS 253 (IL251) - STATIONS 133+00 TO 138+22.50