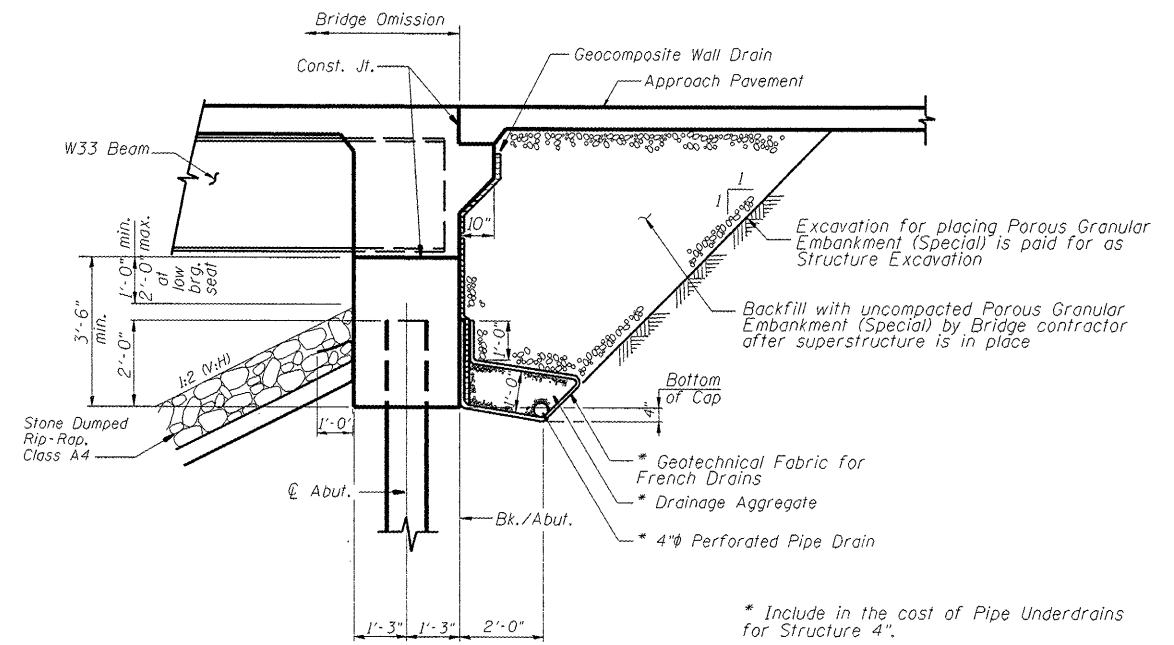


ELEVATION AT ABUTMENT

SECTION A-A

FIXED BEARING

Notes:
 Anchor bolts shall be ASTM F1554 all-thread (or an Engineer-approved alternate material) of the grade(s) and diameter(s) specified. ASTM A307 Grade C anchor bolts may be used in lieu of ASTM F1554 Grade 36 (Fy=36ksi). The corresponding specified grade of AASHTO M314 anchor bolts may be used in lieu of ASTM F1554.
 Anchor bolts may be either cast in place or installed in holes drilled after the supported member is in place.
 Drilled and set anchor bolts shall be installed according to Article 521.06 of the Standard Specifications.



SECTION THRU ABUTMENT (TYP.)

Notes:
 All drainage system components shall extend to 2'-0" from the end of each wingwall except an outlet pipe shall extend until intersecting with the side slopes. The pipes shall drain into concrete headwalls. (See Article 601.05 of the Standard Specifications and Highway Standard 601101)

S D I STRUCTURE DESIGNS, INCORPORATED
 ARCHITECTS & ENGINEERS
 PH: (773) 838-1780 • www.structuredesignsinc.com

REVISIONS	
NAME	DATE

ILLINOIS DEPARTMENT OF TRANSPORTATION
BEAM BEARING & ABUT. BACKFILL DETAILS
 ILL. RTE. 251
 OVER SANDY CREEK
 F.A.S. 253 SEC. 68 BR-1
 MARSHALL COUNTY
 STA. 133+80.00 S.N. 062-0085
 DESIGNED BY: S.G. DRAWN BY: T.C.S.
 DATE: 11-20-08 CHECKED BY: O.A.O.