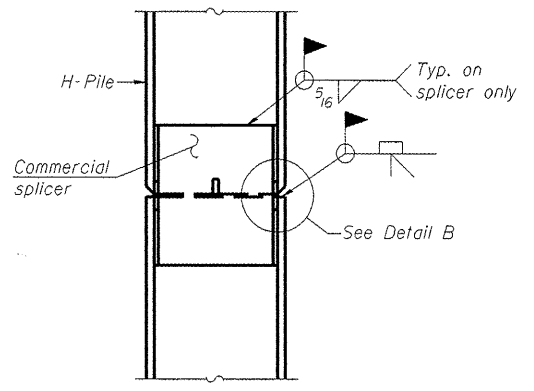
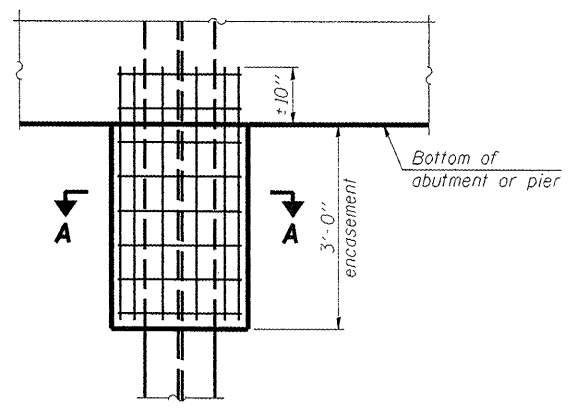


**STEEL PILE TABLE**

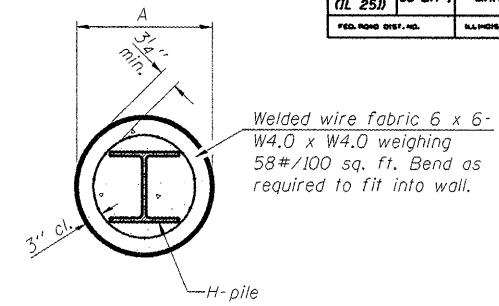
Designation	Depth d	Flange width br	Web and Flange thickness t	Encasement diameter A
HP 14x117	14 1/4"	14 7/8"	13/16"	30"
x102	14"	14 3/4"	1/16"	30"
x89	13 7/8"	14 3/4"	5/8"	30"
x73	13 5/8"	14 5/8"	1/2"	30"
HP 12x84	12 1/4"	12 1/4"	1/16"	24"
x74	12 1/8"	12 1/4"	5/8"	24"
x63	12"	12 1/8"	1/2"	24"
x53	11 3/4"	12"	7/16"	24"
HP 10x57	10"	10 1/4"	9/16"	24"
x42	9 3/4"	10 1/8"	7/16"	24"
HP 8x36	8"	8 1/8"	7/16"	18"



**ELEVATION**

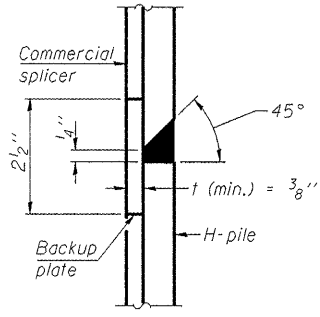


**ELEVATION**

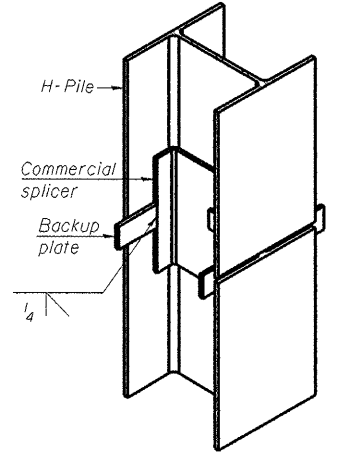


**SECTION A-A**

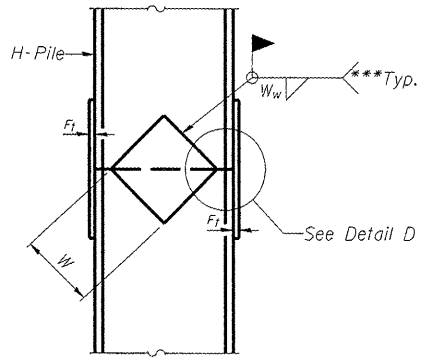
Note:  
Forms for encasement may be omitted when soil conditions permit.



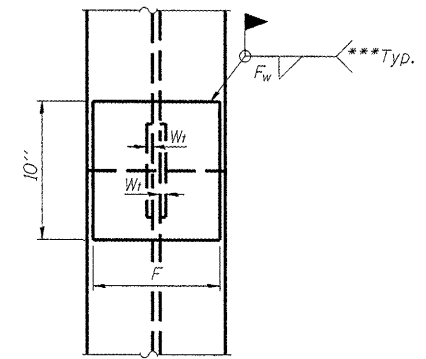
**DETAIL "B"**



**ISOMETRIC VIEW**

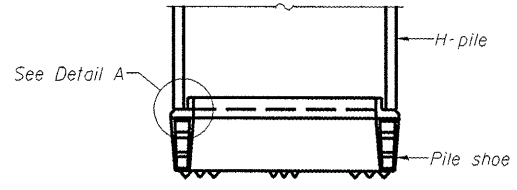


**ELEVATION**

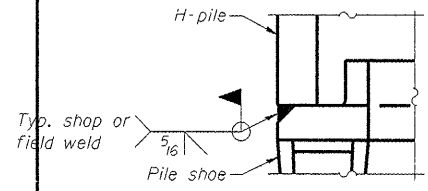


**END VIEW**

**PILE ENCASEMENT**

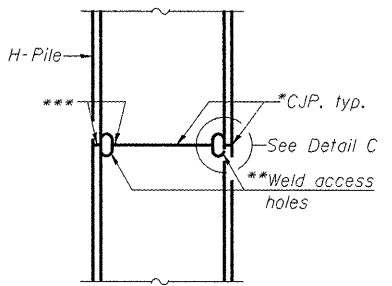


**ELEVATION**



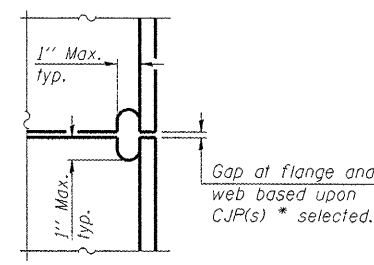
**DETAIL A**

**H-PILE SHOE ATTACHMENT**

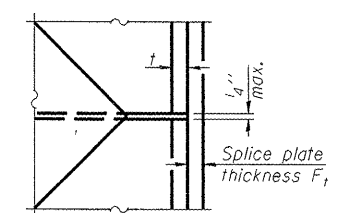


**ELEVATION**

**COMPLETE PENETRATION WELD SPLICE**



**DETAIL C**



**DETAIL D**

**WELDED PLATE FIELD SPLICE**

Designation	F	Ft	Fw	W	Wt	Ww
HP 14x117	12 1/2"	1"	7/8"	7 3/4"	5 1/2"	1/2"
x102	12 1/2"	7/8"	3/4"	7 3/4"	5 1/2"	1/2"
x89	12 1/2"	3/4"	1/16"	7 3/4"	5 1/2"	1/2"
x73	12 1/2"	5/8"	9/16"	7 3/4"	5 1/2"	1/2"
HP 12x84	10"	7/8"	1/16"	6 1/2"	5 1/2"	1/2"
x74	10"	7/8"	1/16"	6 1/2"	5 1/2"	1/2"
x63	10"	5/8"	1/2"	6 1/2"	1/2"	3/8"
x53	10"	5/8"	1/2"	6 1/2"	1/2"	3/8"
HP 10x57	8"	3/4"	9/16"	5 1/4"	1/2"	3/8"
x42	8"	5/8"	9/16"	5 1/4"	1/2"	3/8"
HP 8x36	7"	5/8"	7/16"	4 1/4"	1/2"	3/8"

Note:  
The steel H-piles shall be according to AASHTO M270 Grade 50.

- \*Use joint conforming to Figure 3.4 in AWS D1.1, Structure Welding Code - Steel.
- \*\*Preparation per Fig. 5.2 in AWS D1.1, Structure Welding Code - Steel.
- \*\*\*Interrupt welds 1/4" from end of each pile.

**S D I** STRUCTURE DESIGNS, INCORPORATED  
ARCHITECTS & ENGINEERS  
PH: (773) 838-1780 • www.structuredesignsinc.com

REVISIONS	
NAME	DATE

**ILLINOIS DEPARTMENT OF TRANSPORTATION**

**STEEL H-PILES DETAILS**

ILL. RTE. 251  
OVER SANDY CREEK  
F.A.S. 253 SEC. 68 BR-1  
MARSHALL COUNTY

STA. 133+80.00 S.N. 062-0085  
DESIGNED BY: S.G. DRAWN BY: T.C.S.  
DATE: 11-20-08 CHECKED BY: O.A.O.