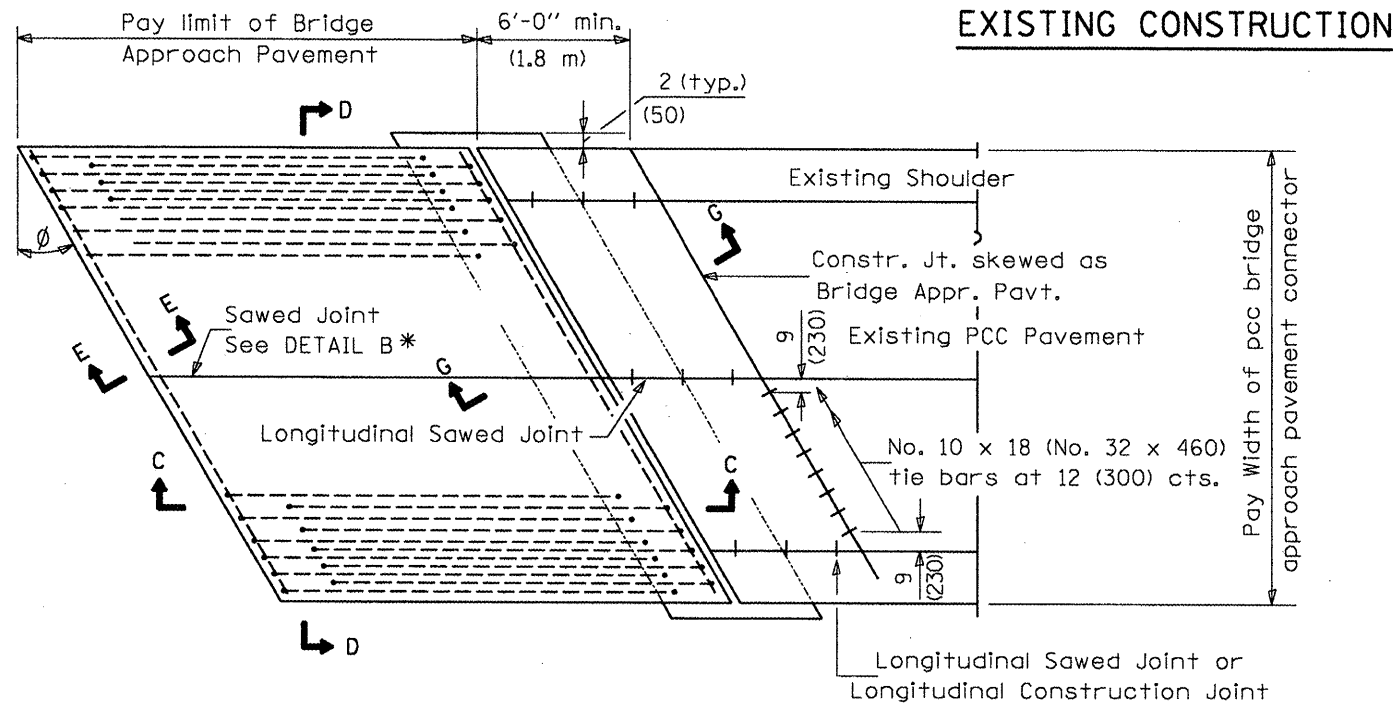
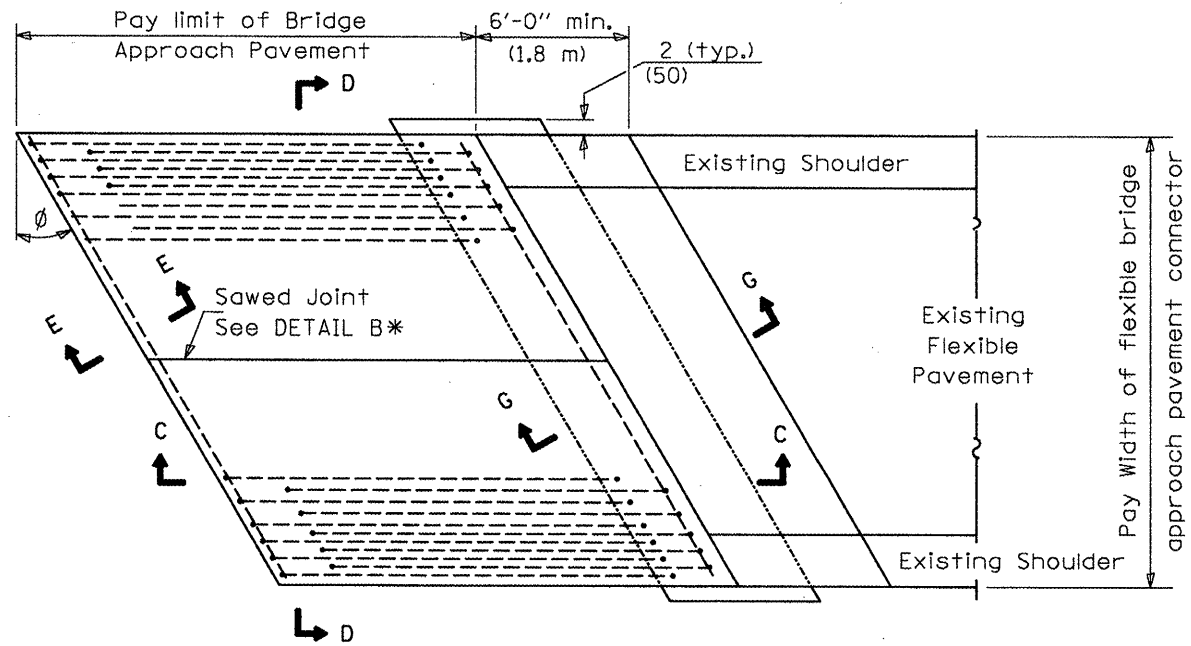


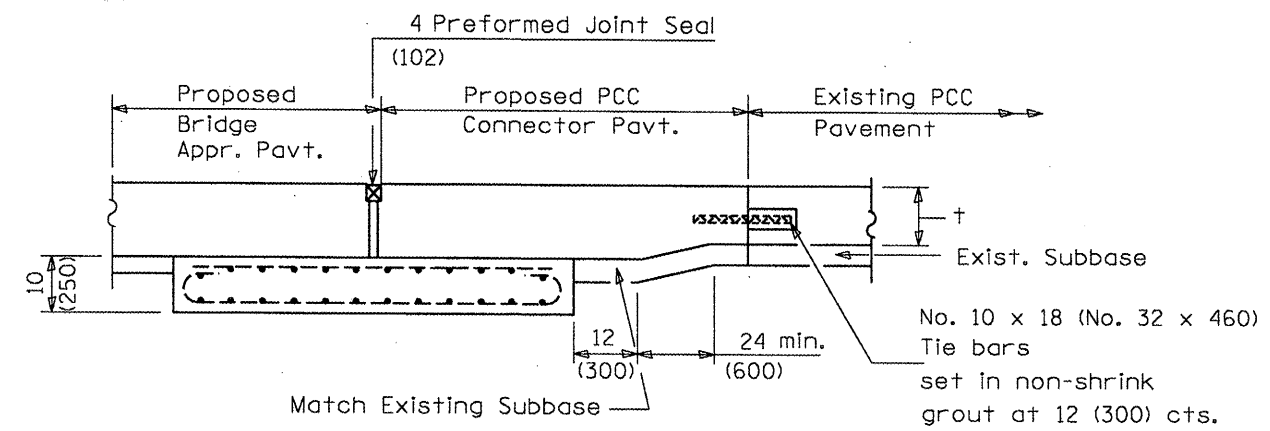
F.A.P. RTE.	SECTION	COUNTY	TOTAL SHEETS	SHEET NO.
253	68(BR, BR-1)	MARSHALL	97	95
FED. ROAD DIST. NO. 4	ILLINOIS	CONTRACT NO. 68573		



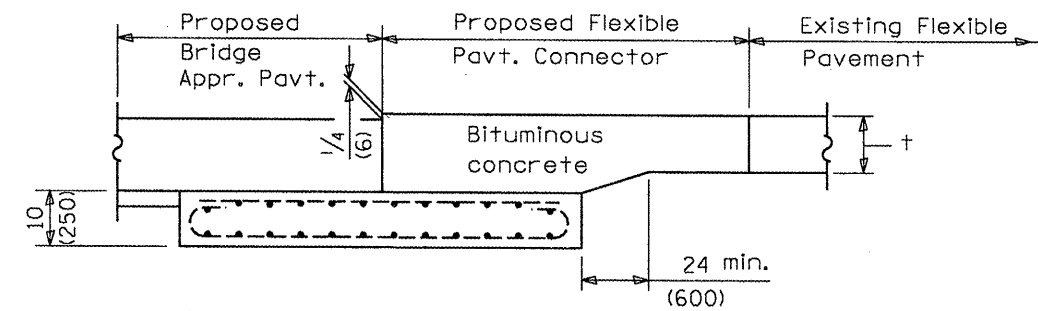
**BRIDGE APPROACH PAVEMENT CONNECTOR (PCC)**



**BRIDGE APPROACH PAVEMENT CONNECTOR (FLEXIBLE)**



**SECTION G-G - RIGID PAVEMENT**



**SECTION G-G - FLEXIBLE PAVEMENT**

**BRIDGE APPROACH PAVEMENT**

(Sheet 2 of 4)