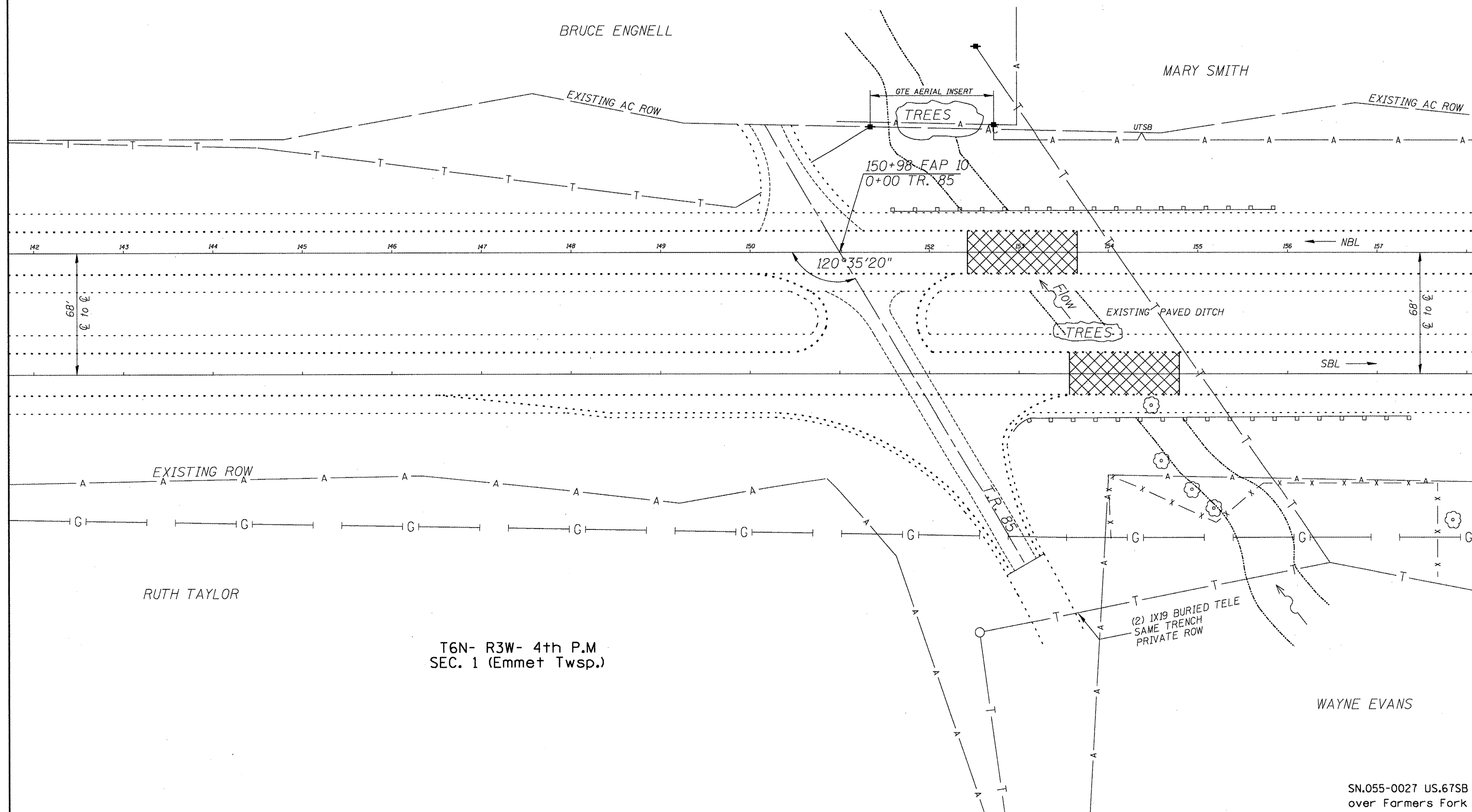




T6N- R2W- 4th P.M
SEC. 6 (MaComb Twsp.)



T6N- R3W- 4th P.M
SEC. 1 (Emmet Twsp.)

SN.055-0027 US.67SB
over Farmers Fork

FILE NAME = Emergency Bridge Beam Repl.
S:\DEN\DRAWING\STDS&PLNS\BRIDGE
#FILE#
CONTRACTS\Emergency PPC Beam
Repairs\68850 SN055-0027 Farmers
Fork.dgn

USER NAME = #USER#
PLOT SCALE = #SCALE#
PLOT DATE = #DATE#

DESIGNED - CEJ
DRAWN - CEJ
CHECKED -
DATE - 8-28-2008

REVISED -
REVISED -
REVISED -
REVISED -

STATE OF ILLINOIS
DEPARTMENT OF TRANSPORTATION

GENERAL LAYOUT

SCALE: SHEET NO. OF SHEETS STA. TO STA.

F.A.P. RTE.	SECTION	COUNTY	TOTAL SHEETS	SHEET NO.
313	(38-B2)I	MCDONOUGH	16	6
CONTRACT NO. 68850				
FED. ROAD DIST. NO. 4 ILLINOIS FED. AID PROJECT				