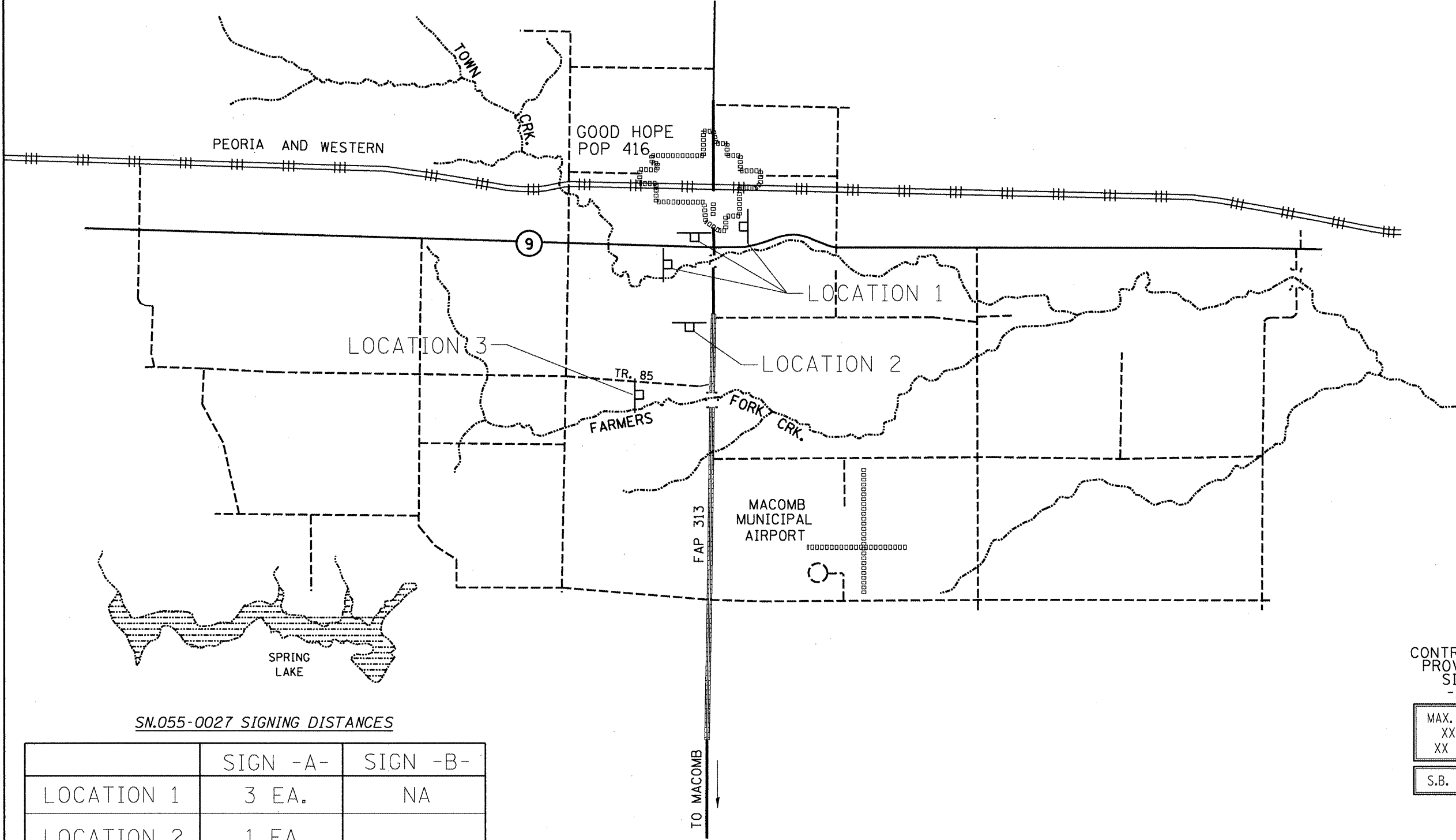


NOTES
 Notification signs shall be posted where necessary North of structure indicating maximum width ahead of 16'-0" for Stage II. Changeable Message Boards for S.B. traffic shall be placed one week prior to work start date for public safety and awareness.



SN.055-0027 SIGNING DISTANCES

	SIGN -A-	SIGN -B-
LOCATION 1	3 EA.	NA
LOCATION 2	1 EA.	
LOCATION 3	1 EA.	
LOCATION 4		

CONTRACTOR PROVIDED SIGN -A-

MAX. WIDTH XX-XX XX MILES

S.B. US. 67

SEE SPECIAL PROVISIONS FOR SIGNING DETAILS

SN.055-0027 US.67SB over FARMERS FORK

FILE NAME = Emergency Bridge Beam Rep	USER NAME = #USER#	DESIGNED - CEJ	REVISED - ---	STATE OF ILLINOIS DEPARTMENT OF TRANSPORTATION	WIDTH RESTRICTION SIGNING	F.A.P. RTE.	SECTION	COUNTY	TOTAL SHEETS	SHEET NO.
*FILE#		DRAWN - CEJ	REVISED - ---			313	(38B-21)	McDONOUGH	16	9
CONTRACTS\Emergency PRC Beam	PLOT SCALE = #SCALE#	CHECKED - ---	REVISED - ---			PPC BEAM REPLACEMENT		CONTRACT NO. 68850		
Repairs\68850 SN055-0027 Farmers Fork.dgn	PLOT DATE = #DATE#	DATE - 08-28-2008	REVISED - ---			FED. ROAD DIST. NO. 4		ILLINOIS FED. AID PROJECT		
					SCALE: _____	SHEET NO. ___ OF ___ SHEETS		STA. _____ TO STA. _____		