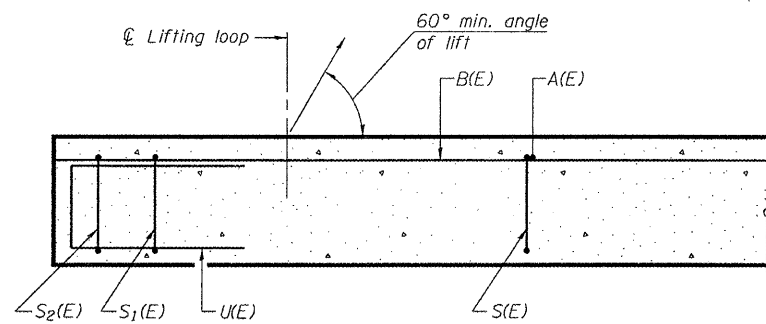
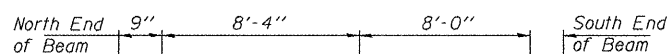


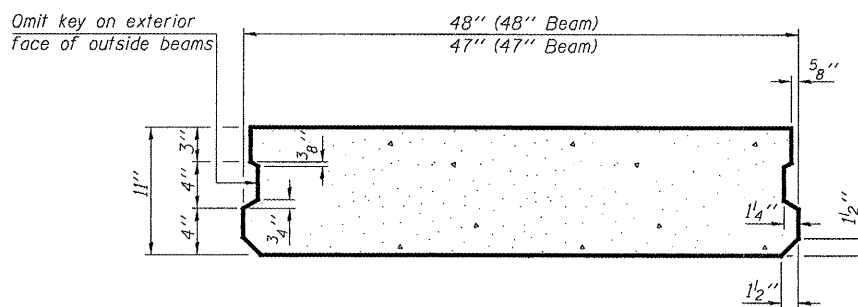
STATE OF ILLINOIS
DEPARTMENT OF TRANSPORTATION



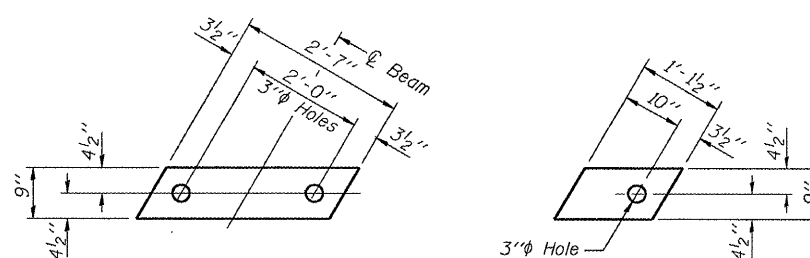
SECTION C-C



RAIL POST SPACING FOR SPAN 1



SECTION A-A
(Showing dimensions)

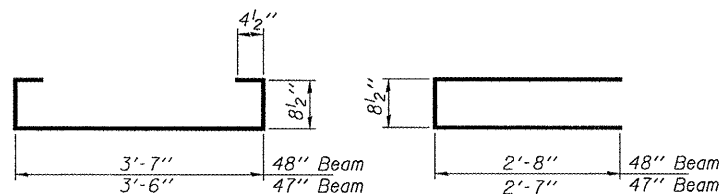


FABRIC BEARING PAD

FABRIC ADJUSTING SHIM

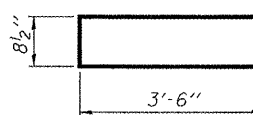
FIXED

Note: Omit holes when using expansion bearings.

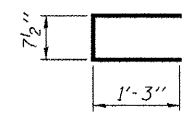


BAR S(E)

BAR S1(E)



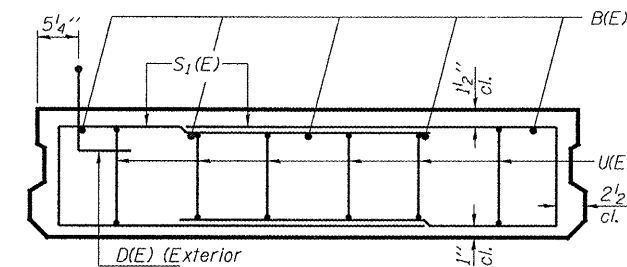
BAR S2(E)



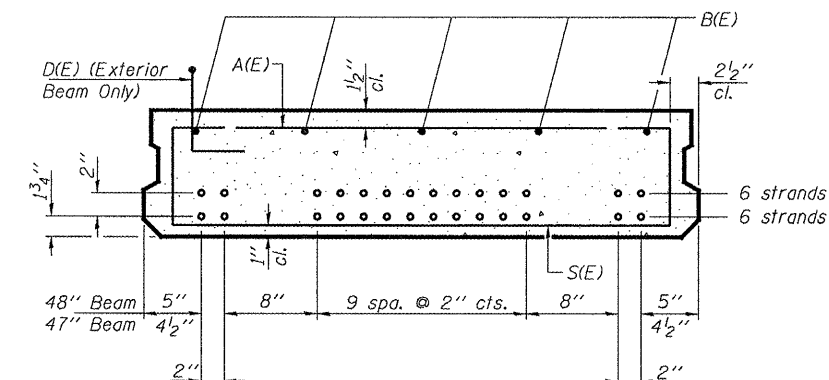
BAR U(E)

NOTES

Prestressing steel shall be uncoated high strength, low relaxation 7-wire strand, Grade 270. The nominal diameter shall be 1/2" and the nominal cross-sectional area shall be 0.153 sq. in. Reinforcement bars shall conform to ASTM A 706, Grade 60. (See Special Provisions). Two 1/2" fabric adjusting shims of the dimensions shown shall be provided for each bearing pad location. A minimum 2 1/2" lifting pin shall be used to engage the lifting loops during handling. Corrosion Inhibitor, per Article 1020.05(b)(12) and 1021.06 of the Standard Specifications, shall be used in the concrete for precast prestressed concrete deck beams. Compressive strength of prestressed concrete, f'c, shall be 6000 psi. Compressive strength of prestressed concrete at release, f'ci, shall be 5000 psi.



VIEW B-B



SECTION A-A

(Showing reinforcement and permissible strand locations)

Note: Place the number of strands specified in each row symmetrically about the centerline of beam in the permissible strand locations shown.

BAR LIST

ONE 47" BEAM ONLY

(For information only)

Bar No.	Size	Length	Shape
A(E)	#4	3'-6"	—
B(E)	#5	20'-9"	—
S(E)	#4	5'-8"	U
S1(E)	#4	6'-0"	U
S2(E)	#4	7'-9"	U
U(E)	#4	3'-2"	U

BAR LIST

ONE 48" BEAM ONLY

(For information only)

Bar No.	Size	Length	Shape
A(E)	#4	3'-7"	—
B(E)	#5	20'-9"	—
S(E)	#4	5'-9"	U
S1(E)	#4	6'-1"	U
S2(E)	#4	7'-9"	U
U(E)	#4	3'-2"	U

BILL OF MATERIAL

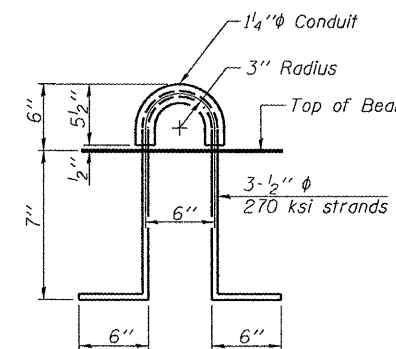
Precast Prestressed Conc. Deck Bms. (11" depth)	Sq. Ft.	587
---	---------	-----

BEAM DETAILS - SPAN 1

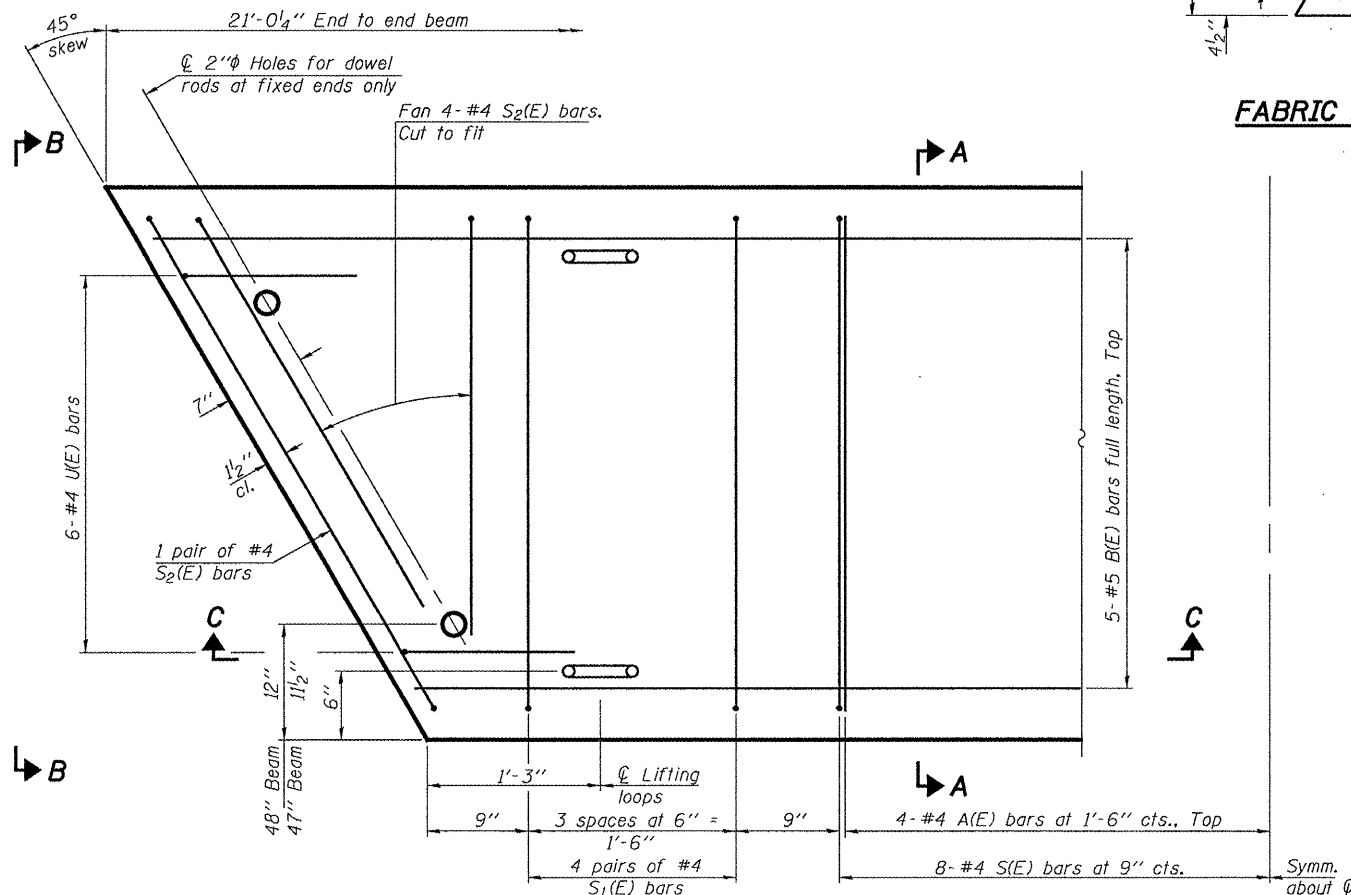
US ROUTE 67 OVER

FARMER'S FORK

SN 055-0027



LIFTING LOOP DETAIL



PLAN VIEW

DESIGNED	ATH
CHECKED	AJB
DRAWN	Kyle M. Steffen
CHECKED	ATH AJB

NOVEMBER 6, 2008
EXAMINED *Carl Boyer*
ENGINEER OF STRUCTURAL SERVICES
PASSED *Ralph E. Anderson*
ENGINEER OF BRIDGES AND STRUCTURES

PD-1148-R 5-16-08

SHEET NO. 3	F.A.P. RTE.	SECTION	COUNTY	TOTAL SHEETS	SHEET NO.
	310	-	McDONOUGH	16	12
7 SHEETS	FED. ROAD DIST. NO.		ILLINOIS FED. AID PROJECT		
			CONTRACT NO.		