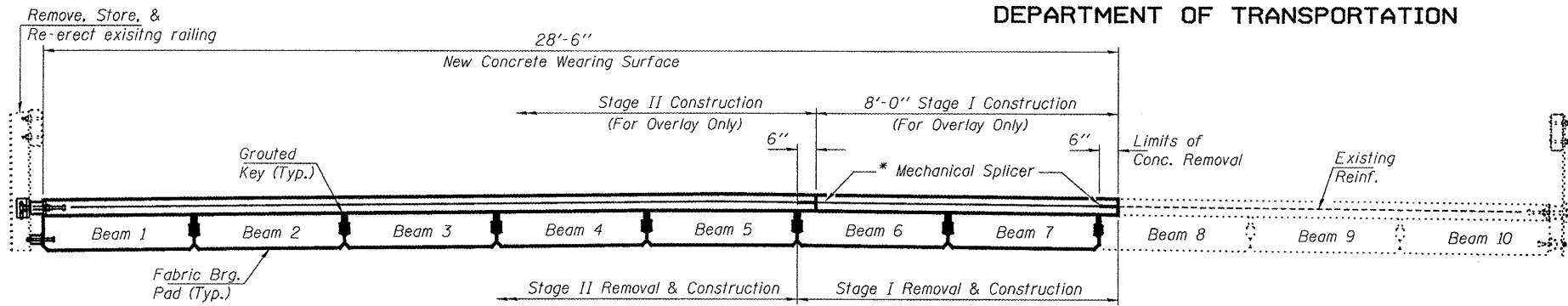


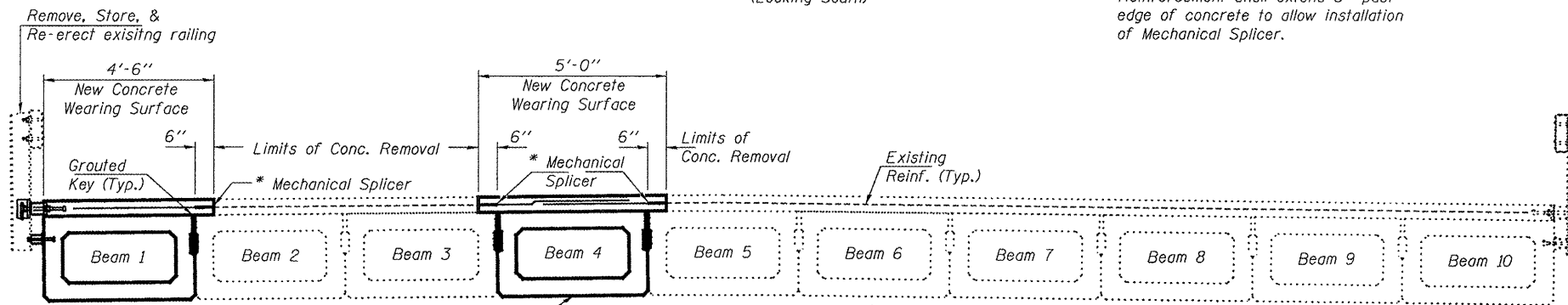
STATE OF ILLINOIS
DEPARTMENT OF TRANSPORTATION



CROSS SECTION - SPAN 1

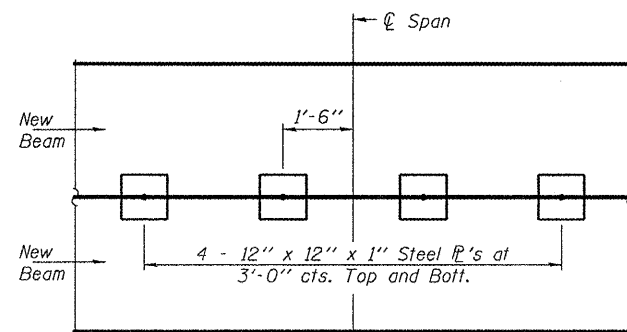
(Looking South)

* Reinforcement shall extend 6" past edge of concrete to allow installation of Mechanical Splicer.

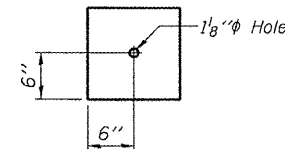


CROSS SECTION - SPAN 2

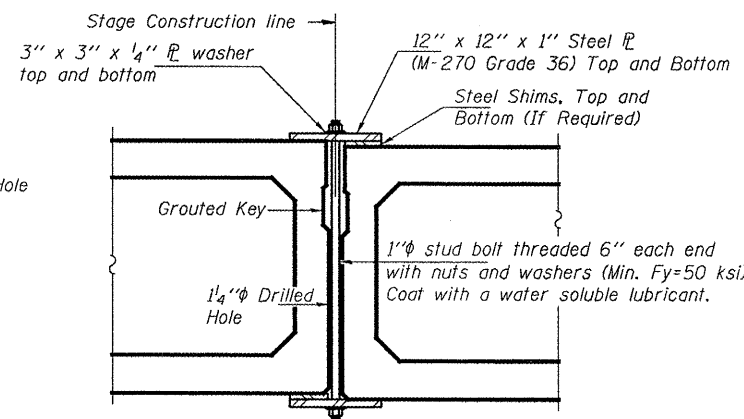
(Looking South)



PLAN

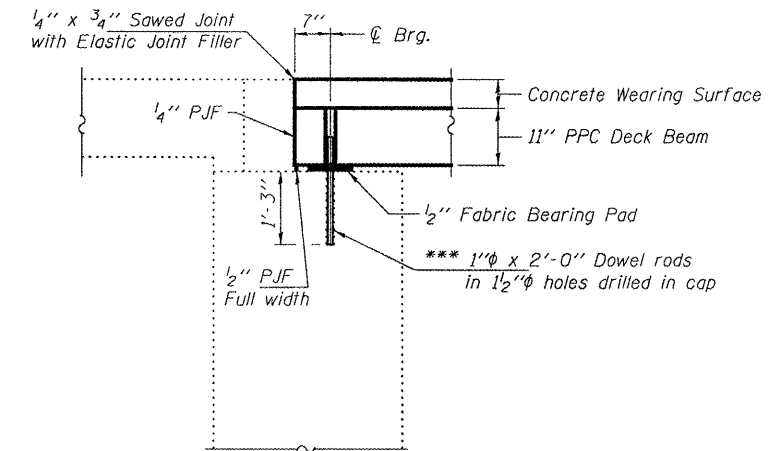


CLAMPING PLATE

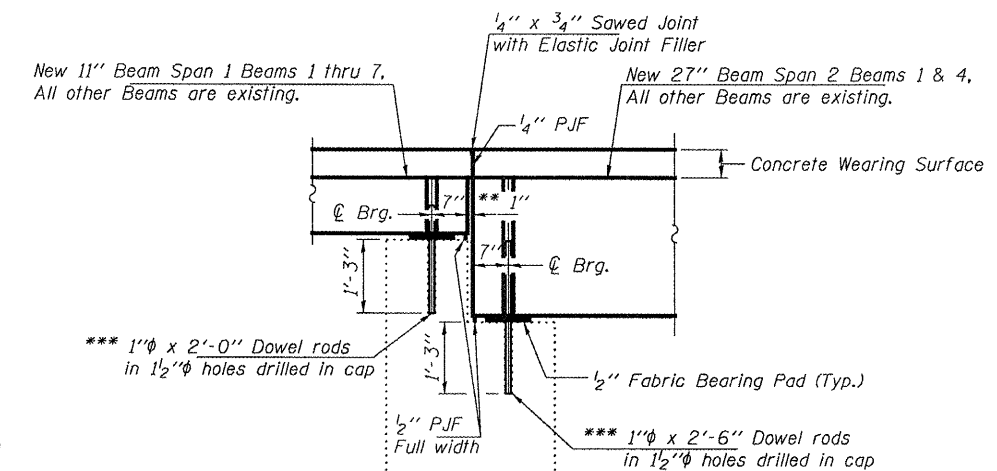


SHEAR KEY CLAMPING DEVICE

Notes:
See Special Provisions for Stage Construction Precast Prestressed Concrete Deck Beams.
See sheet 1 of 7 for Stage traffic lanes.
Cost is included with Precast Prestressed Concrete Deck Beams.



SECTION THRU ABUTMENT



TYPICAL SECTION THRU PIERS

Looking East thru Pier 1
Looking West thru Pier 2

** 1" Joint shall be filled with non-shrink grout. Dimension may vary to accommodate tolerance in beam lengths.

*** Existing dowel rods are to be burned off, ground flush, and sealed with epoxy prior to placement of new beams. Cost included in Removal of Existing PPC Deck Beams. After beams have been erected holes shall be drilled into cap and dowel rods placed. Dowel holes shall be filled with non-shrink grout to top of beam and allowed to cure a minimum of 24 hours prior to grouting the shear keys.

DESIGNED	ATH
CHECKED	AJB
DRAWN	Kyle M. Steffen
CHECKED	ATH AJB

NOVEMBER 6, 2008

EXAMINED *Carl Kroyer*
ENGINEER OF STRUCTURAL SERVICES

PASSED *Ralph E. Anderson*
ENGINEER OF BRIDGES AND STRUCTURES

**REPAIR DETAILS
US ROUTE 67 OVER
FARMER'S FORK
SN 055-0027**

SHEET NO. 6	F.A.P. RTE.	SECTION	COUNTY	TOTAL SHEETS	SHEET NO.
	310	-	McDONOUGH	16	15
7 SHEETS	FED. ROAD DIST. NO.		ILLINOIS	CONTRACT NO.	
		FED. AID PROJECT			