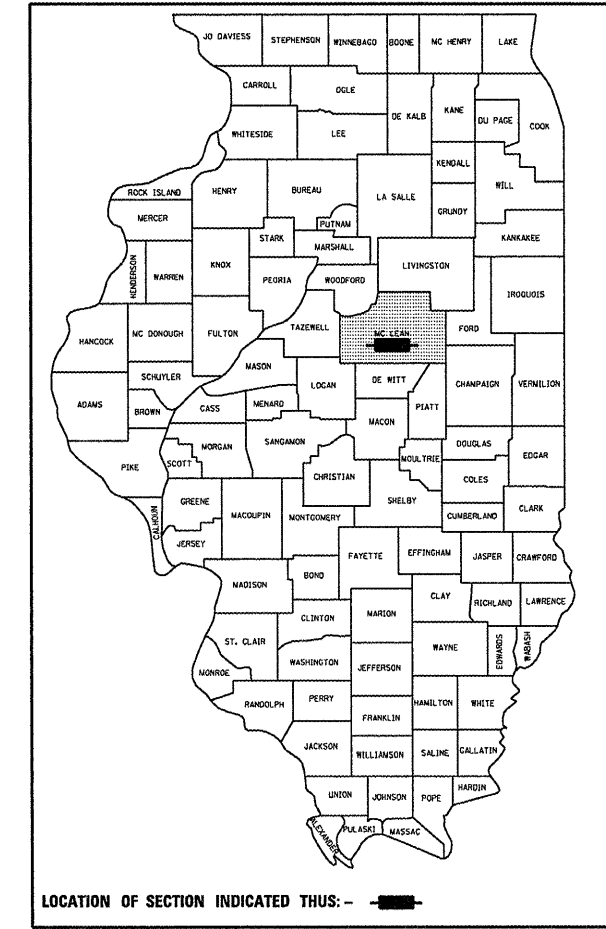


STATE OF ILLINOIS
DEPARTMENT OF TRANSPORTATION
DIVISION OF HIGHWAYS
**PROPOSED
HIGHWAY PLANS**
VARIOUS ROUTES
**SECTION D5 CRACK & JOINT SEAL 2009-1
MCLEAN COUNTY**
C-95-025-08

F.A. RTE.	SECTION	COUNTY	TOTAL SHEETS	SHEET NO.
VAR.	*	MCLEAN	21	1
FED. ROAD DIST. NO.		ILLINOIS	CONTRACT NO. 70736	

* D5 CRACK & JOINT SEAL 2009-1

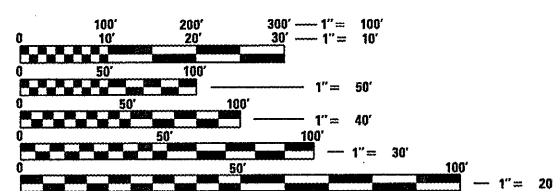
D-95-025-08



FOR INDEX OF SHEETS, SEE SHEET NO. 2
FOR SUMMARY OF QUANTITIES, SEE SHEET NO. 9

CURRENT ADT	
LOCATION #1	2,400 (2008)
LOCATION #2	1,150 (2008)
LOCATION #3	21,700 (2008)
LOCATION #4	2,700 (2007)
LOCATION #5	4,200 (2007)

DESIGN DESIGNATION
N/A



FULL SIZE PLANS HAVE BEEN PREPARED USING STANDARD ENGINEERING SCALES. REDUCED SIZED PLANS WILL NOT CONFORM TO STANDARD SCALES. IN MAKING MEASUREMENTS ON REDUCED PLANS, THE ABOVE SCALES MAY BE USED.

J.U.L.I.E.
JOINT UTILITY LOCATION INFORMATION FOR EXCAVATION
1-800-892-0123
OR 811

PROJECT ENGINEER: KEVIN TRAPP
SQUAD LEADER: JEFF SHERER
DESIGNER: RANDY AUSTIN
PHONE: (217)465-4181
CONTRACT NO. 70736

CRACK & JOINT SEALING - VARIOUS LOCATIONS

FOR LOCATION MAPS, SEE SHEETS NO. 3-7

FOR TOTAL & NET LENGTHS, SEE SHEETS NO. 3-7

STATE OF ILLINOIS
DEPARTMENT OF TRANSPORTATION
DIVISION OF HIGHWAYS

SUBMITTED 10/14/2008
Joseph E. O'Connell
DEPUTY DIRECTOR OF HIGHWAYS, REGION THREE ENGINEER

December 5, 2008
Eric E. Harm
INTERIM ENGINEER OF DESIGN AND ENVIRONMENT

December 5, 2008
Christine M. Reed
DIRECTOR OF HIGHWAYS, CHIEF ENGINEER

**PRINTED BY THE AUTHORITY
OF THE STATE OF ILLINOIS**

DATE = 10/16/2008
FILE NAME = c:\p\9\hwy\70736\cond\hwy\70736-dht-cover.dgn
PLOT SCALE = 1/8" = 1' IN.
USER NAME = eustar1