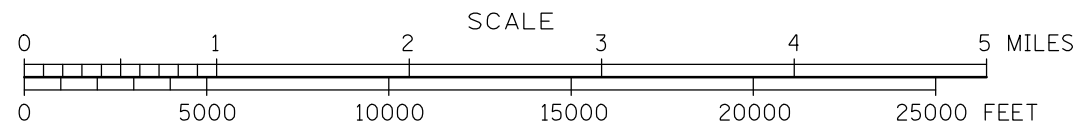
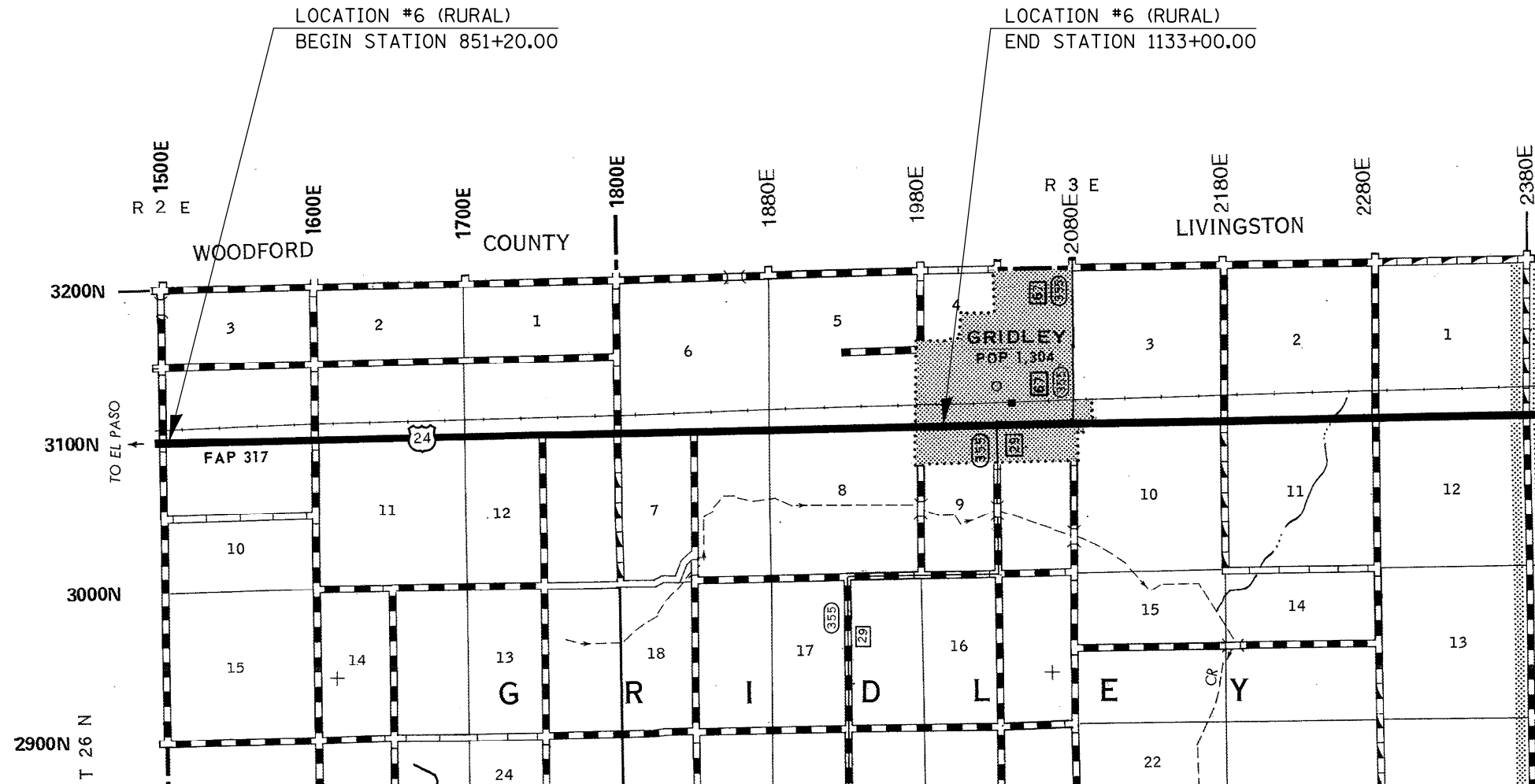


# LOCATION #5 – FAP 317 (US 24) FROM WOODFORD COUNTY LINE TO GRIDLEY (RURAL 2-LANE) MCLEAN COUNTY



**TOTAL & NET LENGTH OF LOCATION #5 = 28,180.00 FEET = 5.337 MILES**

FILE NAME =	USER NAME = austinr1	DESIGNED - RLA	REVISED -	<b>STATE OF ILLINOIS DEPARTMENT OF TRANSPORTATION</b>	<b>LOCATION MAPS</b>				F.A. RTE.	SECTION	COUNTY	TOTAL SHEETS	SHEET NO.
ct\projects\d570736\cad\sheets\d570736-sh1-plan.dgn		DRAWN - SAME	REVISED -						VAR.	D5 CRACK & JOINT SEAL 2009-1	MCLEAN	21	7
		CHECKED - JMS	REVISED -						CONTRACT NO. 70736				
		DATE - 08/2008	REVISED -						FED. ROAD DIST. NO.	ILLINOIS	FED. AID PROJECT		
								SCALE : N/A	SHEET NO.	OF SHEETS	STA.	TO STA.	