

STATE OF ILLINOIS
DEPARTMENT OF TRANSPORTATION

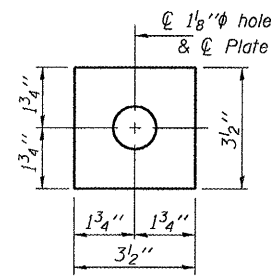
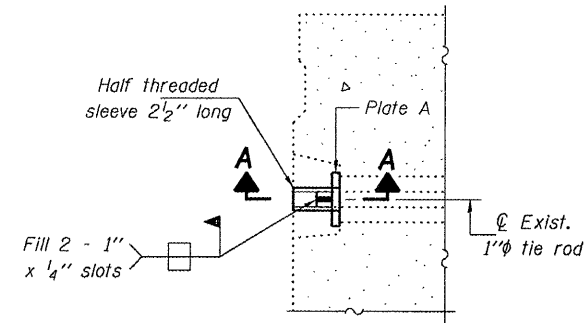
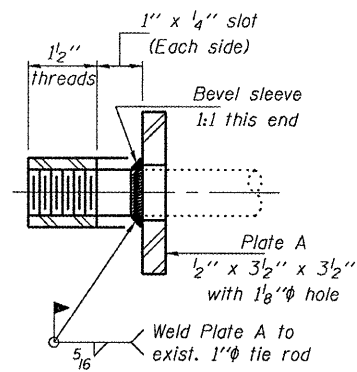


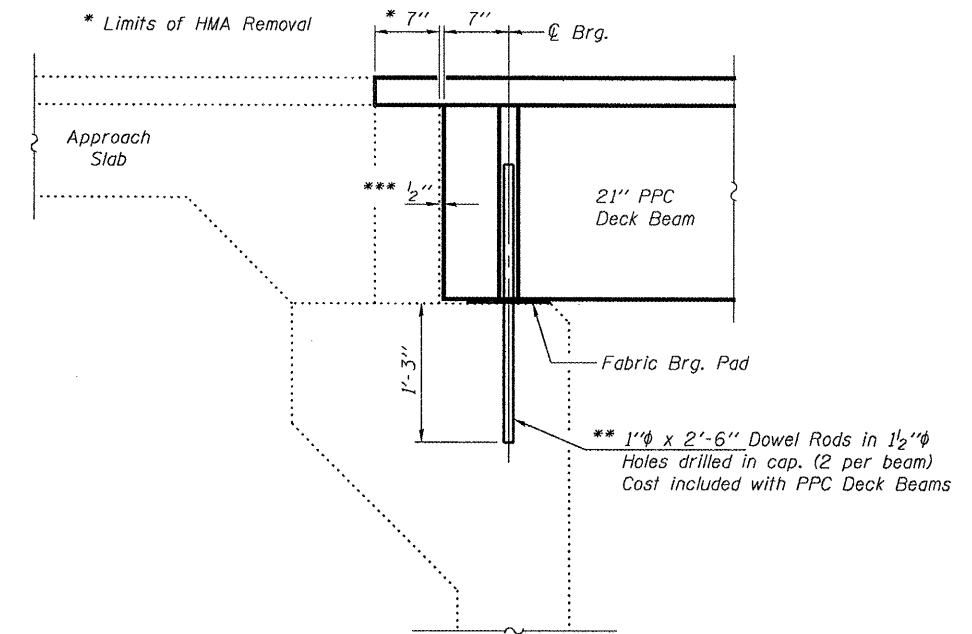
PLATE A
(5 Required)



DETAIL A



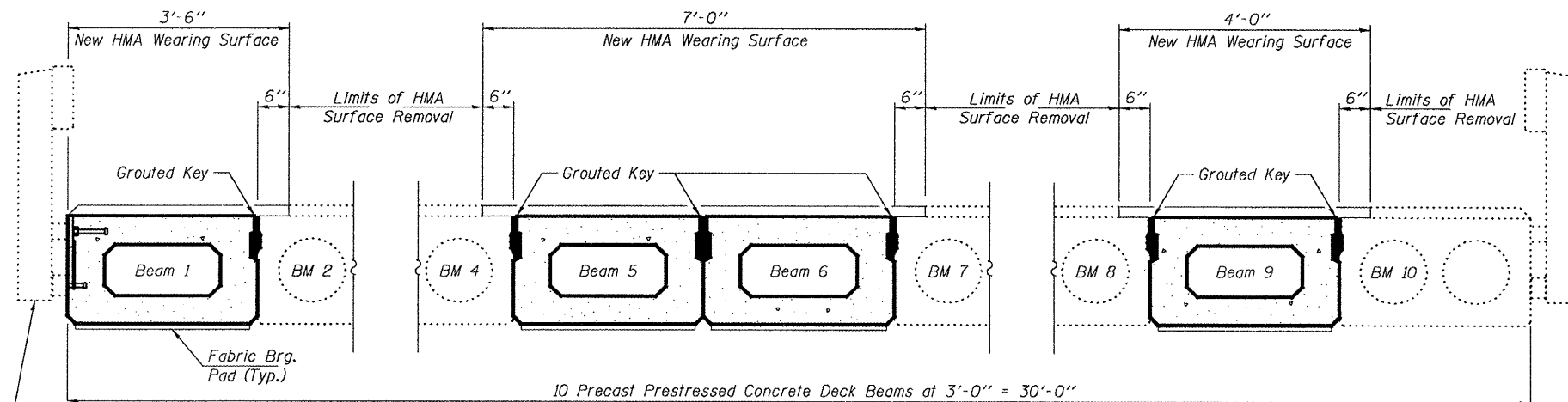
SECTION A-A
(5 Required)



TYPICAL SECTION AT ABUTMENTS
(Horizontal dimensions at right L's)

** Existing dowel rods are to be burned off, ground flush, and sealed with epoxy prior to placement of new beams. Cost included in Removal of Existing PPC Deck Beams. After beams have been erected holes shall be drilled into cap and dowel rods placed. Dowel holes shall be filled with non-shrink grout to top of beam and allowed to cure a minimum of 24 hours prior to grouting the shear keys.

*** Joint shall be filled with non-shrink grout. Dimension may vary to accommodate tolerance in beam lengths.



PARTIAL CROSS SECTION
(Looking North)

Existing Railing to be removed, stored, & re-erected. See sheet 5 of 5 for additional details.

DESIGNED	AJB
CHECKED	GGH
DRAWN	Steffen
CHECKED	AJB GGH

OCTOBER 31, 2008
EXAMINED *Carl Poyner*
ENGINEER OF STRUCTURAL SERVICES
PASSED *Ralph E. Anderson*
ENGINEER OF BRIDGES AND STRUCTURES

REPAIR DETAILS
SN 092-0176

SHEET NO. 4 5 SHEETS	F.A.S. RTE.	SECTION	COUNTY	TOTAL SHEETS	SHEET NO.
	331	(79-102)2009BBR	VERMILION	16	12
FED. ROAD DIST. NO.			ILLINOIS FED. AID PROJECT		
			CONTRACT NO. 70749		