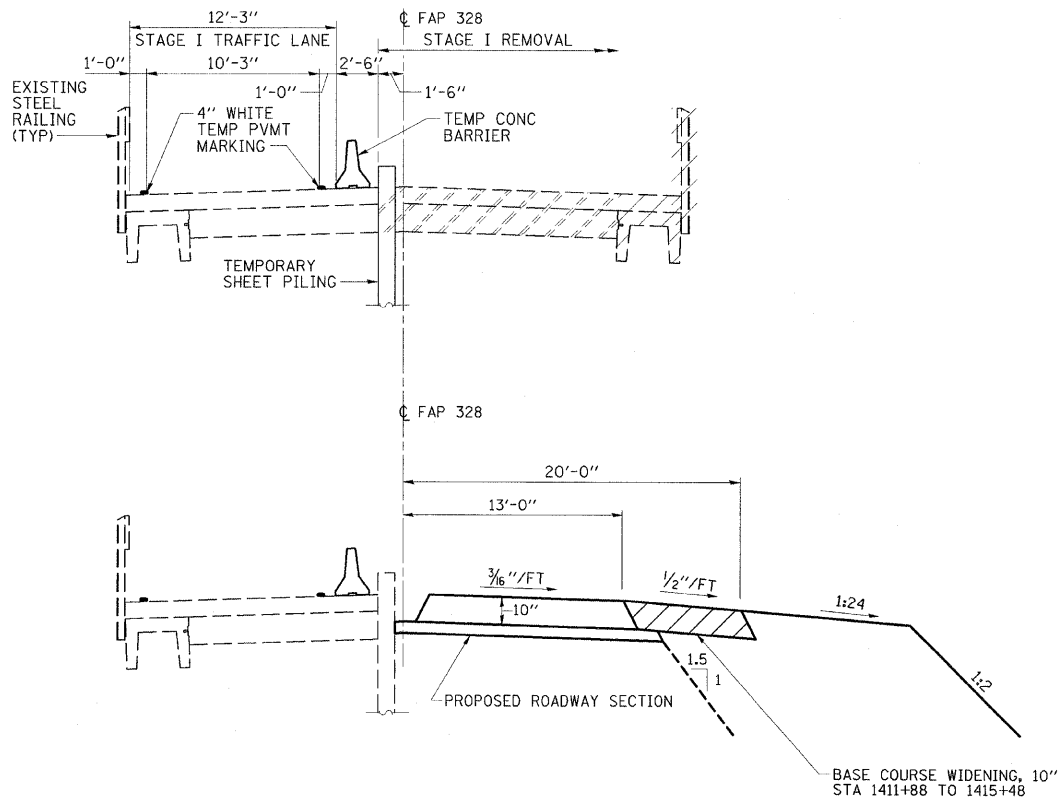
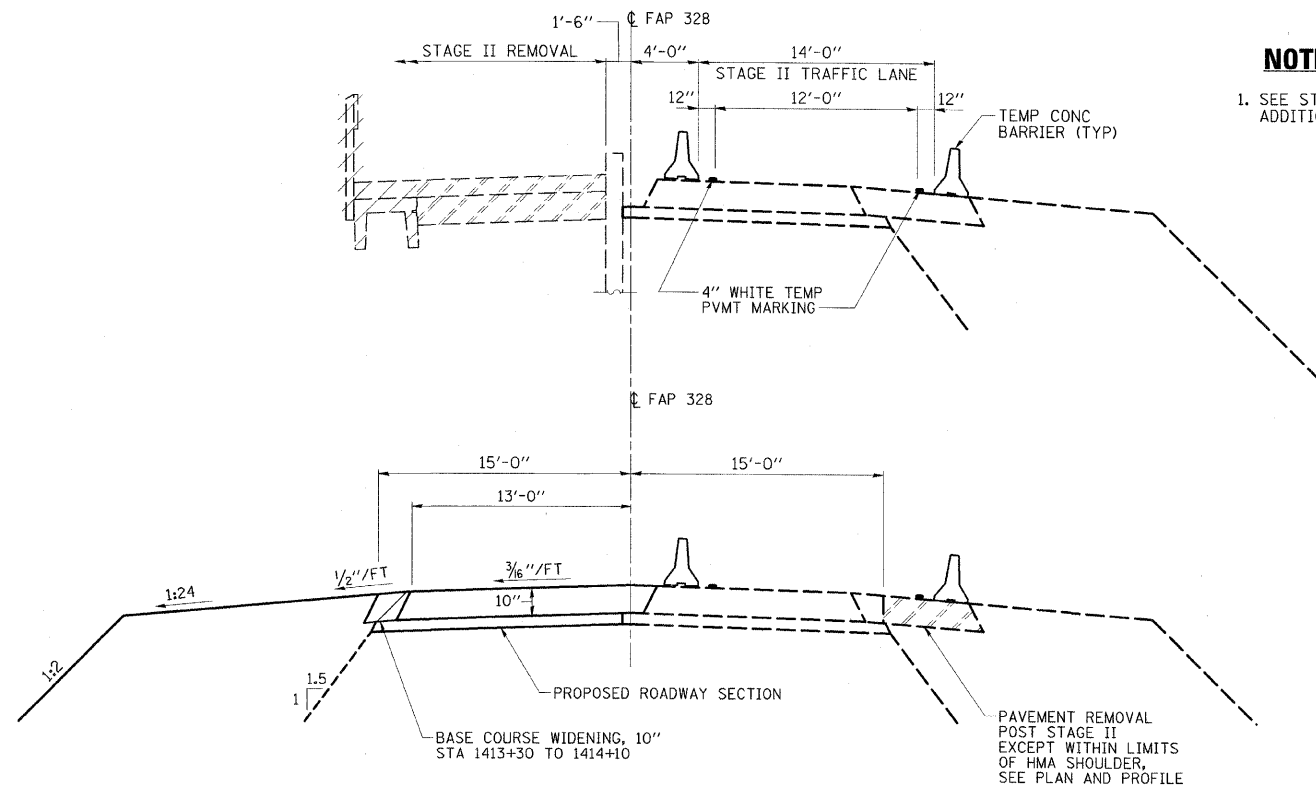




FAP RTE	SECTION	COUNTY	TOTAL SHEETS	SHEET NO.
328	(6BR-1)B-1	CLAY	109	10
STA.		TO STA.		
FED. ROAD DIST. NO.		ILLINOIS FED. AID PROJECT		

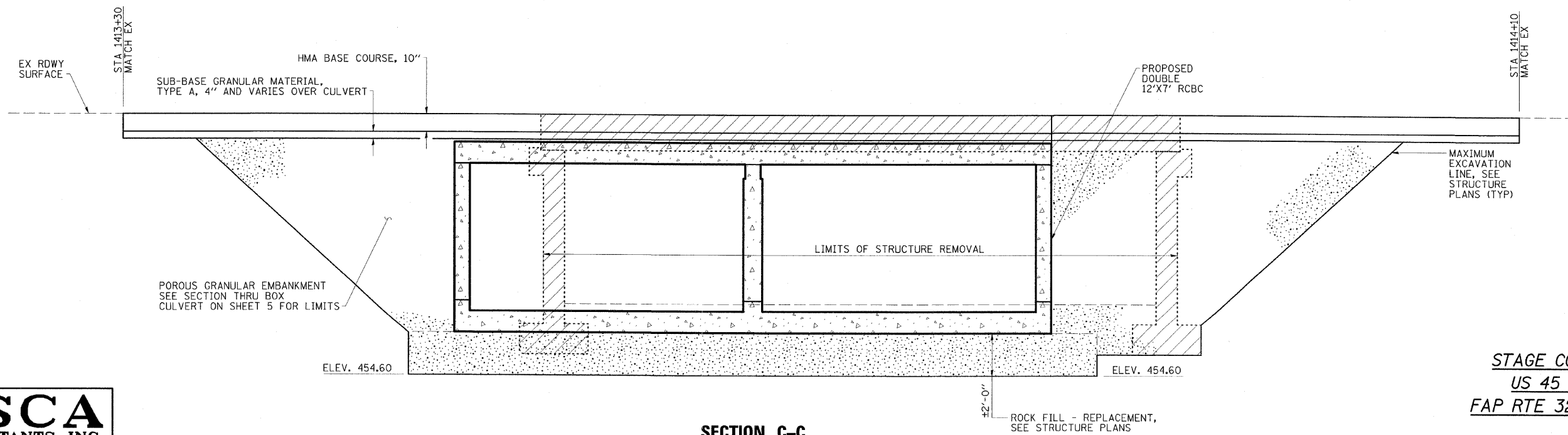


**SECTION A-A
(STAGE I)**



**SECTION B-B
(STAGE II)**

NOTES
1. SEE STRUCTURE PLANS FOR ADDITIONAL SECTIONS.



SECTION C-C

**STAGE CONSTRUCTION DETAILS
US 45 OVER GROVE CREEK
FAP RTE 328 - SECTION (6BR-1)B-1
CLAY COUNTY
STATION 1413+00
STRUCTURE NO. 013-2009**

**ESCA
CONSULTANTS, INC.**

DESIGNED BY:	JMS	05/08
DRAWN BY:	CJ	05/08
CHECKED BY:	MTD	05/08
APPROVED BY:	RDP	08/08

PLOT DATE =
FILE NAME =
PLOT SCALE =
REFERENCE =