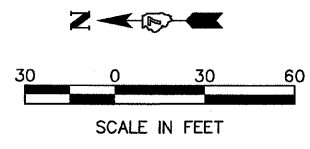


FAP RTE	SECTION	COUNTY	TOTAL SHEETS	SHEET NO.
328	6BR-3)B-1	CLAY	109	33
STA. 1634+00		TO STA. 1643+00		
FED. ROAD DIST. NO.		ILLINOIS FED. AID PROJECT		



- LEGEND**
- TRAFFIC SIGNAL WITH BACKPLATE, SIGNAL DIRECTION INDICATED
  - PAVEMENT REMOVAL
  - BASE COURSE WIDENING, 10"

**SCHEDULE OF QUANTITIES**

**TEMPORARY CONCRETE BARRIER**

STATION TO	STATION	FEET
1638+53	1639+53	100
1636+53	1638+53	200
		TOTAL 300

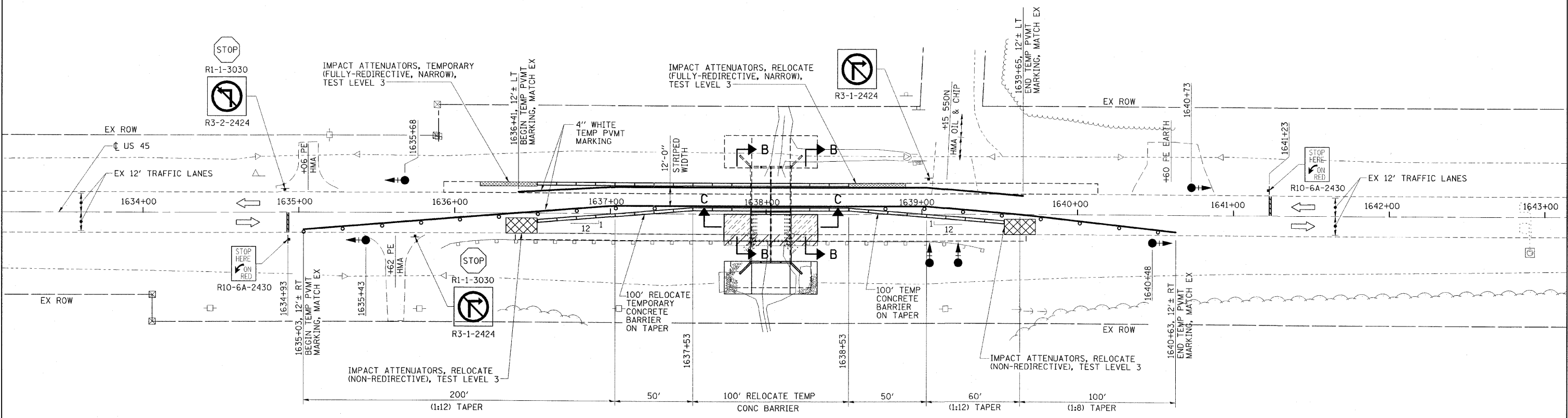
**RELOCATE TEMPORARY CONCRETE BARRIER**

STATION TO	STATION	FEET
1636+53	1638+53	200
		TOTAL 200

- IMPACT ATTENUATORS, RELOCATE (NON-REDIRECTIVE), TEST LEVEL 3 - 2 EACH
- IMPACT ATTENUATORS, TEMPORARY (FULLY-REDIRECTIVE, NARROW), TEST LEVEL 3 - 1 EACH
- IMPACT ATTENUATORS, RELOCATE (FULLY-REDIRECTIVE, NARROW), TEST LEVEL 3 - 1 EACH

**GENERAL NOTES**

1. TRAFFIC CONTROL SHALL BE ERECTED AS SHOWN AND ACCORDING TO "TRAFFIC CONTROL AND PROTECTION, STANDARD 701321."
2. SEE SPECIAL PROVISIONS FOR ADDITIONAL TRAFFIC CONTROL REQUIREMENTS.
3. COORDINATE LOCATION OF SIGNALS WITH FINAL WORK AS DIRECTED BY THE ENGINEER.
4. CONSTRUCT TEMPORARY RUMBLE STRIPS AT LOCATIONS SHOWN ON STANDARD 701321.
5. THE DIMENSION SHOWN ON THE WIDTH RESTRICTION SIGN (W12-1102(O)-48) SHOWN ON STANDARD 701321 SHALL BE 12'-6" FOR STAGE II CONSTRUCTION.
6. ADDITIONAL SIGNAGE AND BARRICADES SHOWN FOR SIDE-ROADS AND ENTRANCES SHALL BE INCLUDED IN THE COST OF STANDARD 701321.



**ESCA**  
CONSULTANTS, INC.

DESIGNED BY:	DAJ	04/08
DRAWN BY:	CJ	04/08
CHECKED BY:	MTD	05/08
APPROVED BY:	RDP	08/08

STAGE II CONSTRUCTION  
US 45 OVER BRANCH OF ELM CREEK  
FAP ROUTE 328 - SECTION (6BR-3)B-1  
CLAY COUNTY  
STATION 1638+03.20  
STRUCTURE NO. 2010

PLOT DATE =  
FILE NAME =  
REFERENCE =