



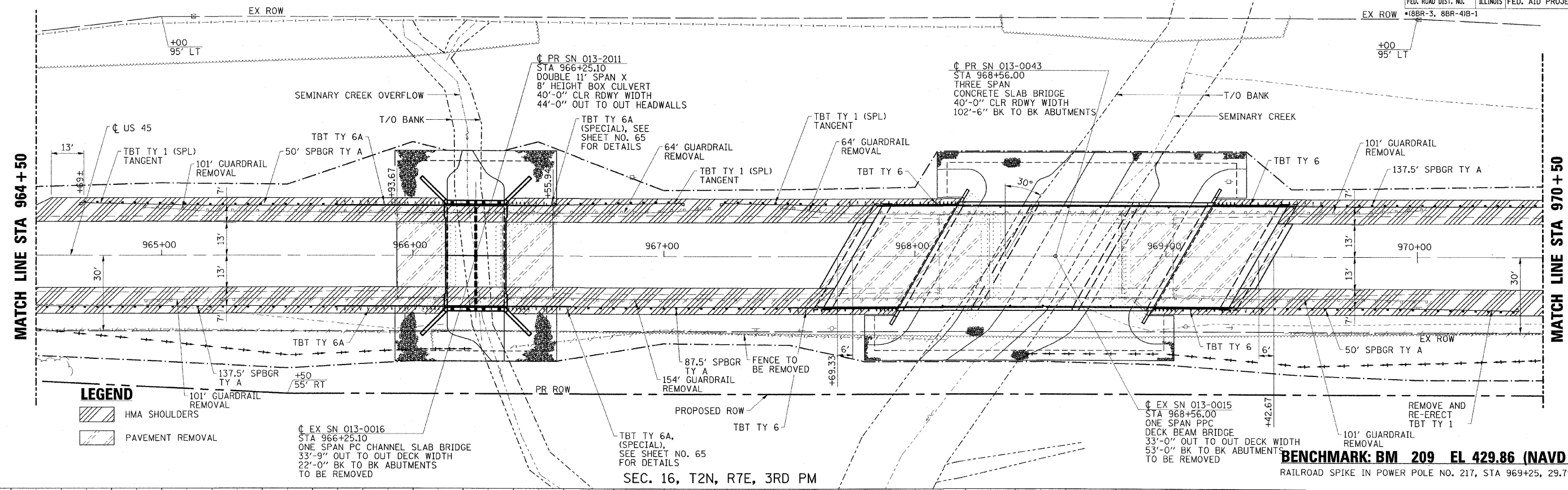
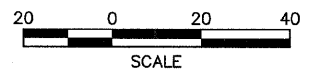
DATE	
BY	
PLANNED	
DESIGNED	
CHECKED	
IN CHARGE	
NO.	

DATE	
BY	
PROFILING	
DESIGNED	
CHECKED	
IN CHARGE	
NO.	

CONTRACT NO. 74107

SEC. 17, T2N, R7E, 3RD PM

FAP RTE	SECTION	COUNTY	TOTAL SHEETS	SHEET NO.
328	*	CLAY	109	58
STA. 964+50		TO STA. 970+50		
FED. ROAD DIST. NO.		ILLINOIS FED. AID PROJECT		
18BR-3, 8BR-4B-1				

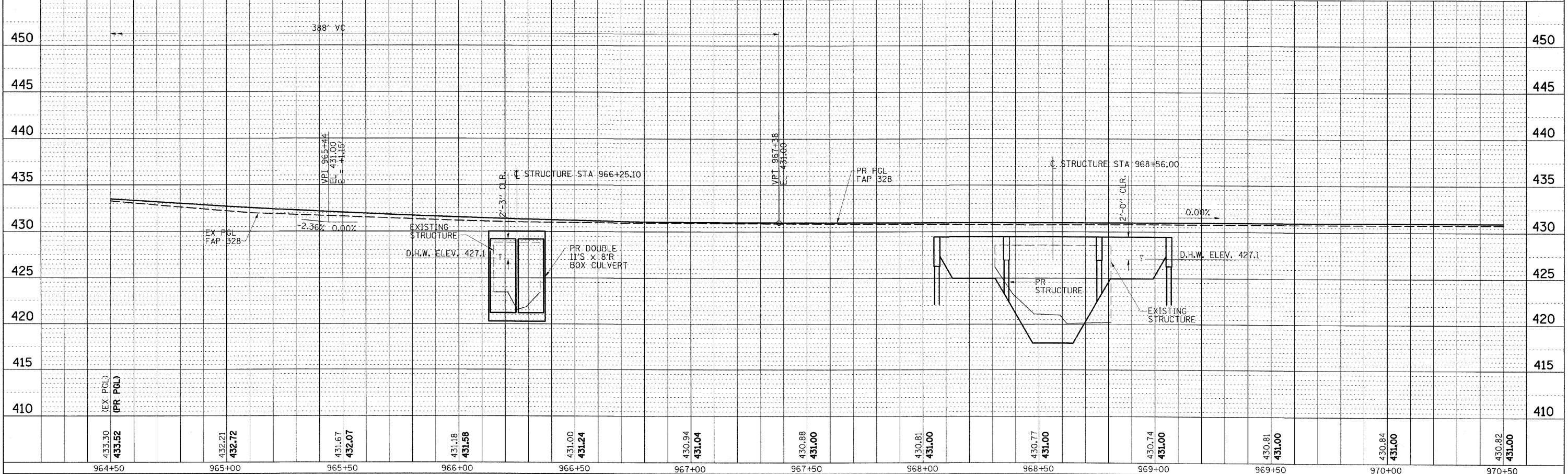


LEGEND

	HMA SHOULDERS
	PAVEMENT REMOVAL

SEC. 16, T2N, R7E, 3RD PM

BENCHMARK: BM 209 EL 429.86 (NAVD 88)
RAILROAD SPIKE IN POWER POLE NO. 217, STA 969+25, 29.7' LT



FAP RTE 328 (US 45) PLAN AND PROFILE
STA 964+50 TO STA 970+50