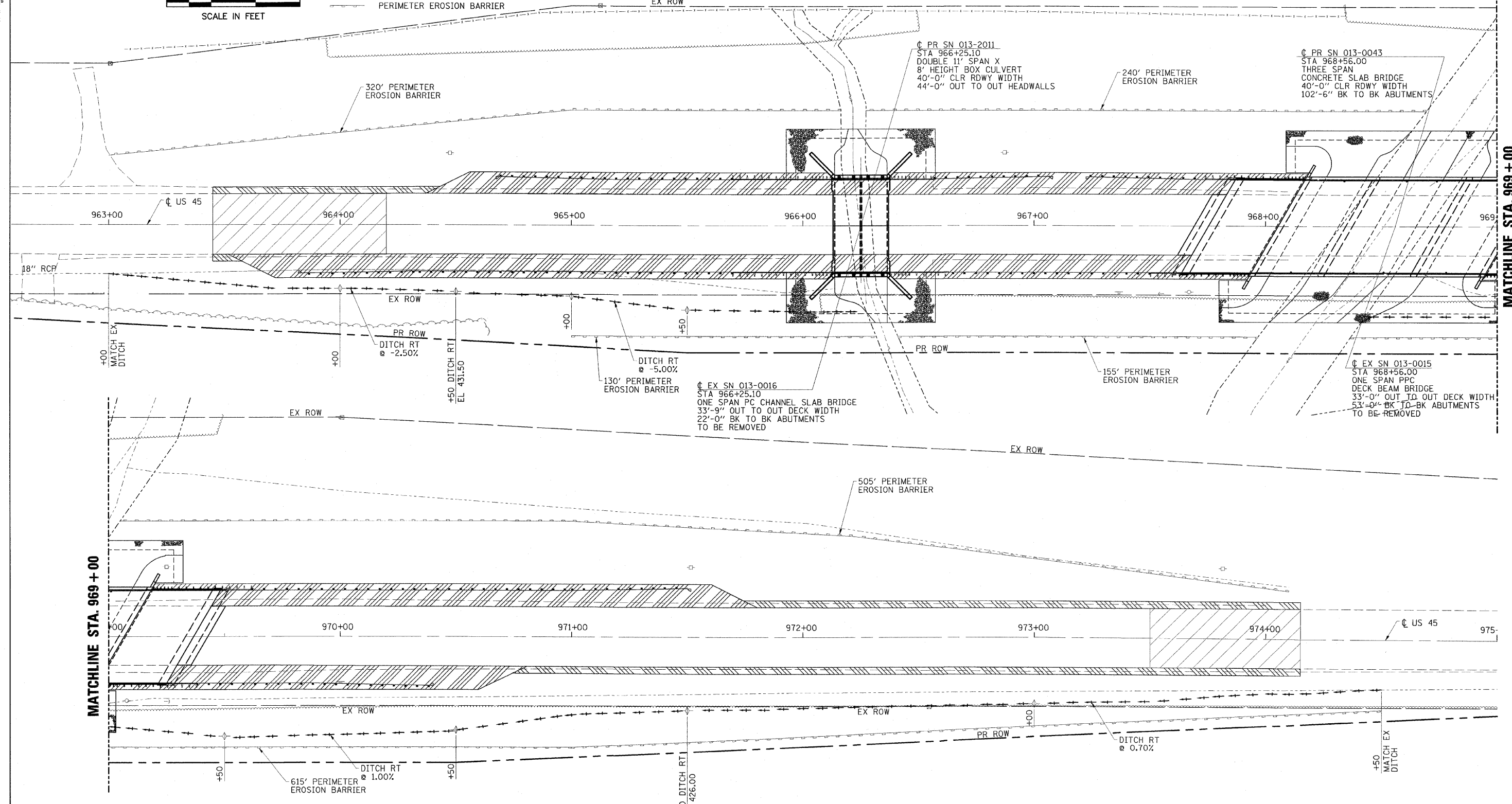


**LEGEND**  
 -◇- TEMPORARY DITCH CHECK  
 - - - PERIMETER EROSION BARRIER

CONTRACT NO. 74107			
FAP RTE	SECTION	COUNTY	TOTAL SHEET NO.
328		CLAY	109 64
STA. 963+00		TO STA. 975+00	
FED. ROAD DIST. NO.	ILLINOIS	FED. AID PROJECT	
*18BR-3, 8BR-4)B-1			



<b>ESCA</b> CONSULTANTS, INC.		
DESIGNED BY:	DAJ	04/08
DRAWN BY:	HAS	04/08
CHECKED BY:	MTD	05/08
APPROVED BY:	RDP	08/08

**EROSION CONTROL AND DRAINAGE PLAN**  
**US 45 OVER SEMINARY CREEK & OVERFLOW**  
**FAP ROUTE 328 - SECTIONS (8BR-3, 8BR-4)B-1**  
**CLAY COUNTY**