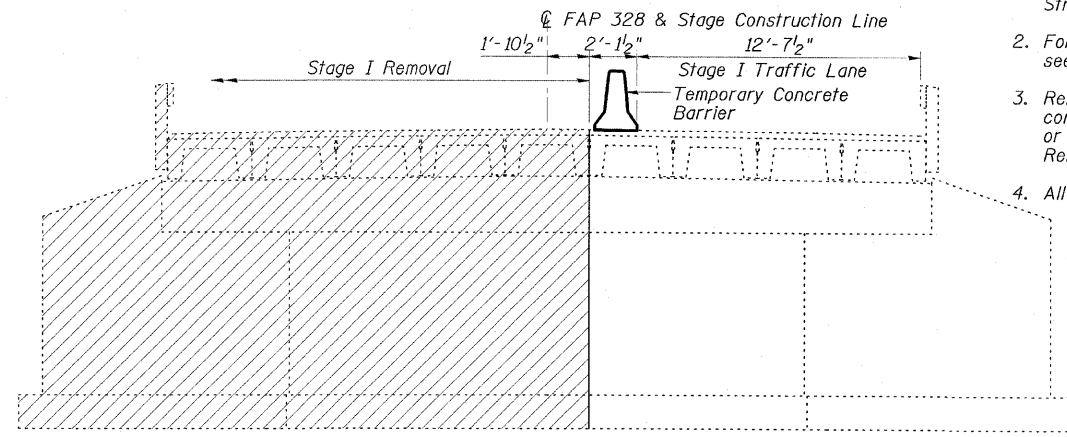


STATE OF ILLINOIS
DEPARTMENT OF TRANSPORTATION

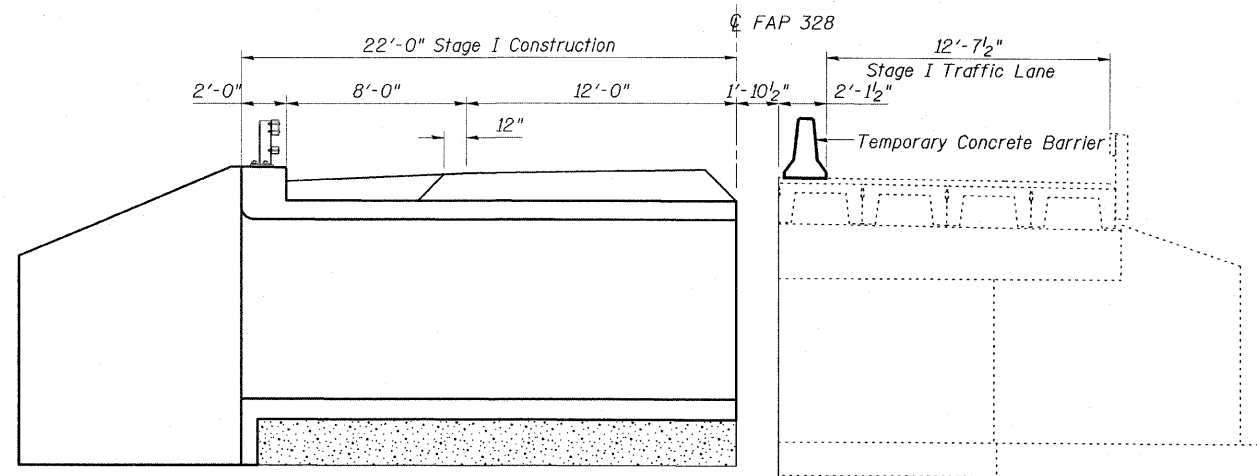
ROUTE NO.	SECTION	COUNTY	STATE SHEETS	SHEET NO.	SHEET NO. 2
FAP 328	*	CLAY	109	67	7 SHEETS
FED. ROAD DIST. NO.		ILL. NUMBER	FED. AID PROJECT-		
			Contract #74107		(8BR-3)B-1

STAGE CONSTRUCTION NOTES

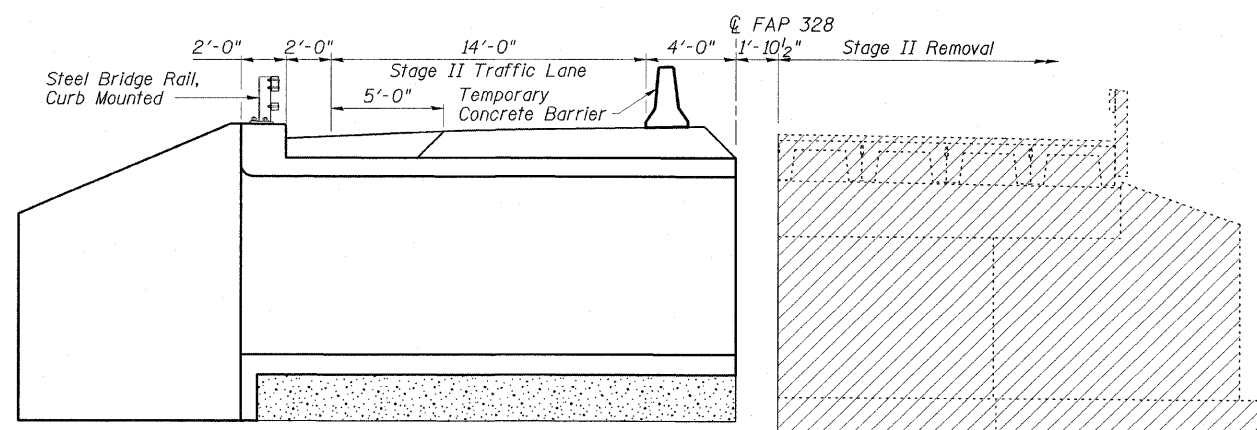
- Hatched areas indicate Removal of Existing Structures.
- For details of Temporary Concrete Barrier, see Sht. No. 6 of 7.
- Removal of existing bridge rail, precast concrete units, approach caps, and existing or new subseal materials is included with Removal of Existing Structures.
- All sections are looking North.



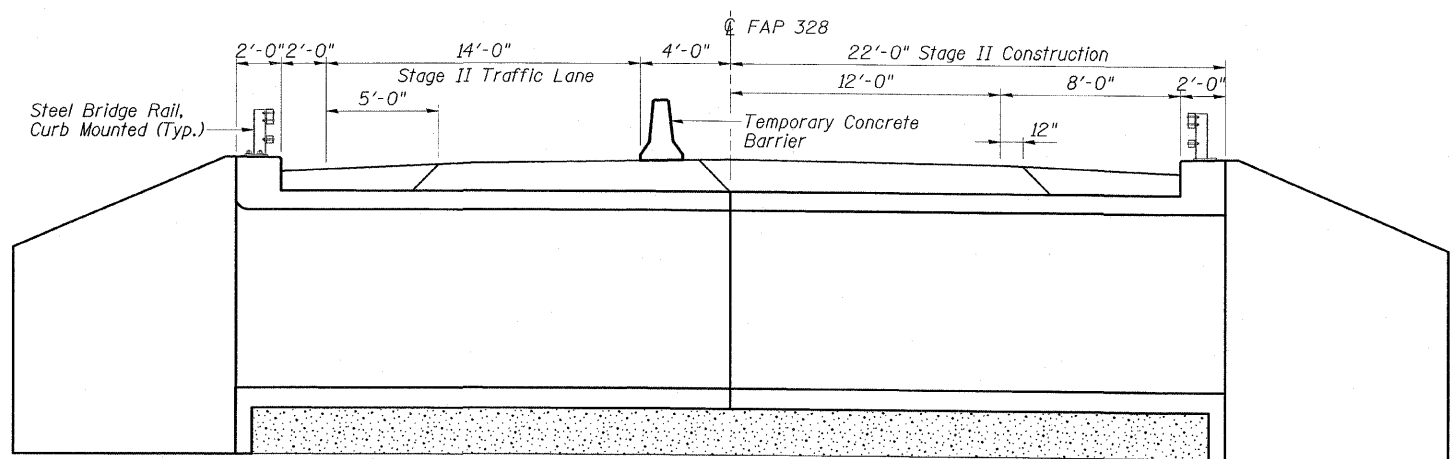
STAGE I REMOVAL



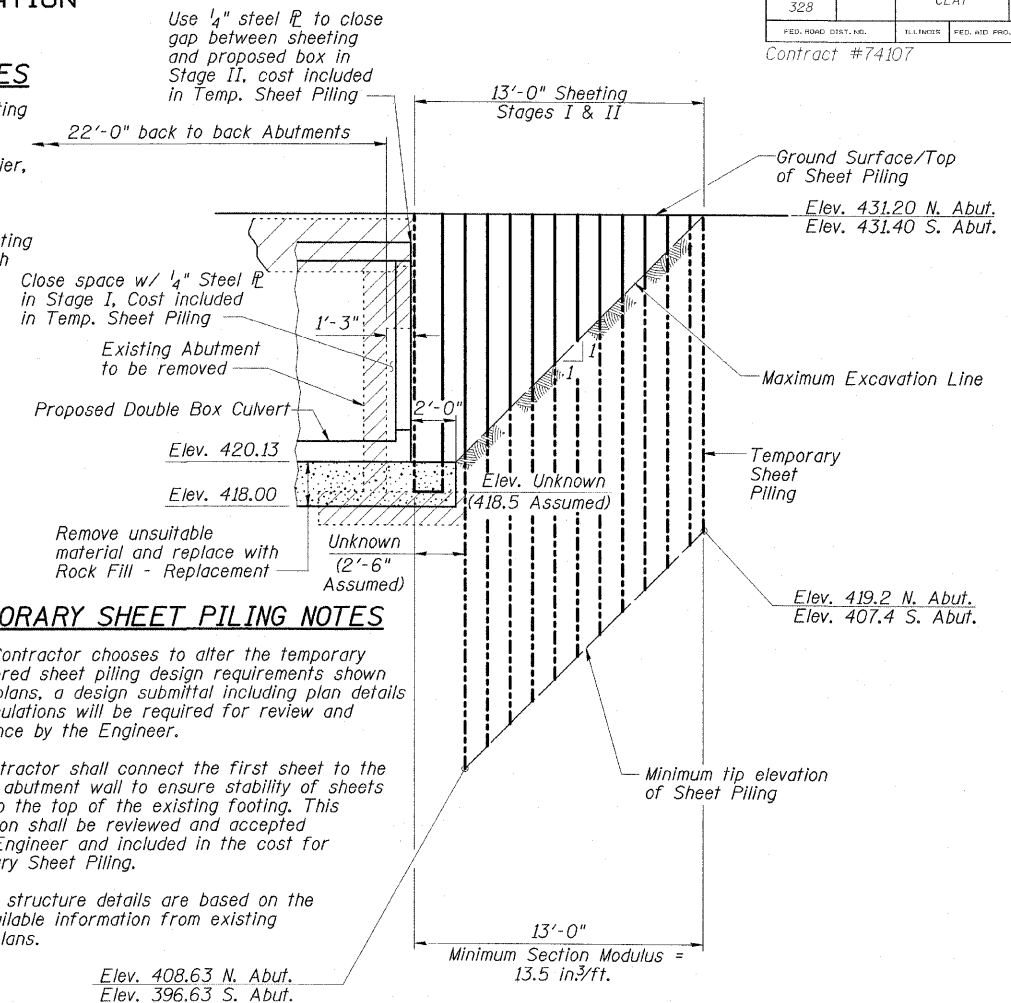
STAGE I CONSTRUCTION



STAGE II REMOVAL



STAGE II CONSTRUCTION



TEMPORARY SHEET PILING NOTES

- If the Contractor chooses to alter the temporary cantilevered sheet piling design requirements shown on the plans, a design submittal including plan details and calculations will be required for review and acceptance by the Engineer.
- The Contractor shall connect the first sheet to the existing abutment wall to ensure stability of sheets driven to the top of the existing footing. This connection shall be reviewed and accepted by the Engineer and included in the cost for Temporary Sheet Piling.
- Existing structure details are based on the best available information from existing bridge plans.

TEMPORARY SHEET PILING

ESCA
CONSULTANTS, INC.

DESIGNED BY:	FMA	03/08
DRAWN BY:	CJ	03/08
CHECKED BY:	ELH	05/08
APPROVED BY:	RDP	08/08

STAGE CONSTRUCTION DETAILS
US 45 OVER SEMINARY CREEK OVERFLOW
FAP ROUTE 328 - SECTION (8BR-3)B-1
CLAY COUNTY
STATION 966+25.10
STRUCTURE NO. 013-2011