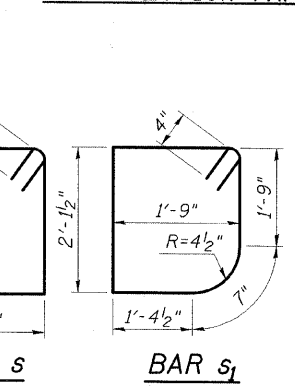
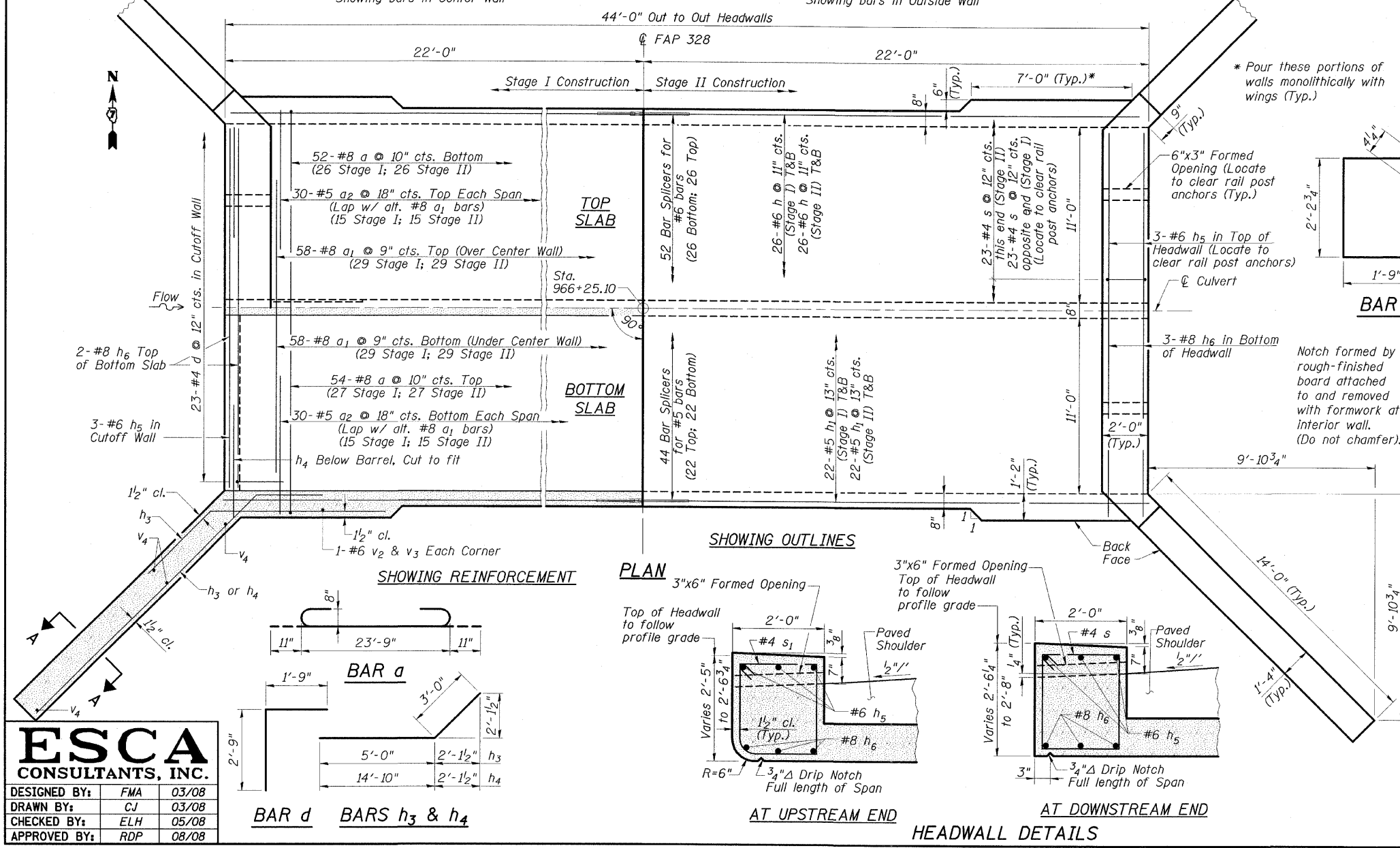
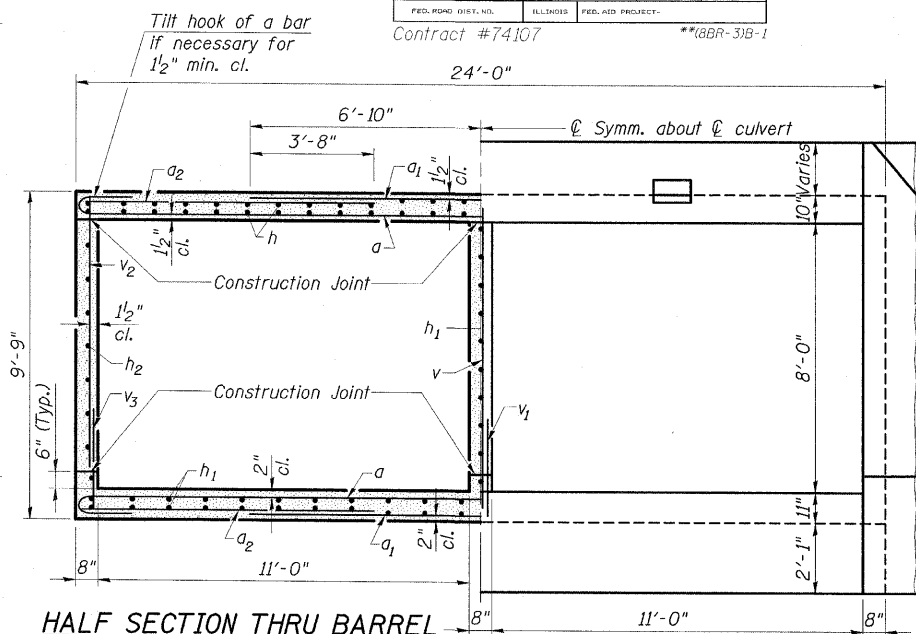
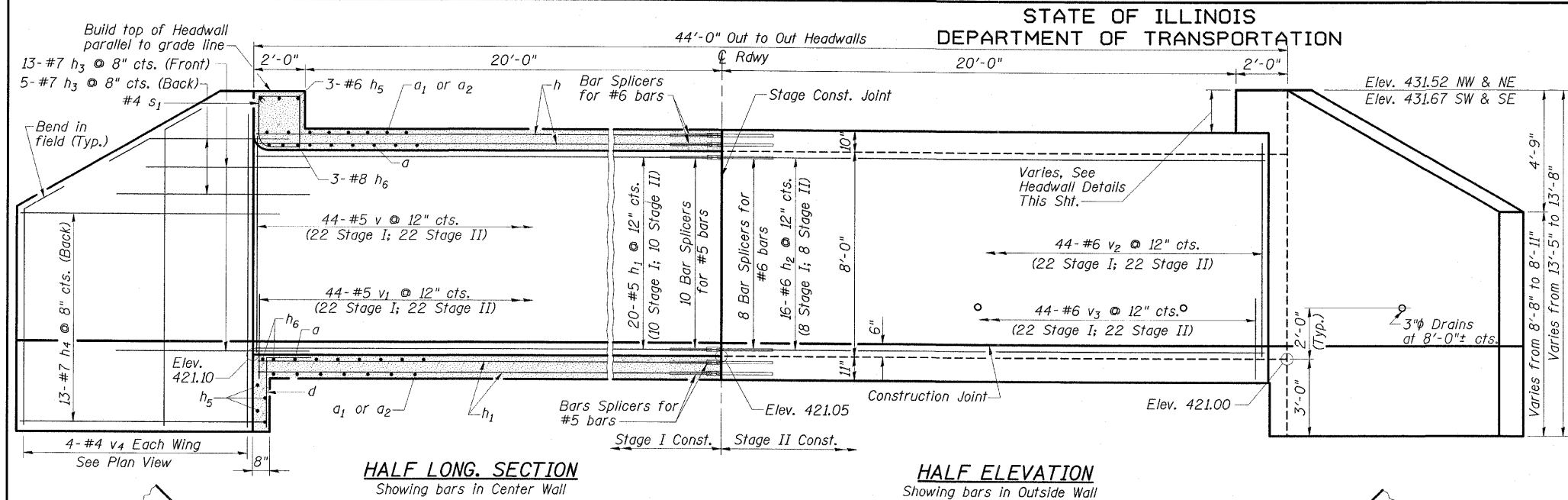


STATE OF ILLINOIS
DEPARTMENT OF TRANSPORTATION

| | | | | |
|---------------------|---------|--------|-----------|-------------|
| ROUTE NO. | SECTION | COUNTY | POST MILE | SHEET NO. |
| FAP 328 | ** | CLAY | 109 | 68 |
| FED. ROAD DIST. NO. | | | | ILLINOIS |
| FED. AID PROJECT | | | | **88R-31B-1 |

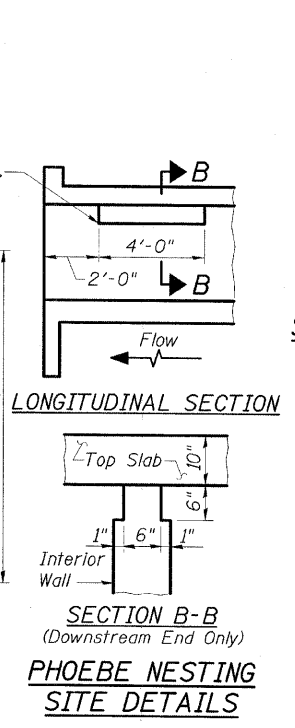
Contract #74107



BILL OF MATERIAL

| Bar | No. | Size | Length | Shape |
|----------------|-----|------|---------|-------|
| a | 106 | #8 | 25'-7" | |
| a ₁ | 116 | #8 | 13'-8" | |
| a ₂ | 60 | #5 | 8'-9" | |
| d | 46 | #4 | 4'-6" | |
| h | 104 | #6 | 21'-9" | |
| h ₁ | 108 | #5 | 21'-9" | |
| h ₂ | 32 | #6 | 21'-9" | |
| h ₃ | 72 | #7 | 8'-0" | |
| h ₄ | 52 | #7 | 17'-10" | |
| h ₅ | 12 | #6 | 22'-5" | |
| h ₆ | 10 | #8 | 24'-9" | |
| s | 23 | #4 | 8'-8" | |
| s ₁ | 23 | #4 | 8'-3" | |
| v | 44 | #5 | 8'-2" | |
| v ₁ | 44 | #5 | 2'-6" | |
| v ₂ | 92 | #6 | 8'-2" | |
| v ₃ | 92 | #6 | 2'-6" | |
| v ₄ | 16 | #4 | 12'-5" | |

Concrete Box Culverts Cu. Yd. 139
Reinforcement Bars Pound 25,550
Bar Splicers Each 122



BOX CULVERT DETAILS
US 45 OVER SEMINARY CREEK OVERFLOW
FAP ROUTE 328 - SECTION (8BR-3)B-1
CLAY COUNTY
STATION 966+25.10
STRUCTURE NO. 013-2011

ESCA
CONSULTANTS, INC.

DESIGNED BY: FMA 03/08
DRAWN BY: CJ 03/08
CHECKED BY: ELH 05/08
APPROVED BY: RDP 08/08