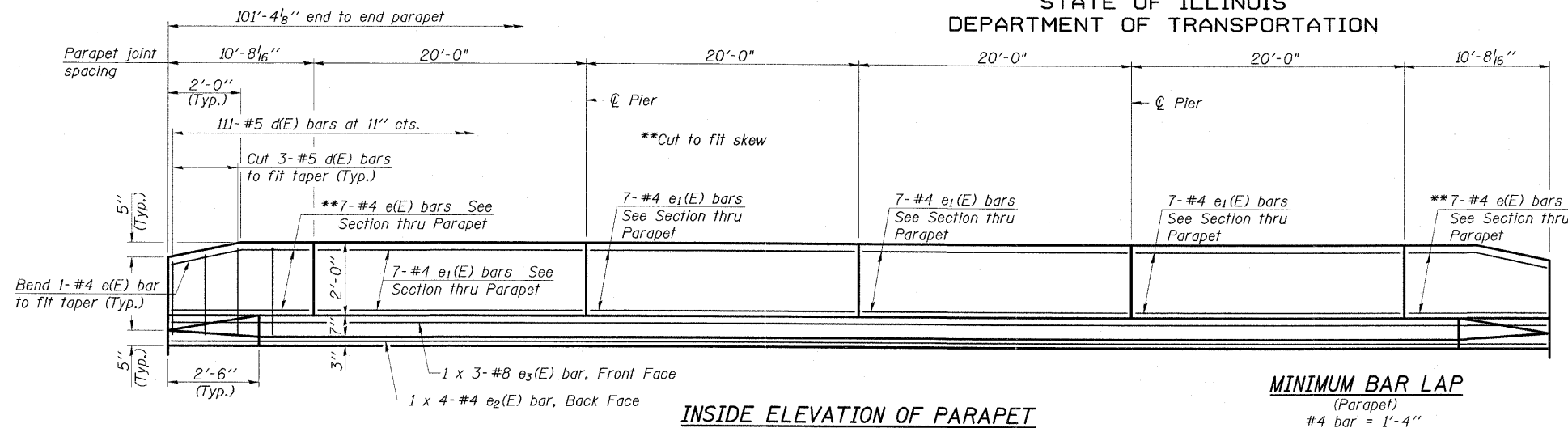


STATE OF ILLINOIS
DEPARTMENT OF TRANSPORTATION

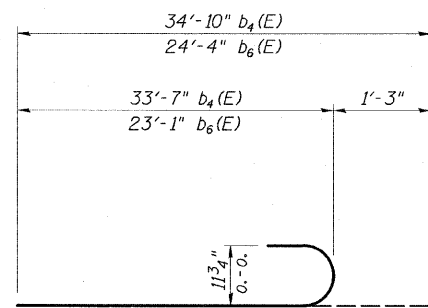
| | | | | |
|---------------------|---------|----------|------------------|-----------|
| ROUTE NO. | SECTION | COUNTY | TOTAL SHEETS | SHEET NO. |
| FAP 328 | * | CLAY | 109 | 86 |
| FED. ROAD DIST. NO. | | ILLINOIS | FED. AID PROJECT | |
| | | | | |

CONTRACT NO. 74107 * (8BR-4)B-1

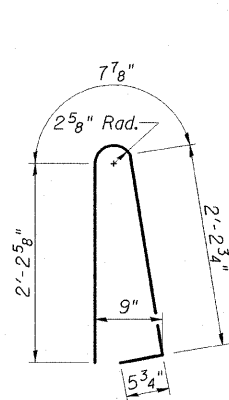


INSIDE ELEVATION OF PARAPET

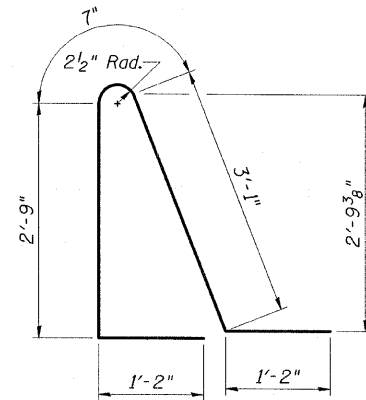
MINIMUM BAR LAP
(Parapet)
#4 bar = 1'-4"
#8 bar = 3'-5"



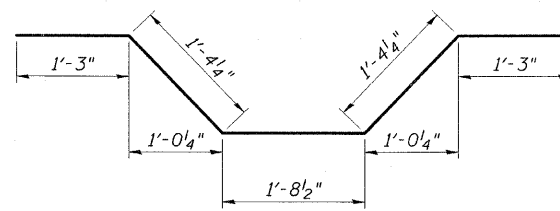
BARS b₄(E) & b₆(E)



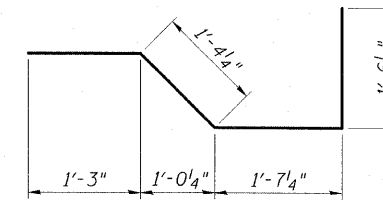
BAR d(E)



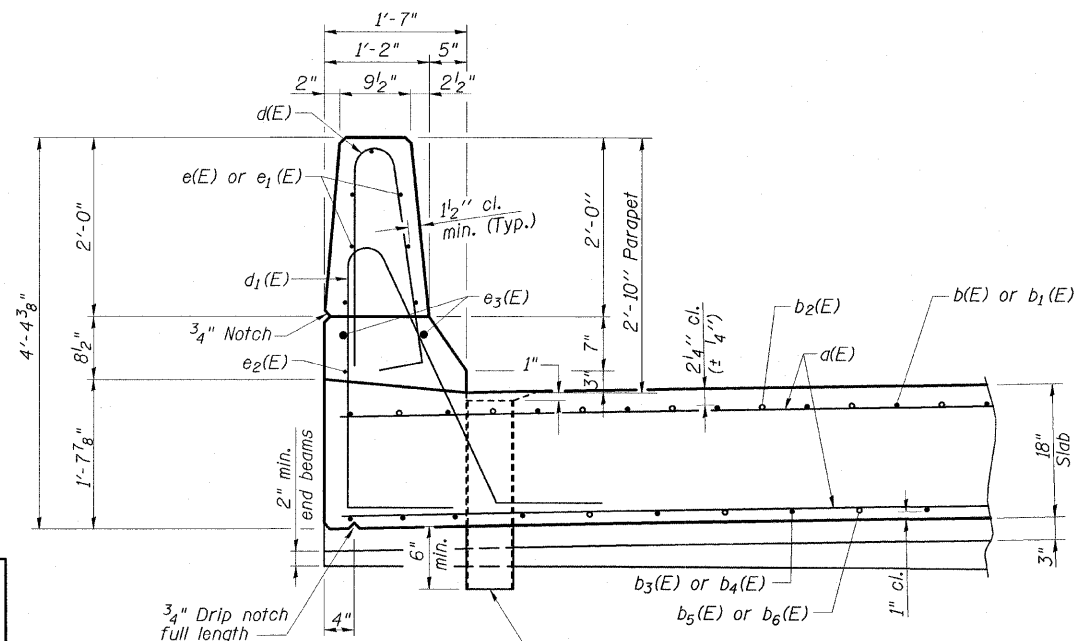
BAR d₁(E)



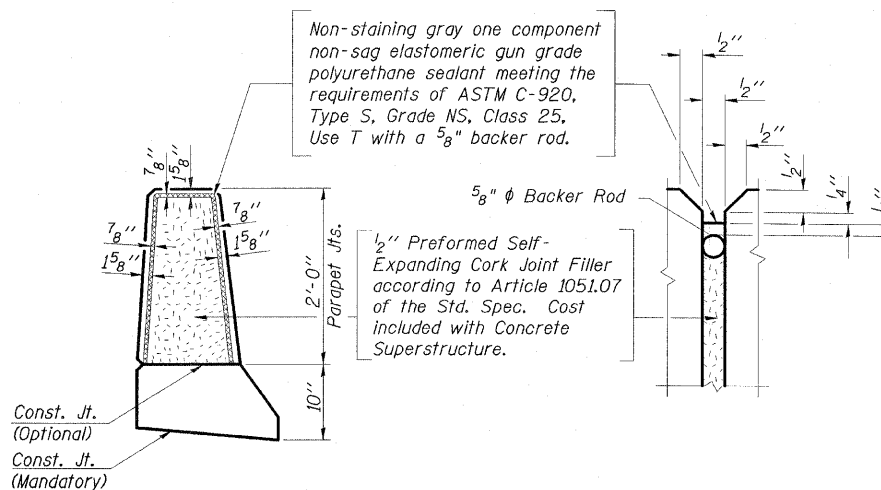
BAR x(E)



BAR x₁(E)



SECTION THRU PARAPET



PARAPET JOINT DETAILS

**SUPERSTRUCTURE
BILL OF MATERIAL**

| Bar | No. | Size | Length | Shape |
|----------------------------------|-----|---------|---------|-------|
| d(E) | 294 | #5 | 21'-3" | — |
| d ₁ (E) | 24 | #5 | 24'-6" | — |
| b(E) | 88 | #8 | 44'-0" | — |
| b ₁ (E) | 88 | #5 | 10'-6" | — |
| b ₂ (E) | 84 | #9 | 13'-2" | — |
| b ₃ (E) | 34 | #9 | 41'-0" | — |
| b ₄ (E) | 68 | #9 | 34'-10" | — |
| b ₅ (E) | 26 | #9 | 24'-9" | — |
| b ₆ (E) | 52 | #9 | 24'-4" | — |
| d(E) | 222 | #5 | 5'-7" | ⏏ |
| d ₁ (E) | 222 | #5 | 8'-9" | ⏏ |
| e(E) | 28 | #4 | 10'-4" | — |
| e ₁ (E) | 56 | #4 | 19'-8" | — |
| e ₂ (E) | 8 | #4 | 26'-4" | — |
| e ₃ (E) | 6 | #8 | 36'-0" | — |
| x(E) | 88 | #5 | 6'-11" | — |
| x ₁ (E) | 88 | #5 | 5'-9" | — |
| Reinforcement Bars, Epoxy Coated | | Pound | 47,610 | |
| Concrete Superstructure | | Cu. Yd. | 277.6 | |

Bars indicated thus: 1x3-#8 etc. indicates 1 line of bars with 3 lengths per line.
For details of Bar Splicers, see Sheet 15 of 18.
Name Plate to be mounted on inside face of parapet, see Sheet 1 of 18.

SUPERSTRUCTURE DETAILS
US 45 OVER SEMINARY CREEK
FAP ROUTE 328 - SECTION (8BR-4)B-1
CLAY COUNTY
STATION 968+56.00
STRUCTURE NO. 013-0043

ESCA
CONSULTANTS, INC.

DESIGNED BY: MTD 04/08
DRAWN BY: DWH 04/08
CHECKED BY: DAJ 05/08
APPROVED BY: RDP 08/08