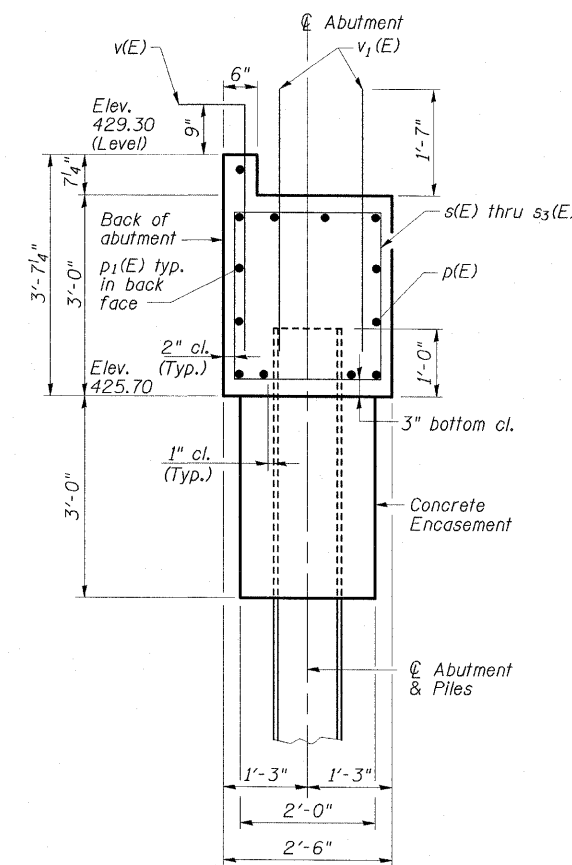
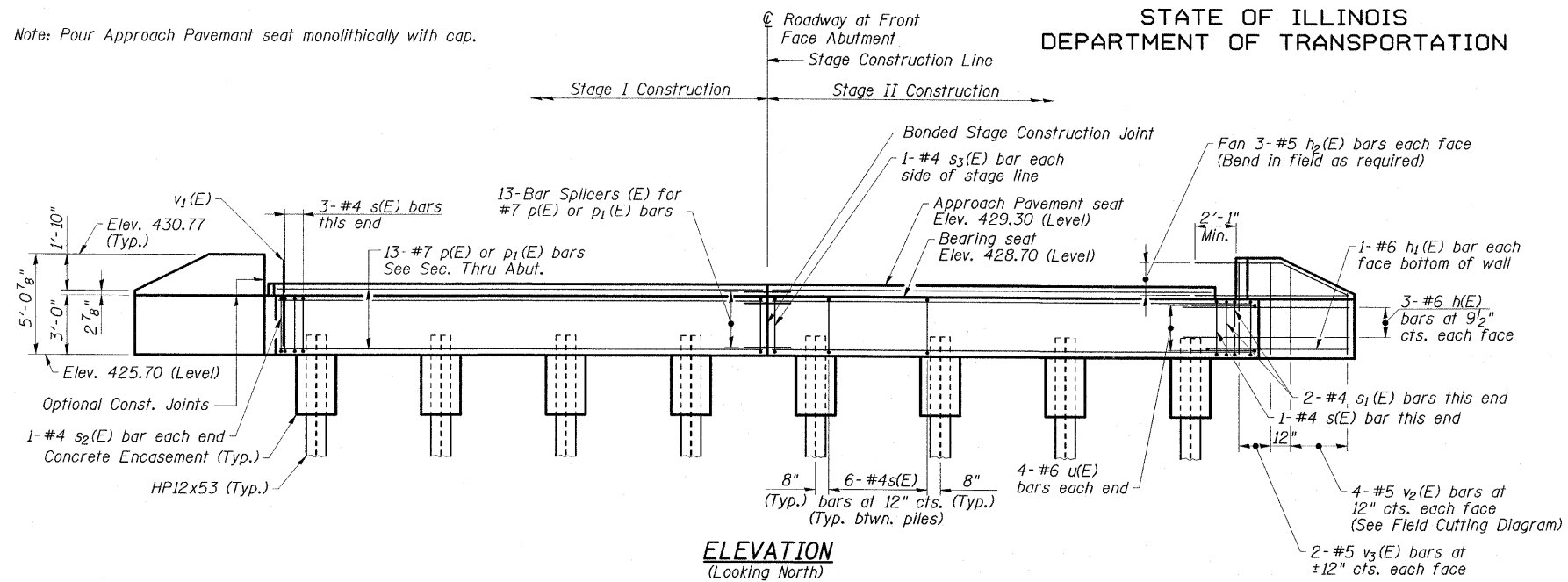


STATE OF ILLINOIS
DEPARTMENT OF TRANSPORTATION

ROUTE NO. FAP 328	SECTION *	COUNTY CLAY	SHEET NO. 109	SHEET NO. 88	SHEET NO. 11 18 SHEETS
FED. ROAD DIST. NO.		ILLINOIS	FED. AID PROJECT (8BR-4)B-1		CONTRACT NO. 74107

Note: Pour Approach Pavement seat monolithically with cap.

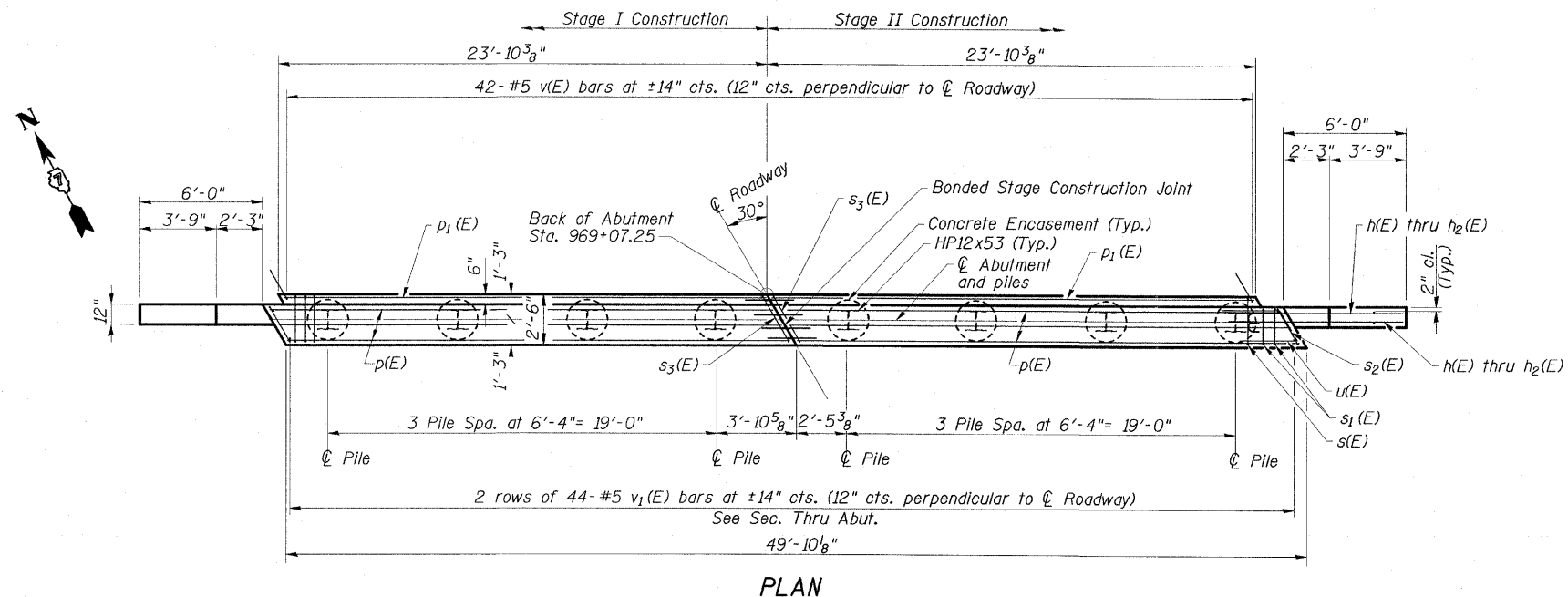


SECTION THRU
NORTH ABUTMENT

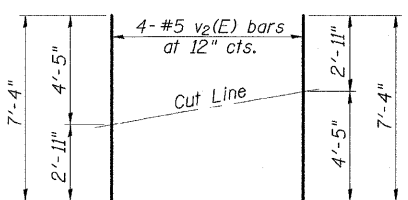
NORTH ABUTMENT
BILL OF MATERIAL

Bar	No.	Size	Length	Shape
h(E)	12	#6	8'-5"	—
h1(E)	4	#6	8'-2"	—
h2(E)	12	#5	8'-5"	—
p(E)	16	#7	24'-7"	—
p1(E)	10	#7	23'-6"	—
s(E)	46	#4	10'-3"	□
s1(E)	2	#4	9'-3"	□
s2(E)	2	#4	9'-9"	□
s3(E)	2	#4	10'-11"	□
u(E)	8	#6	7'-6"	—
v(E)	42	#5	4'-9"	—
v1(E)	88	#5	3'-11"	—
v2(E)	8	#5	7'-4"	—
v3(E)	8	#5	4'-8"	—
Structure Excavation			Cu. Yd.	80
Concrete Structures			Cu. Yd.	16.3
Reinforcement Bars, Epoxy Coated			Pound	2705
Furnishing Steel Piles, HP12x53			Lin. Ft.	619.5
Driving Piles			Lin. Ft.	619.5
Test Pile, Steel HP12x53			Each	1
Concrete Encasement			Cu. Yd.	2.8
Porous Granular Embankment, Special			Cu. Yd.	27
Geocomposite Wall Drain			Sq. Yd.	20
Pipe Underdrains for Structures, 4"			Foot	75

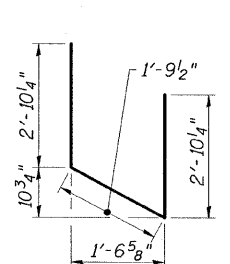
For details of piles and Concrete Encasement, see Sheet 16 of 18.
For details of Bar Splicers, see Sheet 15 of 18.



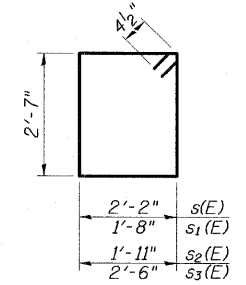
PLAN



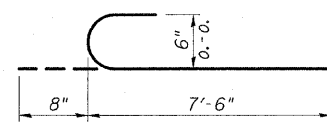
BAR v2(E)



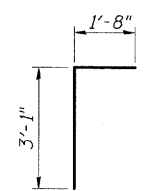
BAR u(E)



BARS s(E) thru s3(E)



BAR h1(E)



BAR v(E)

ESCA
CONSULTANTS, INC.

DESIGNED BY:	MTD	04/08
DRAWN BY:	DWH	04/08
CHECKED BY:	DAJ	05/08
APPROVED BY:	RDP	08/08

FIELD CUTTING DIAGRAM
Order v2(E) full length. Cut as shown and use remainder of bars in opposite face.

PILE DATA
Type: Steel HP12x53
Nominal Required Bearing: 419 kips
Factored Resistance Available: 209.5 kips
Estimated Length: 88.5'
No. Production Piles: 7
No. Test Piles: 1

NORTH ABUTMENT
US 45 OVER SEMINARY CREEK
FAP ROUTE 328 - SECTION (8BR-4)B-1
CLAY COUNTY
STATION 968+56.00
STRUCTURE NO. 013-0043