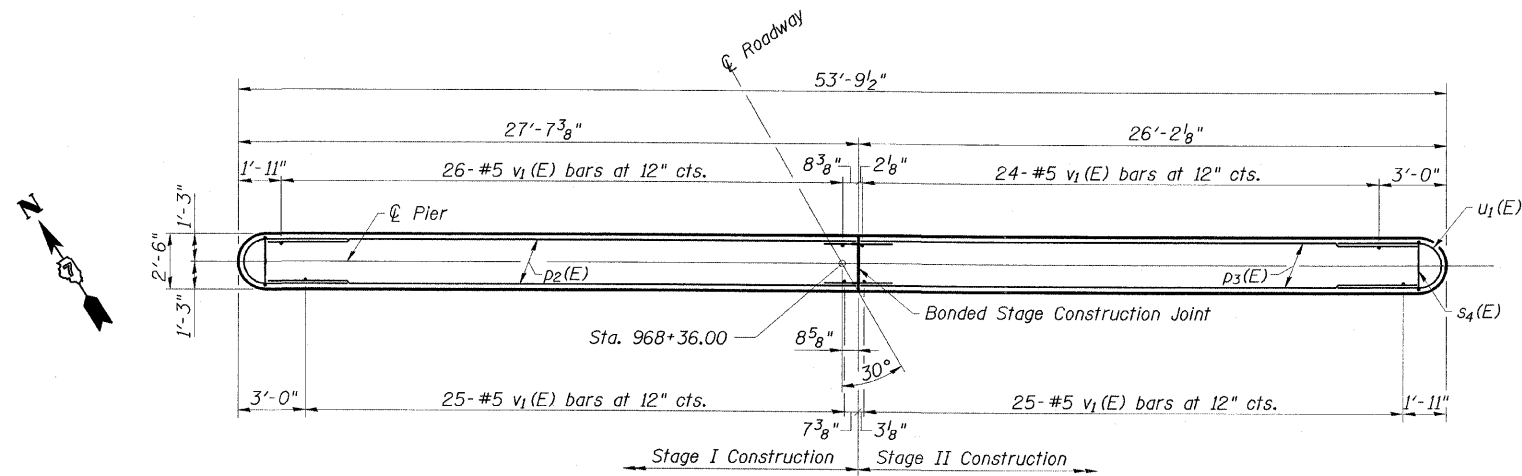
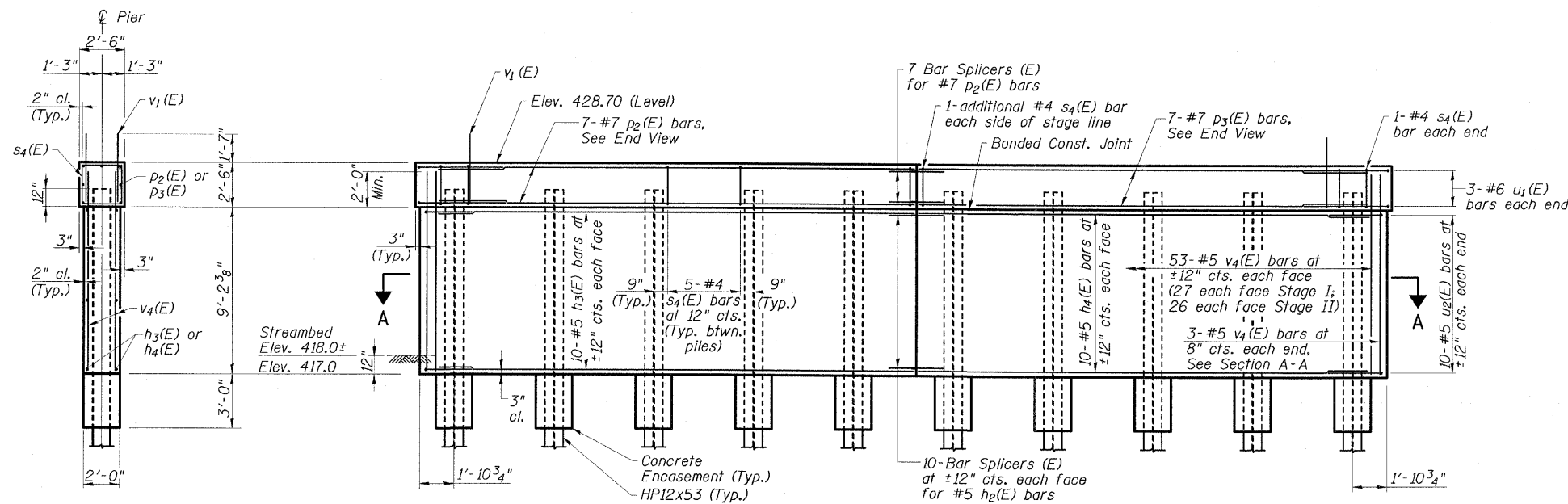


STATE OF ILLINOIS
DEPARTMENT OF TRANSPORTATION

ROUTE NO. FAP 328	SECTION *	COUNTY CLAY	STATE SHEETS 109	SHEET NO. 91	SHEET NO. 14 18 SHEETS
FED. ROAD DIST. NO.		ILLINOIS	FED. AID PROJECT		
			CONTRACT NO. 74107		

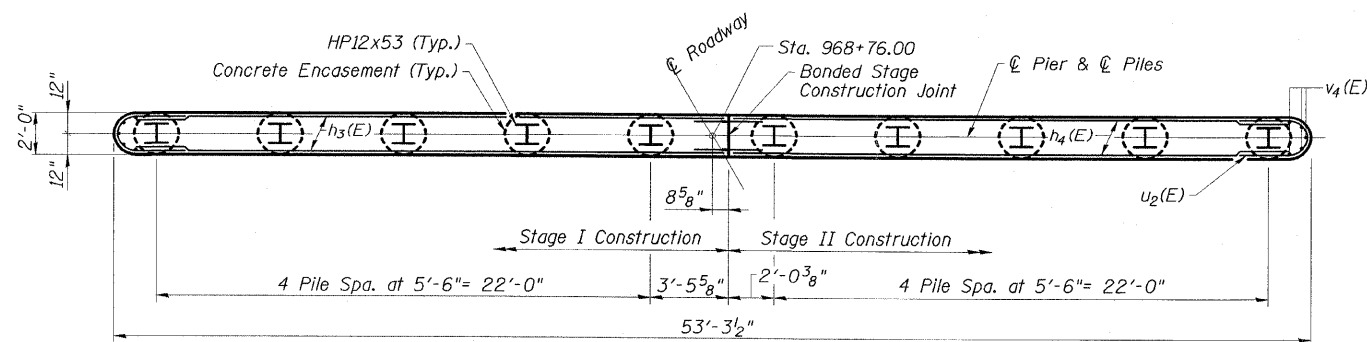


TOP PLAN



ELEVATION
(Looking North)

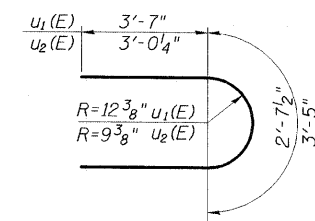
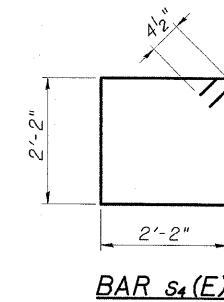
END VIEW



SECTION A-A

PIER 2
BILL OF MATERIAL

Bar	No.	Size	Length	Shape
$h_3(E)$	20	#5	26'-3"	—
$h_4(E)$	20	#5	24'-9"	—
$p_2(E)$	7	#7	26'-3"	—
$p_3(E)$	7	#7	24'-9"	—
$s_4(E)$	49	#4	9'-5"	□
$u_1(E)$	6	#6	10'-7"	—
$u_2(E)$	20	#5	8'-8"	—
$v_1(E)$	100	#5	3'-11"	—
$v_4(E)$	112	#5	11'-0"	—
Structure Excavation			Cu. Yd.	35
Concrete Structures			Cu. Yd.	48.4
Reinforcement Bars, Epoxy Coated			Pound	4075
Furnishing Steel Piles, HP12x53			Lin. Ft.	796.5
Driving Piles			Lin. Ft.	796.5
Test Pile, Steel HP12x53			Each	1
Concrete Encasement			Cu. Yd.	3.5
Underwater Structure Excavation Protection Location 2			Each	1



For details of piles and Concrete Encasement, see Sheet 16 of 18.
For details of Bar Splicers, see Sheet 15 of 18.

PILE DATA

Type: Steel HP12x53
Nominal Required Bearing: 419 kips
Factored Resistance Available: 209.5 kips
Estimated Length: 88.5'
No. Production Piles: 9
No. Test Piles: 1

PIER 2
US 45 OVER SEMINARY CREEK
FAP ROUTE 328 - SECTION (BBR-4)B-1
CLAY COUNTY
STATION 968+56.00
STRUCTURE NO. 013-0043

ESCA
CONSULTANTS, INC.

DESIGNED BY: MTD 04/08
DRAWN BY: DWH 04/08
CHECKED BY: DAJ 05/08
APPROVED BY: RDP 08/08