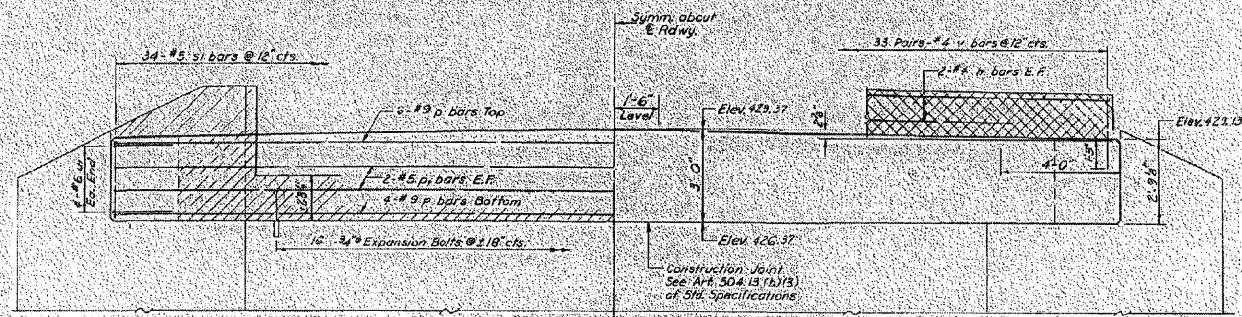
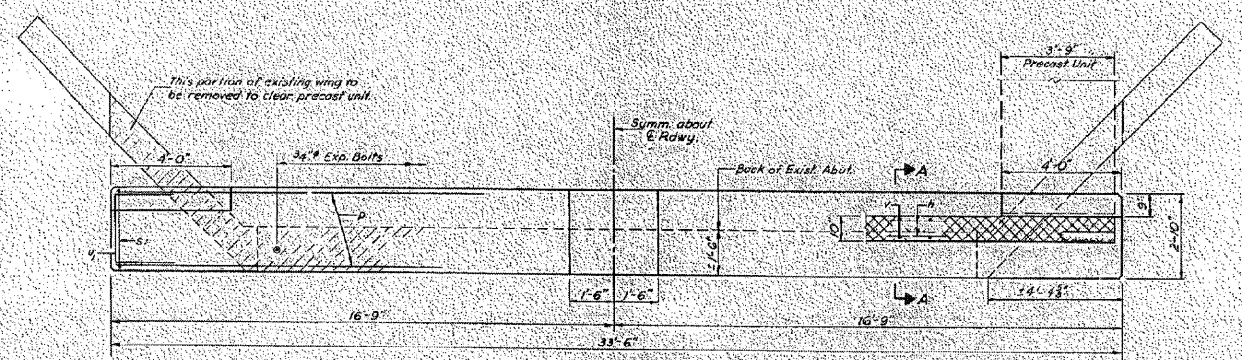


STATE OF ILLINOIS
DEPARTMENT OF TRANSPORTATION

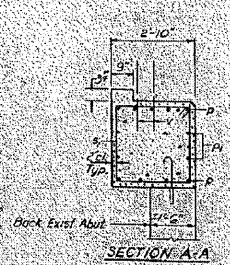
PROJECT NO.	2688A	CLAY	21	18	7 SHEETS
-------------	-------	------	----	----	----------



ELEVATION

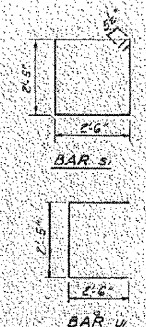


PLAN



SECTION A-A

NOTES:
Hatched area indicates Concrete Removal. Reinforcement extending into removed area shall be cleaned and incorporated into the new construction.
Cross hatched area shall be poured after beams are in place.
Expansion bolts shall be anchored in sound concrete. All edges shall have standard 45° chamfers except as noted.



BILL OF MATERIAL

Bar	No.	Size	Length	Shape
N	2	#6	52'-9"	—
D	10	#9	39'-3"	—
Di	7	#6	39'-3"	—
S	5A	#5	101'-9"	U
U	2	#6	71'-2"	—
V	6A	#4	24'-2"	—
Class X Concrete		Cu Kilo	18.0	
Reinforcement Bars		Lbs.	1842	
Expansion Bolts #4"		Each	16	
Concrete Removal		Cu Yds.	4.0	

NORTH ABUTMENT
FAP RTE 328 SEC 8 BBR-4
CLAY COUNTY
STA. 868+65

DESIGNED	Simon V. Fom...	EXAMINED	Jan 18 1972
CHECKED	Simon V. Fom...	PASSED	
DRAWN	Simon V. Fom...	APPROVED	
CHECKED	J.P.		