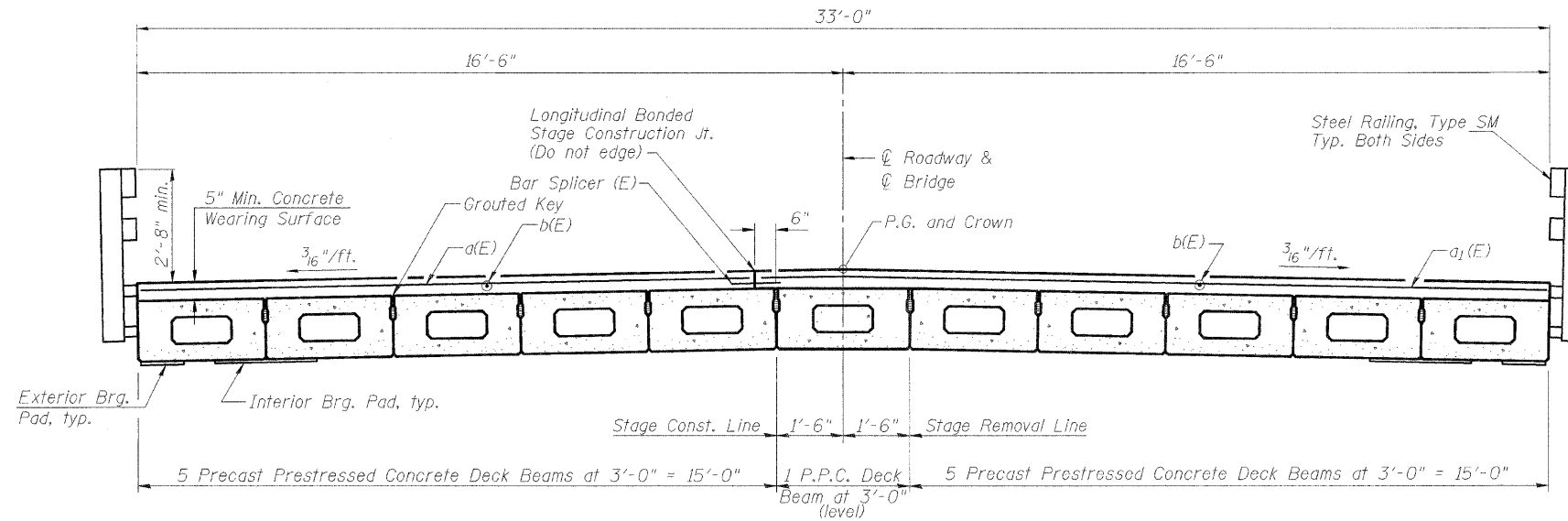


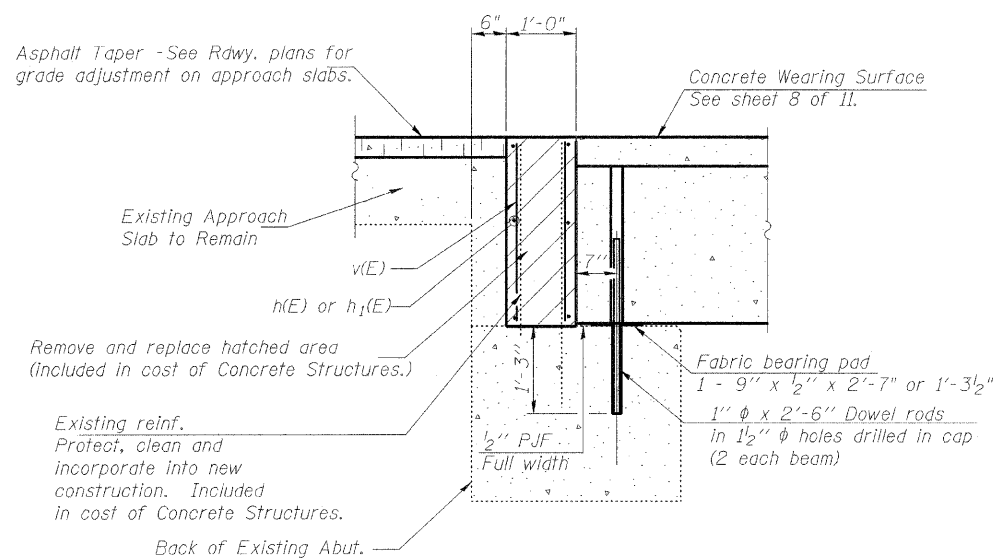
STATE OF ILLINOIS  
DEPARTMENT OF TRANSPORTATION

ROUTE NO.	SECTION	COUNTY	TOTAL SHEETS	SHEET NO.	SHEET NO. 5
FAP 770	116 BR-1	Moultrie	46	14	11 SHEETS
FED. ROAD DIST. NO. 7	ILLINOIS	FED. AID PROJECT-			

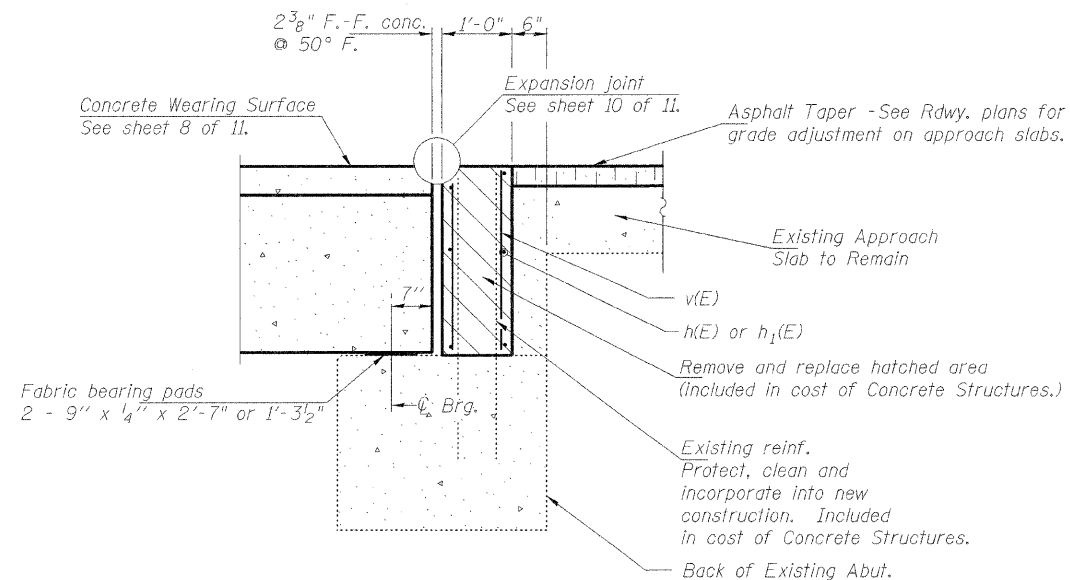
Contract #74183



**CROSS SECTION**  
(Looking North)



**SECTION THRU SOUTH ABUTMENT**  
(Fixed)



**SECTION THRU NORTH ABUTMENT**  
(Expansion)

Notes:

1. After beams have been erected, holes shall be drilled into substructure and anchor dowels placed. Dowel holes shall be filled with non-shrink grout to top of beam and allowed to cure min. 24 hrs. prior to grouting the shear keys.
2. All horizontal dimensions are at right angles to beam ends and abutments.
3. See Sht. 7 of 11 for bearing pad details.
4. Existing dowel rods shall be burned off flush with the top of the abutment or pier.
5. Hatched area to be poured after concrete wearing surface is in place.

DESIGNED	DDB
CHECKED	LLV
DRAWN	MJY
CHECKED	LLV

**DECK CROSS SECTION, SECTIONS THRU ABUTMENTS**  
**F.A.P. 770 (IL RTE. 128)**  
**OVER TRIBUTARY TO MARROWBONE CREEK**  
**SECTION 116-BR-1**  
**MOULTRIE COUNTY STA. 959+14.00**  
**STRUCTURE NO. 070-0037**

**STS | AECOM**

111 NE Jefferson Ave.  
Peoria, Illinois 61602  
Ph(309)676-8464  
FAX(309)676-5445  
IL Design Firm Reg.  
No. 184-001518  
www.sts.aecom.com