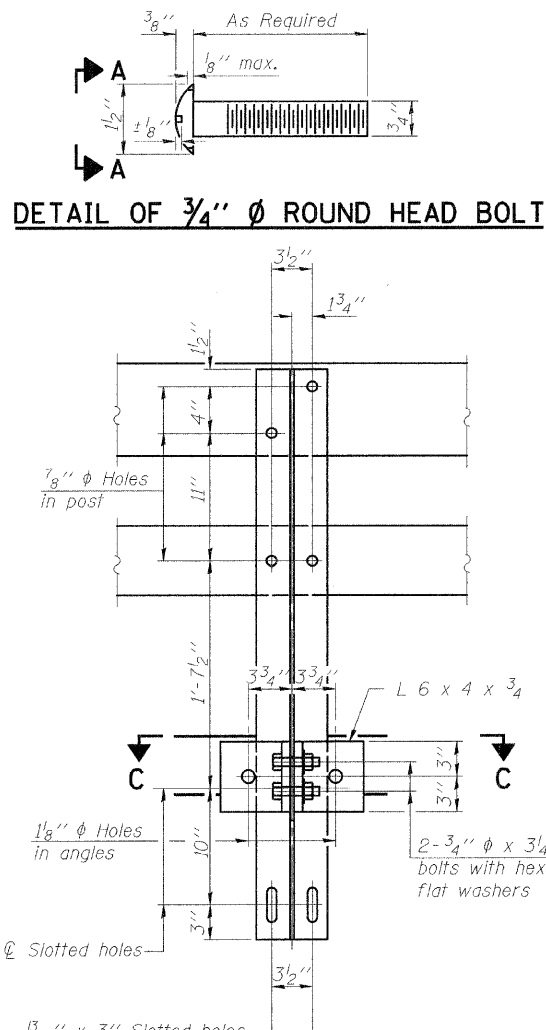


STATE OF ILLINOIS
DEPARTMENT OF TRANSPORTATION

ROUTE NO.	SECTION	COUNTY	SHEETS	SHEET NO.
FAP 770	116 BR-1	Moultrie	46	18
FED. ROAD DIST. NO. 7	ILLINOIS	FED. AID PROJECT		

Contract #74183

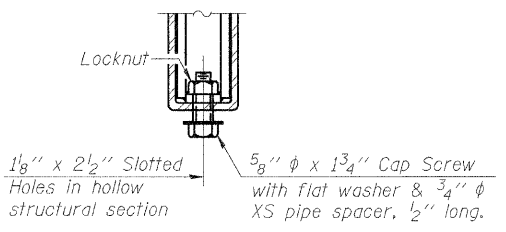
DETAIL OF 3/4" Ø ROUND HEAD BOLT



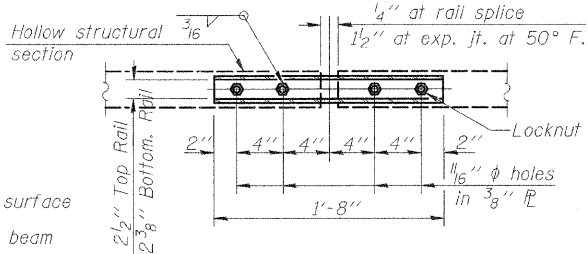
VIEW A-A

4-3/4" Ø x 6" Round Head Bolts (With slot or approved recess in head) with locknut & flat washer. 7/8" Ø holes in hollow structural section may be drilled in the field.

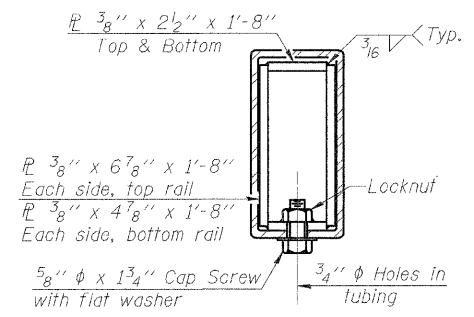
RAIL SPLICE CONNECTION AT EXPANSION JT.



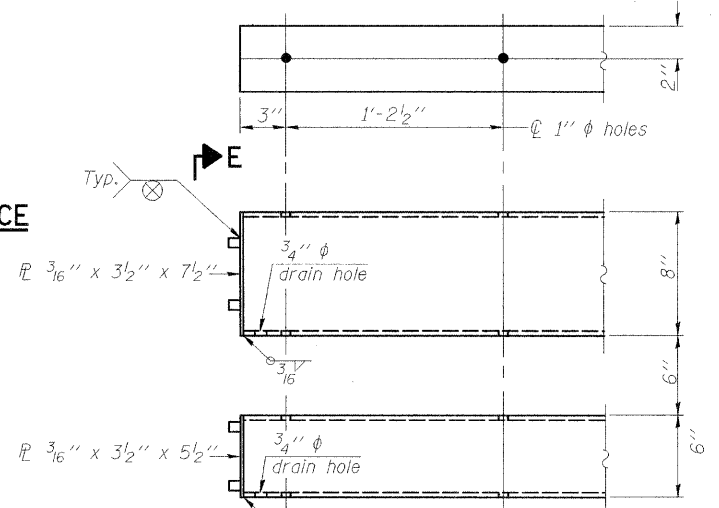
PLAN-BOTTOM SPLICE & TYPICAL



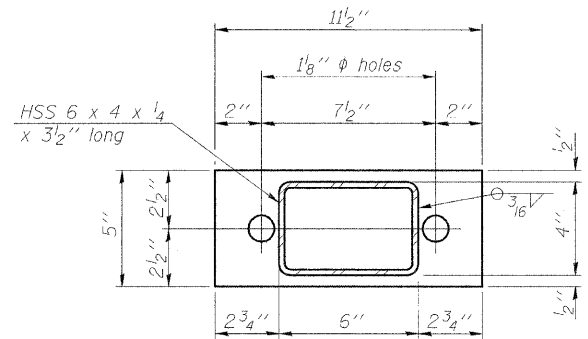
SECTION AT RAIL SPLICE



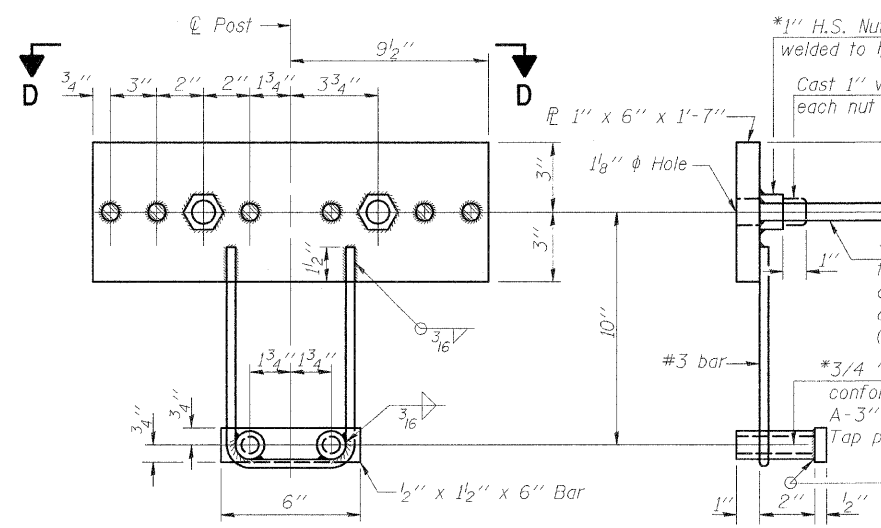
END OF RAIL DETAILS



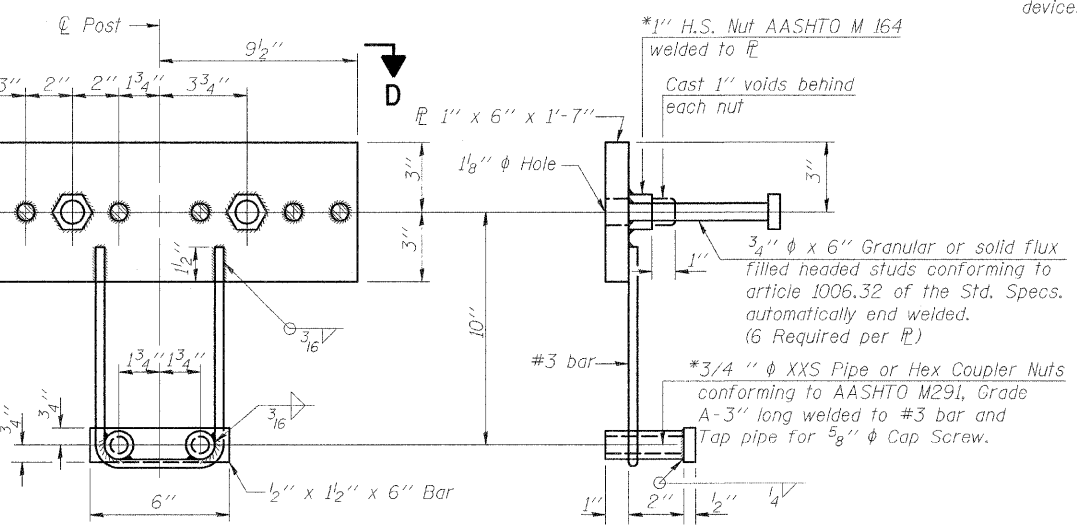
SECTION AT RAIL POST



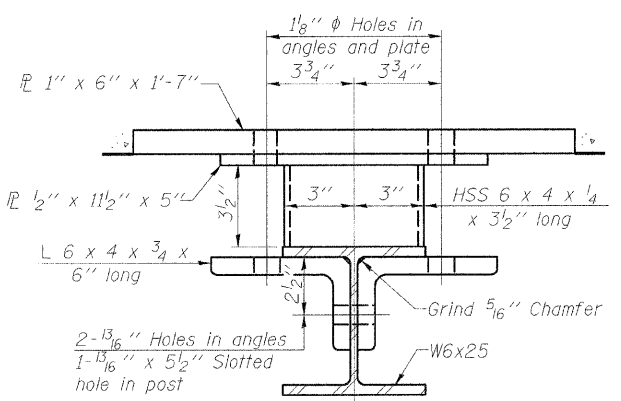
VIEW D-D



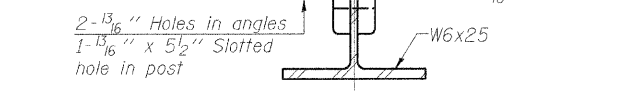
ANCHOR DEVICE



SECTION B-B



SECTION C-C



Notes:
All field drilled holes shall be coated with an approved zinc rich paint before erection.
For multi-span bridges, sufficient 1/4" x 6" x 1'-2" galvanized steel shims shall be provided to align rail between adjacent spans. Cost included with Steel Railing, Type SM.
Steel rail elements shall be galvanized according to Article 509.05 of the Standard Specifications.
**The studs of the anchor devices shall be placed below the top reinforcement bars and the outermost longitudinal reinforcement bar shall be placed directly above the studs of the rail post anchor device.

BILL OF MATERIAL

Item	Unit	Quantity
Steel Railing, Type SM	Foot	109

STEEL RAILING, TYPE SM
F.A.P. 770 (IL RTE. 128)
OVER TRIBUTARY TO MARROWBONE CREEK
SECTION 116-BR-1
MOULTRIE COUNTY STA. 959+14.00
STRUCTURE NO. 070-0037

STS | AECOM

111 NE Jefferson Ave.
Peoria, Illinois 61602
Ph(309)676-8464
FAX(309)676-5445
IL Design Firm Reg.
No. 184-001518
www.sts.aecom.com

DESIGNED	DDB
CHECKED	LLV
DRAWN	MJY
CHECKED	LLV

R-34CWS 5-16-08 (6'-3" Maximum Post Spacing) (5" minimum to 7 1/8" maximum CWS thickness)

*Threaded areas shall be plugged or blocked off during casting of beam. Galvanized after fabrication.