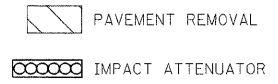
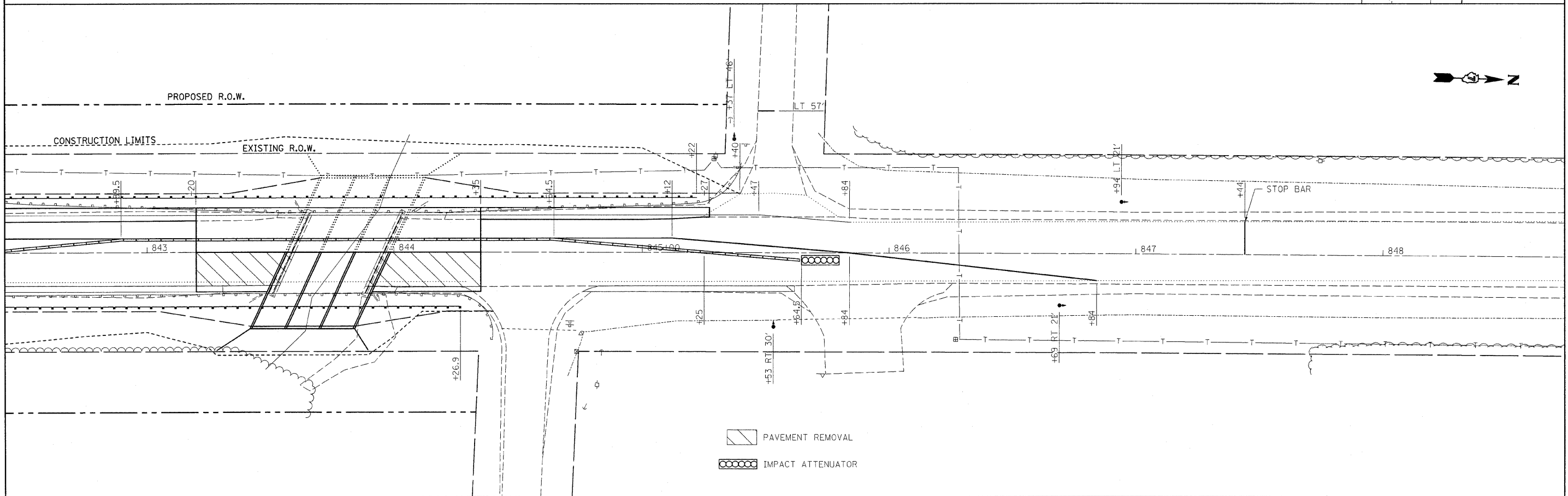
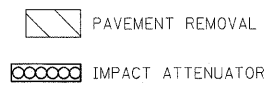


- SUGGESTED SEQUENCE OF CONSTRUCTION: STAGE 2
- 1) COMPLETE STAGE 2 CONSTRUCTION.
 - 2) REMOVE STAGE TRAFFIC CONTROL.
 - 3) COMPLETE PERMANENT STRIPING USING STD. 701311-02.



FILE NAME = c:\projects\74183d\shststage20819_74183.dgn	USER NAME = steffennk	DESIGNED - DRAWN -	REVISED - REVISED -	STATE OF ILLINOIS DEPARTMENT OF TRANSPORTATION	S.N. 070-0018 STAGE 2 CONSTRUCTION			F.A.P. RTE. 770	SECTION (116B1)B-1,(116BR)BR	COUNTY MOULTRIE	TOTAL SHEETS 46	SHEET NO. 24
PLOT SCALE = 20.0000' / IN.		CHECKED -	REVISED -		SCALE:	SHEET NO.	OF	SHEETS	STA.	TO STA.	FED. ROAD DIST. NO.	ILLINOIS FED. AID PROJECT
PLOT DATE = 8/19/2008		DATE -	REVISED -		CONTRACT NO. 74183							