

STATE OF ILLINOIS
DEPARTMENT OF TRANSPORTATION

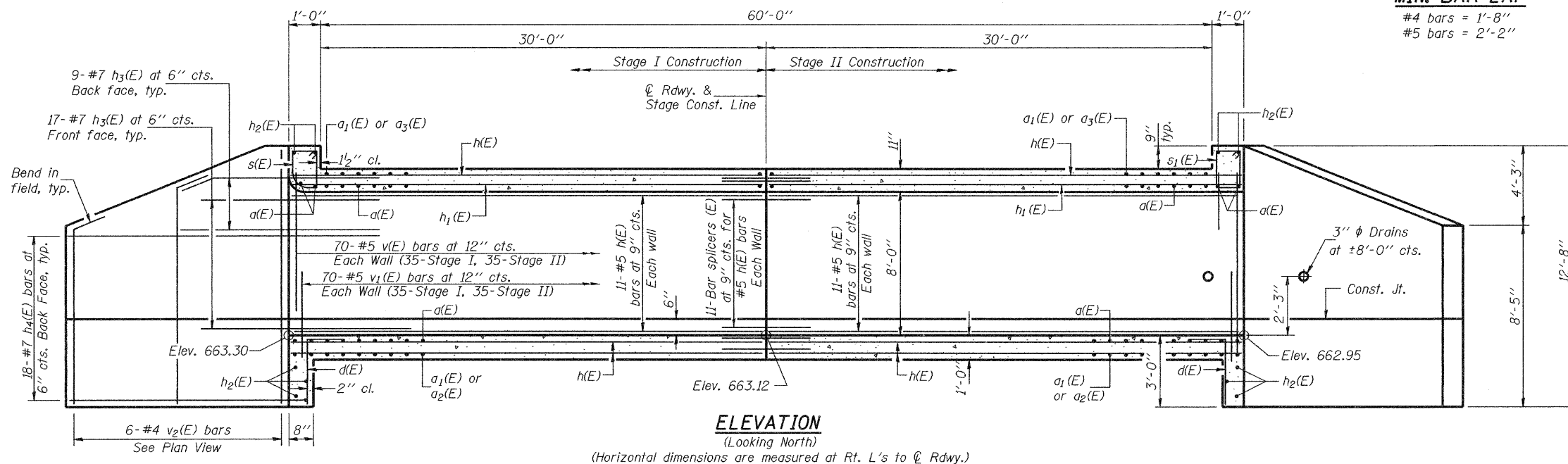
ROUTE NO.	SECTION	COUNTY	15% SHEETS	SHEET NO.
FAP 770	#	MOULTRIE	46	30
FED. ROAD DIST. NO. 7	ILLINOIS	FED. AID PROJECT-		

Contract #74183 * (I16BR)B-1 & (I16BR)BR

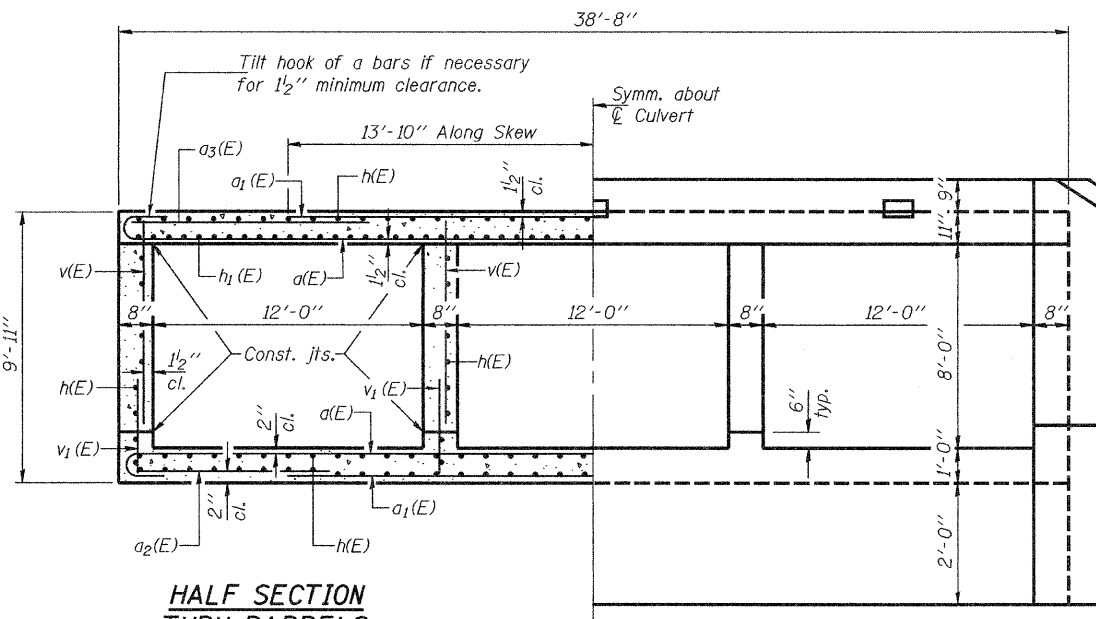
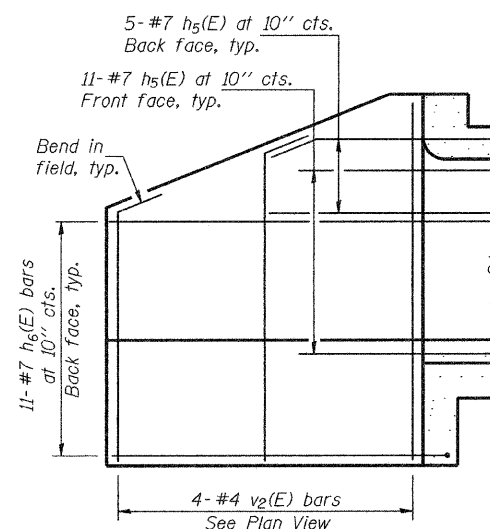
SHEET NO. 6
9 SHEETS

MIN. BAR LAP

#4 bars = 1'-8"
#5 bars = 2'-2"

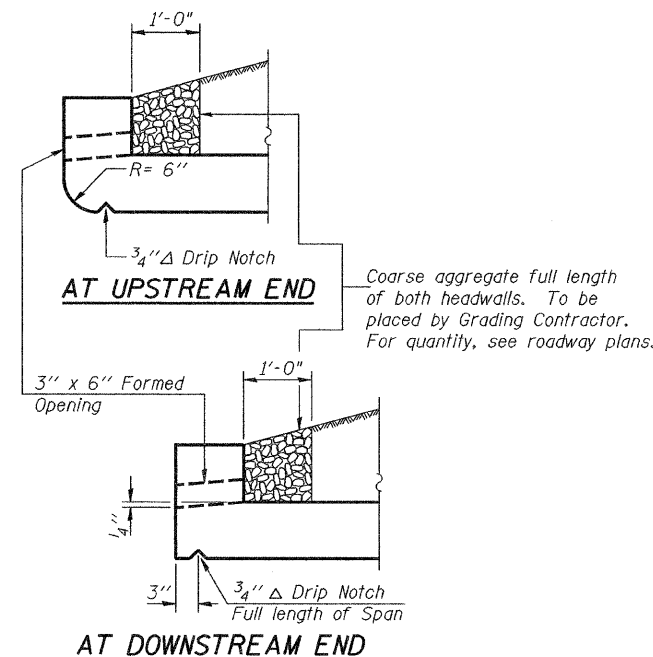


N.W. & S.E. WING WALLS



HALF END ELEVATION

Dims. at Rt. L's to \varnothing culvert unless otherwise noted.

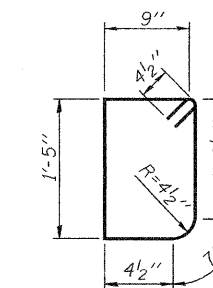


DRAIN DETAIL

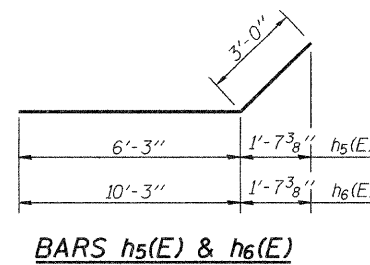
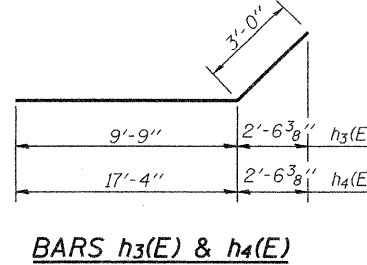
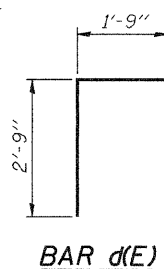
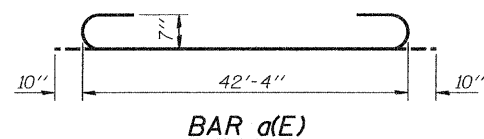
BILL OF MATERIAL

Bar	No.	Size	Length	Shape
a(E)	276	#7	44'-0"	C
a1(E)	234	#7	27'-8"	—
a2(E)	72	#4	9'-1"	—
a3(E)	92	#5	9'-7"	—
d(E)	80	#4	4'-6"	L
h(E)	328	#5	33'-11"	—
h1(E)	112	#6	33'-11"	—
h2(E)	10	#6	42'-4"	—
h3(E)	52	#7	12'-9"	—
h4(E)	36	#7	20'-4"	—
h5(E)	32	#7	9'-3"	—
h6(E)	22	#7	13'-3"	—
s(E)	44	#4	4'-11"	D
s1(E)	44	#4	5'-1"	D
v(E)	280	#5	8'-2"	—
v1(E)	280	#5	3'-8"	—
v2(E)	20	#4	12'-5"	—
v3(E)	4	#5	9'-7"	—
Concrete Box Culverts		Cu. Yd.	270	
Reinforcement Bars, Epoxy Coated		Pound	65,610	

BARS s1(E)



BARS s(E)



Notes:
A distance of half the length of the wingwall but not less than six feet of the barrel shall be poured monolithically with the wingwalls.

CULVERT DETAILS
F.A.P. RTE. 770 -
SEC. (I16BR)B-1 & (I16BR)BR
MOULTRIE COUNTY
STATION 843+77.40
STRUCTURE NO. 070-2019

DESIGNED	Jay D. Edwards	EXAMINED	September 16, 2008
CHECKED	Nick R. Barnett	PASSED	Thomas J. Domagalala
DRAWN	BECKY M. LEACH		Ralph E. Anderson
CHECKED	JDE/NRB		