

F.A.P. RTE.	SECTION	COUNTY	TOTAL SHEETS	SHEET NO.
327	(51-23-1.51-24)RS-1	LAWRENCE	47	1
FED. ROAD DIST. NO.		ILLINOIS	CONTRACT NO. 74308	

STATE OF ILLINOIS
DEPARTMENT OF TRANSPORTATION
DIVISION OF HIGHWAYS

FOR INDEX OF SHEETS, SEE SHEET NO. 2

STATION EQUATIONS

STA. 671+45.88 (BK) = STA. 1671+45.88 (AH)
 STA. 1731+00.35 (BK) = STA. 730+67.12 (AH)

PAVING OMISSIONS

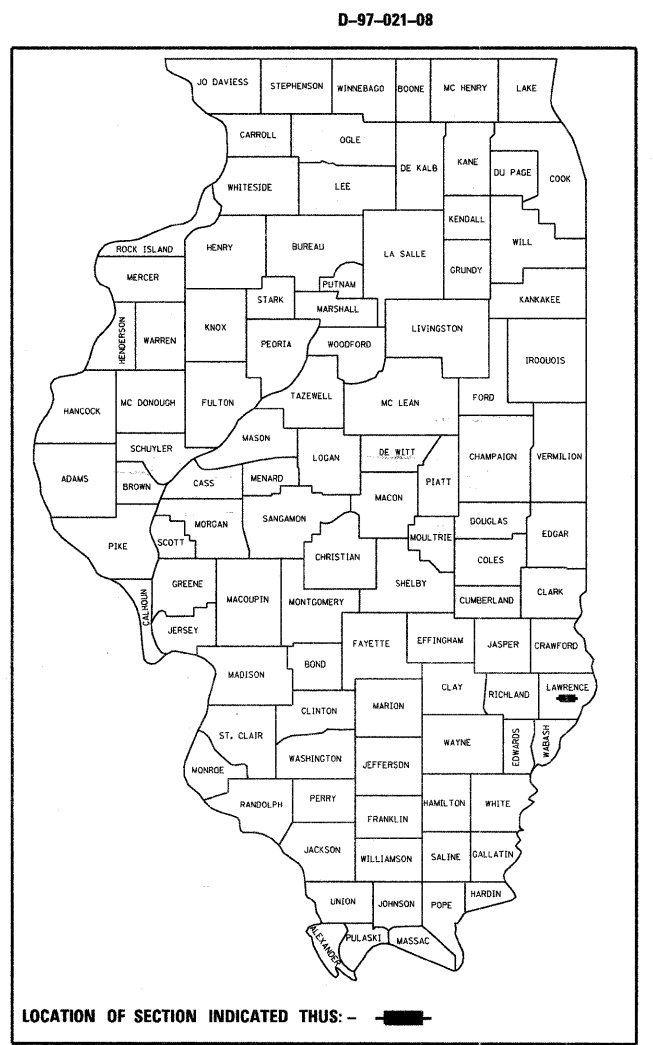
STA. 582+53 TO STA. 584+05
 STA. 603+36 TO STA. 604+65
 STA. 652+05 TO STA. 656+55
 STA. 740+80 TO STA. 741+96

**PROPOSED
 HIGHWAY PLANS**

F.A.P. ROUTE 327 (U.S. ROUTE 50)
SECTION (51-23-1.51-24)RS-1
PROJECT: NHF-0327(041)
RESURFACING
LAWRENCE COUNTY

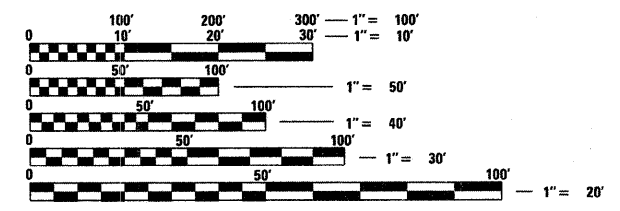
C-97-058-08

2007 ADT = 6000



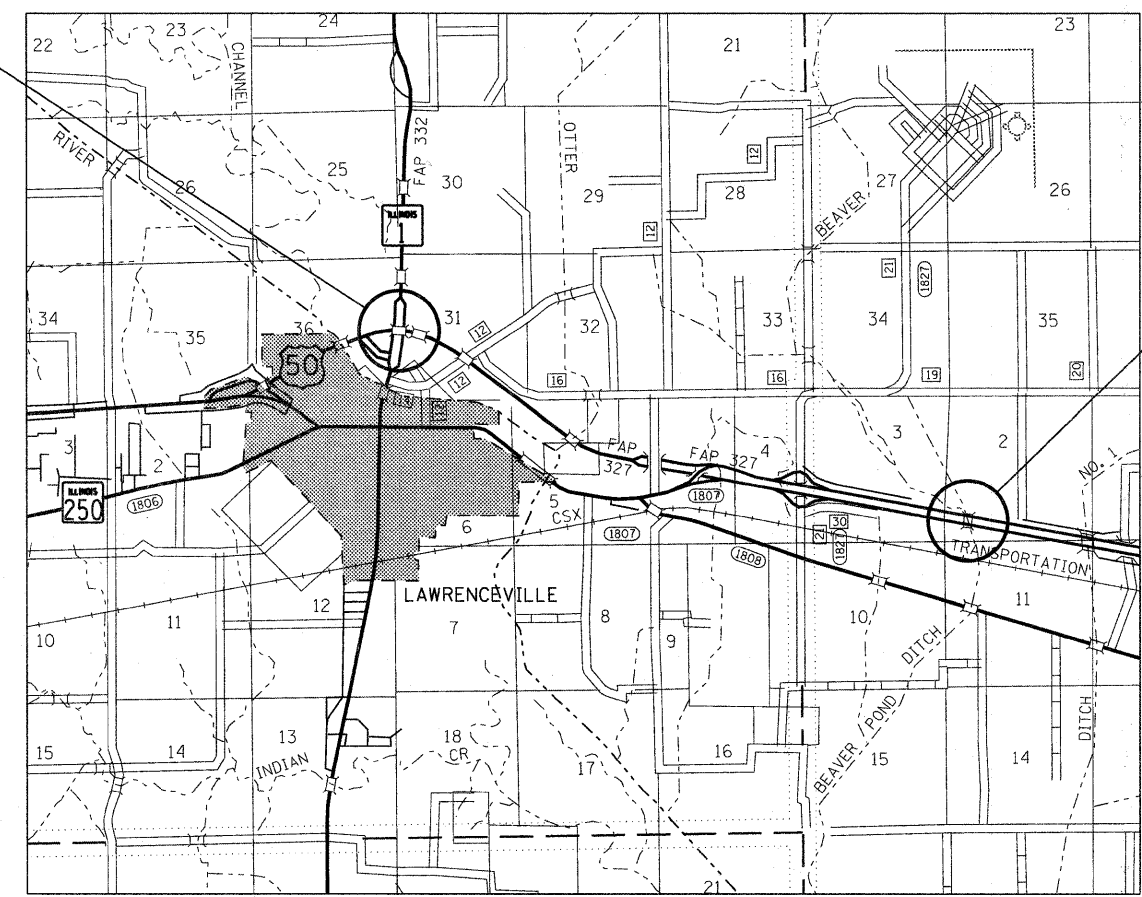
F.A.P. ROUTE 327
SECTION (51-23-1.51-24)RS-1
LAWRENCE COUNTY
PROJECT BEGINS:
STA. 577 + 71.78

F.A.P. ROUTE 327
SECTION (51-23-1.51-24)RS-1
LAWRENCE COUNTY
PROJECT ENDS:
STA. 803 + 06.00



FULL SIZE PLANS HAVE BEEN PREPARED USING STANDARD ENGINEERING SCALES. REDUCED SIZED PLANS WILL NOT CONFORM TO STANDARD SCALES. IN MAKING MEASUREMENTS ON REDUCED PLANS, THE ABOVE SCALES MAY BE USED.

J.U.L.I.E.
 JOINT UTILITY LOCATION INFORMATION FOR EXCAVATION
 1-800-892-0123
 OR 811



PROJECT ENGINEER: TOM RONAN
PROJECT MANAGER: JENNIFER WENTHE

GROSS LENGTH = 22,534.0 FT. = 4.27 MILE
NET LENGTH = 21,686.0 FT. = 4.11 MILE

STATE OF ILLINOIS
 DEPARTMENT OF TRANSPORTATION
 DIVISION OF HIGHWAYS

SUBMITTED October 14, 2008

Raymond A. Driskell
 DEPUTY DIRECTOR OF HIGHWAYS, REGION ENGINEER

December 5, 2008
Cris E. Harm
 INTERIM ENGINEER OF DESIGN AND ENVIRONMENT

December 5, 2008
Christine M. Reed
 DIRECTOR OF HIGHWAYS, CHIEF ENGINEER

**PRINTED BY THE AUTHORITY
 OF THE STATE OF ILLINOIS**