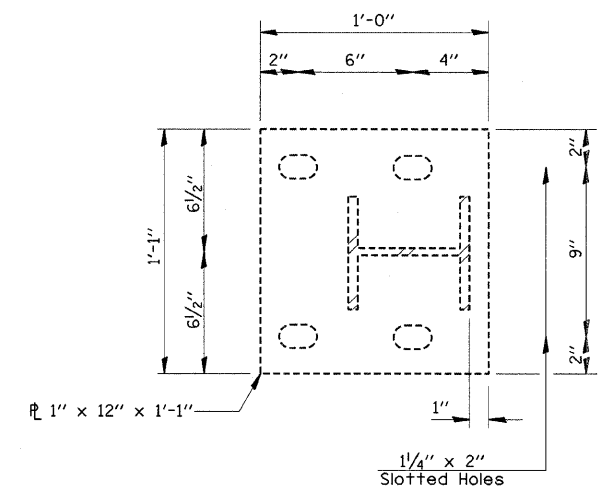
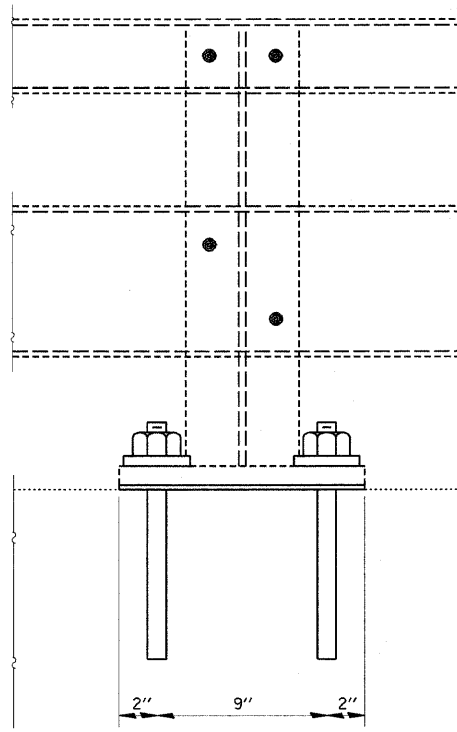


4 - 1"  $\emptyset$  H.S. Threaded Anchor Rods with hex nuts and lock washers, drilled and set according to Article 509.06 of the Standard Specifications.



FILE NAME =	USER NAME = swartzrn	DESIGNED -	REVISED -	<b>STATE OF ILLINOIS DEPARTMENT OF TRANSPORTATION</b>	<b>RAIL SUPPORT POST DETAIL SN 025-0030</b>		F.A.I. RTE.	SECTION	COUNTY	TOTAL SHEETS	SHEET NO.	
ca:\pwork\pwork\swartzrn\dss50697\shg	lan_74308.dgn	DRAWN -	REVISED -		72	(I-1MFT,1-WMFT,104Z,104)RS	EFFINGHAM	47	43			
	PLOT SCALE = 20,0000 ' / IN.	CHECKED -	REVISED -		SCALE: N/A		SHEET NO. 11 OF 15 SHEETS		STA. TO STA.		CONTRACT NO. 74308	
	PLOT DATE = 10/14/2008	DATE -	REVISED -		FED. ROAD DIST. NO.		ILLINOIS FED. AID PROJECT					

SHEET NO. 11  
15 SHEETS