

F.A.P. RTE.	SECTION	COUNTY	TOTAL SHEETS	SHEET NO.
817	421B-1	ST. CLAIR	56	1
FED. ROAD DIST. NO.	ILLINOIS	CONTRACT NO. 76885		

56-1-55

STATE OF ILLINOIS
DEPARTMENT OF TRANSPORTATION
DIVISION OF HIGHWAYS

**PROPOSED
HIGHWAY PLANS**

FAP ROUTE 817 (IL ROUTE 4 / 15)

SECTION 421B-1

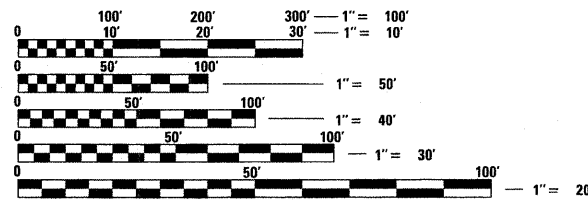
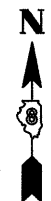
PROJECT: *BRF-0817(009)*

STRUCTURE REPLACEMENT
ST. CLAIR COUNTY

C-98-041-05

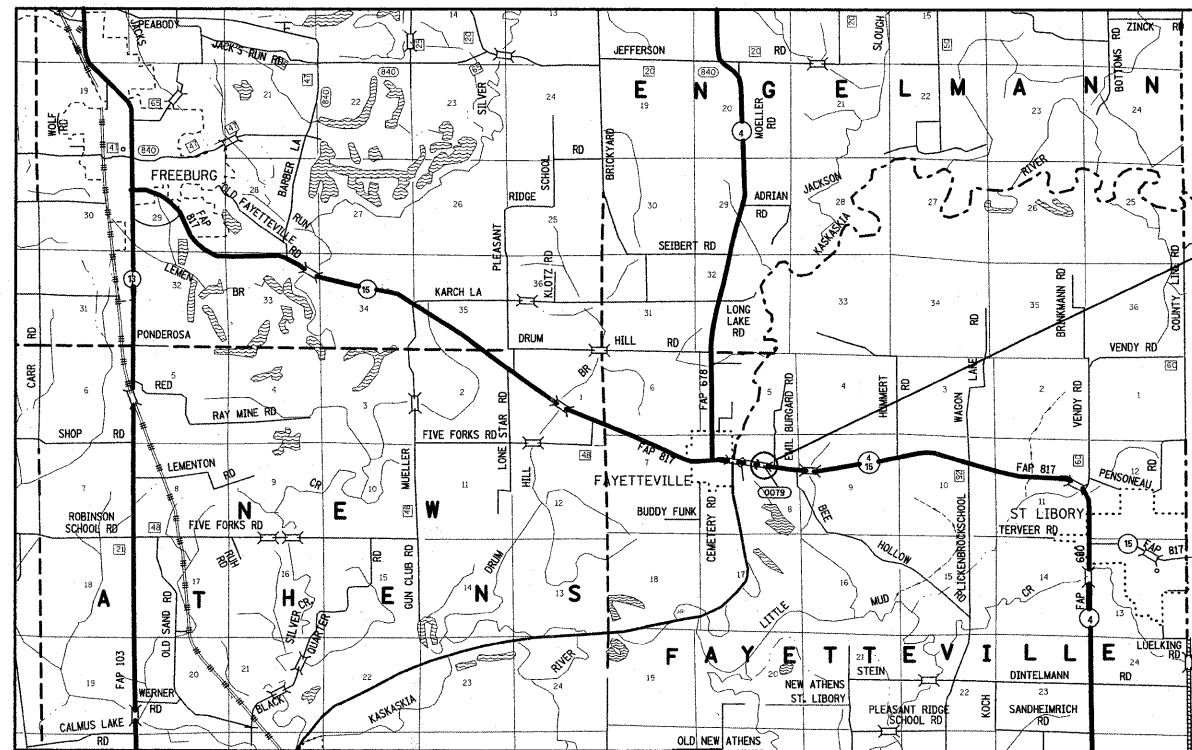
FOR INDEX OF SHEETS, SEE SHEET NO. 2

D-98-022-05



FULL SIZE PLANS HAVE BEEN PREPARED USING STANDARD ENGINEERING SCALES. REDUCED SIZED PLANS WILL NOT CONFORM TO STANDARD SCALES. IN MAKING MEASUREMENTS ON REDUCED PLANS, THE ABOVE SCALES MAY BE USED.

J.U.L.I.E.
JOINT UTILITY LOCATION INFORMATION FOR EXCAVATION
1-800-892-0123
OR 811



THREE SPAN STEEL I-BEAM
STRUCTURE TO BE REPLACED
IN-KIND OVER KASKASKIA
OVERFLOW CHANNEL.
SN 082-0079 (E)
SN 082-0275 (P)
STA 149+50.00
145'-6" BK TO BK ABUTMENTS

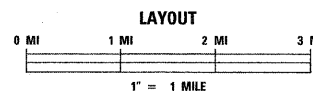
T 2 S

ADT = 5000 (2007)
ADT = 6500 (2029)
SU = 4.5%
MU = 3.5%

PROJECT ENGINEER: PATTI LeBEAU (618) 346-3179
PROJECT MANAGER: ARTHUR MUEHLFELD (618) 346-3209

CONTRACT NO. 76885

DESIGN DESIGNATION
N/A



LATITUDE = 38.37649
LONGITUDE = 89.78470

GROSS LENGTH = 0.028 MI
NET LENGTH = 0.028 MI

**PRINTED BY THE AUTHORITY
OF THE STATE OF ILLINOIS**

STATE OF ILLINOIS
DEPARTMENT OF TRANSPORTATION
DIVISION OF HIGHWAYS

SUBMITTED *Oct 15 20 08*
Mar C Ramis
DEPUTY DIRECTOR OF HIGHWAYS, REGION 5 ENGINEER

December 5, 20 08
Eric E. Harau
INTERIM ENGINEER OF DESIGN AND ENVIRONMENT

December 5, 20 08
Christine M. Reed
DIRECTOR OF HIGHWAYS, CHIEF ENGINEER