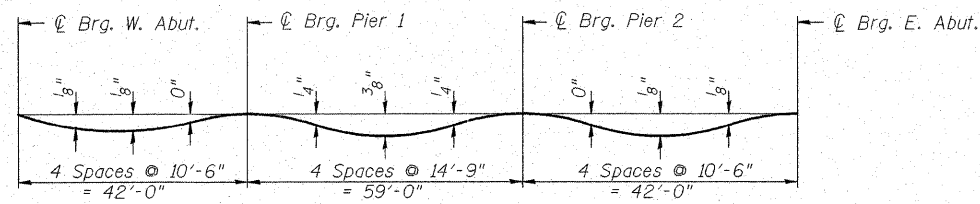
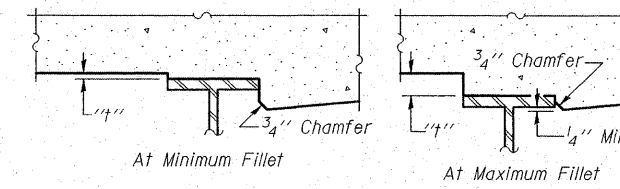


STATE OF ILLINOIS
DEPARTMENT OF TRANSPORTATION



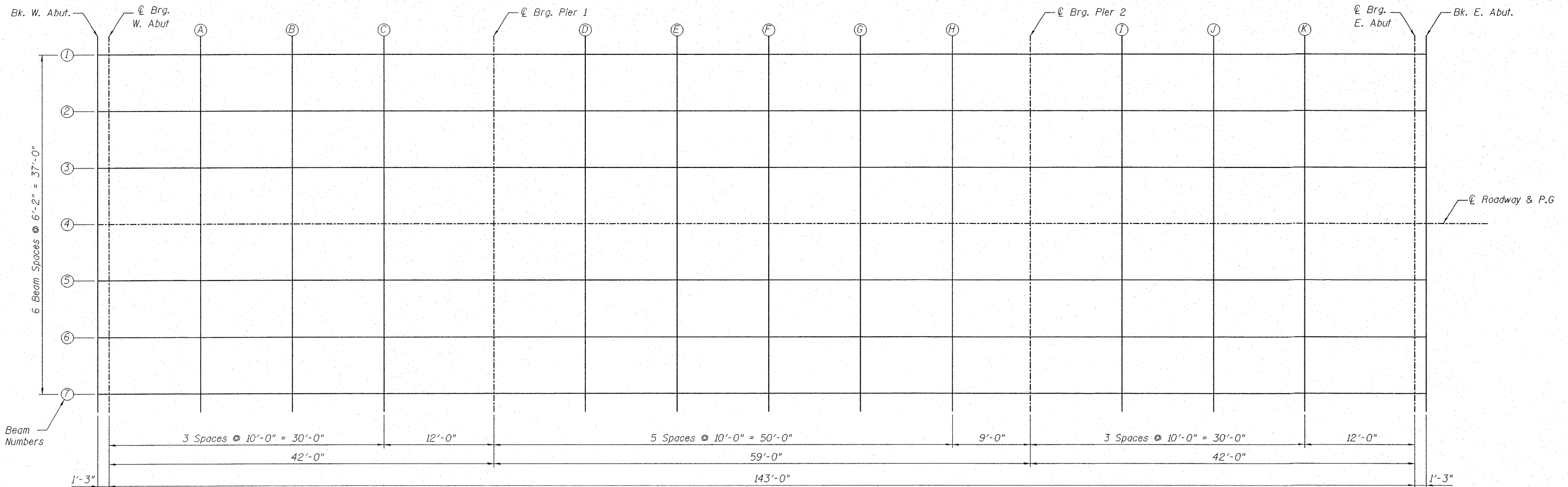
DEAD LOAD DEFLECTION DIAGRAM
(Includes weight of concrete only.)

Note: The above deflections are not to be used in the field if the engineer is working from the grade elevations adjusted for dead load deflections as shown on sheet 5, 6, & 7 of 28



To determine "t": After all structural steel has been erected, elevations of the top flanges of the beams shall be taken at intervals shown below. These elevations subtracted from the "Theoretical Grade Elevations Adjusted for Dead Load Deflection" shown on sheet 5, 6, & 7 of 28, minus slab thickness, equals the fillet heights "t" above top flange of beams.

FILLET HEIGHTS



PLAN

**TOP OF SLAB ELEVATIONS
ILLINOIS ROUTE 4/15 OVER
KASKASKIA OVERFLOW
F.A.P. ROUTE 817 SEC 421B-1
ST. CLAIR COUNTY
STATION 149+50.00
STRUCTURE NO. 082-0275**

Note: Work this sheet with sheet 5, 6, & 7 of 28

DESIGNED	DB
CHECKED	RS
DRAWN	ER
CHECKED	WWH



Juneau Associates, Inc. P.C.
CONSULTING ENGINEERS AND LAND SURVEYORS
2100 State Street
Granite City, Illinois 62640
Phone: (618) 877-1400
Fax: (618) 452-5541
100 North Research Drive
Edwardsville, Illinois 62025
Phone: (618) 659-0900/(618) 659-0800
Fax: (618) 659-0941
Registered Professional Service Corporation License No. 154-000389

SHEET NO. 4 28 SHEETS	F.A.P. RTE.	SECTION	COUNTY	TOTAL SHEETS	SHEET NO.
	817	421B-1	ST. CLAIR	56	23
STRUCTURE NO. 082-0275			CONTRACT NO. 76885		
FED. ROAD DIST. NO.		ILLINOIS FED. AID PROJECT			