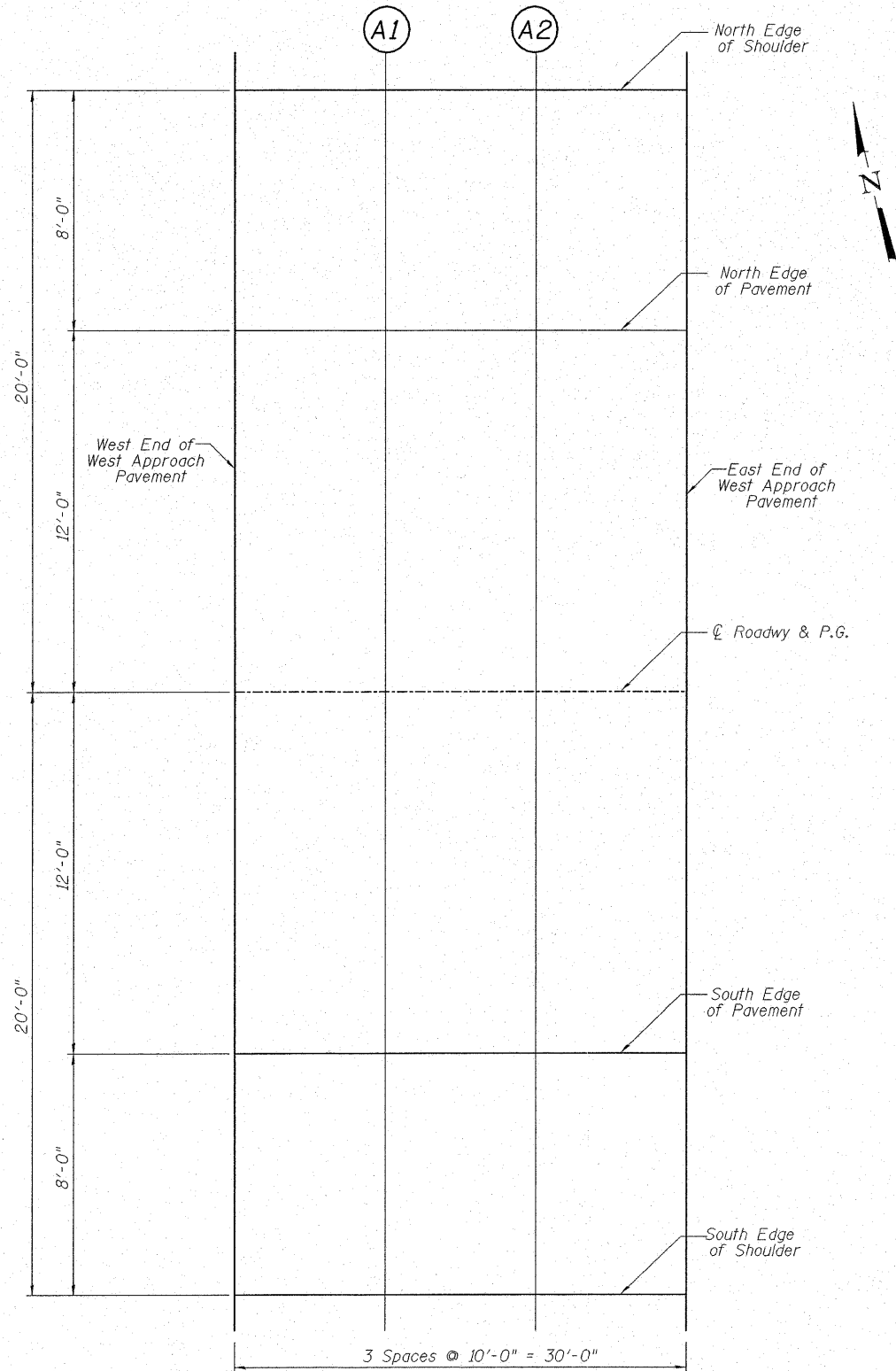


STATE OF ILLINOIS
DEPARTMENT OF TRANSPORTATION



NORTH EDGE OF SHOULDER

Location	Station	Offset	Theoretical Grade Elevations
West End of West Approach Pavement	148+47.25	-20.00	407.16
A1	148+57.25	-20.00	407.19
A2	148+67.25	-20.00	407.23
East End of West Approach Pavement	148+77.25	-20.00	407.26

NORTH EDGE OF PAVEMENT

Location	Station	Offset	Theoretical Grade Elevations
West End of West Approach Pavement	148+47.25	-12.00	407.32
A1	148+57.25	-12.00	407.36
A2	148+67.25	-12.00	407.39
East End of West Approach Pavement	148+77.25	-12.00	407.43

CL ROADWAY & PROFILE GRADE

Location	Station	Offset	Theoretical Grade Elevations
West End of West Approach Pavement	148+47.25	0.00	407.51
A1	148+57.25	0.00	407.55
A2	148+67.25	0.00	407.58
East End of West Approach Pavement	148+77.25	0.00	407.62

SOUTH EDGE OF PAVEMENT

Location	Station	Offset	Theoretical Grade Elevations
West End of West Approach Pavement	148+47.25	12.00	407.32
A1	148+57.25	12.00	407.36
A2	148+67.25	12.00	407.39
East End of West Approach Pavement	148+77.25	12.00	407.43

SOUTH EDGE OF SHOULDER

Location	Station	Offset	Theoretical Grade Elevations
West End of West Approach Pavement	148+47.25	20.00	407.16
A1	148+57.25	20.00	407.19
A2	148+67.25	20.00	407.23
East End of West Approach Pavement	148+77.25	20.00	407.26

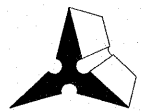
TOP OF APPROACH
SLAB ELEVATIONS
ILLINOIS ROUTE 4/15 OVER
KASKASKIA OVERFLOW
F.A.P. ROUTE 817 SEC 421B-1
ST. CLAIR COUNTY
STATION 149+50.00
STRUCTURE NO. 082-0275

Notes:

Elevations are at top of concrete.
All stations and offsets are given with respect to centerline of profile grade.

DESIGNED	DB
CHECKED	RS
DRAWN	ER
CHECKED	WWH

PLAN
West Approach



Juneau Associates, Inc. P.C.
CONSULTING ENGINEERS AND LAND SURVEYORS

2100 State Street
Granite City, Illinois 62040
Phone: (618) 937-1400
Fax: (618) 452-3541
Registered Professional Service Corporation License No. 184-000389

100 North Research Drive
Edwardsville, Illinois 62025
Phone: (618) 659-0000/(618) 659-0900
Fax: (618) 659-0841

SHEET NO. 8 28 SHEETS	F.A.P. RTE.	SECTION	COUNTY	TOTAL SHEETS	SHEET NO.
	817	421B-1	ST. CLAIR	56	27
STRUCTURE NO. 082-0275		CONTRACT NO. 76885			
FED. ROAD DIST. NO.		ILLINOIS FED. AID PROJECT			