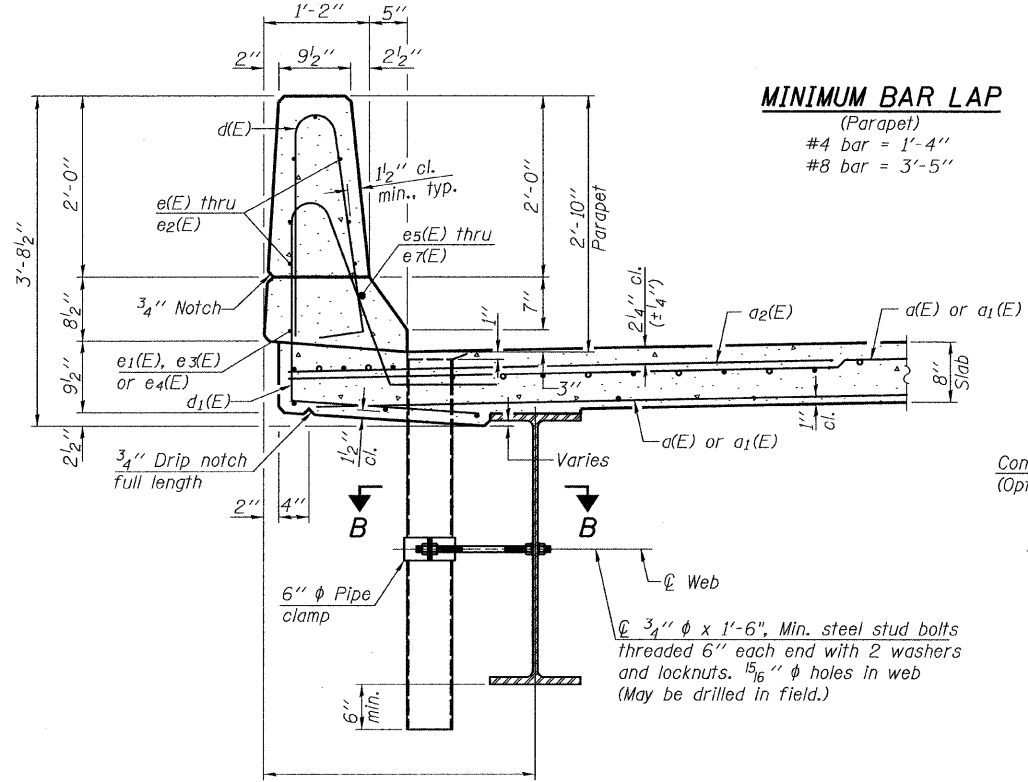
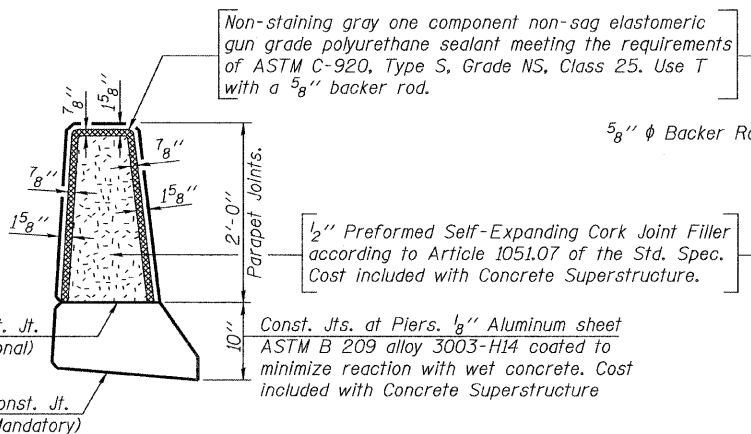


INSIDE ELEVATION OF PARAPET

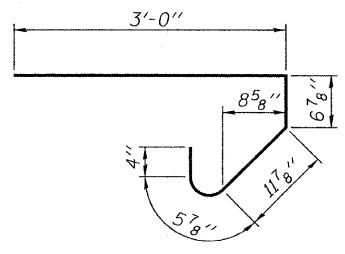


SECTION THRU PARAPET

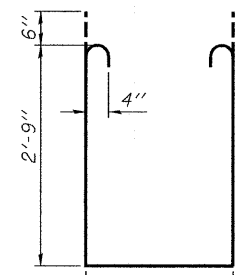


PARAPET JOINT DETAILS

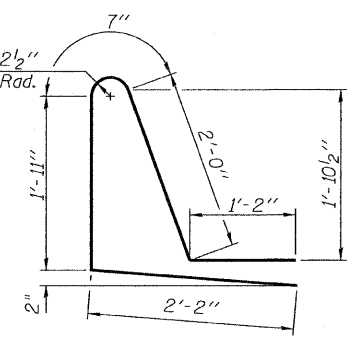
Notes:
 Floor drains need not be painted.
 Fiberglass pipe shall conform to ASTM D 2996, with short-time rupture strength hoop tensile stress of 30,000 p.s.i. minimum.



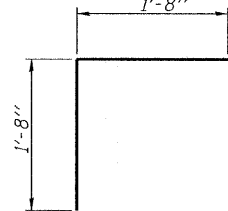
BAR s(E)



BAR s1(E)

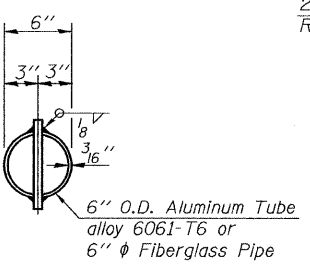


BAR d1(E)

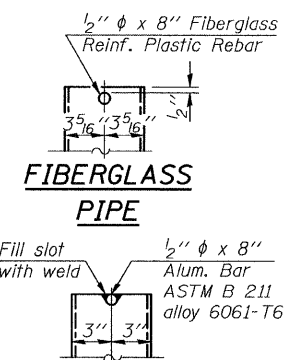


BAR v(E)

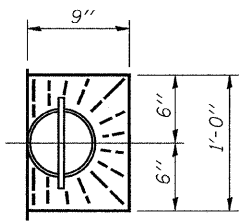
BAR d(E)



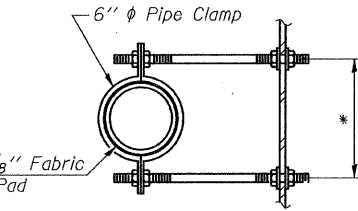
ALUMINUM TUBE TOP PLAN (Showing Aluminum Tube)



FIBERGLASS PIPE



TOP PLAN



SECTION B-B
 *Dimension as required by Pipe Clamp

SUPERSTRUCTURE BILL OF MATERIAL

Bar	No.	Size	Length	Shape
a(E)	270	#5	42'-6"	—
a1(E)	176	#5	41'-0"	—
a2(E)	540	#6	6'-0"	—
b(E)	230	#5	30'-6"	—
b1(E)	84	#6	32'-8"	—
b2(E)	222	#5	25'-8"	—
d(E)	320	#5	5'-7"	—
d1(E)	320	#5	7'-10"	—
e(E)	56	#4	17'-8"	—
e1(E)	64	#4	7'-0"	—
e2(E)	42	#4	14'-6"	—
e3(E)	8	#4	18'-6"	—
e4(E)	4	#4	22'-9"	—
e5(E)	4	#8	35'-8"	—
e6(E)	8	#8	7'-0"	—
e7(E)	4	#8	23'-10"	—
m(E)	8	#6	22'-0"	—
m1(E)	12	#6	22'-10"	—
m2(E)	28	#6	9'-0"	—
m3(E)	12	#6	5'-10"	—
m4(E)	4	#6	2'-10"	—
s(E)	96	#5	5'-5"	—
s1(E)	84	#4	8'-8"	—
v(E)	82	#5	3'-4"	—
Reinforcement Bars, Epoxy Coated			Pound	51,020
Concrete Superstructure			Cu. Yds.	215.6
Bar Splicers			Each	80

Bars indicated thus 1 x 2-#5 etc. indicates 1 line of bars with 2 lengths per line.

**SUPERSTRUCTURE DETAILS
 IL ROUTE 4/15 OVER
 KASKASKIA OVERFLOW
 F.A.P. RT. 817 SEC. 421B-1
 ST. CLAIR COUNTY
 STATION 149+50.00
 STRUCTURE NO. 082-0275**

COOMBE-BLOXDORF P.C. Engineers / Land Surveyors Springfield, Illinois Design Firm License No. 184-002703	PROJECT NO. 06001-13	SHEET NO. 11 28 SHEETS	F.A.P. RTE. 817	SECTION 421B-1	COUNTY ST. CLAIR	TOTAL SHEETS 56	SHEET NO. 30
	DATE 11/20/08 DRAWN BY TFC CHECKED BY RM/CME/MCB		CONTRACT NO.				FED. ROAD DIST. NO. 7 ILLINOIS FED. AID PROJECT

PLOT DATE = 11/20/2008
 FILE NAME = ...bridge-plansuper-detail.dgn
 PLOT SCALE = 0.10000 1" = 10'
 USER NAME = JML

S-I-D 5-16-08