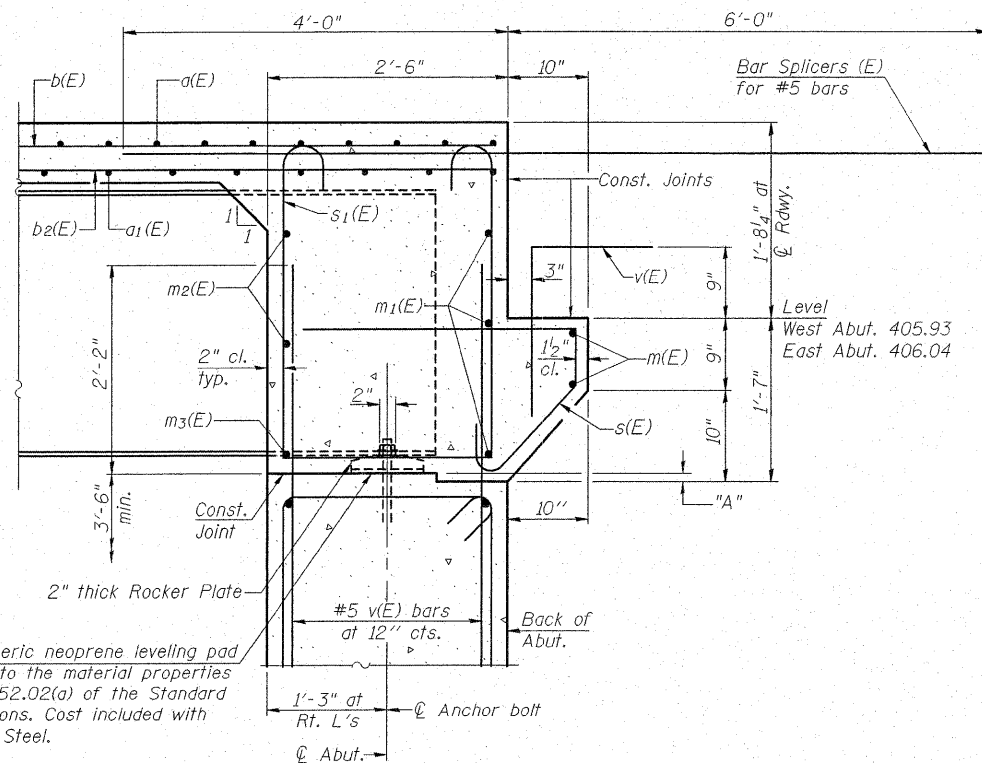
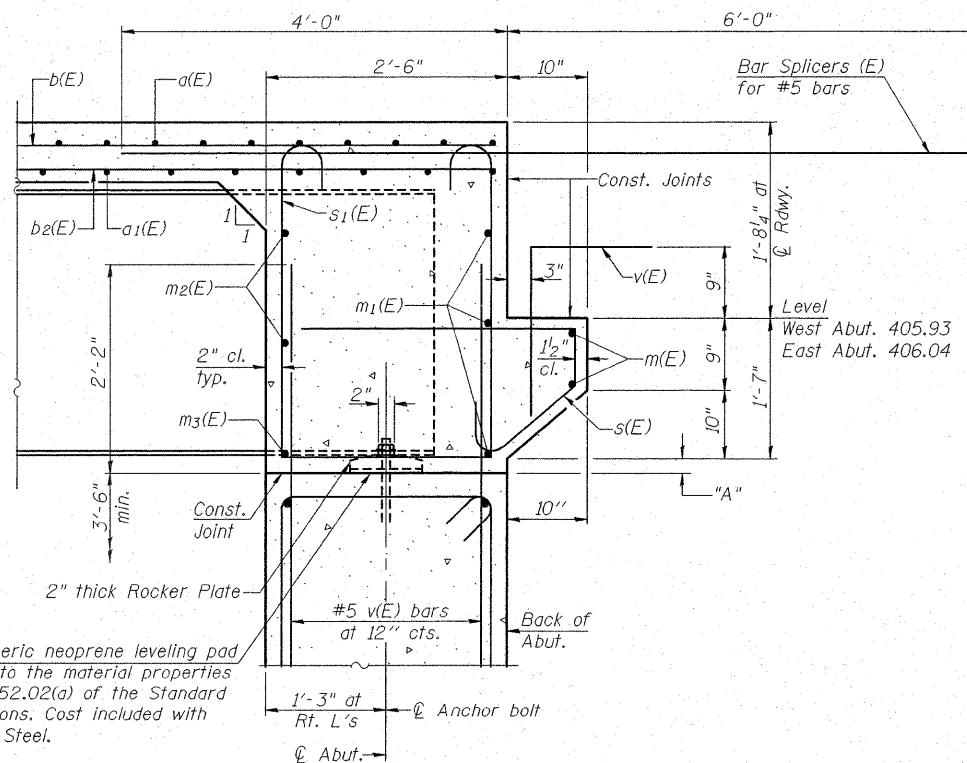


DIAPHRAGM ELEVATION AT ABUTMENT



SECTION A-A
At Seats for Beams 3, 4, & 5



SECTION B-B
At Seats for Beams 1, 2, 6 & 7

DIMENSION "A"

Beam	1	2	3	4	5	6	7
W. Abut.	2 1/2"	1"	1 1/4"	1 3/8"	1 1/4"	1"	2 1/2"
E. Abut.	2 1/2"	1"	1 1/4"	1 3/8"	1 1/4"	1"	2 1/2"

See Section A-A and Section B-B for Dimension "A" locations

NOTES
Reinforcement bars in diaphragm are billed with superstructure on sheet 11 of 28.
Concrete in diaphragm is included with Concrete Superstructure on sheet 11 of 28.
For details of bars s(E) & s1(E) see sheet 11 of 28.

MIN. BAR LAP
#6 bar = 2'-9"

DIAPHRAGM DETAILS
IL ROUTE 4/15 OVER
KASKASKIA OVERFLOW
F.A.P. RT. 817 SEC. 421B-1
ST. CLAIR COUNTY
STATION 149+50.00
STRUCTURE NO. 082-0275