

PLAN

All beams are W27 x 114 (N.T.R.) M270 Grade 50W

TOP OF BEAM ELEVATIONS

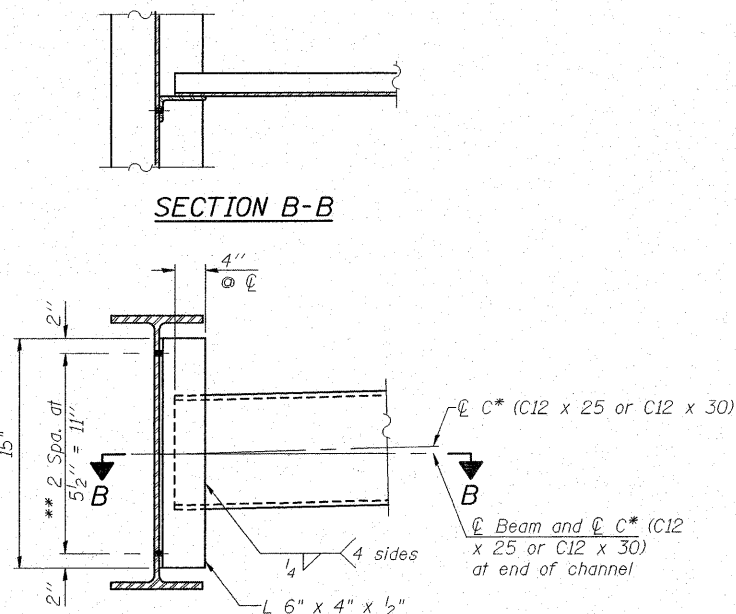
Location	Beam 1	Beam 2	Beam 3	Beam 4	Beam 5	Beam 6	Beam 7
℄ Brg. W. Abut.	406.59	406.72	406.82	406.91	406.82	406.72	406.59
℄ Brg. Pier 1	406.66	406.78	406.88	406.98	406.88	406.78	406.66
℄ Splice 1	406.67	406.80	406.90	406.99	406.90	406.80	406.67
℄ Splice 2	406.70	406.83	406.93	407.02	406.93	406.83	406.70
℄ Brg. Pier 2	406.70	406.83	406.93	407.03	406.93	406.83	406.70
℄ Brg. E. Abut.	406.71	406.83	406.93	407.03	406.93	406.83	406.71

(For Fabrication only)

NOTES

Load carrying components designated "NTR" shall conform to the Supplemental Requirements for Notch Toughness, Zone 2.
All cross frames or diaphragms shall be installed as steel is erected and secured with erection pins and bolts. Individual cross frames or diaphragms at supports may be temporarily disconnected to install bearing anchor rods.

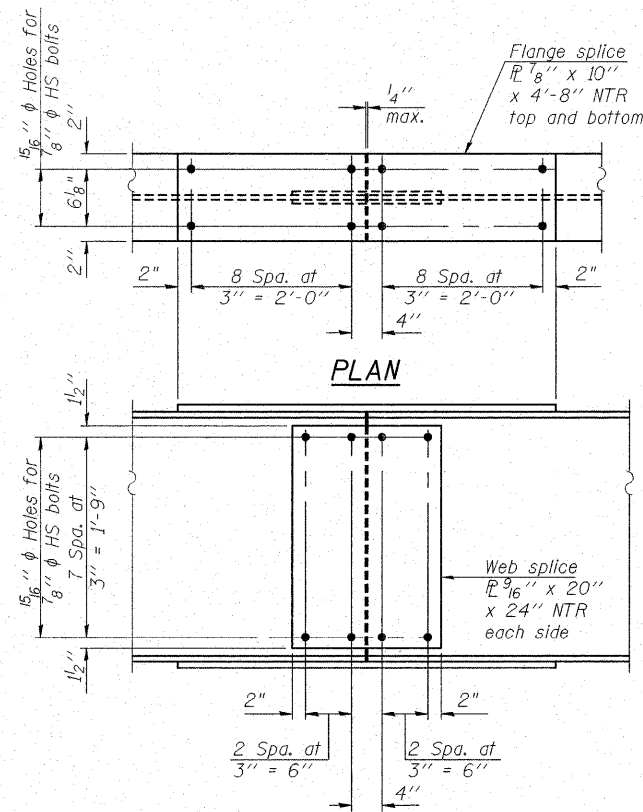
STRUCTURAL STEEL DETAILS
IL ROUTE 4/15 OVER
KASKASKIA OVERFLOW
F.A.P. RT. 817 SEC. 421B-1
ST. CLAIR COUNTY
STATION 149+50.00
STRUCTURE NO. 082-0275



INTERIOR DIAPHRAGM

Note: 36 Required.
Two hardened washers required for each set of oversized holes.

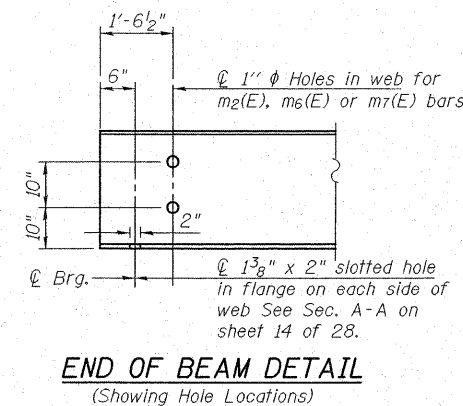
* Alternate channels are permitted to facilitate material acquisition. Calculated weight of structural steel is based on the lighter section.
** 3/4" φ HS bolts, 15/16" φ holes



ELEVATION

TYPICAL SPLICE DETAIL

(14 Required)



END OF BEAM DETAIL

(Showing Hole Locations)

COOMBE-BLOXDORF P.C. Engineers / Land Surveyors Springfield, Illinois Design Firm License No. 184-002703	PROJECT NO. 06001-13 SCALE DATE 9/17/08 DRAWN BY TFG CHECKED BY RM/CME/MCB	SHEET NO. 13 28 SHEETS	F.A.P. RTE. 817	SECTION 421B-1	COUNTY ST. CLAIR	TOTAL SHEETS 56	SHEET NO. 32
	CONTRACT NO. FED. ROAD DIST. NO. 7 ILLINOIS FED. AID PROJECT						