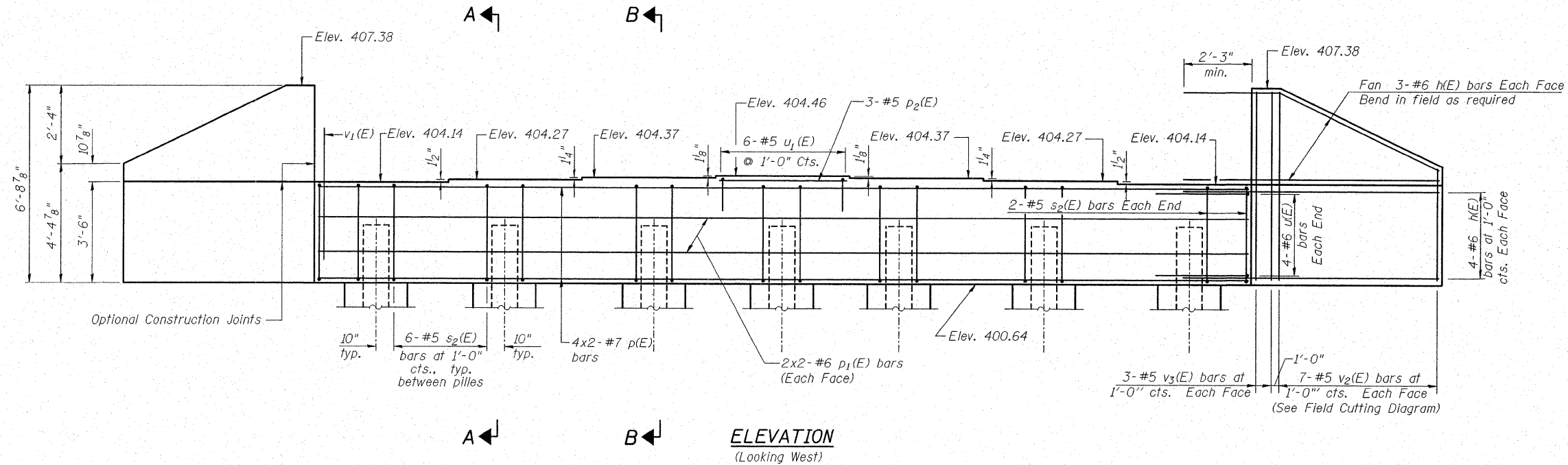
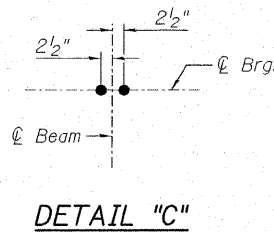


Notes: Four steps monolithically with cap.

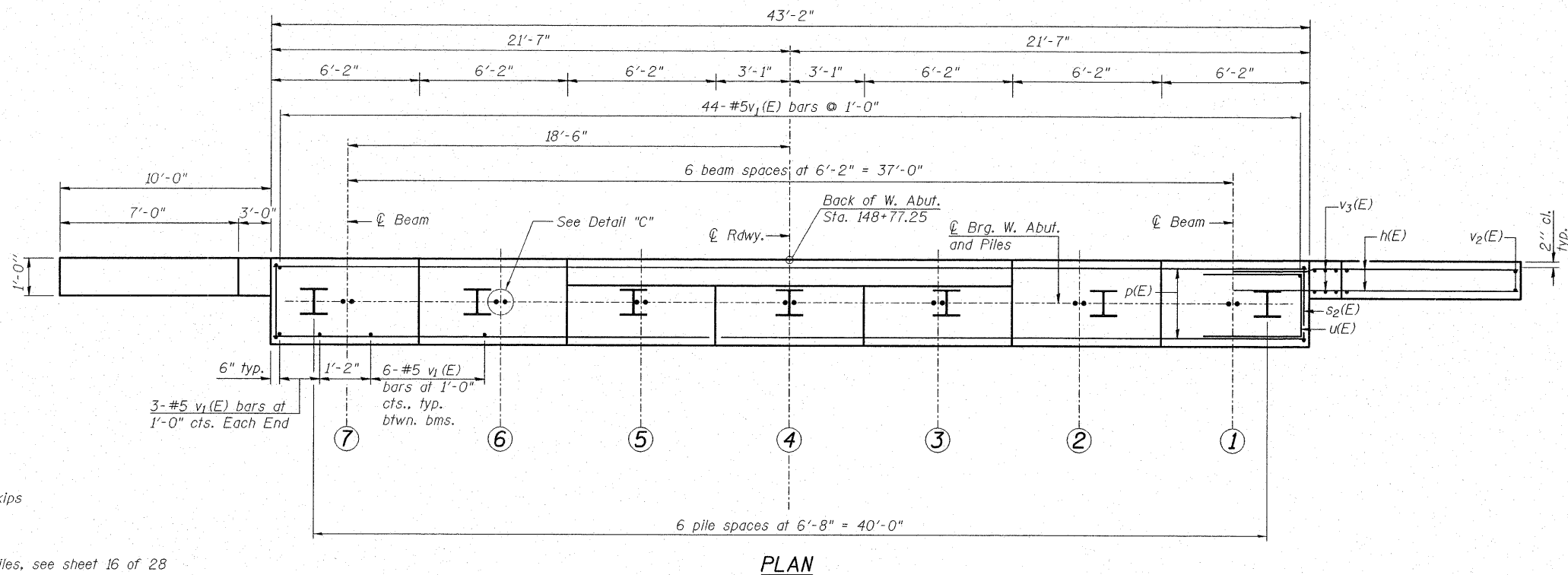
STATE OF ILLINOIS
DEPARTMENT OF TRANSPORTATION



ELEVATION
(Looking West)



DETAIL "C"



PLAN

MIN. BAR LAP

#6 bars = 2'-7"
#7 bars = 3'-5"

Notes:

See Sheet No. 16 of 28 for Section A-A and B-B.

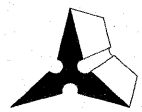
See Sheet No. 16 of 28 for West Abutment Bill of Material.

Bars indicated thus 40 x 5-#5 etc. indicates 40 lines of bars with 5 lengths per line.

PILE DATA

Type: HP 12x53
Nominal Required Bearing: 300 kips
Factored Resistance Available: 150 kips
Est. Length: 76 ft.
No. Production Piles: 6
No. Test Piles: 1
HP Pile Anchorage required for all piles, see sheet 16 of 28

| | |
|----------|-----|
| DESIGNED | DB |
| CHECKED | RS |
| DRAWN | ER |
| CHECKED | WWH |



Juneau Associates, Inc. P.C.
CONSULTING ENGINEERS AND LAND SURVEYORS
2100 State Street
Granite City, Illinois 62040
Phone: (618) 677-1400
Fax: (618) 452-5541
100 North Research Drive
Edwardsville, Illinois 62025
Phone: (618) 659-0900/(618) 659-0800
Fax: (618) 659-0941
Registered Professional Service Corporation License No. 184-003389

WEST ABUTMENT
ILLINOIS ROUTE 4/15 OVER
KASKASKIA OVERFLOW
F.A.P. ROUTE 817 SEC 421B-1
ST. CLAIR COUNTY
STATION 149+50.00
STRUCTURE NO. 082-0275

| | | | | | |
|-------------------------------|------------------------|---------------------------|---------------------|--------------------|-----------------|
| SHEET NO. 15 28 SHEETS | F.A.P. RTE. 817 | SECTION 421B-1 | COUNTY ST. CLAIR | TOTAL SHEETS 56 | SHEET NO. 34 |
| | STRUCTURE NO. 082-0275 | | CONTRACT NO. 76885 | | |
| FED. ROAD DIST. NO. | | ILLINOIS FED. AID PROJECT | | | |