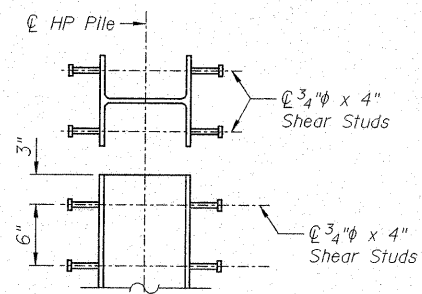
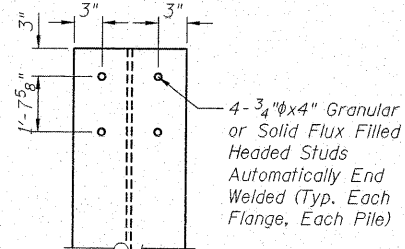


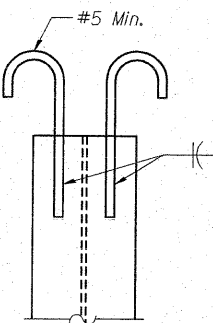
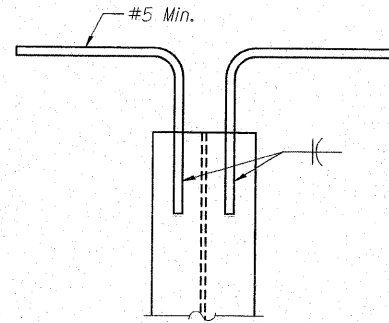
STATE OF ILLINOIS
DEPARTMENT OF TRANSPORTATION



OPTION A



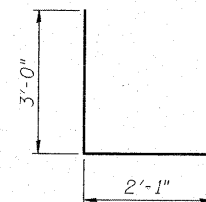
OPTION B



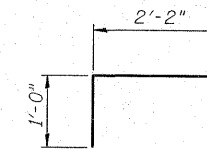
OPTION C

HP PILE ANCHORAGE

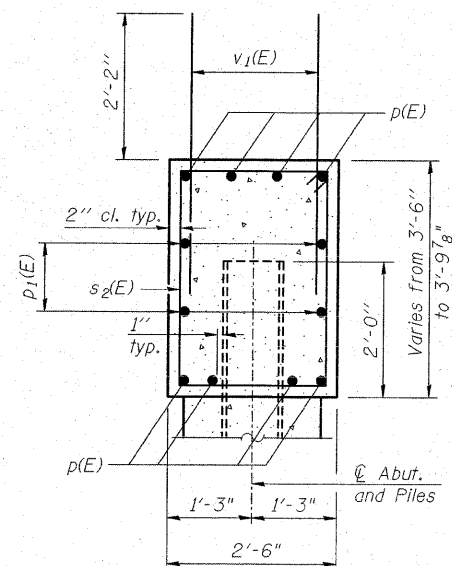
Cost of furnishing and installing HP Pile Anchorage for Option A, B or C is included in the cost unit price for Furnishing Steel Piles HP 12x53.



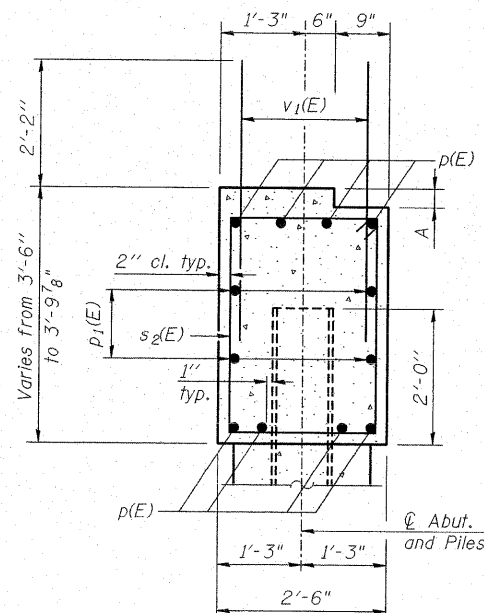
BAR u(E)



BAR u₁(E)



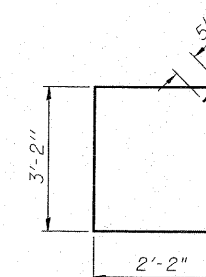
SECTION A-A
At Beam Seat 1, 2, 6, 7



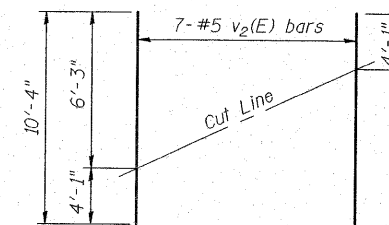
SECTION B-B
At Beam Seat 3, 4, 5

DIMENSION "A"

Beam	1	2	3	4	5	6	7
"A"	-	-	1/4"	1 3/8"	1/4"	-	-



BAR s₂(E)



FIELD CUTTING DIAGRAM

Order v₂(E) full length. Cut as shown and use remainder of bars in opposite face.

**WEST ABUTMENT
BILL OF MATERIAL**

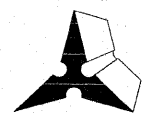
Bar	No.	Size	Length	Shape
h(E)	28	#6	12'-6"	—
p(E)	16	#7	23'-2"	—
p ₁ (E)	8	#6	22'-9"	—
p ₂ (E)	3	#5	5'-10"	—
s ₂ (E)	40	#5	11'-7"	□
u(E)	8	#6	8'-1"	—
u ₁ (E)	6	#5	4'-2"	—
v ₁ (E)	86	#5	4'-4"	—
v ₂ (E)	14	#5	10'-4"	—
v ₃ (E)	12	#5	6'-5"	—
Structure Excavation		Cu. Yd.	105	
Concrete Structures		Cu. Yd.	19.0	
Reinforcement Bars, Epoxy Coated		Pound	2800	
Furnishing Steel Piles HP12x53		Foot	456	
Driving Piles		Foot	456	
Test Piles HP12x53		Each	1	
Concrete Encasement		Cu. Yd.	2.5	

For HP Pile details see sheet 23 of 28.

Space reinforcement in cap to miss anchor bolts.

**WEST ABUTMENT DETAILS
ILLINOIS ROUTE 4/15 OVER
KASKASKIA OVERFLOW
F.A.P. ROUTE 817 SEC 421B-1
ST. CLAIR COUNTY
STATION 149+50.00
STRUCTURE NO. 082-0275**

DESIGNED	DB
CHECKED	RS
DRAWN	ER
CHECKED	WWH



Juneau Associates, Inc. P.C.
CONSULTING ENGINEERS AND LAND SURVEYORS
2100 State Street
Granite City, Illinois 62040
Phone: (618) 977-1400
Fax: (618) 452-5541
100 North Research Drive
Edwardsville, Illinois 62025
Phone: (618) 659-0300/(618) 659-0800
Fax: (618) 659-0941
Registered Professional Service Corporation, License No. 184-003380

SHEET NO. 16	F.A.P. RTE.	SECTION	COUNTY	TOTAL SHEETS	SHEET NO.
28 SHEETS	817	421B-1	ST. CLAIR	56	35
STRUCTURE NO. 082-0275			CONTRACT NO. 76885		
FED. ROAD DIST. NO.		ILLINOIS	FED. AID PROJECT		