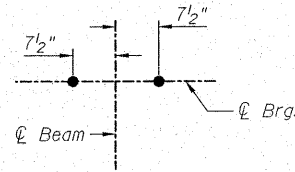
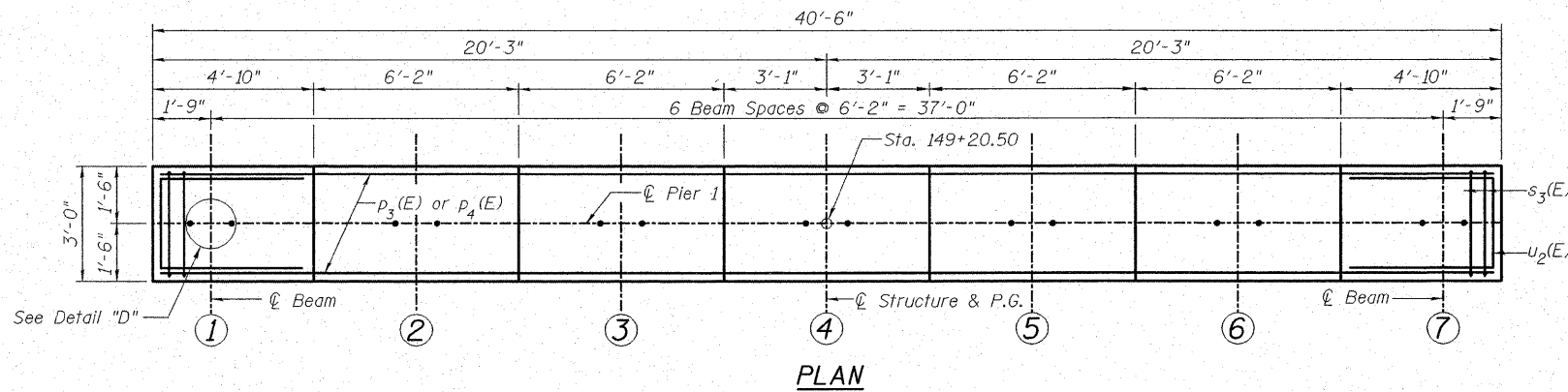
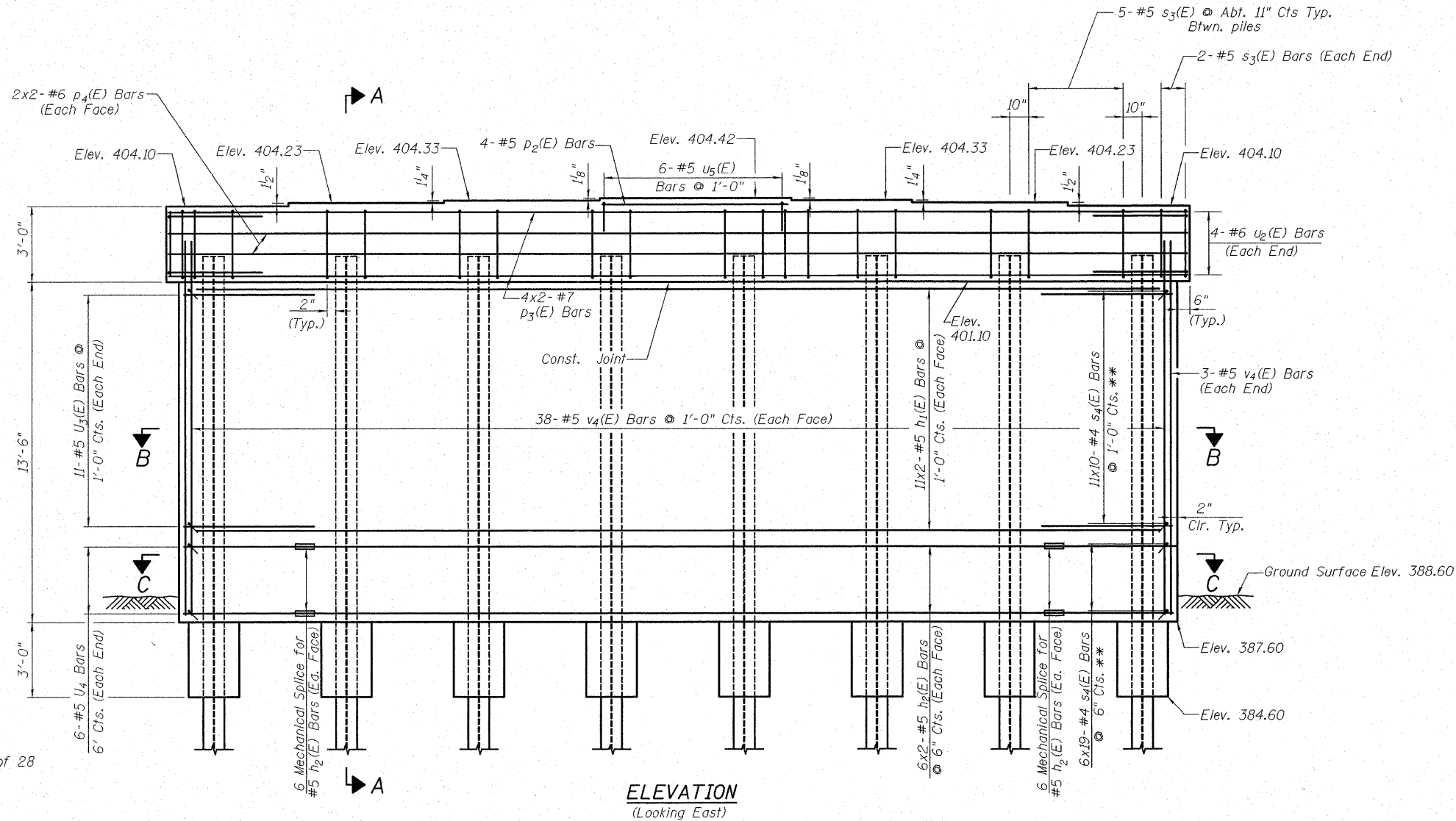


STATE OF ILLINOIS
DEPARTMENT OF TRANSPORTATION



DETAIL "D"



MIN. BAR CAP

- #5 bars = 2'-2"
- #6 bars = 2'-7"
- #7 bars = 3'-5"

Notes:

See Sheet No. 20 of 28 for Section A-A, B-B and C-C.

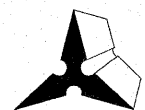
See Sheet No. 20 of 28 for Pier 1 Bill of Material.

Bars indicated thus 40 x 5-#5 etc. indicates 40 lines of bars with 5 lengths per line.

PILE DATA

Type: HP 12x53
Nominal Required Bearing: 374 kips
Factored Resistance Available: 180 kips
Est. Length: 85 ft.
No. Production Piles: 7
No. Test Piles: 1
HP Pile Anchorage required for all piles, see sheet 20 of 28

DESIGNED	DB
CHECKED	RS
DRAWN	ER
CHECKED	WWH



Juneau Associates, Inc. P.C.
CONSULTING ENGINEERS AND LAND SURVEYORS

2100 State Street
Granite City, Illinois 62040
Phone: (618) 877-1400
Fax: (618) 452-5541

100 North Research Drive
Edwardsville, Illinois 62025
Phone: (618) 659-0900 (618) 659-0900
Fax: (618) 659-0911

Registered Professional Service Corporation License No. 184-003389

** Notes:

The 90° hooks of two successive crossties, s4(E), engaging the same vertical bar shall be alternated end for end.

Bars indicated thus 20x3-#5 etc. indicates 20 lines of bars with 3 bars per line.

PIER 1
ILLINOIS ROUTE 4/15 OVER
KASKASKIA OVERFLOW
F.A.P. ROUTE 817 SEC 421B-1
ST. CLAIR COUNTY
STATION 149+50.00
STRUCTURE NO. 082-0275

SHEET NO. 19 28 SHEETS	F.A.P. RTE.	SECTION	COUNTY	TOTAL SHEETS	SHEET NO.
	817	421B-1	ST. CLAIR	56	38
STRUCTURE NO. 082-0275			CONTRACT NO. 76885		
FED. ROAD DIST. NO.		ILLINOIS FED. AID PROJECT			