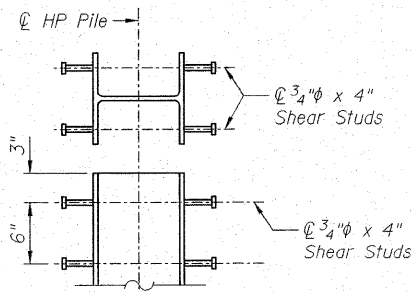
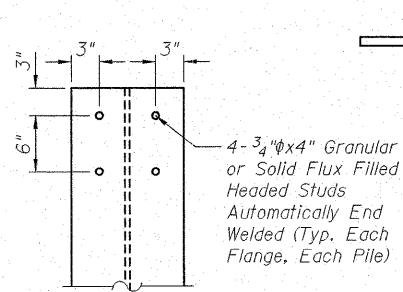


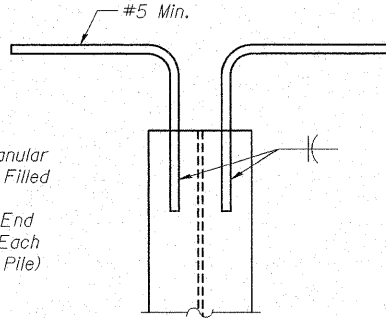
STATE OF ILLINOIS  
DEPARTMENT OF TRANSPORTATION



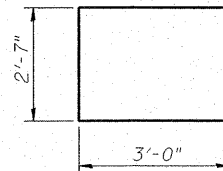
OPTION A



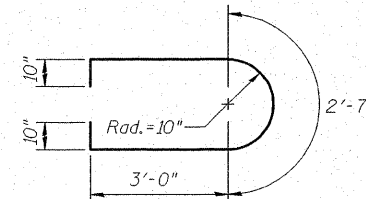
OPTION B



OPTION C



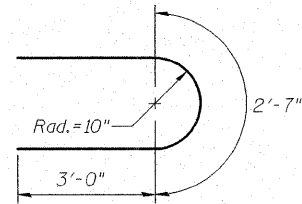
BAR u2(E)



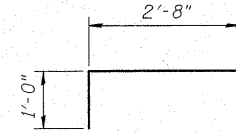
BAR u3(E)

HP PILE ANCHORAGE

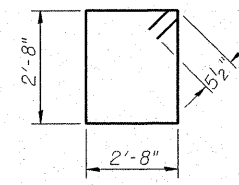
Cost of furnishing and installing HP Pile Anchorage For Option A, B or C is included in the cost unit price for Furnishing Steel Piles HP 12x53.



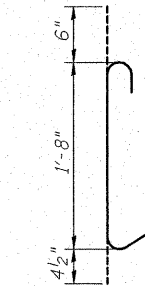
BAR u4(E)



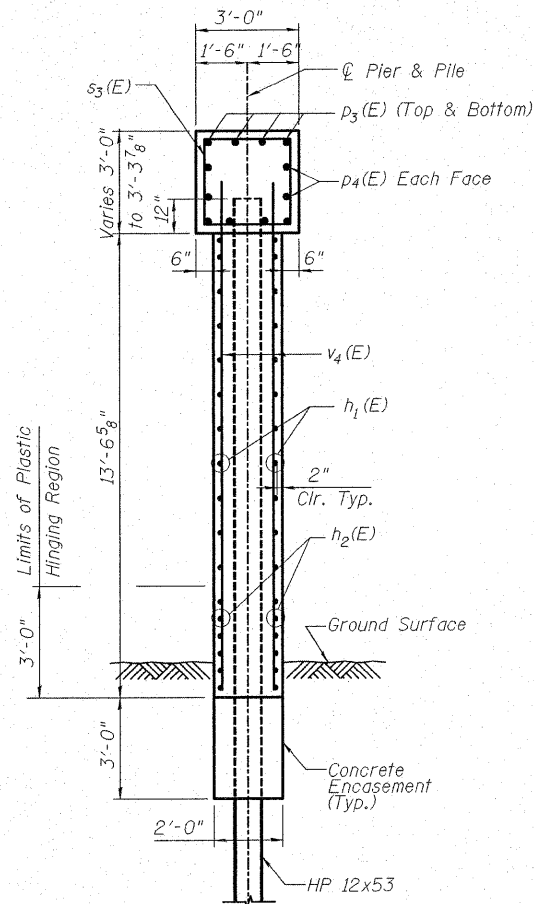
BAR u5(E)



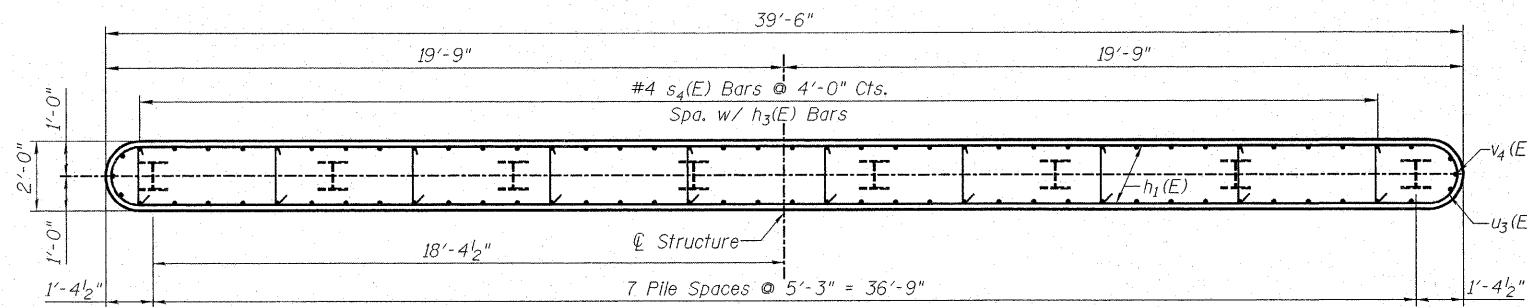
BAR s3(E)



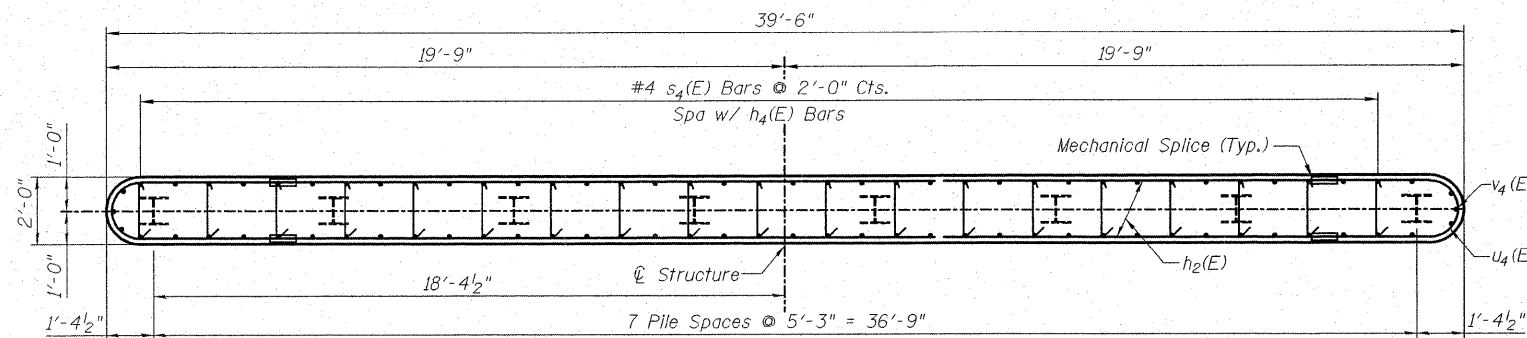
BAR s4(E)



SECTION A-A



SECTION C-C



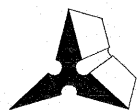
PIER 2  
BILL OF MATERIAL

| Bar                              | No.     | Size | Length  | Shape |
|----------------------------------|---------|------|---------|-------|
| h <sub>1</sub> (E)               | 44      | #5   | 19'-10" | —     |
| h <sub>2</sub> (E)               | 24      | #5   | 17'-0"  | —     |
| p <sub>2</sub> (E)               | 4       | #5   | 5'-10"  | —     |
| p <sub>3</sub> (E)               | 16      | #7   | 21'-10" | —     |
| p <sub>4</sub> (E)               | 8       | #6   | 21'-5"  | —     |
| s <sub>3</sub> (E)               | 39      | #5   | 11'-7"  | □     |
| s <sub>4</sub> (E)               | 224     | #4   | 2'-7"   | U     |
| u <sub>2</sub> (E)               | 8       | #6   | 8'-7"   | U     |
| u <sub>3</sub> (E)               | 22      | #5   | 10'-3"  | U     |
| u <sub>4</sub> (E)               | 12      | #5   | 8'-7"   | U     |
| u <sub>5</sub> (E)               | 8       | #5   | 4'-8"   | U     |
| v <sub>4</sub> (E)               | 82      | #5   | 14'-6"  | —     |
| Structure Excavation             | Cu. Yd. |      | 13      |       |
| Concrete Structures              | Cu. Yd. |      | 53.3    |       |
| Reinforcement Bars, Epoxy Coated | Pound   |      | 4910    |       |
| Furnishing Steel Piles HP12x53   | Foot    |      | 560     |       |
| Driving Piles                    | Foot    |      | 560     |       |
| Test Piles HP12x53               | Each    |      | 1       |       |
| Mechanical Splice                | Each    |      | 24      |       |
| Concrete Encasement              | Cu. Yd. |      | 2.8     |       |

Notes:  
Space reinforcement in cap to miss anchor bolts.  
Four steps monolithically with cap.  
For HP Pile details see sheet 23 of 28.

PIER 2 DETAILS  
ILLINOIS ROUTE 4/15 OVER  
KASKASKIA OVERFLOW  
F.A.P. ROUTE 817 SEC 421B-1  
ST. CLAIR COUNTY  
STATION 149+50.00  
STRUCTURE NO. 082-0275

|          |     |
|----------|-----|
| DESIGNED | DB  |
| CHECKED  | RS  |
| DRAWN    | ER  |
| CHECKED  | WWH |



**Juneau Associates, Inc. P.C.**  
CONSULTING ENGINEERS AND LAND SURVEYORS

2100 State Street  
Granite City, Illinois 62940  
Phone: (618) 977-1400  
Fax: (618) 452-5541

180 North Research Drive  
Edwardsville, Illinois 62025  
Phone: (618) 659-0200/(618) 659-0800  
Fax: (618) 659-0841

Registered Professional Service Corporation License No. 184-003389

|                           |             |                           |           |              |           |
|---------------------------|-------------|---------------------------|-----------|--------------|-----------|
| SHEET NO. 22<br>28 SHEETS | F.A.P. RTE. | SECTION                   | COUNTY    | TOTAL SHEETS | SHEET NO. |
|                           | 817         | 421B-1                    | ST. CLAIR | 56           | 41        |
| STRUCTURE NO. 082-0275    |             | CONTRACT NO. 76885        |           |              |           |
| FED. ROAD DIST. NO.       |             | ILLINOIS FED. AID PROJECT |           |              |           |