

STATE OF ILLINOIS
DEPARTMENT OF PUBLIC WORKS & BUILDINGS
DIVISION OF HIGHWAYS

DESIGN	REVISION	COUNTY	TOTAL SHEETS	SHEET NO.
PA-108	ADD	ST. CLAIR	41	32
SHEETS 5 SHEETS				

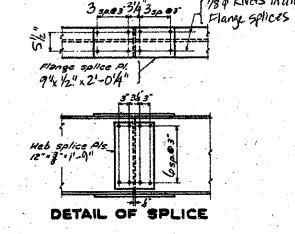
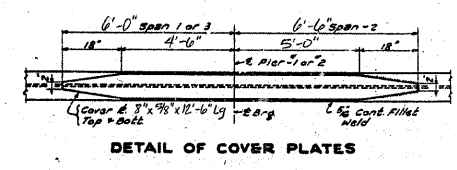
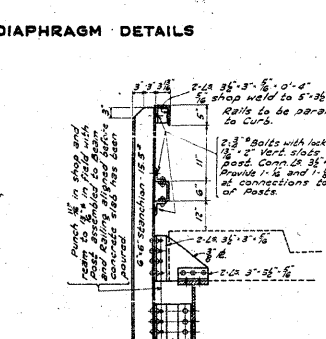
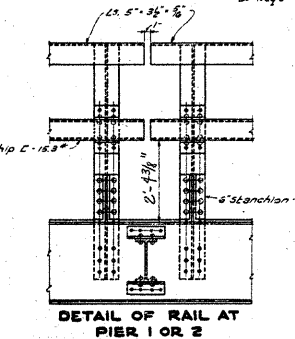
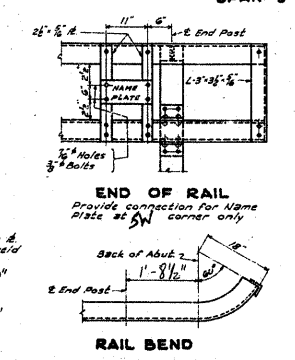
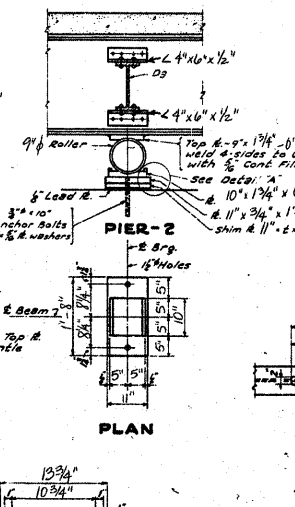
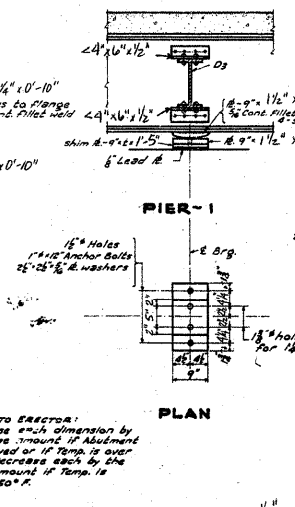
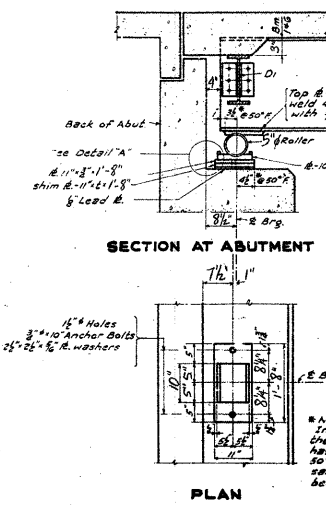
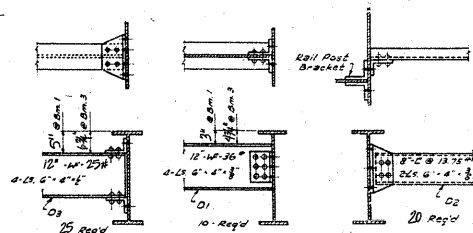
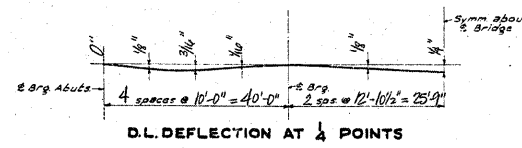
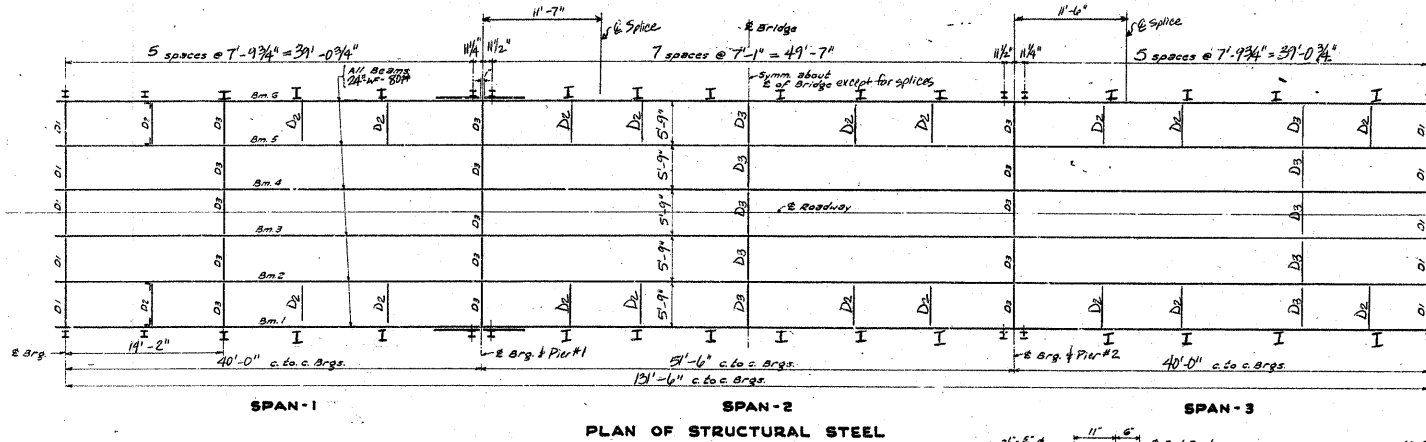
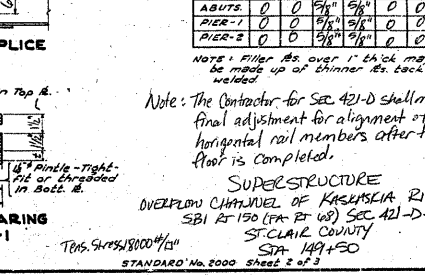
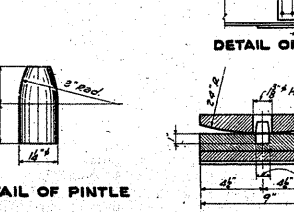
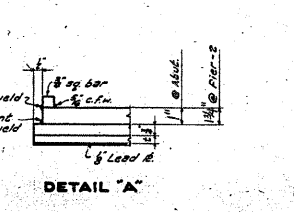
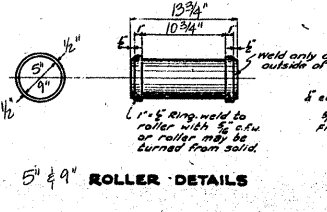


TABLE OF DIMENSIONS

BEAM NO.	1	2	3	4	5
ABUTTS	0	0	0	0	0
PIER-1	0	0	0	0	0
PIER-2	0	0	0	0	0

Note: The Contractor for Sec. 421-D shall make final adjustment for alignment of horizontal rail members after the floor is completed.



STANDARD	COMPUTED EDWARD J. DUBROW	EXAMINED	8-18-44
CHECKED		PASSED	
SPECIAL	ASSEMBLED	APPROVED	

FOR INFORMATION ONLY