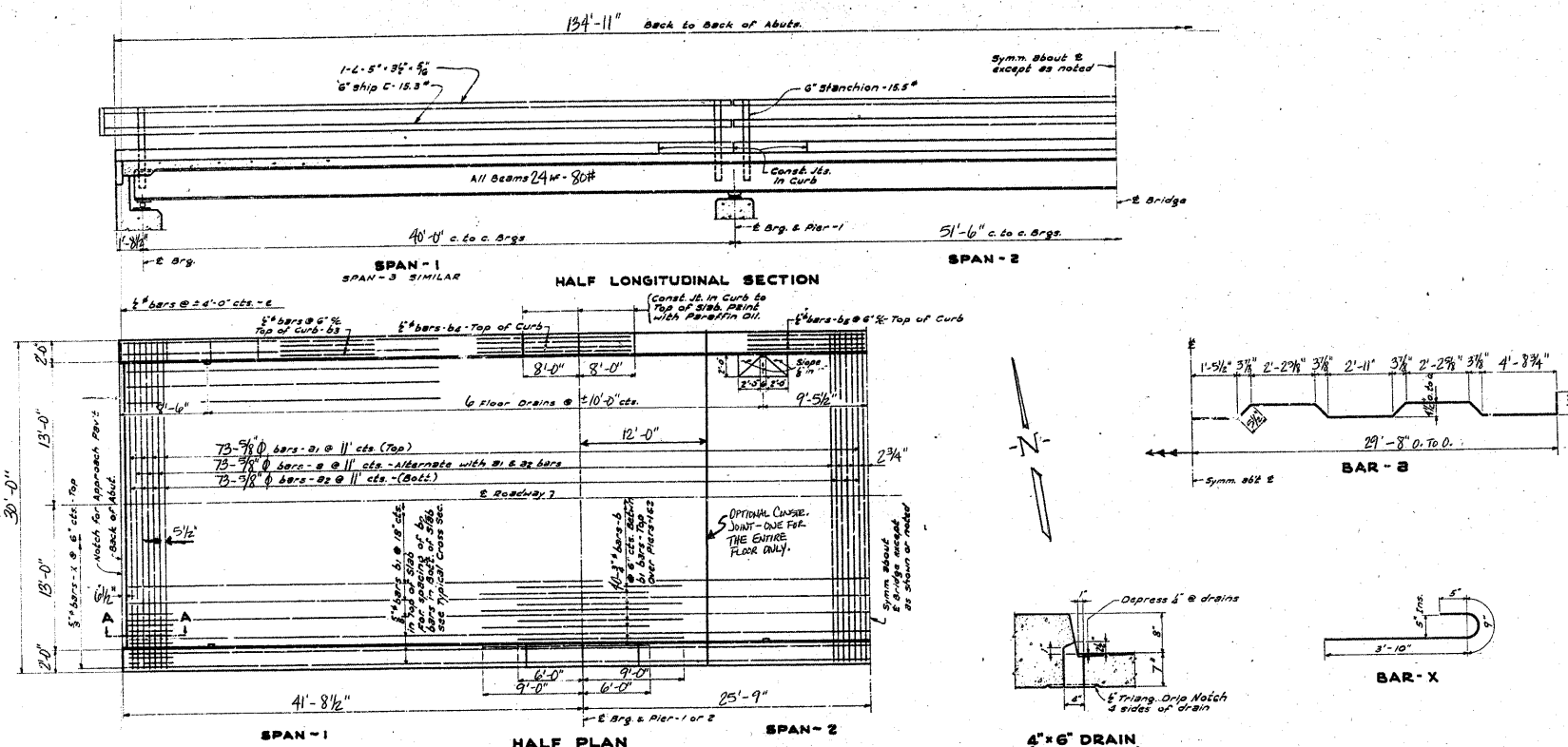


STATE OF ILLINOIS
DEPARTMENT OF PUBLIC WORKS & BUILDINGS
DIVISION OF HIGHWAYS

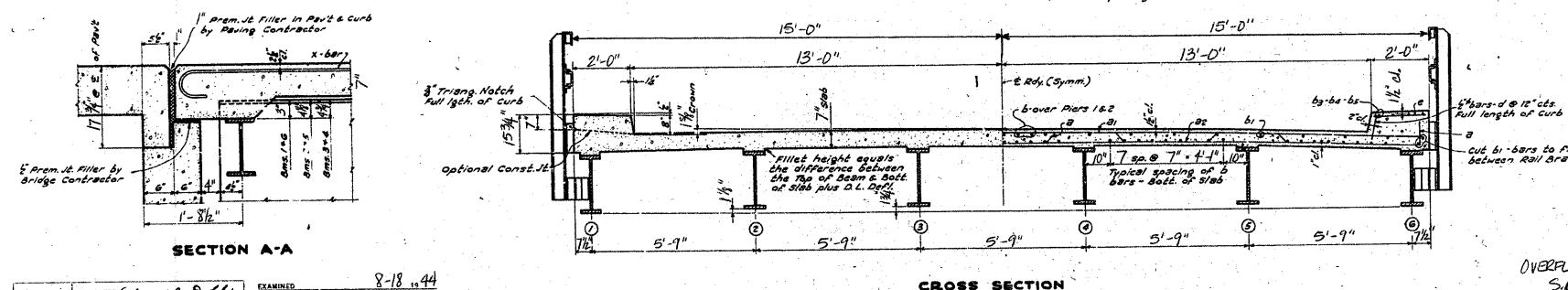
PROJECT NO.	SECTION	COUNTY	SHEET NO.	TOTAL SHEETS
FA 68	421B	ST. CLAIR	41	50



BILL OF MATERIAL

BAR	No.	SIZE	LENGTH
1	146	5/8"	201'-9"
2	146	3/8"	241'-9"
3	146	5/8"	241'-6"
4	90	3/4"	15'-0"
5	124	5/8"	231'-9"
6	210	1/2"	28'-6"
7	30	5/8"	17'-9"
8	32	5/8"	7'-9"
9	16	5/8"	18'-6"
10	70	5/8"	11'-9"
11	270	5/8"	1'-0"
12	120	5/8"	5'-0"

Class X Concrete Cu Yds. 103.0
Reinforcement Bars Lbs. 23440



STANDARD	COMPUTED & DRAWN BY Edward J. Dalbin	EXAMINED	8-18-11
CHECKED		PASSED	
DRAWN	Edward J. Dalbin, J.S. Malicki	CHECKED BY	
CHECKED		APPROVED	
SPECIAL	ASSEMBLED		
CHECKED			

CONCRETE FLOOR DETAILS
OVERFLOW CHANNEL OF KASKASKIA RIVER
S.B.I. RT. 150 (F.A. RT. 68) SEC. 421-D.E.F.
ST. CLAIR COUNTY
STA. 149+50

$f'_s = 20,000 \text{ #/sq. in.}$
 $f'_c = 1200 \text{ #/sq. in.}$
H-20 LOADINGS, STANDARD No. 2000 SHEET 1 OF 3

FOR INFORMATION ONLY